



Philips
Shaving unit

Senso Touch 2D

RQ11

Keep a close shave

Change heads every 12 months for best results

Every year your blades travel the height of Mt. Everest... 49 times! After such a workout, even the best materials can lose their edge. Retain your shaver's peak performance - replace heads every 12 months.

Follows the unique contours of your face

- GyroFlex 2D system adjusts easily to the curve

Sensationally smooth shave

- SensoTouch Shavers with Super Lift&Cut Action

An electric shaver which takes care of your skin

- Aquatec seal for comfortable dry & refreshing wet shaves
- Smooth, low-friction SkinGlide to minimize irritation

Simple replacement

- Easy click off, click on

PHILIPS
sense and simplicity

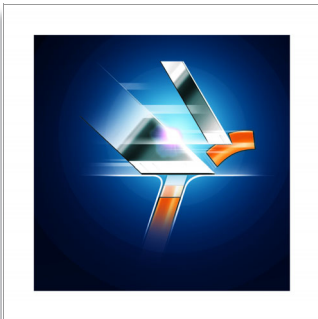
Highlights

GyroFlex 2D



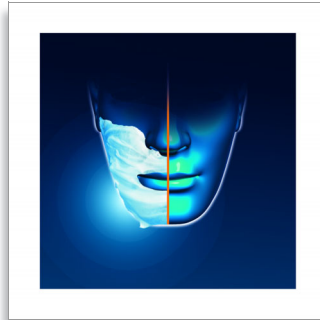
GyroFlex 2D contour-following system of the shaver adjusts easily to the curves of your face, minimizing pressure and irritation for a close shave.

Super Lift & Cut Action



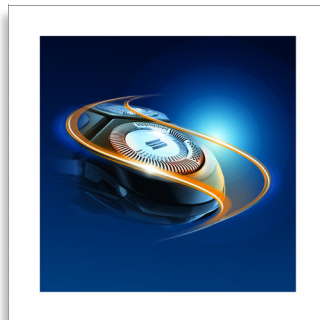
The dual blade system built into the Philips electric shaver lifts hairs to cut comfortably below skin level for a closer shave.

Aquatec



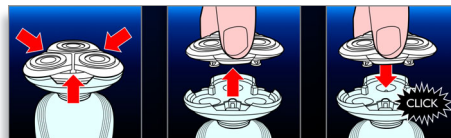
The Aquatec wet & dry seal of the electric shaver lets you choose how you prefer to shave. You can get a comfortable dry shave or a refreshing wet shave using a shaving gel or foam for extra skin comfort.

SkinGlide



The low-friction SkinGlide shaving surface of the electric shaver slides smoothly along your skin for a close easy shave.

Easy click off, click on



Simply pop the head of your Philips shaver open and use the included cleaning brush to sweep away the loose hairs.

Specifications

Shaving heads

- Fits product types: RQ1150, RQ1160
- Shaving units per packaging: 1

