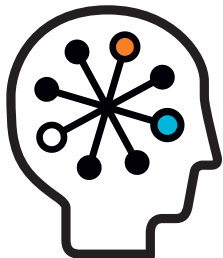


# HP Software and Aperture VISTA

Data center infrastructure management



HP and Aperture offer complete visibility into your IT infrastructure—from applications to space, power and cooling—to better align IT functions by mapping dependencies between the logical and physical resources.

## Integration highlights

- Complete topology integration models the data center's environment down to level zero
- Visual interface provides end-to-end view of the data center
- Mapping of physical and logical relationships facilitates cross-domain analysis
- Fully functional implementation eliminates customization
- Federation Management provides a single repository for use by ITIL applications

Accurate and complete information is crucial to successfully implementing data center best practices and managing risk. Insight into the physical, as well as logical, relationships is needed to maintain industry-standard, best-practice processes identified by key industry standards, such as Information Technology Infrastructure Library (ITIL).

## Benefits of the Aperture solution and HP Universal CMDB integration

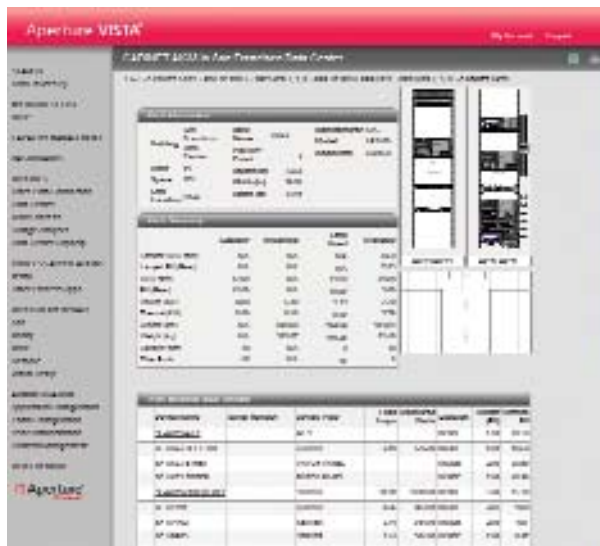
The HP Universal Configuration Management Database (CMDB) integration with Aperture VISTA eliminates the troubleshooting and planning silos that result from an incomplete picture of the relationships between applications and physical resources. This integration provides a complete topology of the data center's logical and physical infrastructure down to level zero. Data center management can immediately start reaping the benefits of an end-to-end view of the data center to "connect the dots" between logical assets and the physical infrastructure, and resources that supports each one. You can eliminate the use of disparate tools and begin gathering useful, relevant information to easily and quickly identify relationships and dependencies. Once aligned, your IT resources can work together to reduce mean time-to-repair, identify potential outages and thoroughly understand the impact of planned changes.

## Solution benefits

- Identifies dependencies and relationships quickly to reduce mean time-to-repair
- Gains top-down visibility into impact of change to optimize data center operations
- Uses insight into logical and physical assets to reduce costs and enhance IT credibility
- Bridges the gap between the physical and logical for a full picture of the data center
- Achieves rapid return on investment with complete, ready-to-go installation

## How the integration works

The integration provides a single source of truth for IT processes. Plan and execute incident, problem, change, configuration and service impact management with minimal risk. Analyze and map relationships from the HP Universal CMDB console and drill into configuration data such as space, power and cooling. Avoid collisions, fix outages quickly to minimize impact, and resolve alerts by identifying all physical components for each logical item.



## Certification environment

### Scan engine

Hardware: dual processor, 2 GHz or faster; system memory of at least 2 GB; system storage of at least 100 GB; network TCP/IP at 100 MBits/sec

Operating system: Microsoft® Windows® 2000 Server Standard or Advanced; or 2003 Server Standard, Enterprise Edition or R2

Software: Microsoft .NET Framework 1.1; Microsoft SQL Server 2000, Service Pack 3 or higher, or Microsoft SQL Server 2005, Service Pack 3; Microsoft IIS version 5 or 6

### Management server

Hardware: dual processor, 2 GHz or faster; system memory of at least 2 GB; system storage of at least 100 GB; network TCP/IP at 100 MBits/sec

Operating system: Microsoft Windows 2000 Server Standard or Advanced; or 2003 Server Standard, Enterprise Edition or R2

Software: Crystal Reports 10, Service Pack 5; Microsoft .NET Framework 1.1; Microsoft IIS version 5 or 6

### Database server

Hardware: 2 GHz or faster; system memory of at least 1 GB; system storage of at least 10GB; network TCP/IP

Operating system: Microsoft .NET Framework 1.1; Microsoft SQL Server 2000, Service Pack 3 or higher, or Microsoft SQL Server 2005, Service Pack 3; Microsoft IIS version 5 or 6

Software: Microsoft .NET Framework 1.1; Microsoft SQL Server 2000, Service Pack 3 or higher, or Microsoft SQL Server 2005, Service Pack 3; Microsoft IIS version 5 or 6

### Console

Hardware: Intel® Pentium® 4 processor, 2 GHz or faster, system memory of at least 1 GB, system storage of at least 10 GB

Operating system: Microsoft Windows 2000 Professional or Microsoft Windows XP

Software: Microsoft Internet Explorer version 6 or 7; Microsoft .NET Framework version 1.1, Service Pack 1; Adobe® Acrobat Reader 5 or higher

## About Aperture

Aperture software from Emerson Network Power manages the physical infrastructure of data centers, reduces operational risk and improves efficiency through the planning and management of data center resources and real-time monitoring. Emerson Network Power, a business of Emerson, is a global leader in enabling business-critical continuity from grid-to-chip for telecommunication networks, data centers, health care and industrial facilities. The company's solutions and expertise include AC and DC power, precision cooling systems, embedded computing and power, integrated racks and enclosures, power switching and controls, infrastructure management and monitoring, and connectivity.

## For more information

For more information, visit [www.aperture.com](http://www.aperture.com) and [www.emersonnetworkpower.com](http://www.emersonnetworkpower.com).

## Technology for better business outcomes

© Copyright 2009 Hewlett-Packard Development Company, L.P. The information contained herein is subject to change without notice. The only warranties for HP products and services are set forth in the express warranty statements accompanying such products and services. Nothing herein should be construed as constituting an additional warranty. HP shall not be liable for technical or editorial errors or omissions contained herein.

Microsoft and Windows are U.S. registered trademarks of Microsoft Corporation. Intel Pentium is a trademark or registered trademark of Intel Corporation or its subsidiaries in the United States and other countries. Adobe is a trademark of Adobe Systems Incorporated.

To learn more, visit [www.hp.com](http://www.hp.com)  
<http://h20229.www2.hp.com/partner/isv/Aperture.jsp>

4AA2-6727ENW, May 2009



HP Software  
Gold Business Partner

