

HP POWER ASSISTANT



YOU HAVE
THE POWER.



USE IT WISELY.

TECHNOLOGY SPOTLIGHT
HP PROFESSIONAL INNOVATIONS FOR BUSINESS NOTEBOOKS



DO YOU HAVE THE POWER TO GET THE JOB DONE?

When it comes to mobile computing, battery life—or the lack of it—can make or break the whole experience. So why are notebook power settings so difficult to find and use? Nothing is more frustrating than having your notebook's battery die in the middle of a meeting, e-mail or document. Unfortunately, all that the battery icon in your system tray reveals is that you're running dangerously low. It's a race against time, and the clock keeps ticking while you struggle with your settings.

The big picture doesn't look any better. Right now, because there is no power reporting available on your network, IT has no way of accurately tracking power consumption for any one system, much less notebooks throughout the enterprise. This makes it next to impossible to include notebook energy use in your enterprise's cost-cutting or environmental initiatives.

Now, that's all changed. With HP Power Assistant, it's easy to control, stretch and use your power wisely.

YOU'RE IN CONTROL WITH HP POWER ASSISTANT.

HP Power Assistant puts your notebook's power settings at your fingertips with one easy-to-use tool. And because it uses dedicated hardware found in HP Business Notebooks, the HP Power Assistant delivers a level of accuracy and monitoring you simply can't find in other power management tools. You gain the real-time visibility and control you need to conserve your notebook's power, stretch its battery life and even help meet your goals for greener computing.

On the network level, HP Power Assistant delivers an integrated solution that measures, logs and reports platform energy use, giving IT the information needed to save the enterprise money and energy.



See your power at work.

Plugged in

When your notebook is plugged into an AC power source, HP Power Assistant displays your current battery status and your current power usage in watts.

The **Profile** list lets you easily determine the impact of your current and optional power settings. Say you want to reduce your impact on the environment. Selecting the Mobile setting reduces your power consumption, thereby helping to reduce your carbon footprint.

On the go

When you're unplugged and running on pure DC, the HP Power Assistant displays your battery life in hours and minutes. And the **Profile** list shows your consumption impact in minutes. Need to stretch your battery life to make it to the end of that meeting? Switching from **High Performance** to **Mobile** can help you stretch your remaining battery time.

Devices & Services	Time Impact	Power Consumption
<input checked="" type="checkbox"/> Aero	-	0.4 Watts
<input checked="" type="checkbox"/> Bluetooth	-	0.2 Watts
<input checked="" type="checkbox"/> WLAN	-	0.4 Watts

Windows Power Plan		Power Consum
<input checked="" type="radio"/> Max Battery	-	20 Watts
<input type="radio"/> HP Optimized	-	22 Watts
<input type="radio"/> Max Performance	-	25 Watts

Screen	Info	Power Consum
Brightness	100%	2.23 Watts
Other applications and devices	-	1.4 Watts

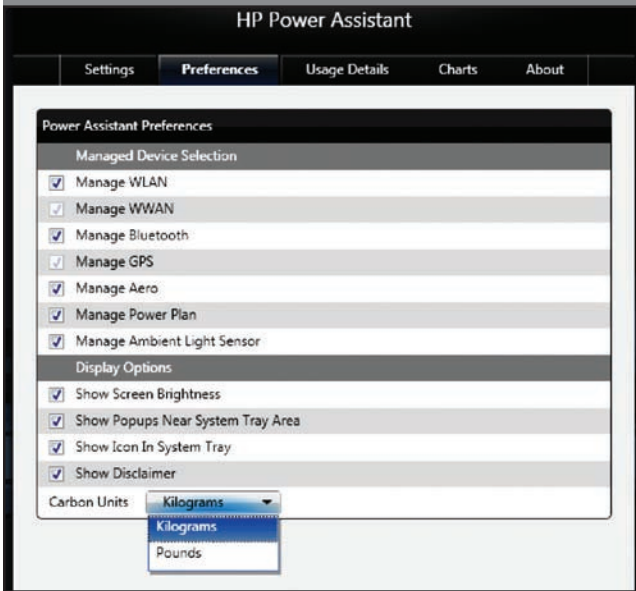
Profile	Power Consumption
Mobile	save 2.9 Watts
Power Saver (offline)	save 2.9 Watts
Presentation (offline)	lose 0.8 Watts
Office	lose 1.3 Watts
High Performance	lose 5.2 Watts

AC? DC? What's the difference?

Alternating current (AC) is the power you get from a normal wall outlet. Direct current (DC) is the type of power produced by batteries. A notebook uses both. When plugged in, the notebook's power adapter converts the AC coming from the outlet into the DC needed to operate the notebook and charge the battery. Unlike other power monitors, HP Power Assistant provides views of both, so you know exactly how much power your notebook is using and how much time you have left to finish the job.



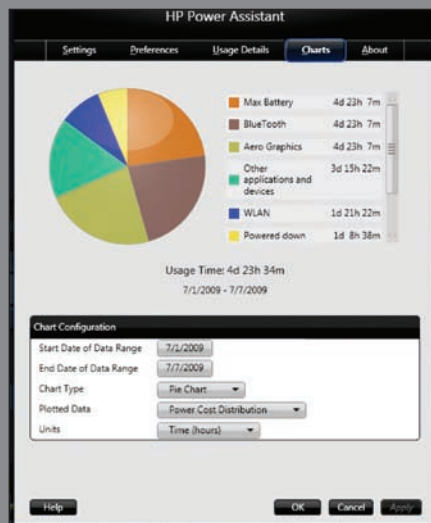
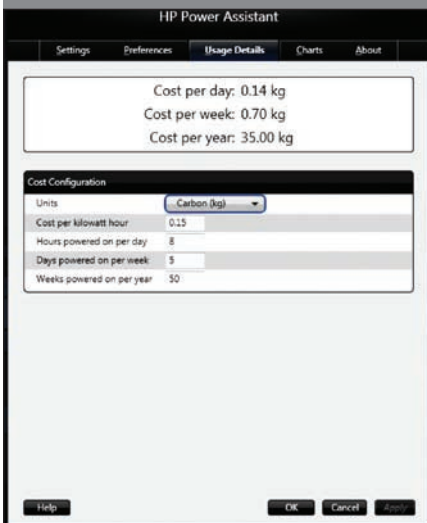
Control where your power goes.



HP Power Assistant can help you through a power pinch and lets you choose the appropriate profile for your day-to-day computing. You might want or need more control. HP Power Assistant makes this easy, too. In **Settings** you can see and control the devices, services and Windows® power plan settings associated with each profile.

Let's say you're not willing to sacrifice your Bluetooth® capabilities—ever. Simply de-select it from the Preferences tab. In addition to choosing which devices the HP Power Assistant manages, you can configure your display options. For example, you can display estimated carbon¹ units in kilograms or pounds.

Get the details you want.



If you're serious about saving money and reducing your carbon footprint,¹ you need even more information about your power consumption. HP Power Assistant's **Usage Details** feature helps you understand and estimate what running your notebook costs when using each setting—in dollars, kilowatt hours and even carbon.¹

Sometimes a good visual helps. HP Power Assistant breaks down power use into bar and pie charts and can plot this data by device, system state, distribution, day, week or month.

WHAT SETS THE HP POWER ASSISTANT APART FROM THE REST?

- It uses dedicated hardware in HP notebooks for real-time measurement of power use. Information is reported for both AC and DC power.
- It monitors and converts energy consumption into equivalent CO₂ and cost estimates with the click of a button.
- It utilizes industry-standard manageability instrumentation to deliver workforce power-consumption data to supported management consoles.



UNDERSTAND THE BIG PICTURE.

Management consoles provide IT with an important means of tracking computing trends across the enterprise. But power consumption data for notebooks has been missing—until now. HP Power Assistant data can be captured with HP Client Automation and HP Client Manager for Altiris.² IT can then use this data to generate reports, evaluate the power consumption of your enterprise environment, identify ways to lower total cost of ownership and optimize environmental policies throughout the enterprise.



HP POWER ASSISTANT



EASE OF USE



SECURITY



RELIABILITY



ENVIRONMENTAL

Look for these innovations on HP business notebooks.

LEVERAGE THE POWER OF HP PROFESSIONAL INNOVATIONS.

Available on select HP Business Notebooks, HP Power Assistant is among the many innovations that deliver an enhanced mobile computing experience. Collectively, these innovative hardware features and software solutions enhance security, improve ease of use and help enable reliability—all while keeping the environment in mind.

In short, HP Power Assistant and other HP Professional Innovations help keep you going wherever business takes you.

To learn more, visit
www.hp.com/go/professionalinnovations.

To learn more, visit www.hp.com/go/professionalinnovations

1. Power calculations and cost calculations are estimates. Results will vary based on variables, which include information provided by the user, time PC is in different power states (on, standby, hibernate, off), time PC is on battery or AC, hardware configuration, variable electricity rates and utilities provider. HP advises customers to use information reported by HP Power Assistant for reference only and to validate impact in their environment. Environmental calculations were based on U.S. EPA eGrid 2007 data found at www.epa.gov/egrid/. Regional results will vary.
2. Planned for early 2010

© Copyright 2009 Hewlett-Packard Development Company, L.P. The information contained herein is subject to change without notice. The only warranties for HP products and services are set forth in the express warranty statements accompanying such products and services. Nothing herein should be construed as constituting an additional warranty. HP shall not be liable for technical or editorial errors or omissions contained herein. Windows is a trademark of the Microsoft group of companies. Bluetooth is a trademark owned by its proprietor and used by Hewlett-Packard Company under license.

4AA2-8458ENW, September 2009

