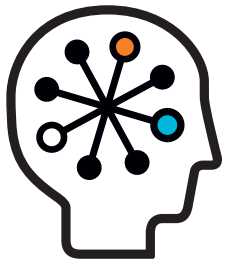


# HP Software and Aperture VISTA

Data center infrastructure management



Aperture VISTA and HP Asset Manager Software streamline provisioning and automate asset reconciliation for improved communication between finance and the data center, improving decisions and process alignment.

## Integration highlights

- Single, global repository offers consolidated view of all technology assets
- Automation standardizes processes for provisioning and reconciliation
- Visual interface provides end-to-end management of data center assets
- Comprehensive reporting finds unsynchronized assets to eliminate unrecognized assets
- Fully functional installation built with HP Connect-IT uses industry-standard protocols

Efficiently managing and tracking IT assets is becoming increasingly difficult in data centers. Department silos result in slow provisioning and decommissioning, inconsistent processes, and a lack of task synchronization that impedes resource productivity and financial reporting accuracy.

## Benefits of the Aperture solution and HP Asset Manager integration

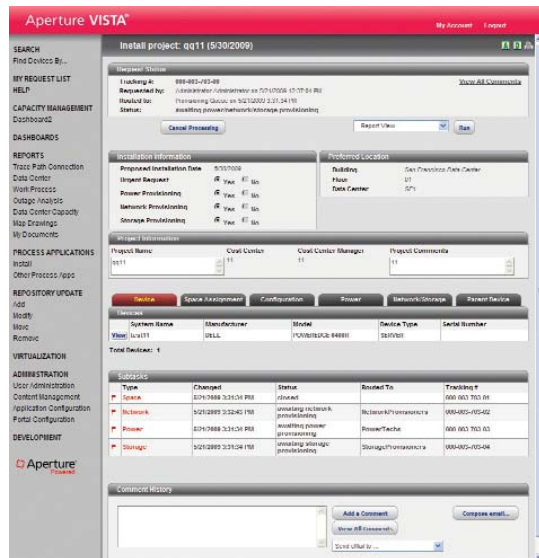
The Aperture VISTA with HP Asset Manager fully integrates the data and processes needed for asset, change and physical infrastructure management. This robust solution strengthens asset management by aligning the people and the processes responsible for overall efficiency. The out-of-the-box solution is highly configurable and will support basic or complex workflow processes. Data center staff can quickly start gaining the benefits of an integrated asset repository and consistent processes that streamline communication between IT and finance. You can effectively manage inventories and make better purchasing decisions; reduce installation time from weeks to days; optimize sourcing and reduce asset expenses; and cut costs for space, power and cooling. By holistically managing all data center assets, organizations can better align people and processes, lower costs and energy usage, improve service level agreement (SLA) performance, and increase operational control.

## Solution benefits

- Increase efficiency with aligned asset, change and physical infrastructure management
- Streamline cross-departmental tasks with lifecycle management of data center assets
- Improve SLA performance with automated workflow provisioning
- Cut energy usage and costs by recovering previously unaccounted for assets
- Optimize technology spending and sourcing with accurate asset tracking

## How the integration works

The combined workflows of HP Asset Manager and Aperture VISTA automate processes for asset installation and tracking. HP Asset Manager notifies Aperture VISTA to create an installation request and reserve the physical resources and infrastructure required for the new asset including space, storage, power and connectivity. A single click from the HP Asset Manager interface provides detailed physical data for each device.



## Certification environment

### Scan engine

Hardware: dual processor, 2 GHz or faster; system memory of at least 2 GB; system storage of at least 100 GB; network TCP/IP at 100 MBits/sec

Operating system: Microsoft® Windows® 2000 Server Standard or Advanced; or 2003 Server Standard, Enterprise Edition or R2

Software: Microsoft .NET Framework 1.1; Microsoft SQL Server 2000, Service Pack 3 or higher, or Microsoft SQL Server 2005, Service Pack 3; Microsoft IIS version 5 or 6

### Management server

Hardware: dual processor, 2 GHz or faster; system memory of at least 2 GB; system storage of at least 100 GB; network TCP/IP at 100 MBits/sec

Operating system: Microsoft Windows 2000 Server Standard or Advanced; or 2003 Server Standard, Enterprise Edition or R2

Software: Crystal Reports 10, Service Pack 5; Microsoft .NET Framework 1.1; Microsoft IIS version 5 or 6

### Database server

Hardware: 2 GHz or faster; system memory of at least 1 GB; system storage of at least 10GB; network TCP/IP

Operating system: Microsoft .NET Framework 1.1; Microsoft SQL Server 2000, Service Pack 3 or higher, or Microsoft SQL Server 2005, Service Pack 3; Microsoft IIS version 5 or 6

Software: Microsoft .NET Framework 1.1; Microsoft SQL Server 2000, Service Pack 3 or higher, or Microsoft SQL Server 2005, Service Pack 3; Microsoft IIS version 5 or 6

### Console

Hardware: Intel® Pentium® 4 processor, 2 GHz or faster, system memory of at least 1 GB, system storage of at least 10 GB

Operating system: Microsoft Windows 2000 Professional or Microsoft Windows XP

Software: Microsoft Internet Explorer version 6 or 7; Microsoft .NET Framework version 1.1, Service Pack 1; Adobe® Acrobat Reader 5 or higher

## About Aperture

Aperture software from Emerson Network Power manages the physical infrastructure of data centers, reduces operational risk, and improves efficiency through the planning and management of data center resources and real-time monitoring. Emerson Network Power, a business of Emerson, is a global leader in enabling business-critical continuity from grid-to-chip for telecommunication networks, data centers, health care and industrial facilities. The company's solutions and expertise include AC and DC power, precision cooling systems, embedded computing and power, integrated racks and enclosures, power switching and controls, infrastructure management and monitoring, and connectivity.

## For more information

For more information, visit [www.aperture.com](http://www.aperture.com) and [www.emersonnetworkpower.com](http://www.emersonnetworkpower.com).

## Technology for better business outcomes

© Copyright 2009 Hewlett-Packard Development Company, L.P. The information contained herein is subject to change without notice. The only warranties for HP products and services are set forth in the express warranty statements accompanying such products and services. Nothing herein should be construed as constituting an additional warranty. HP shall not be liable for technical or editorial errors or omissions contained herein.

Microsoft and Windows are U.S. registered trademarks of Microsoft Corporation. Intel Pentium is a trademark or registered trademark of Intel Corporation or its subsidiaries in the United States and other countries. Adobe is a trademark of Adobe Systems Incorporated.

To learn more, visit [www.hp.com](http://www.hp.com)  
<http://h20229.www2.hp.com/partner/isv/Aperture.jsp>

4AA2-6898ENW, June 2009



HP Software  
Gold Business Partner

