

ScreenCast

USB-C® Wireless Display HDMI™ Extender

JVAW62



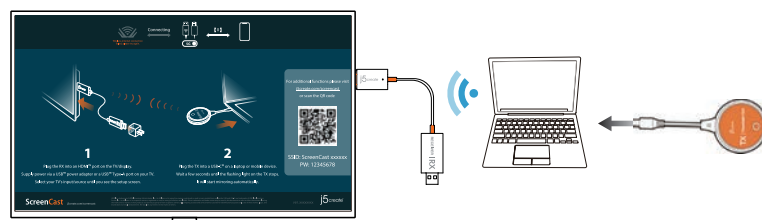
j5create.com/screencast

- EN : Quick Installation Guide
- DE : Kurzanleitung Für Installation
- FR : Guide D'installation Rapide
- IT : Guida rapida all'installazione
- NL : Beknopte installatiehandleiding
- ES : Guía De Instalación Rápida
- PT : Guia de instalação rápida
- SE : Snabbinstallationsguide
- DK: Startvejledning
- NO: Hurtiginstallationsveiledning
- FI: Pika-asennusopas
- HU: Gyors telepítési útmutató
- RU: Руководство по быстрой установке
- 日本語: クイックインストールガイド
- 繁体中文: 快速安裝手冊
- 簡體中文: 快速安裝手冊

English

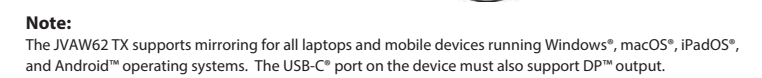
How to mirror

● **Simply plug into a laptop or mobile device**
Plug the JVAW62 TX into a USB-C® port on a laptop or mobile device. Wait a few seconds until the flashing light on the JVAW62 TX stops, and it will start mirroring automatically. If the JVAW62 TX flashes for more than 20 seconds, unplug it and then plug it back in. If it flashes for more than 20 seconds again, it will need to be paired to the JVAW62 RX.*
* See the section titled "How to pair the JVAW62 TX with the receiver" below for instructions on how to pair the TX with the RX.



● Stop and restart mirroring

Press the JVAW62 TX button to stop or restart mirroring.



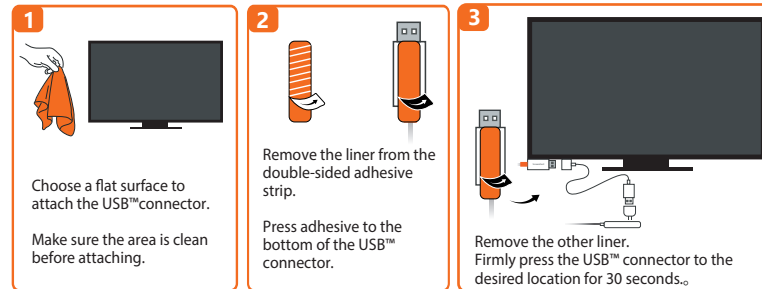
Note:
The JVAW62 TX supports mirroring for all laptops and mobile devices running Windows®, macOS®, iPadOS®, and Android™ operating systems. The USB-C® port on the device must also support DP™-output.

(Optional) Position the ScreenCast for an Optimal Streaming Experience

The USB™ Type-A connector can be attached to your TV with the double-sided adhesive strip that is included. The strip is for single-use and can be removed.

The USB™ Type-A connector is equipped with a Wi-Fi® module, antenna, and power supply; therefore, we **DO NOT** recommend placing the USB™ Type-A connector behind the TV or inside a TV cabinet. Doing so may cause a weak signal or loss of signal.

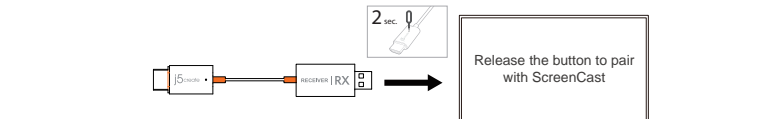
Adhesive Strip Instructions:



(Troubleshooting) How to pair the JVAW62 TX with the receiver

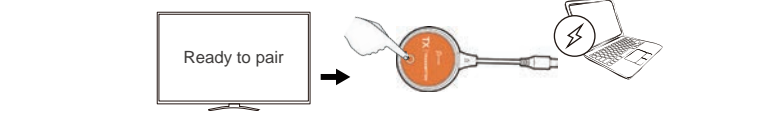
● Turn on pairing mode for the receiver

Press the reset button (or insert the pin to press) for 2 seconds on the JVAW62 wireless display receiver. Release the button when the screen shows "Release the button to pair with ScreenCast". Please make sure your receiver has been upgraded to the latest version.
For instructions on how to upgrade your device please visit <https://j5create.com/screencast/>



● Press the JVAW62 TX button

Plug the JVAW62 TX into the laptop or mobile device to provide power. Press the JVAW62 TX button to complete pairing when the screen shows "Ready to pair".



Note:
The reset button on the receiver has 3 functions, which function is performed depends on the duration the button is held down.
(1) Simple click: Switch the receiver to 2.4G/5 GHz Wi-Fi® mode.
(2) Press for 2 seconds: Turns on pairing mode for the JVAW62 TX.
(3) Press for 10 seconds: Resets the receiver to default.

English

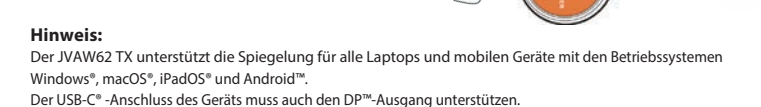
Wie man spiegelt

● **Einfach an Laptop oder Mobilgerät anschließen**
Stecken Sie den JVAW62 TX in einen USB-C®-Anschluss eines Laptops oder Mobilgeräts. Warten Sie ein paar Sekunden, bis das Licht am JVAW62 TX aufhört, und es beginnt automatisch mit der Spiegelung. Bitte stellen Sie sicher, dass Sie den JVAW62 Wireless Display Receiver installieren und koppeln, wenn er länger als 20 Sekunden leuchtet.
* Siehe den Abschnitt "So koppeln Sie den JVAW62 TX mit dem Receiver" unten für Anweisungen zum Koppeln des Senders mit dem Empfänger.



● Spiegelung stoppen und neu starten

Drücken Sie die Taste JVAW62 TX, um die Spiegelung zu stoppen oder neu zu starten



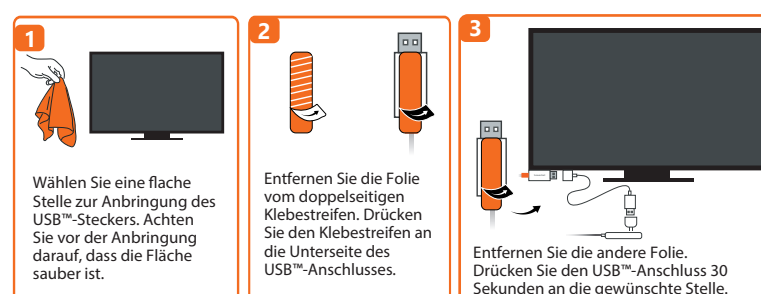
Hinweis:
Der JVAW62 TX unterstützt die Spiegelung für alle Laptops und mobilen Geräte mit den Betriebssystemen Windows®, macOS®, iPadOS® und Android™. Der USB-C®-Anschluss des Geräts muss auch das DP™-Ausgang unterstützen.

(Optional) ScreenCast für optimales Streaming-Erlebnis positionieren

Der USB™-Stecker kann mit dem im Lieferumfang enthaltenen doppelseitigen Klebstreifen an Ihrem Fernseher befestigt werden. Der Streifen ist für den einmaligen Gebrauch und kann entfernt werden.

Der USB™-Typ-A-Anschluss ist mit einem Wi-Fi®-Modul, einer Antenne und einer Stromversorgung ausgestattet; daher empfehlen wir **NICHT**, den USB™-Typ-A-Anschluss hinter dem Fernseher oder in einem Fernsehschrank anzubringen. Andernfalls kann dies zu einem schwachen Signal oder Signalverlust führen.

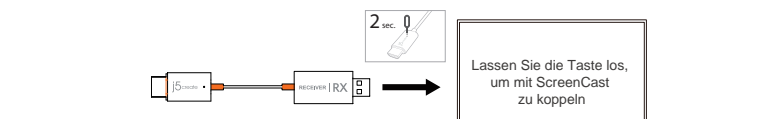
Anweisungen zum Klebstreifen:



(Troubleshooting) So koppeln Sie den JVAW62 TX mit dem Receiver

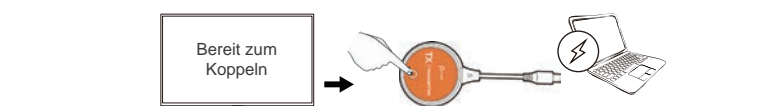
● Pairing-Modus für Receiver einschalten

Drücken Sie die Reset-Taste (oder stecken Sie den Stift zum Drücken ein) für 2 Sekunden am drahtlosen Anzeige Receiver JVAW62. Lassen Sie die Taste los, wenn auf dem Bildschirm "Lassen Sie die Taste los, um mit ScreenCast zu koppeln" angezeigt wird. Bitte stellen Sie sicher, dass Ihr Receiver auf die neueste Version aktualisiert wurde. Eine Anleitung zum Upgrade Ihres Geräts finden Sie unter <https://j5create.com/screencast/>



● Drücken Sie die TX-Taste des JVAW62

Schließen Sie den JVAW62 TX an den Laptop oder das Mobilgerät an, um es mit Strom zu versorgen. Drücken Sie die Taste des JVAW62 TX, um die Kopplung abzuschließen, während auf dem Bildschirm "Bereit zum koppeln" angezeigt wird.

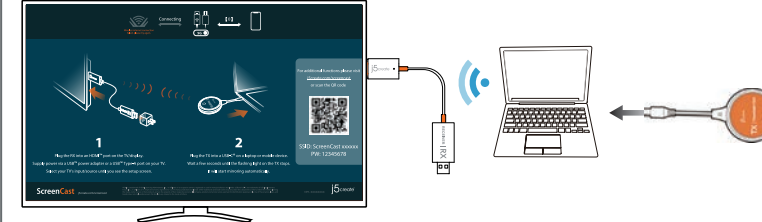


Hinweis:
Die Reset-Taste am Empfänger hat 3 Funktionen. Welche Funktion ausgeführt wird, hängt davon ab, wie lange die Taste gedrückt gehalten wird.
(1) Einfacher Klick: Schaltet den Receiver in den 2.4G/5 GHz Wi-Fi® Modus.
(2) Appuyez pendant 2 secondes: Active le mode d'appariement pour JVAW62 TX.
(3) 10 Sekunden lang drücken: Setzt den Receiver auf die Standardinstellungen zurück.

Français

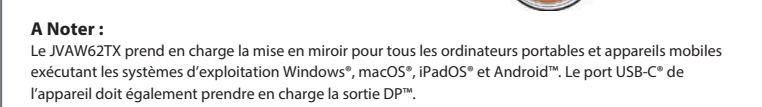
Comment mettre en miroir

● **Il suffit de brancher sur un ordinateur portable ou un appareil mobile**
Branchez le JVAW62 TX sur le port USB-C® d'un ordinateur portable ou d'un appareil mobile. Attendez quelques secondes jusqu'à ce que la lumière clignotante sur le JVAW62 TX s'arrête, et l'appareil commencera à se mettre en miroir automatiquement. Assurez-vous d'installer et d'appairer le récepteur d'affichage sans fil JVAW62 s'il clignote pendant plus de 20 secondes.
* Consultez la section intitulée « Comment coupler le JVAW62 TX avec le récepteur » ci-dessous pour obtenir des instructions sur la façon de coupler le TX avec le RX.



● Arrêter et redémarrer la mise en miroir

Appuyez sur le bouton JVAW62 TX pour arrêter ou redémarrer la mise en miroir.



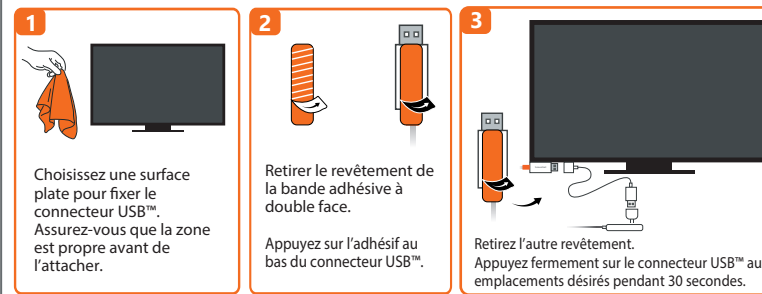
A noter :
Le JVAW62 TX prend en charge la mise en miroir pour tous les ordinateurs portables et appareils mobiles exécutant les systèmes d'exploitation Windows®, macOS®, iPadOS® et Android™. Le port USB-C® de l'appareil doit également prendre en charge la sortie DP™.

(Facultatif) Positionez le ScreenCast pour une expérience de streaming optimale

Le connecteur USB™ peut être fixé à votre téléviseur avec la bande adhésive à double face qui est incluse. La bande est à usage unique et peut être enlevée.

En raison de l'inclusion du module Wi-Fi®, antenne, et alimentation avec le connecteur USB™ Type A, nous ne recommandons pas de placer le connecteur USB™ derrière le téléviseur ou à l'intérieur d'une armoire de télévision. Cela peut provoquer un signal faible ou une perte de signal.

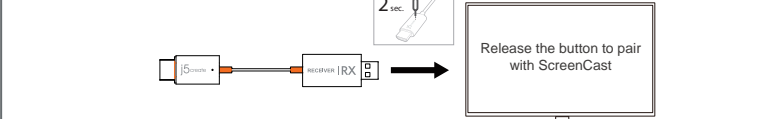
Instructions pour la Bande Adhésive:



(Dépannage) Comment coupler le JVAW62 TX avec un récepteur

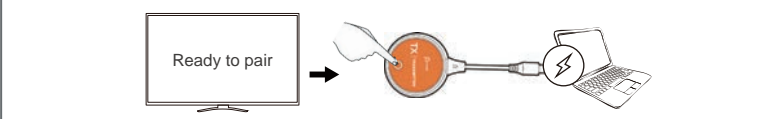
● Activez le mode d'appariement pour le récepteur

Appuyez sur le bouton de redémarrage (ou insérez la broche pour appuyer) pendant 2 secondes sur le récepteur d'affichage sans fil JVAW62. Relâchez le bouton lorsque l'écran affiche « Relâchez le bouton pour l'associer au ScreenCast ». Assurez-vous que votre récepteur a été mis à jour avec la dernière version. Pour obtenir plus d'informations sur la façon de mettre à jour votre appareil, veuillez consulter <https://j5create.com/screencast/>



● Appuyez sur le bouton JVAW62 TX

Branchez le JVAW62 TX sur l'ordinateur portable ou l'appareil mobile pour fournir de l'alimentation. Appuyez sur le bouton JVAW62 TX pour terminer l'appariement tandis que l'écran affiche « Prêt à coupler ».

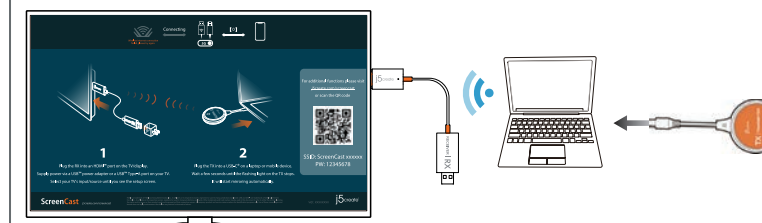


A noter :
Le bouton de redémarrage sur le récepteur a 3 fonctions, la fonction effectuée dépend de la durée pendant laquelle le bouton est maintenu enfoncé.
(1) Clic simple: Passez le récepteur en mode Wi-Fi® 2.4G/5 GHz.
(2) Appuyez pendant 2 secondes: Active le mode d'appariement pour JVAW62 TX.
(3) Appuyez pendant 10 secondes: Redémarrage du récepteur par défaut.

Italiano

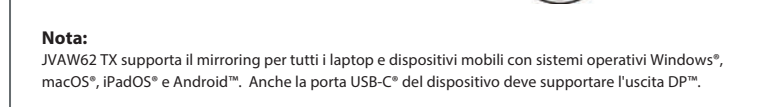
Come effettuare il mirroring

● **Basta collegarlo a un laptop o dispositivo mobile**
Collegare JVAW62 TX a una porta USB-C® di un laptop o dispositivo mobile. Attendere qualche secondo affinché la spia lampeggiante su JVAW62 TX non si arresta e avvia automaticamente il mirroring. Assicurarsi di installare e associare JVAW62 TX al ricevitore del display wireless JVAW62 se lampeggia per oltre 20 secondi.
* Vedere la sezione intitolata "Come associare JVAW62 TX con il ricevitore" di seguito per istruzioni su come associare TX a RX.



● Arresto e riavvio del mirroring

Premere il tasto JVAW62 TX per arrestare o riavviare il mirroring.



Nota:
JVAW62 TX supporta il mirroring per tutti i laptop e dispositivi mobili con sistemi operativi Windows®, macOS®, iPadOS® e Android™. Anche la porta USB-C® del dispositivo deve supportare l'uscita DP™.

(Opzionale) Posizionamento di ScreenCast per un'esperienza di streaming ottimale

Il connettore USB™ può essere collegato al televisore con la striscia adesiva biadesiva inclusa. La striscia è monouso e può essere rimossa.

Grazie al connettore USB™ di tipo A incluso modulo Wi-Fi®, antenna e alimentazione, quindi, **NON** consigliamo di posizionare il connettore USB™ dietro il televisore o all'interno di un mobile TV. Ciò potrebbe causare un segnale debole o una perdita di segnale.

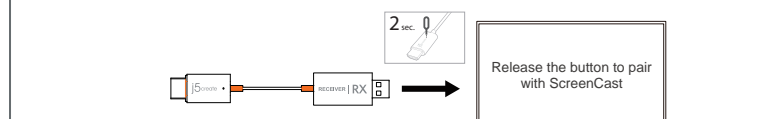
Istruzioni per la striscia adesiva:



(Risoluzione dei problemi) Come associare JVAW62 TX al ricevitore

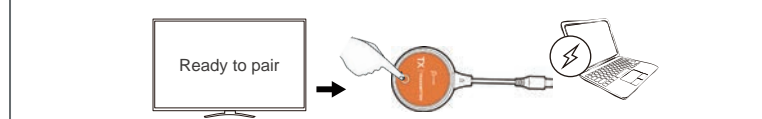
● Attivare la modalità di associazione per il ricevitore

Premere il tasto di ripristino (o inserire il perno da premere) per 2 secondi sul ricevitore del display wireless JVAW62. Rilasciare il tasto quando lo schermo mostra "Rilascia il tasto per associare a ScreenCast". Assicurarsi che il ricevitore sia stato aggiornato alla versione più recente. Per istruzioni su come aggiornare il dispositivo, visitate il sito <https://j5create.com/screencast/>



● Premere il tasto JVAW62 TX

Collegare JVAW62 TX al laptop o al dispositivo mobile per fornire alimentazione. Premere il tasto JVAW62 TX per completare l'associazione quando lo schermo mostra "Pronto per l'associazione".

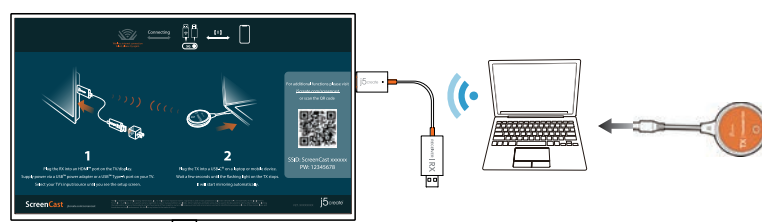


Nota:
Il tasto di ripristino sul ricevitore dispone di 3 funzioni, la cui funzione viene eseguita dipende dalla durata della pressione del tasto.
(1) Clic semplice: Commutare il ricevitore in modalità Wi-Fi® 2.4 G/5 GHz.
(2) Premere per 2 secondi: Attiva la modalità di associazione per JVAW62 TX.
(3) Premere per 10 secondi: Ripristina le impostazioni predefinite del ricevitore.

Nederlands

Spiegelen

● **Eenvoudig aan te sluiten op een laptop of mobiel apparaat**
Sluit de JVAW62 TX aan op een USB-C®-poort van een laptop of mobiel apparaat. Wacht een paar seconden tot het lampje op de JVAW62 TX stopt met knipperen, en het automatisch begint te spiegelen. Als de JVAW62 TX langer dan 20 seconden blijft branden, koppelt u deze los en sluit u het weer aan. Als het weer langer dan 20 seconden blijft branden, moet deze worden gekoppeld aan de JVAW62 RX.
Zie het gedeelte getiteld "Hoe de JVAW62 TX te koppelen met de ontvanger" hieronder voor instructies over het koppelen van de TX aan de RX.



● Spiegelen stoppen en opnieuw starten

Druk op de JVAW62 TX-knop om spiegelen te stoppen of opnieuw te starten.



Opmerking:
JVAW62 TX ondersteunt spiegelen voor alle laptops en mobiele apparaten met de besturingssystemen Windows®, macOS®, iPadOS® en Android™. De USB-C®-poort op het apparaat moet ook DP™-uitvoer ondersteunen.

(Optioneel) Plaats de ScreenCast voor een optimale streaming-ervaring

De USB™-connector kan aan uw tv worden bevestigd met de meegeleverde dubbelzijdige plakstrip. De plakstrip is bedoeld voor eenmalig gebruik en kan worden verwijderd.

De USB™ Type-A-connector is uitgerust met een Wi-Fi®-module, antenne en voeding; daarom raden wij u **NIEUW** aan om de USB™ Type-A-connector achter de tv of in een tv-kast te plaatsen. Dit kan een zwak signaal of signaalverlies veroorzaken.

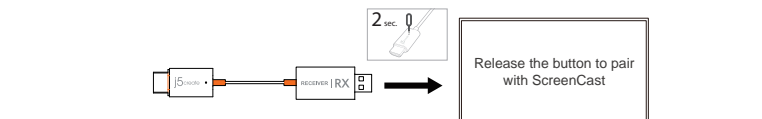
Instructies plakstrip:



(Troubleshooting) Hoe de JVAW62 TX te koppelen met de ontvanger

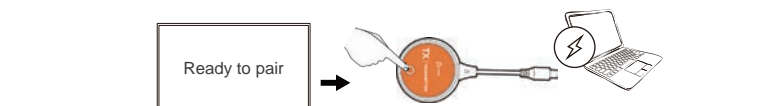
● Schakel de koppelmodus in voor de ontvanger

Houd de resetknop van de JVAW62 draadloze display ontvanger 2 seconden ingedrukt (of steek de pin in om in te drukken). Laat de knop los wanneer op het scherm "Laat de knop los om te koppelen met ScreenCast" wordt weergegeven. Zorg ervoor dat uw ontvanger is geüpgraded naar de nieuwste versie. Ga voor instructies over het upgraden van uw apparatuur naar <https://j5create.com/screencast/>



● Druk op de knop van de JVAW62 TX

Sluit de JVAW62 TX aan op de laptop of mobiele apparaat om deze van stroom te voorzien. Druk op de knop van de JVAW62 TX om het koppelen te voltooien terwijl "Gereed om te koppelen" op het scherm wordt weergegeven.

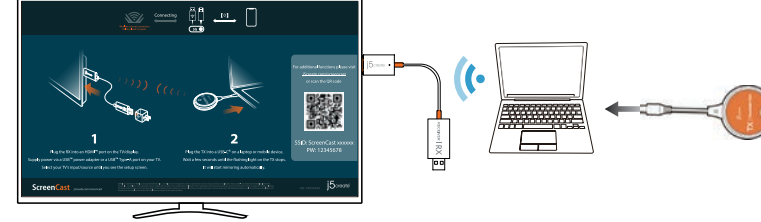


Note:
De RESET-knop op de ontvanger heeft 3 functies, afhankelijk van hoe lang de knop ingedrukt wordt gehouden.
(1) Eenvoudige klik: Schakelt de ontvanger in op de 2.4G/5 GHz Wi-Fi®-modus.
(2) Hou 2 seconden ingedrukt: Schakelt de koppelmodus in voor JVAW62 TX.
(3) Hou 10 seconden ingedrukt: Hiermee herstelt u de standaardinstellingen van de ontvanger.

Español

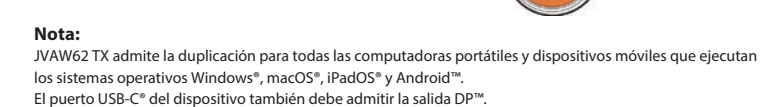
Como reflejar

● **Simplemente conéctelo a una computadora portátil o dispositivo móvil**
Conecte el JVAW62 TX a un puerto USB-C® en una computadora portátil o dispositivo móvil. Espere unos segundos hasta que a la luz parpadeante del JVAW62 TX se detenga y comenzará a reflejarse automáticamente.
* Asegúrese de instalar y emparejar el JVAW62 TX con el receptor de pantalla inalámbrico JVAW62 si se enciende durante más de 20 segundos.



● Detenga y reinicie la duplicación

Presione el botón TX JVAW62 para detener o reiniciar la duplicación.



Nota:
JVAW62 TX admite la duplicación para todas las computadoras portátiles y dispositivos móviles que ejecutan los sistemas operativos Windows®, macOS®, iPadOS® y Android™. El puerto USB-C® del dispositivo también debe admitir la salida DP™.

(Opcional) Coloque ScreenCast para una experiencia de transmisión óptima

El conector USB™ Type-A se puede conectar a su televisor con la tira adhesiva de doble cara que se incluye. La tira es para un solo uso y se puede quitar.

Debido al conector USB™ Type-A incluido, módulo Wi-Fi®, Antena y fuente de alimentación, por lo tanto, **NO** recomendamos colocar el conector USB™ Type-A detrás del televisor o dentro de un mueble de televisión. Hacerlo puede causar una señal débil o pérdida de señal.

Instrucciones de la tira adhesiva



(Solución de problemas) Cómo emparejar el JVAW62 TX con el receptor

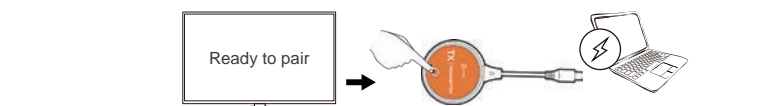
● Active el modo de emparejamiento para el receptor

Presione el botón de reinicio o inserte el pin para presionar durante 2 segundos en el receptor de pantalla inalámbrico JVAW62. Suelte el botón cuando la pantalla muestre "Suelte el botón para emparejar con ScreenCast".
Asegúrese de que su receptor se haya actualizado a la última versión. Para obtener instrucciones sobre cómo actualizar su dispositivo, visite <https://j5create.com/screencast/>



● Presione el botón TX JVAW62

Conecte el JVAW62 TX a la computadora portátil o dispositivo móvil para proporcionar energía. Presione el botón JVAW62 TX para completar el emparejamiento cuando la pantalla muestre "Listo para emparejar".

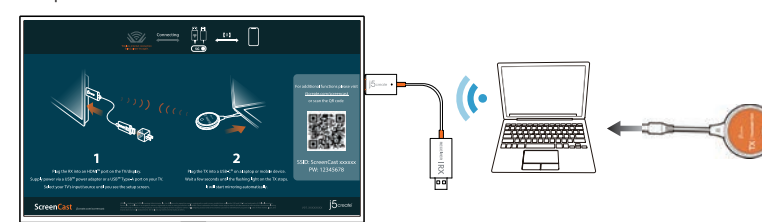


Nota:
El botón de reinicio del receptor tiene 3 funciones, cuya función se realiza depende del tiempo que se mantenga presionado el botón.
(1) Presione simple: cambie el receptor al modo Wi-Fi® de 2.4G/5 GHz.
(2) Presione para 2 segundos: active el modo de emparejamiento para el JVAW62 TX.
(3) Presione durante 10 segundos: restablece el receptor a los valores predeterminados.

Português

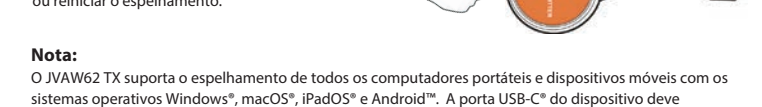
Como espelhar

● **Basta ligar a um computador portátil ou dispositivo móvel**
Ligue o JVAW62 TX a uma porta USB-C® de um computador portátil ou dispositivo móvel. Aguarde alguns segundos até que a luz do JVAW62 TX pare de piscar, e o espelhamento iniciará automaticamente. Instale e emparelhe o JVAW62 TX ao receptor de monitor sem fios JVAW62 se o indicador piscar durante mais de 20 segundos.
* Consulte a secção "Como emparelhar o JVAW62 TX com o receptor" para obter instruções sobre como emparelhar o transmissor com o receptor.



● Parar e reiniciar o espelhamento

Pressione o botão do JVAW62 TX para parar ou reiniciar o espelhamento.



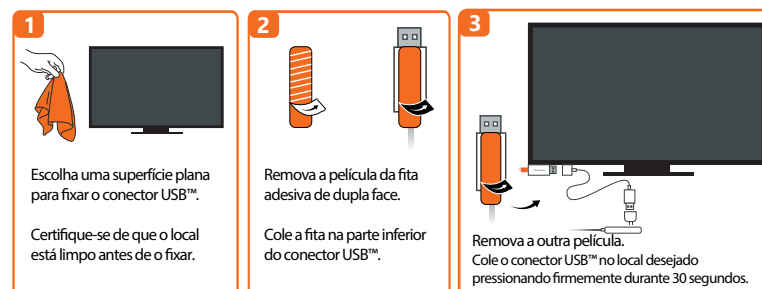
Nota:
O JVAW62 TX suporta o espelhamento de todos os computadores portáteis e dispositivos móveis com os sistemas operativos Windows®, macOS®, iPadOS® e Android™. A porta USB-C® do dispositivo deve também suportar a saída DP™.

(Opcional) Posicionar o ScreenCast para uma experiência ideal de transmissão

O conector USB™ pode ser afixado na sua TV com a fita adesiva de dupla face fornecida com o produto. A fita é de utilização única e pode ser removida.

Devido ao conector USB™ Tipo A incluído módulo Wi-Fi®, antena e fonte de alimentação, portanto, **NÃO** recomendamos a colocação do conector USB™ atrás da TV ou no interior de um armário de TV. Se o fizer pode originar perda ou degradação do sinal.

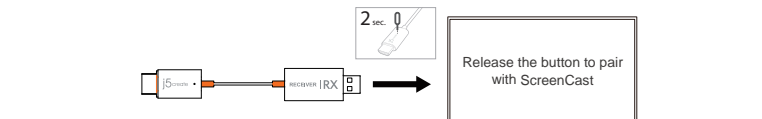
Instruções para colocação da fita adesiva:



(Resolução de problemas) Como emparelhar o JVAW62 TX com o receptor

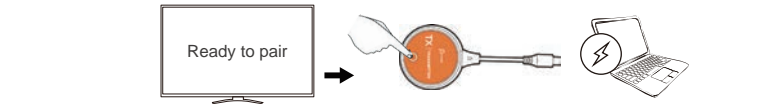
● Ativar o modo de emparelhamento no receptor

Pressione o botão de reposição (ou insira um alfinete para pressionar) durante 2 segundos no receptor de monitor sem fios JVAW62. Liberte o botão quando o ecrã mostrar a mensagem "Liberte o botão para emparelhar com ScreenCast". Certifique-se de que o seu receptor está atualizado para a versão mais recente. Para obter instruções sobre como atualizar o seu dispositivo, visite <https://j5create.com/screencast/>



● Pressione o botão JVAW62 TX

Ligue o JVAW62 TX ao computador portátil ou dispositivo móvel para fornecer energia. Pressione o botão do JVAW62 TX para concluir o emparelhamento quando o ecrã mostrar a mensagem "Preparado para emparelhar".

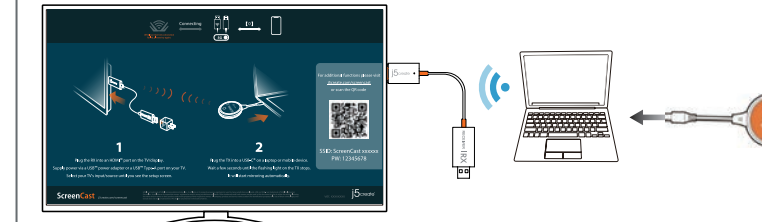


Nota:
O botão de reposição do receptor disponibiliza 3 funções, cuja seleção depende do tempo durante o qual o botão é pressionado.
(1) Clique simples: Mudar o receptor para o modo de Wi-Fi® 2.4G/5 GHz.
(2) Pressionar durante 2 segundos: Ativa o modo de emparelhamento do JVAW62 TX.
(3) Pressionar durante 10 segundos: Repõe as definições do receptor.

Svenska

Hur du speglar

● **Anslut till en bärbar dator eller en mobil enhet**
Anslut JVAW62 TX till en USB-C®-port på en bärbar dator eller mobil enhet. Vänta några sekunder tills den blinkande lampan på JVAW62 TX slutar att blinka, så börjar speglingen automatiskt. Se till att installera och koppla JVAW62 TX till JVAW62-mottagaren för trådlös visning om den blinkar i över 20 sekunder.
* Se avsnittet "Hur du kopplar ihop JVAW62 TX med mottagaren" nedan för instruktioner om hur du kopplar TX till RX.



● Stoppa och starta om spegling

Tryck på JVAW62 TX-knappen för att stoppa eller starta om speglingen.



Obs!
JVAW62 TX stöder spegling för alla bärbara datorer och mobila enheter som kör operativsystemen Windows®, macOS®, iPadOS® och Android™. USB-C®-porten på enheten måste också stödja DP™-utgång.

(Tillval) Placera ScreenCast-enheten för optimal streamingupplevelse

USB™-kontakten kan anslutas till din TV med den dubbelzijdige självhäftande remsan som medföljer. Remsan är för engångsbruk och kan tas bort.

FCC Warning Statements

This equipment has been tested and found to comply with the limits for a Class B digital device, pursuant to part 15 of the FCC Rules. These limits are designed to provide reasonable protection against harmful interference in a residential installation. This equipment generates, uses and can radiate radio frequency energy and, if not installed and used in accordance with the instructions, may cause harmful interference to radio communications. However, there is no guarantee that interference will not occur in a particular installation. If this equipment does cause harmful interference to radio or television reception, which can be determined by turning the equipment off and on, the user is encouraged to try to correct the interference by one or more of the following measures:

- Reorient or relocate the receiving antenna.
- Increase the separation between the equipment and receiver.
- Connect the equipment into an outlet on a circuit different from that to which the receiver is connected.
- Consult the dealer or an experienced radio/TV technician for help. This device complies with part 15 of the FCC Rules. Operation is subject to the following two conditions: (1) This device may not cause harmful interference, and (2) this device must accept any interference received, including interference that may cause undesired operation. changes or modifications not expressly approved by the party responsible for compliance could void the user's authority to operate the equipment.

FCC RF Exposure Warning

- This device has been evaluated to meet general RF exposure requirements. The device can be used in portable exposure conditions without restriction.
- The product is restricted for indoor use only.

NCC 警語

依據(低功率射頻器材技術規範)

取得審驗證明之低功率射頻器材(非經核准之公司、商號或使用者均不得擅自變更重大)加大功率或變更原設計之特性及功能。低功率射頻器材之使用不得影響航航安全及干擾合法通信；經發現有干擾現象時，應立即停用，並改善至無干擾時方得繼續使用。前述合法通信，指依電信管理法規作業之無線電通信。低功率射頻器材須忍受合法通信或工業、科學及醫療用電磁輻射電場設備之干擾。

Limited Warranty

J5create offers a limited 1-year warranty. User's wear & tear damage is not included. The user shall call or email J5create customer service with the defect information of the product and obtain a return authorization number. Users are responsible for one-way return freight cost and we will take care of one-way freight back. In order to obtain a return authorization number, users should have the following information handy when calling or emailing the service team:

- (i) a copy of the original purchase invoice to verify your warranty
- (ii) a product serial number
- (iii) a description of the problem
- (iv) customer's name, address, and telephone number

J5create does not warrant that the operation of the product will be uninterrupted or error-free. J5create is not responsible for damage arising from failure to follow instructions relating to the product's use. This warranty does not apply to: (a) consumable parts, unless damage has occurred due to a defect in materials or workmanship; (b) cosmetic damage, including but not limited to scratches, dents, and broken plastic on ports; (c) damage caused by use with non-J5create products; (d) damage caused by natural disasters; (e) damage caused by human misuse (lost, accident, abuse, misuse or other external causes); (f) damage caused by operating the product outside the permitted or intended uses described by J5create; (g) damage caused by service (including upgrades and expansions) or anyone who is not an authorized service provider; or a J5create Authorized Service Provider; (h) a product or part that has been modified to alter functionality or capability without the written permission of J5create; or (i) if any J5create serial number on the product has been removed or defaced. If such a situation occurs, J5create will calculate the cost of materials and repair for your reference. This warranty is given by J5create in lieu of any other warranties expressed or implied.

Limitation of Warranty

THIS WARRANTY GIVES YOU SPECIFIC LEGAL RIGHTS, AND YOU MAY HAVE OTHER RIGHTS THAT VARY FROM STATE TO STATE OR BY COUNTRY OR PROVINCE. OTHER THAN AS PERMITTED BY LAW, J5CREATE DOES NOT EXCLUDE, LIMIT OR SUSPEND OTHER RIGHTS YOU MAY HAVE, INCLUDING THOSE THAT MAY ARISE FROM THE NONCONFORMITY OF A SALES CONTRACT. FOR A FULL UNDERSTANDING OF YOUR RIGHTS YOU SHOULD CONSULT THE LAWS OF YOUR COUNTRY, PROVINCE OR STATE. TO THE EXTENT NOT PROHIBITED BY LAW IN YOUR STATE, PROVINCE, JURISDICTION OR COUNTRY, THIS WARRANTY AND THE REMEDIES SET FORTH ARE EXCLUSIVE AND IN LIEU OF ALL OTHER WARRANTIES, REMEDIES AND CONDITIONS, WHETHER ORAL, WRITTEN, STATUTORY, EXPRESS OR IMPLIED.

J5CREATE'S RESPONSIBILITY FOR MALFUNCTIONS AND DEFECTS IN HARDWARE AND/OR SOFTWARE IS LIMITED TO REPAIR OR REPLACEMENT AS SET FORTH IN THIS WARRANTY. J5CREATE'S LIABILITY DOES NOT EXTEND BEYOND THE REMEDIES PROVIDED FOR IN THIS LIMITED WARRANTY, AND J5CREATE DOES NOT ACCEPT LIABILITY FOR CONSEQUENTIAL OR INCIDENTAL DAMAGES. FOR THIRD-PARTY CLAIMS AGAINST YOU FOR DAMAGES, FOR PRODUCTS NOT BEING AVAILABLE FOR USE, OR FOR LOSS OF OR DAMAGED DATA OR SOFTWARE, J5CREATE DOES NOT WARRANT THAT THE OPERATION OF ANY J5CREATE PRODUCT WILL BE UNINTERRUPTED OR ERROR FREE.

J5CREATE'S LIABILITY IN ANY SITUATION WILL BE NO MORE THAN THE AMOUNT YOU PAID FOR THE SPECIFIC PRODUCT THAT IS THE SUBJECT OF A CLAIM. THIS IS THE MAXIMUM AMOUNT FOR WHICH WE ARE RESPONSIBLE, EXCEPT FOR THE EXPRESS WARRANTIES CONTAINED IN THIS WARRANTY AND TO THE EXTENT NOT PROHIBITED BY LAW. J5CREATE DISCLAIMS ALL OTHER WARRANTIES AND CONDITIONS, EXPRESS OR IMPLIED, STATUTORY OR OTHERWISE, INCLUDING WITHOUT LIMITATION, WARRANTIES OF MERCHANTABILITY, MERCHANTABILITY AND FITNESS FOR A PARTICULAR PURPOSE AND WARRANTIES AND CONDITIONS AGAINST HIDDEN OR LATENT DEFECTS. SOME STATES, PROVINCES, JURISDICTIONS OR COUNTRIES DO NOT ALLOW DISCLAIMERS OF IMPLIED WARRANTIES AND CONDITIONS, SO THIS DISCLAIMER MAY NOT APPLY TO YOU.

TO THE EXTENT SUCH WARRANTIES AND CONDITIONS CANNOT BE DISCLAIMED UNDER THE LAWS OF THE UNITED STATES, CANADA AND ITS PROVINCES OR OTHERWISE, J5CREATE LIMITS THE DURATION AND REMEDIES OF SUCH WARRANTIES AND CONDITIONS TO THE DURATION OF THIS EXPRESS LIMITED WARRANTY AND, AT J5CREATE'S OPTION, REPAIR OR REPLACEMENT SERVICES. SOME STATES, PROVINCES, JURISDICTIONS OR COUNTRIES MAY NOT ALLOW LIMITATIONS ON HOW LONG AN IMPLIED WARRANTY OR CONDITION MAY LAST, SO THE LIMITATION DESCRIBED ABOVE MAY NOT APPLY TO YOU.

NO WARRANTIES OR CONDITIONS, WHETHER EXPRESS OR IMPLIED, WILL APPLY AFTER THE LIMITED WARRANTY PERIOD HAS EXPIRED. SOME STATES, PROVINCES, JURISDICTIONS OR COUNTRIES DO NOT ALLOW LIMITATIONS ON HOW LONG AN IMPLIED WARRANTY OR CONDITION LASTS, SO THIS LIMITATION MAY NOT APPLY TO YOU.

WARRANTY SUPPORT ONLY APPLIES WHEN THE COVERED PRODUCT IS LOCATED WITHIN THE COUNTRY IN WHICH J5CREATE ORIGINALLY SOLD THE SYSTEM. AS REFLECTED IN J5CREATE'S RECORDS, IF YOU NEED SUPPORT FOR THE PRODUCT OUTSIDE OF THE COUNTRY OF ORIGIN (FOR EXAMPLE WHILE TRAVELING, OR IF THE SYSTEM HAS BEEN RELOCATED TO A NEW COUNTRY), THEN J5CREATE MAY OFFER YOU OTHER SUPPORT OPTIONS FOR AN ADDITIONAL CHARGE.

For more information please visit our website at <http://www.j5create.com>

Copyright© 2022 J5create. All rights reserved. All trade names are registered trademarks of their respective owners. Features and specifications are subject to change without notice. Product may not be exactly as shown in the diagrams.

STOP!

If you have any problems with this product, please contact our technical support team for assistance.

TECHNICAL SUPPORT

Customer Service : **888-988-0488**

Technical Support : **888-689-4088**

Email : service@j5create.com

Service Hours : **Mon. - Fri. 10:00 - 18:00 E.S.T**

SOPORTE TÉCNICO

Número gratuito: +1-888-988-0488
Horario de atención:
Lun-Vier. 10:00 a.m - 6:00 U.S.A.-E.S.T
Email: service@j5create.com

Kaijet Technology International B.V.

Telefoonnummer: +31-(0)6-2880 2882
Adres: Zoermeord 20
Rotterdam, Netherlands 3068MZ
E-mail: service@j5create.com

TECHNISCHER SUPPORT

Kostenlos Anruf bei:
+1-888-988-0488
Sprechstunden:
Mon.-Frei. 10:00 – 18:00 U.S.A.-E.S.T
E-mail: service@j5create.com

TECHNIKAİ SEGİTİŐ

Yardımlarınız için ücretsiz çağrı:
+1-888-988-0488
Konuşma saatleri:
Pazartesi - Cuma 10:00 – 18:00 U.S.A.-E.S.T
E-posta: service@j5create.com

SUPPORT TECHNIQUE

Numéro gratuit :
+1-888-988-0488
Heures d'ouverture :
Lun.-Ven. 10:00 a.m – 06:00 U.S.A.-E.S.T
Email : service@j5create.com

TECHNICKÁ PODPORA

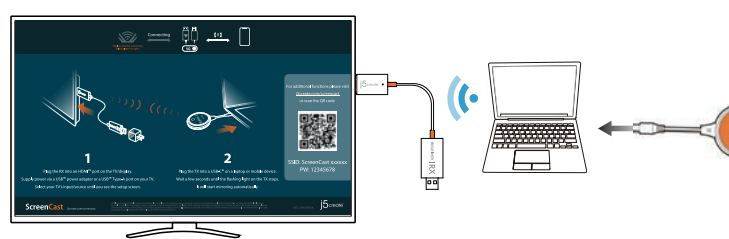
Zákaznická linka: 888-988-0488
Technická podpora: 888-689-4088
E-mail: service@j5create.com

USB-C and USB are trademarks of USB Implementers Forum, Inc. Its affiliates or its respective owners, registered or used in many jurisdictions worldwide. HDMI is a trademark of HDMI Licensing Administrator, Inc. Its affiliates or its respective owners, registered or used in many jurisdictions worldwide. Windows is a trademark of Microsoft Corp. Its affiliates or its respective owners, registered or used in many jurisdictions worldwide. macOS, iPadOS, and Apple are trademarks of Apple Inc., its affiliates or its respective owners, registered or used in many jurisdictions worldwide. Android is a trademark of Google LLC. Its affiliates or its respective owners, registered or used in many jurisdictions worldwide. Or a trademark of other trademarks of their respective owners, registered or used in many jurisdictions worldwide. Other trademarks and trade names may be used in this document to refer to the entities, claiming the marks and/or names on their products and as the property of their respective owners. All company, product and service names used are for identification purposes only. Use of these names, logos, and brands does not imply endorsement. We disclaim any interest in the marks of others.

Dansk

Sådan spejles enheden

● **Du skal blot tilslutte en bærbar computer eller en mobilenhed**
Slut din JVAW62 TX til en USB-C* port på en bærbar computer eller en mobilenhed. Vent et par sekunder, indtil indikatoren på din JVAW62 TX holder op med at blinke, hvorefter enheden automatisk spejles. Hvis indikatoren på din JVAW62 TX blinker i mere end 20 sekunder, skal du trække stikket ud og tilslutte det igen. Hvis indikatoren blinker i mere end 20 sekunder igen, skal enheden igen parres med din JVAW62 RX*.
* I afsnittet "Sådan parres din JVAW62 TX med modtageren" kan du se, hvordan du parrer din TX med din RX.



● Sådan stoppes og genstartes spejlingen

Tryk på knappen JVAW62 TX for at stoppe eller genstarte spejlingen

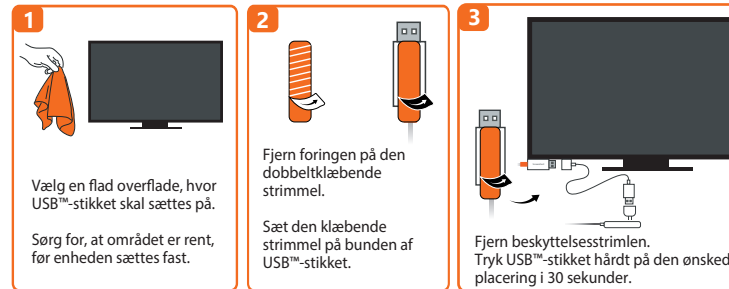
Bemærk:
JVAW62 TX kan bruges til spejling på alle bærbare computer og mobilenheder, der bruger Windows*, macOS*, iPadOS* og Android**.
USB-C*-porten på enheden skal også understøtte DP**.

(Ekstraudstyr) Sådan placeres din ScreenCast, så du får optimal streamingoplevelse

USB™ Type-A-stikket kan slutes til tv med den medfølgende dobbeltsidige klistrende striemel. Strimelen er til engangsbrug og den kan tages af.

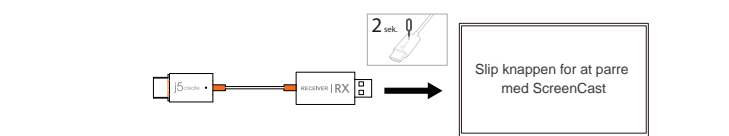
USB™ Type-A-stikket er udstyret med Wi-Fi®-modul, en antenne og en strømforsyning. Det anbefales derfor IKKE at sætte USB™ Type-A-stikket bag tv'et eller i et tv-skab. Hvis du gør dette, kan signalet blive svagt eller du kan miste signalet helt.

Vejdningjer til de selvklebende striemer:

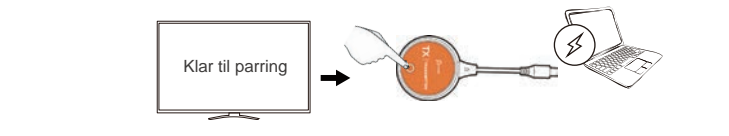


(Fejlfinding) Sådan parres din JVAW62 TX med modtageren

● **Slå paringsfunktionen til på modtageren**
Hold nulstillingknappen (eller hold den nede med en stift) i 2 sekunder på den trådløse skærmmodtager JVAW62. Slip knappen, når skærmen viser "Slip knappen for at parre med ScreenCast". Sørg for, at din modtager er blevet opgraderet til den seneste version.
På hjemmesiden <https://j5create.com/screenscast/> kan du se, hvordan enheden opgraderes.



● **Tryk på JVAW62 TX-knappen**
Slut din JVAW62 TX til din bærbar computer eller din mobilenhed for, at forsyne strøm. Tryk på knappen JVAW62 TX for at genneføre paringen, når skærmen viser "Klar til parring".



Bemærk:
Nulstillingknappen på modtageren har 3 funktioner. Hvilken funktion der udføres afhænger af, hvor længe knappen holdes nede.
(1) Et tryk på knappen: Modtageren skifter mellem 2,4G/5 GHz på Wi-Fi*
(2) Knappen holdes nede i 2 sekunder: Aktiverer paringsfunktionen på JVAW62 TX.
(3) Knappen holdes nede i 10 sekunder: Nulstiller modtageren til standard.

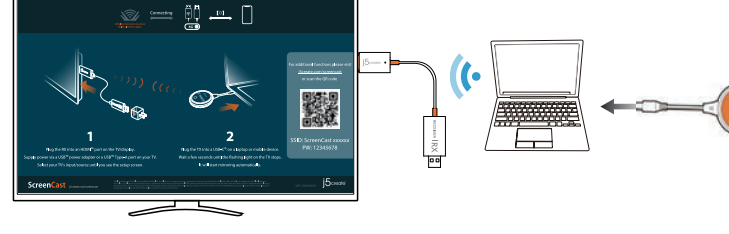
Русский

Беспроводной USB-C*HDMI™ дисплей ScreenCast с трансмиттером (JVAW62)

Технические особенности
● Беспроводное дублирование или расширение экрана USB-C* смартфона, планшета или ноутбука на ТВ или проектор
● Поддержка контента в разрешении Full HD 1080p через HDMI™
● Совместимость с HDCP 1.4 и DRM позволяет смотреть ваши любимые шоу и фильмы на Netflix*, Amazon Prime Video™, Hulu™, DISNEY+™ и др. стриминговых сервисах
● Поддержка двух динамиков мощностью 2W (2 x 1 Вт) обеспечивает стабильное соединение и плановое изображение
● Для удобства в комплекте входит USB™ Type-A удлинитель
● Портативный дизайн идеально подходит для дома, офиса, а также для того, чтобы взять с собой
● Щелк бего-оранжевый
● Установка драйвера не требуется

Как дублировать экран

● **Просто подключите к ноутбуку или мобильному устройству**
Просто подключите трансмиттер (TX) JVAW62 к USB-C* порту на ноутбуке или мобильном устройстве. Подожмите несколько секунд, пока индикатор на JVAW62 TX оживает, после чего дублирование экрана начнется автоматически. Если индикатор JVAW62 TX мигает более 20 секунд, отключите его, а затем подключите снова. Если он снова мигает более 20 секунд, JVAW62 TX необходимо привязать к JVAW62 RX вручную*.
* Инструкцию по сопряжению см. ниже в разделе «Как привязать JVAW62 TX к ресиверу».



● **Отключите и перезапустите дублирование**
Нажмите клавишу на JVAW62 TX, чтобы остановить или перезапустить дублирование.

Примечание:
JVAW62 TX поддерживает дублирование для всех ноутбуков и мобильных устройств на базе Windows*, macOS*, iPadOS* и Android**. USB-C* порт на устройстве также должен поддерживать DP** Alt Mode.

(Опционально) Расположите ScreenCast для получения наилучшего качества сигнала

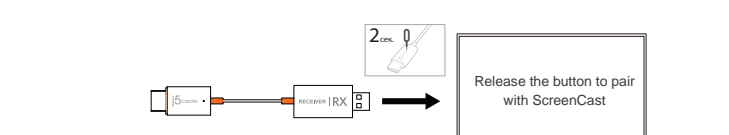
USB™ Type-A разъем может быть подключен к телевизору с помощью двусторонней клейкой ленты, входящей в комплект. Лента предназначена для однократного использования и может быть удалена.
USB™ Type-A разъем оснащен Wi-Fi® модулем, антенной и блоком питания, поэтому мы НЕ рекомендуем размещать USB™ Type-A разъем за телевизором или внутри корпуса телевизора. Это может ослабить сигнал или привести к его потере.

Инструкция по использованию клейкой ленты:

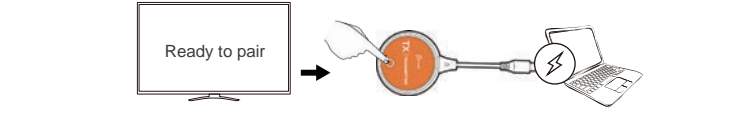


(Решение проблемы) Как привязать JVAW62 TX к ресиверу

● **Включите режим сопряжения для ресивера**
Зажмите клавишу сброса на приемнике JVAW62 (или вставьте булавку для нажатия) в течение 2 секунд. Отпустите клавишу после того, как на экране появится сообщение «Release the button to pair with ScreenCast». Пожалуйста, убедитесь, что ваш приемник был обновлен до последней версии. Инструкцию по обновлению устройства см. на странице <https://j5create.com/screenscast/>.



● **Нажмите клавишу на JVAW62 TX**
Подключите JVAW62 TX к ноутбуку или мобильному устройству, чтобы обеспечить питание. Нажмите клавишу на JVAW62 TX для завершения сопряжения после того, как на экране появится сообщение «Ready to pair».

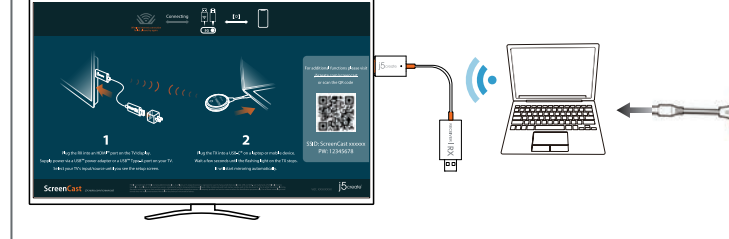


Примечание:
Клавиша сброса на приемнике имеет 2 функции, назначение которых зависит от продолжительности нажатия клавиши.
(1) Простое нажатие: переключение приемника в режим Wi-Fi* 2,4G/5 ГГц.
(2) Нажатие и удержание в течение 2 секунд: включение режима сопряжения для JVAW62 TX.
(3) Нажатие и удержание в течение 10 секунд: сброс настроек приемника по умолчанию.

Norsk

Hvordan speile

● **Bare koble til en bærbar PC eller mobilenhed**
Koble JVAW62 TX til en USB-C* port på en bærbar PC eller mobilenhed. Vent noen sekunder til lyset på JVAW62 TX slutter å blinke, så begynner speiling automatisk. Hvis JVAW62 TX blinker i mer enn 20 sekunder, kobler du den fra og kobler til på nytt. Hvis den blinker i mer enn 20 sekunder igjen, må den pares med JVAW62 RX*.
* Se delen med tittelen «Hvordan pare JVAW62 TX med mottakeren» nedenfor for instruksjoner om hvordan du parer sender med mottaker.



● Stopp og start speiling på nytt

Trykk JVAW62 TX-knappen for å stoppe eller starte speiling på nytt

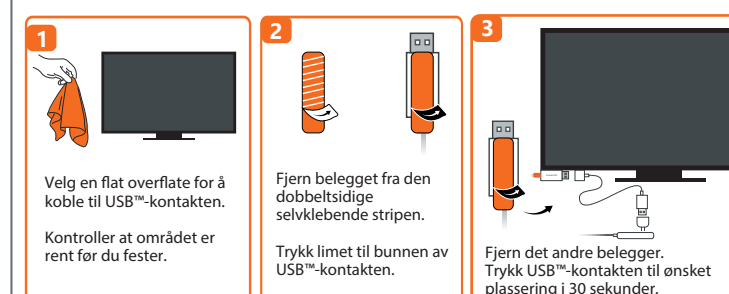
Obs:
JVAW62 TX støtter speiling for alle bærbare datamaskiner og mobile enheter som kjører operativsystemene Windows*, macOS*, iPadOS* og Android**.
USB-C*-porten på enheten må også støtte DP**-utgang.

(Valgfritt) Plasser ScreenCast-enheten for en optimal strømmeopplevelse

USB™ Type-A-kontakten kan kobles til TV-en med den medfølgende dobbeltsidige sekklepende stripen. Stripen er til engangsbruk og ikke stå voi poista.

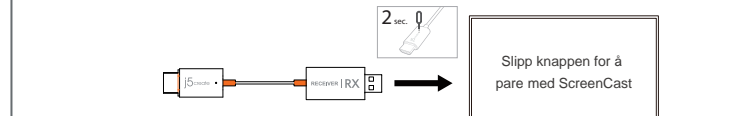
USB™ Type-A-kontakten er utstyrt med en Wi-Fi®-modul, antenne og strømforsyning. Derfor anbefaler vi IKKE at du plasserer USB™ Type-A-kontakten bak TV-en eller inne i et TV-skab. Det kan føre til et svakt signal eller tap av signal.

Instruksjoner for selvklebende stripe:

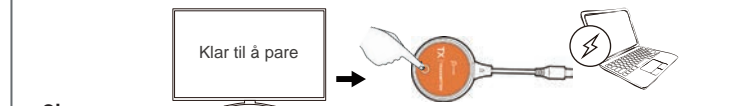


(Feilsøking) Hvordan pare JVAW62 TX med mottakeren

● **Slå på paringsmodus for mottakeren**
Trykk tilbakestillingsknappen (eller sett inn pinnen for å trykke) i 2 sekunder på JVAW62 trådløs skjermmodtager. Slip knappen når skjermen viser «Slipp knappen for å pare med ScreenCast». Sørg for at mottakeren er oppgradert til siste versjon.
Du finner instruksjoner om hvordan du oppgraderer enheten på <https://j5create.com/screenscast/>.



● **Trykk på JVAW62 TX-knappen**
Koble JVAW62 TX til den bærbare datamaskinen eller mobilenheten for å gi strøm. Trykk på JVAW62 TX-knappen for å fullføre paring når skjermen viser «Klar til å pare».

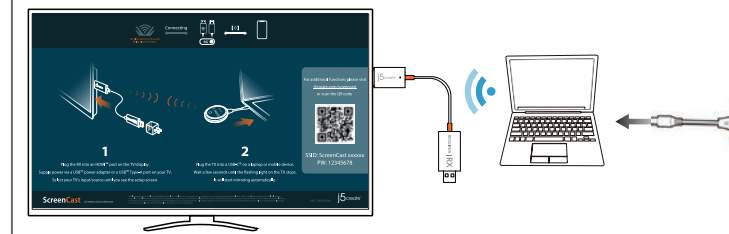


Obs:
Tilbakestillingsknappen på mottakeren har 3 funksjoner. Hvilken funksjon som utføres, avhenger av hvor lenge knappen holdes nede.
(1) Enkelt klikk: Bytt mottakeren til 2,4G/5 GHz Wi-Fi*-modus.
(2) Hold inne i 2 sekunder: Slå på paringsmodus for JVAW62 TX.
(3) Hold inne i 10 sekunder: Tilbakestill mottakeren til standard.

日本語

ミラーリング方法

● **端末に接続すれば簡単に使用できます**
JVAW62のRX (受信機) をテレビに接続して、TX (送信機) をUSB-Cが備ったノートPCかモバイル端末に接続してからTXのLEDライトが点滅し、数分待つてからミラーリングが開始します。もし20秒以上点滅してミラーリング開始しない場合は、JVAW62TXとRXを改めてペアリングしてください。ペアリングする方法は「参考情報」をご覧ください。
※ JVAW62 TXの初期値は、接続された機器のUSB-C*ポートがDP**出力(ビデオ出力)であることをサポートしている必要があります。Windows*, macOS*, iPadOS*, およびAndroid**に対応しています。

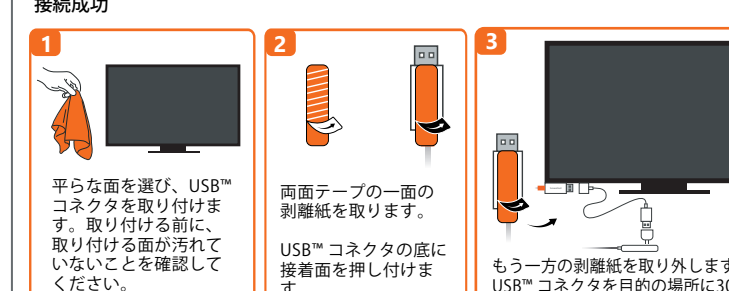


● **ミラーリングを停止および再開します**
JVAW62 TXボタンはミラーリング停止と再開ができます

※ **備考**
RXは無線投影AirPlay™とMiracast™に対応しているため、TXを使用せずに端末から直接ミラーリングすることができます。詳細はホームページに参照してください。

(付属品) はがせる両面テープUSB™ 端子側を固定することで配線がスッキリ

同梱されている両面テープをUSB™ Type-A端子側に貼って固定することができます。両面テープははがせますが、一回しか使えません。本機の受信機はUSB™端子側のため、テレビの裏やテレビ機の中に入れては推奨しません。信号が弱られて弱くなることがあります。

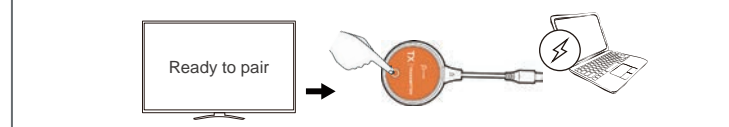


(トラブルシューティング) JVAW62TX をRXとペアリングする方法

● **RXのペアリングモードをONにします**
JVAW62 RXをTVに挿しこむと、リセットPIN穴にPINで2秒間ど押しします。TV画面上に「Release the button to pair with ScreenCast」が表示されてからPINを放します。先にRXが最新バージョンにアップデートされていることを確認してください。デバイスやアップグレードする方法については次をご覧ください。
<https://j5create.com/screenscast/>



● **JVAW62 TXボタンを押します**
JVAW62 TXをノートPCまたはモバイル端末に接続して給電された後、TXボタンを数秒ほど長押しし、画面上に「Ready to pair」が表示します。ペアリング完了したら自動的にミラーリング開始します。

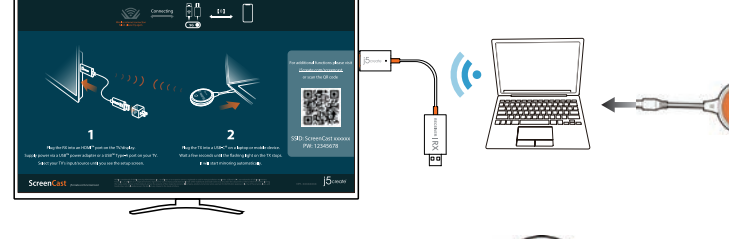


※ **備考**
RXのリセットPIN穴は押し時間によって下記3つの機能があります。
(1) 押しだけ：受信機を2.4G/5 GHz Wi-Fi*モードに切り替えます。
(2) 2秒間押し：JVAW62TXのペアリングモードをONにします。
(3) 10秒間押し：受信機をリセットして初期化します。

Suomi

Peilaaminen

● **Liitä vain kannettavaan tai mobiililaitteeseen**
Kobla JVAW62 TX kannettavaan tai mobiililaitteeseen USB-C* porttiin. Odota muutama sekunti, kunnes JVAW62 TX:n vilkkuva valo sammuu, läte alottaa peilauksen automaattisesti. Jos JVAW62 TX vilkkuu yli 20 sekuntia, irota se verkkovierasta ja liitä sita uudelleen. Jos se vilkkuu yli 20 sekuntia uudelleen, se on paritettava JVAW62 RX:n kanssa*.
* Katso alla olevasta "Kuinka JVAW62 TX paritetaan vastaanottimen kanssa"-osasta ohjeet TX:n ja RX:n parittamisesta.



● Pysäytä peilaus ja käynnistä se uudelleen

Paina JVAW62 TX -painiketta pysäyttääksesi peilauksen tai käynnistääksesi sen uudelleen

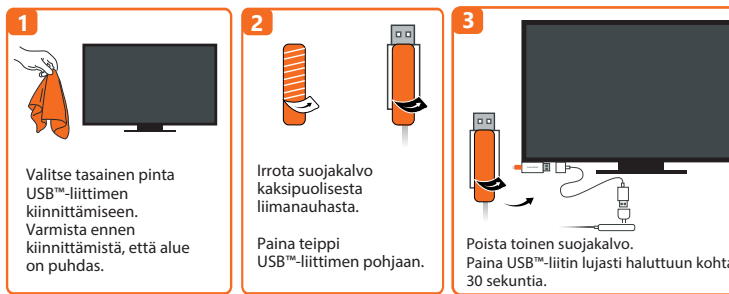
Huomautus:
JVAW62 TX tukee peilausta kaikissa kannettavissa ja mobiililaitteissa, joissa on Windows*, macOS*, iPadOS* tai Android** -käyttöjärjestelmä.
Laitteen USB-C*-porttiin on tuettava myös DP**-lähtö.

(Valinnainen) Sijoita ScreenCast saadaksesi optimaalisen strimauskokemuksen

USB™ Type-A-liittimen voi kiinnittää TV-vastaanottimeen toimitukseen kuuluvalla kaksipuolisella teipillä. Teippi on kertakäyttöinen eikä sitä voi poistaa.

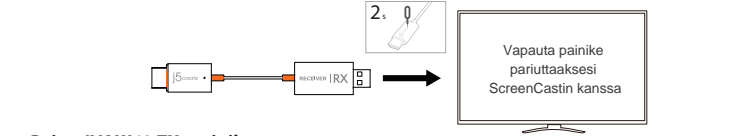
USB™ Type-A-liitin on varustettu Wi-Fi®-moduulla, antennilla ja virran syyttämiseksi: siksi EMME suosittelee USB™ Type-A-liittimen sijoittamista TV-vastaanottimen takaseinän tai sen kotelon sisään. Jos niin tehdään, seurauksena voi olla heikko signaali tai signaalin menetyk.

Teipinkäyttöohjeet:

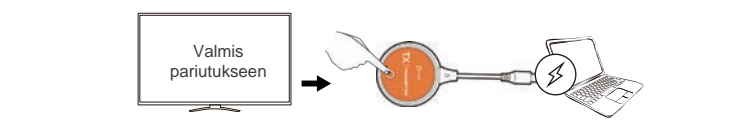


(Vianetsintä) JVAW62 TX:n parittaminen vastaanottimen kanssa

● **Kytke paritustila päälle vastaanottimen varten**
Paina nollauspainiketta (tai vie neula sisään painikkeeseen) 2 sekuntia langattomassa JVAW62-näyttövastaanottimessa. vapauta painike, kun näyttöä näkyy "vapauta painike paritustaaksesi ScreenCastin kanssa". Varmista, että vastaanotin on päivitys uusimmalla versiolle.
Katso litesesi päivitysohjeet osoitteesta <https://j5create.com/screenscast/>.



● **Paina JVAW62 TX -painiketta**
Liitä JVAW62 TX kannettavaan tai mobiililaitteeseen virran syyttämiseksi. Paina JVAW62 TX -painiketta suorittaaksesi parituksen loppuun, kun näyttöä näkyy "valmis paritukseen".



Huomautus:
Vastaanottimen nollauspainikkeella on 3 toimintoa, suoritettava toiminto on painettuna pitämisen kestun mukainen.
(1) Yksinkertainen napautus: Kytkee vastaanottimen 2,4 G / 5 GHz Wi-Fi* -tilaan.
(2) Paina 2 sekuntia: Kytke paritustila päälle JVAW62 TX:ää varten.
(3) Paina 10 sekuntia: Nollaa vastaanottimen tilanteeseen.

繁中

使用方法

● **直接连接筆電或是行動裝置**
將 JVAW62 插入筆電或是行動裝置的 USB-C* 孔。等待數秒後，JVAW62 TX 上的指示燈將會停止閃爍自動開始傳輸畫面。如果指示燈閃爍超過 20 秒，請先檢查 JVAW62 接收器是否安裝正確或是重新進行配對。
※ 請參考下方「如何配對 JVAW62 TX 與接收器」瞭解如何配對 TX 與 RX。



● **暫停或是繼續傳輸畫面**
按下 JVAW62 TX 上的按鈕可暫停或是繼續傳輸畫面。

※ **注意：**
JVAW62 TX 適用於具備 USB-C* DP** 視訊輸出功能的筆電與行動裝置，相容 Windows*、macOS*、iPadOS* 與 Android** 作業系統。

(選項) 調整 ScreenCast 的擺放位置以獲得最佳的媒體投射體驗

USB™ Type-A 端口可以使用包裝內隨附的雙面膠貼到螢幕背面。此雙面膠為可卸式，供一次使用。

因為本產品的 USB™ Type-A 端口內含 Wi-Fi 模組、訊號接收器與電源供應功能，所以我們不建議將 USB™ Type-A 裝置於電視後面或電視機內部。這樣做可能會導致裝置信號微弱或不良。