

## 1. Disassembly Procedures

**S1** Turn off the monitor.

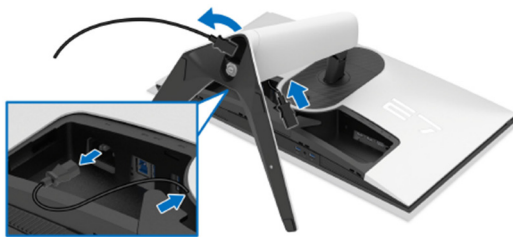
**S2** Disconnect the cables from the computer

Place the monitor on a soft cloth or cushion

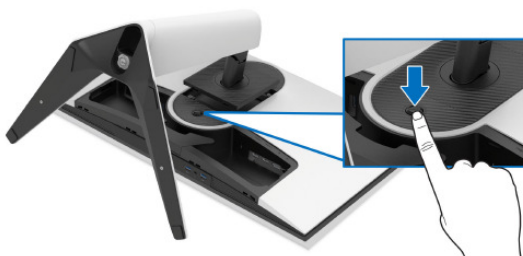
Carefully slide and remove the I/O cover from the monitor



**S3** Disconnect the cables from the monitor and slide them out through the cable-management slot on the stand riser.



**S4** Press and hold the stand release button at the back of the display



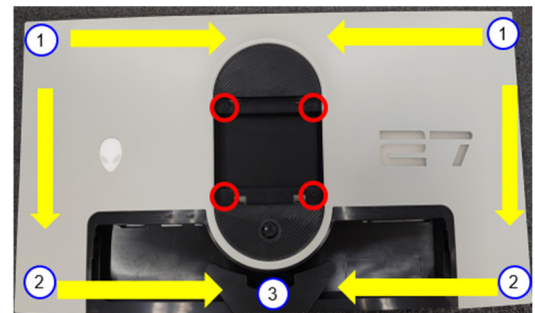
**S5** Lift the stand assembly up and away from the monitor.



**S6** Unlock 4 screws on Rear Cover

Use hands or scraper bar to disassemble "Rear Cover" from monitor

**Notice the disassembly order:**  
Top Side=>Right/ Left Side=>Bottom Side



(Screw Torque: 8-10 kgf)

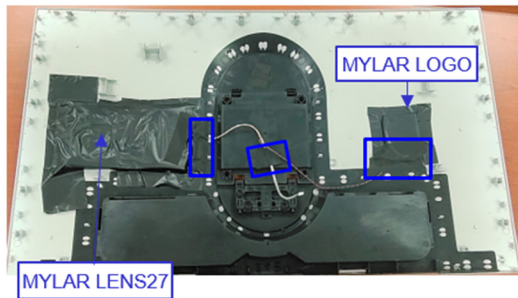
**S7** Unplug "WIRE 6P/4P/4P" from I/F BD to take off "Rear Cover "



- S8** Tear off 3 acetate tapes from "WIRE 6P/4P/4P" on Rear Cover

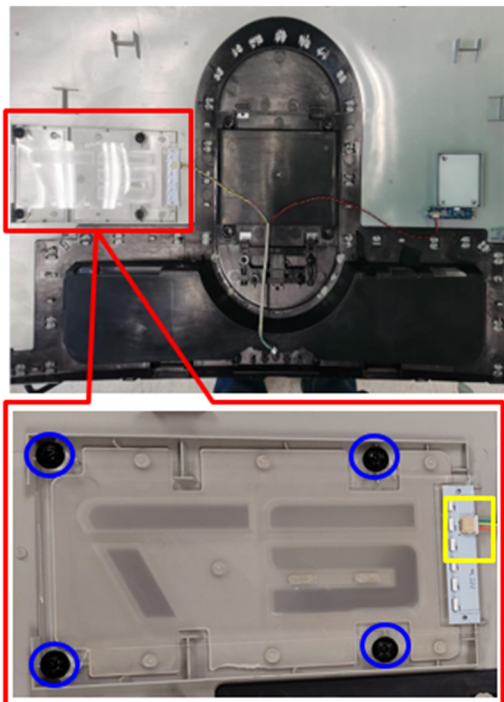
Tear off "MYLAR LENS27" from Rear Cover

Tear off "MYLAR LOGO" from Rear Cover



- S9** Unlock 4 screws on "ASSY LIGHTING"
- Disassemble "ASSY LIGHTING" from Rear Cover

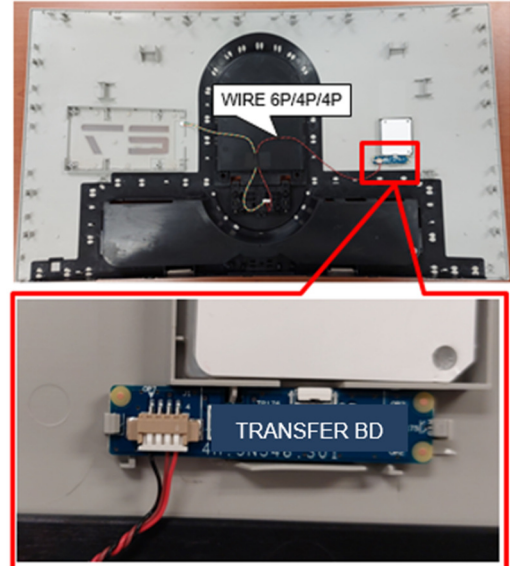
Unplug "WIRE 6P/4P/4P" from "ASSY LIGHTING"



(Screw Torque:  $4.5 \pm 0.5$  kgf)

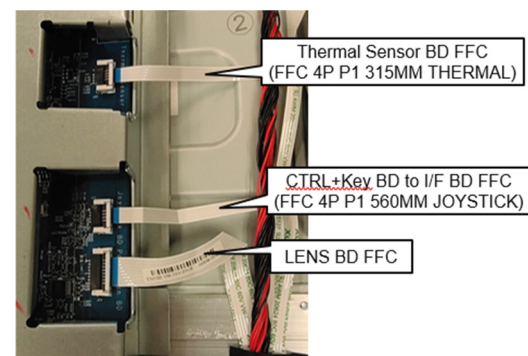
- S10** Disassemble "TRANSFER BD" from Rear Cover

Unplug "WIRE 6P/4P/4P" from "TRANSFER BD"



- S11** Unplug "LENS BD FFC" from I/F BD
- Unplug "CTRL+Key BD to I/F BD FFC" from I/F BD

Unplug "Thermal Sensor BD FFC" from I/F BD

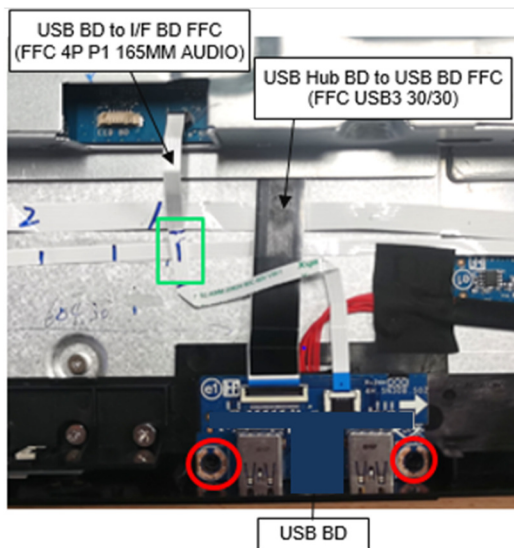


- S12** Unplug "USB BD to I/F BD FFC" from "I/F BD" and "USB BD"

Unplug "USB Hub BD to USB BD FFC" from "USB BD"

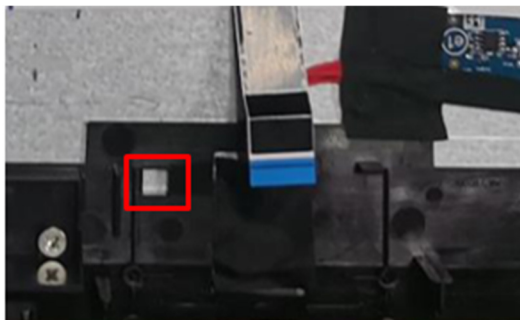
Unlock two screws to disassemble "USB BD"

Disassemble "USB BD" from Middle Frame

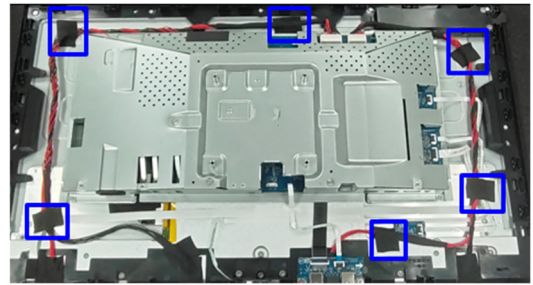


(Screw Torque: 3~4 kgf)

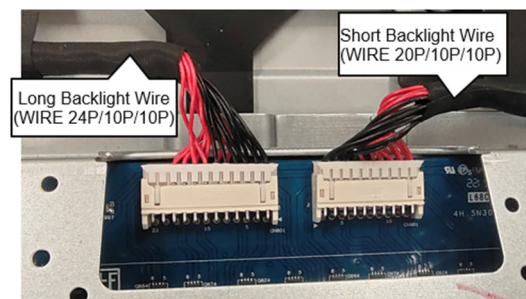
- S13** Tear off a gasket from Middle Frame



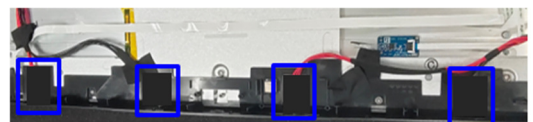
- S14** Tear off 6 acetate tapes from Backlight Wires on Panel



- S15** Unplug "Long Backlight Wire" and "Short Backlight Wire" from I/F BD



- S16** Tear off 4 acetate tapes which are for covering the connectors of backlight on Panel



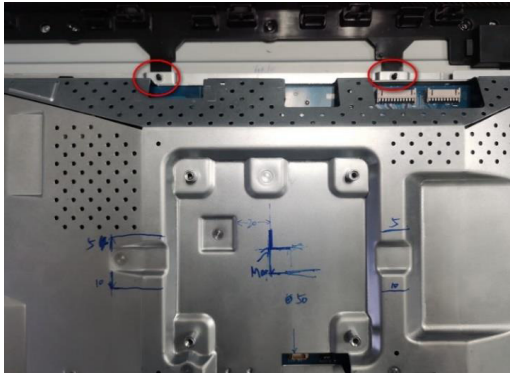
- S17** Unplug "Long Backlight Wire" and "Short Backlight Wire" from Panel



- S18** Tear off "LENS BD FFC" and "CTRL+Key BD to I/F BD FFC" from panel



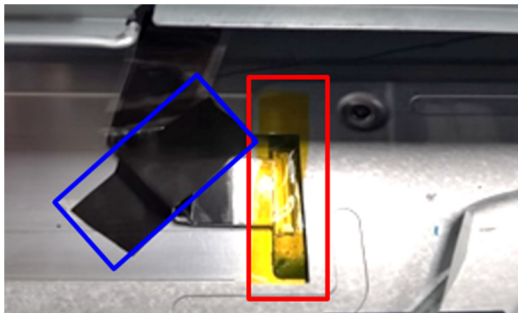
- S19** Take off Main SHD from positioning post of Middle Frame



- S20** Tear off an acetate tape and a yellow tape from "FFC EDP 60P/60P"

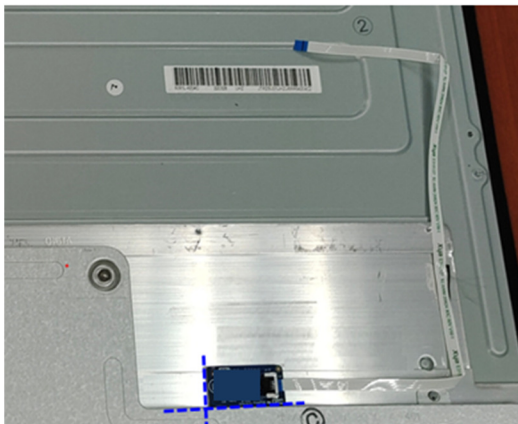
Unplug "FFC EDP 60P/60P" from panel

Take off Main SHD from Panel

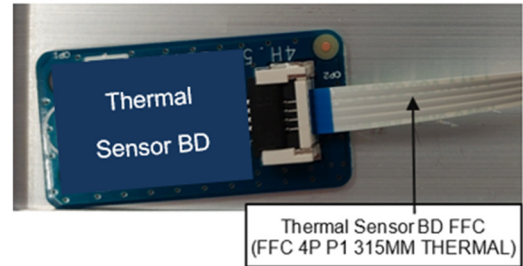


- S21** Tear off "Thermal Sensor BD FFC" from Panel

Tear off "Thermal Sensor BD" from Panel

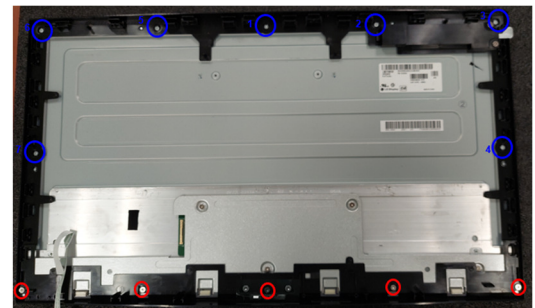


- S22** Unplug "Thermal Sensor BD FFC" from "Thermal Sensor BD"



- S23** Unlock 7 screws on the top side of Middle Frame  
(See blue marks)

Unlock 5 screws on the bottom side of Middle Frame  
(See red mark)



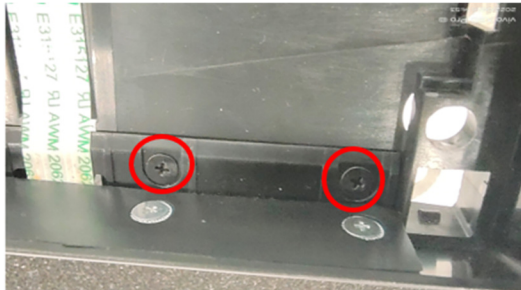
(Screw Torque-Bottom MF:  $4.0 \pm 0.5$  kgf)  
(Screw Torque-Top MF:  $7 \pm 0.5$  kgf)

- S24** Disassemble Middle Frame from panel



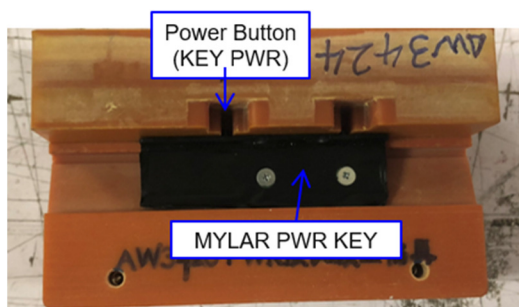
**S25** Tear off "LENS BD FFC" from Middle Frame

Unlock 2 screws and disassemble Power Button module from Middle Frame

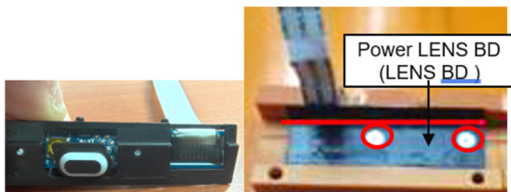


(Screw Torque: 1~1.1 Kgf)

**S26** Tear off "MYLAR PWR KEY" from "LENS BD" (Power LENS BD)

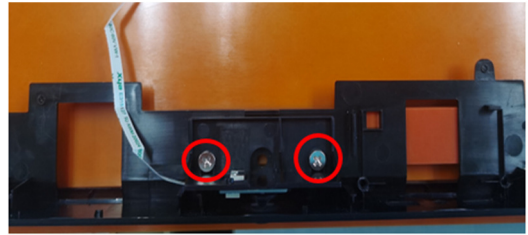


**S27** Unlock 2 screws and disassemble "LENS BD" (Power LENS BD) from Power Button



(Screw Torque: 1±0.05 Kgf)

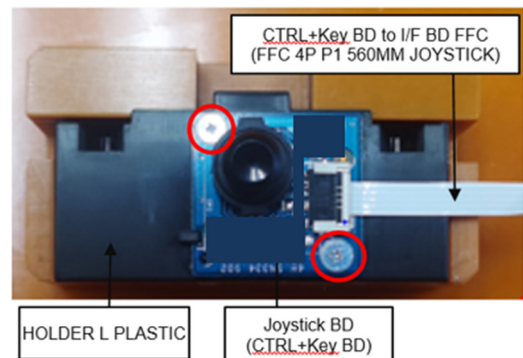
**S28** Unlock 2 screws and disassemble "HOLDER L PLASTIC" from Middle Frame



(Screw Torque: 3~4 Kgf)

**S29** Unlock 2 screws and disassemble "Control+Key BD (Joystick BD)" from "HOLDER L PLASTIC"

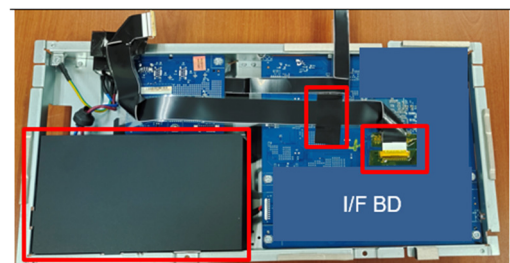
Unplug "CTRL+Key BD to I/F BD FFC" from "Control+Key BD (Joystick BD)"

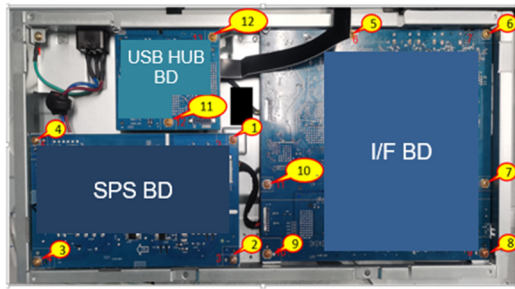


(Screw Torque: 1~1.1 Kgf)

**S30** Disassemble "MYLAR PWR-BD" from Main SHD

Tear off all tapes from "FFC EDP" on I/F BD

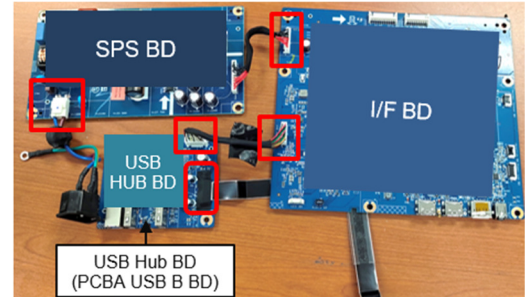
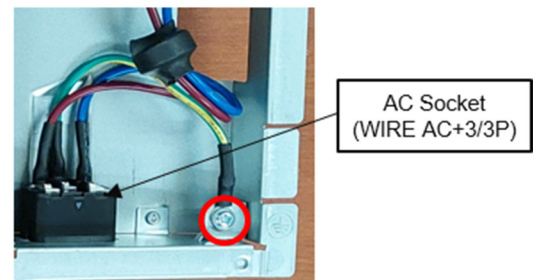


**S31** Unlock 12 PCBA screws

(Screw Torque:  $8.5 \pm 1$  Kgf)

**S32** Tear off an acetate tape from “USB Hub BD to I/F BD wire” on Main SHD**S33** Disassemble USB Hub BD, I/F BD and SPS BD from Main SHD

Unplug all cables connected between USB Hub BD, I/F BD and SPS BD

**S34** Unlock a ground screw and disassemble “WIRE AC+3/3P” from Main SHD

**S35** Remove electrolyte capacitors (red mark) from printed circuit boards



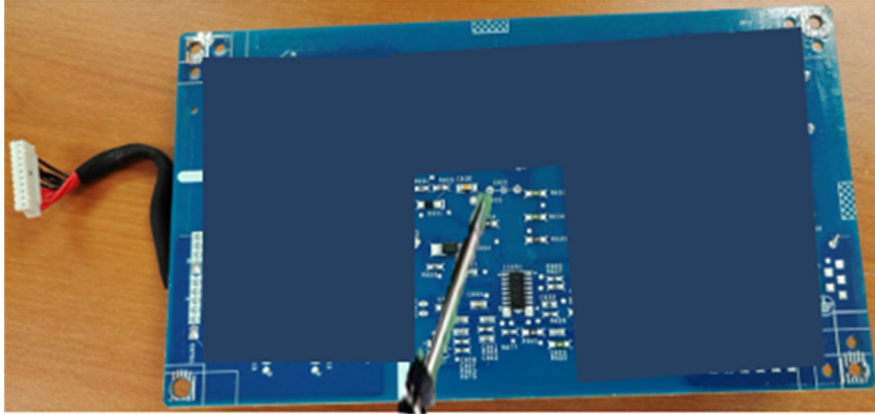
S35-1 Cut the glue between bulk cap. and PCB with a knife



S35-2 Ensure cutting path within the glue, don't touch bulk cap. or PCB



S35-3 Take out bulk cap. pin solder with soldering iron and absorber



S35-4 Lift the bulk cap. up and away from the PCB



## 2. Product material information

The following substances, preparations, or components should be disposed of or recovered separately from other WEEE in compliance with Article 4 of EU Council Directive 75/442/EEC.

Capacitors / condensers (containing PCB/PCT)	No used
Mercury containing components	No used
Batteries	No used
Printed circuit boards (with a surface greater than 10 square cm)	Product has printed circuit boards (with a surface greater than 10 square cm)
Component contain toner, ink and liquids	No used
Plastic containing BFR	No used
Component and waste contain asbestos	No used
CRT	No used
Component contain CFC, HCFC, HFC and HC	No used
Gas discharge lamps	No used
LCD display > 100 cm <sup>2</sup>	Product has an LCD greater than 100 cm <sup>2</sup>
External electric cable	Product has external cables
Component contain refractory ceramic fibers	No used
Component contain radio-active substances	No used
Electrolyte capacitors (height > 25mm, diameter > 25mm)	Product has electrolyte capacitors (height >25mm, diameter > 25mm)

## 3. Tools Required

List the type and size of the tools that would typically can be used to disassemble the product to a point where components and materials requiring selective treatment can be removed.

Tool Description:

- Screwdriver
- Scraper Bar
- Penknife
- Soldering iron and absorber