

Dell E2723H Monitor

Dell Display Manager

User's Guide

Monitor Model: E2723H
Regulatory Model: E2723Hc



 **NOTE:** A NOTE indicates important information that helps you make better use of your computer.

 **CAUTION:** A CAUTION indicates potential damage to hardware or loss of data if instructions are not followed.

 **WARNING:** A WARNING indicates a potential for property damage, personal injury, or death.

Copyright © 2022 Dell Inc. or its subsidiaries. All rights reserved. Dell, EMC, and other trademarks are trademarks of Dell Inc. or its subsidiaries. Other trademarks may be trademarks of their respective owners.

2022 – 05

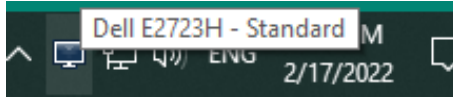
Rev. A00

Contents

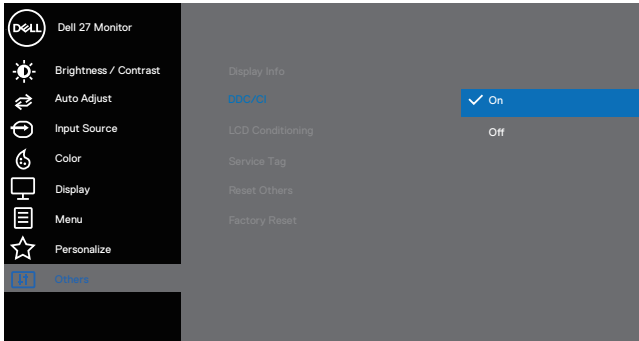
Overview	4
Selecting Quick Settings options.....	5
Setting basic display options.....	7
Assigning preset modes to applications.....	9
Organizing windows with Easy Arrange	10
Managing multiple video inputs	13
Restoring Application Positions.....	14
Attaching DDM to an active window (Windows 10 only)	16
Applying energy conservation options.....	17
Defining shortcut keys.....	18
Troubleshooting.....	19

Overview

Dell Display Manager (DDM) is an application that enables you to configure the supported Dell monitor settings such as brightness, contrast, and preset modes. After its installation, Dell Display Manager is accessible from the notification tray. Information about monitors connected to the computer is available when the mouse is pointed over the notification tray icon.



NOTE: Dell Display Manager uses Display Data Channel Command Interface (DDC/CI) channel to communicate with your monitor. Ensure that DDC/CI is enabled in the menu as shown in the following image.



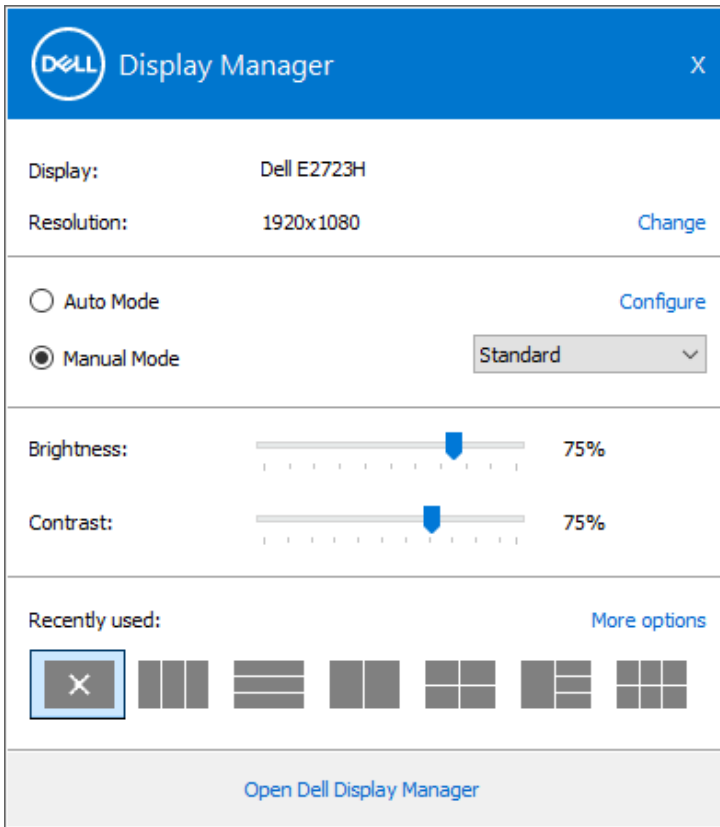
Selecting Quick Settings options

Click the Dell Display Manager's notification tray. The **Quick Settings** window is displayed.

If more than one supported Dell monitor is connected to the computer, a specific target monitor can be selected from the **Display** drop-down list.

In the **Quick Settings** window, you can also change the following:

- * Resolution
- * Auto Mode or Manual Mode the screen appearance
- * Brightness and contrast levels
- * Easy Arrange window layouts for the monitor



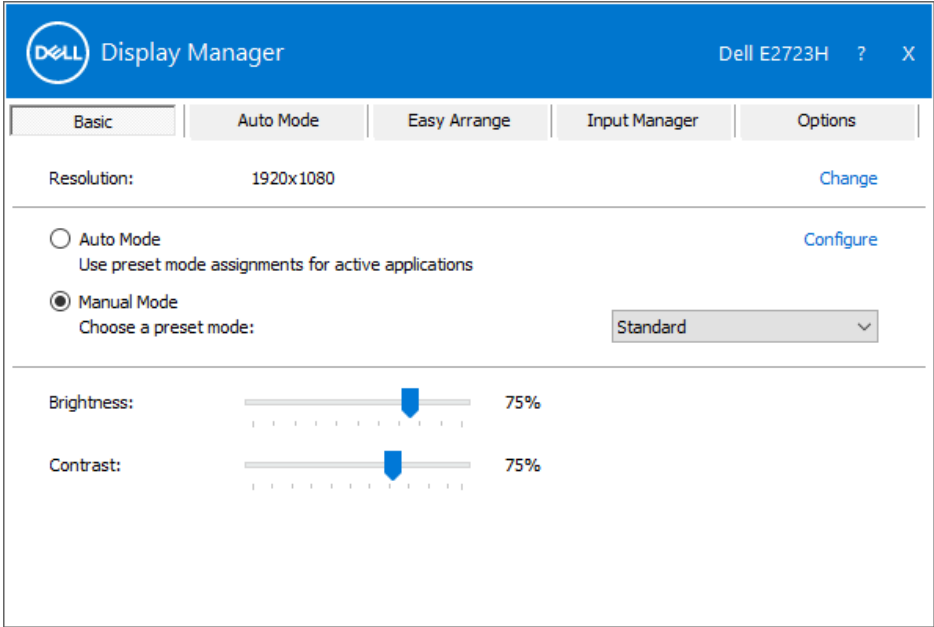
In the **Quick Settings** window, click **Open Dell Display Manager** for configuring the advanced settings.

Feature	Function	Description
Quick DDM Access	Shortcut key to open DDM user interface (UI).	Ctrl+Shift+D
	Control individual monitor in multi-monitor setup	Select the monitor from the drop-down list. Move DDM UI to the monitor to be controlled. Press Ctrl+Shift+D to open the mini UI under the mouse pointer.



Setting basic display options

Select **Manual Mode** to manually select a **Preset Mode** or select **Auto Mode** that applies a preset mode based on the active application. An on-screen message displays the current preset mode whenever it changes. The selected monitor's brightness and contrast levels can also be directly adjusted from the **Basic** tab.



NOTE: When multiple Dell monitors are connected, select “Enable display matrix control” to apply brightness, contrast, and color presets controls to all monitors.





Basic

Auto Mode

Easy Arrange

Input Manager

Options

Resolution: 1920x1080

[Change](#)

Auto Mode

Use preset mode assignments for active applications

[Configure](#)

Manual Mode

Choose a preset mode:

Standard ▾

Brightness:



75%

Contrast:



75%

Enable display matrix control



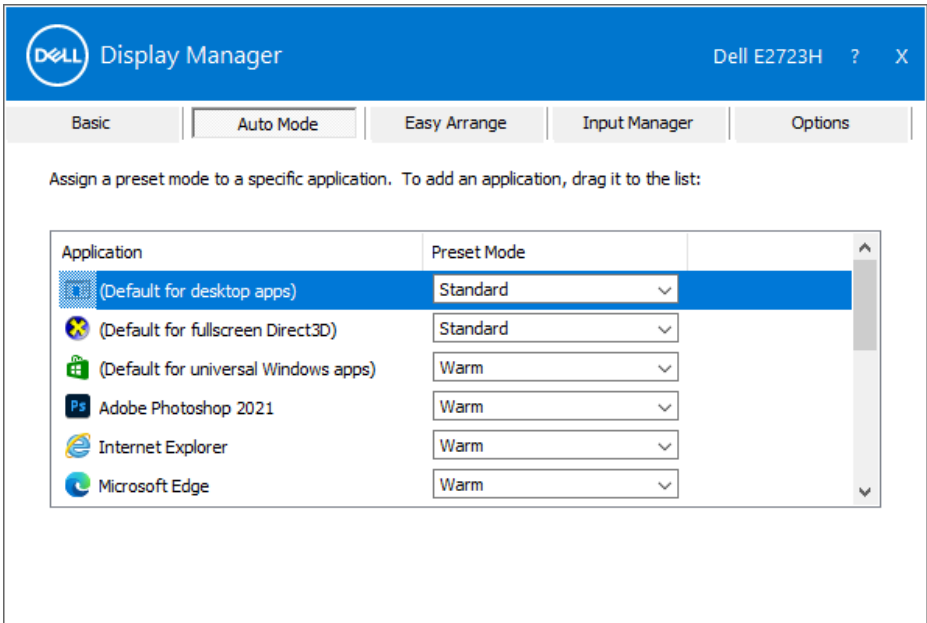
Assigning preset modes to applications

The **Auto Mode** tab enables you to associate a specific **Preset Mode** with a specific application, and apply it automatically. When **Auto Mode** is enabled, Dell Display Manager will automatically switch to the corresponding **Preset Mode** whenever the associated application is activated. The **Preset Mode** assigned to a particular application may be the same on each connected monitor, or it can vary from one monitor to the next.

Dell Display Manager is pre-configured for many popular applications. To add a new application to the **Application** list, drag the application from the desktop, Windows Start Menu, or elsewhere, and drop it onto the current list.

 **NOTE: Preset Mode assignments for batch files, scripts, loaders, and non-executable files such as zip archives or packed files, are not supported.**

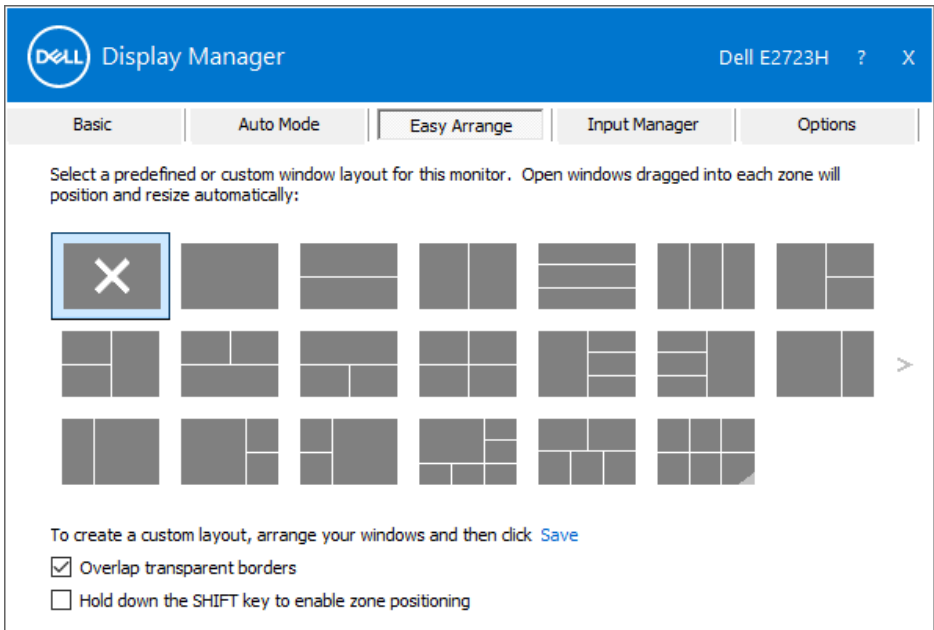
You can also configure the Game preset mode to be used whenever a Direct3D application runs in full-screen mode. To prevent an application from using mode, assign a different preset mode to it.



Organizing windows with Easy Arrange

On supported Dell monitors, the **Easy Arrange** tab enables you to easily arrange the open windows in one of the predefined layouts by dragging them in the zones. Press “>” or use Page Up/Page Down key to find more layouts. To create a custom layout, arrange the open windows, and then click **Save**.

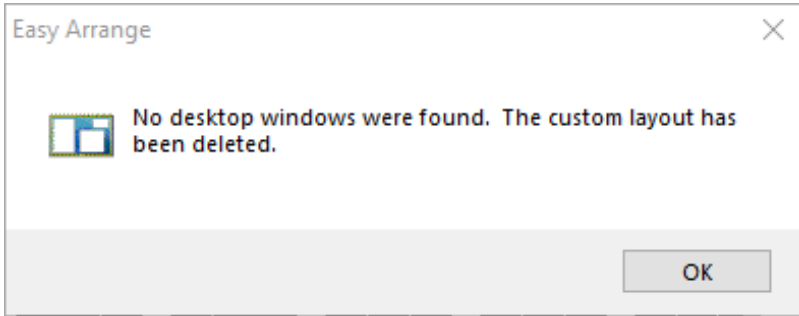
To get started with **Easy Arrange**, choose a target monitor and select one of the predefined layouts. The regions for that layout are displayed momentarily on the monitor. Next, drag an open window across the monitor. While the window is being dragged, the current window layout is displayed and an active region gets highlighted as the window passes over it. At any time, drop the window into the active region to place the window in that region.



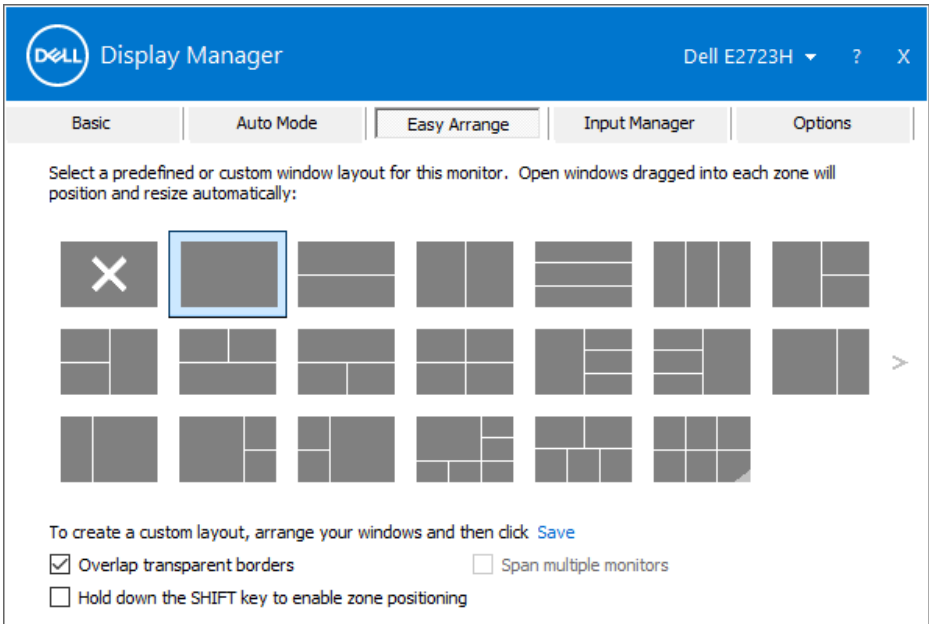
To create a custom window layout, size and position the windows on the desktop, and then click **Save** in **Easy Arrange**. The size and position of the windows is saved as a custom layout and the custom layout icon is created.

NOTE: This option does not save or remember the applications that are open. Only the size and position of the windows is saved.






To use the custom layout, select the custom layout icon. To delete the currently saved custom layout, close all windows on the desktop, and then click **Save** in **Easy Arrange**.



The following table describes the additional features of **Easy Arrange**.

Feature	Function	Description
Enhanced Easy Arrange	Custom layouts	Save and name five customized Easy Arrange patterns. Configure x*y patterns.
	Six Most Recently Used (MRU) layouts	Press Ctrl+Shift+Home to toggle between the last six MRU layouts.
	On the fly partition resizing	Press the Ctrl key while resizing the current Easy Arrange layout to adjust the size and number of cells in a layout. Newly formed Easy Arrange pattern is saved into the Easy Arrange icon position. Press the Ctrl key while clicking on a modified layout icon to restore it to the default layout.
	Easy Arrange layouts for portrait mode	Portrait mode Easy Arrange icons are displayed when monitor is rotated.

 **NOTE: An application may require a minimum effective resolution for its application window. Such application may not fit in an Easy Arrange zone if the zone is smaller than the required window size.**

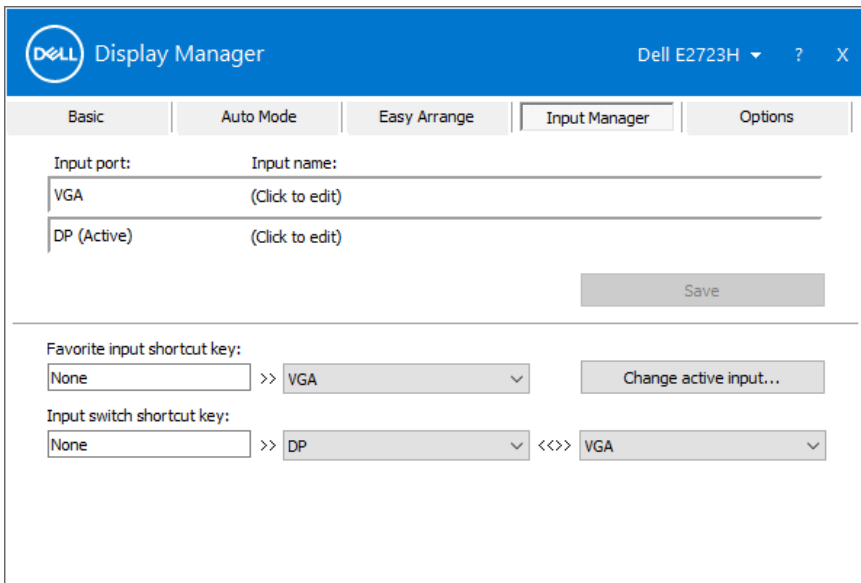


Managing multiple video inputs

The **Input Manager** tab enables you to manage multiple video inputs connected to your Dell monitor. It enables you to easily switch between inputs while you work with multiple computers.

All video input ports available on your monitor are listed. Name each input as per your requirement and save changes after editing.

You can define a shortcut key to quickly switch to your favorite input and another shortcut key to quickly switch between two inputs if you often work between them.

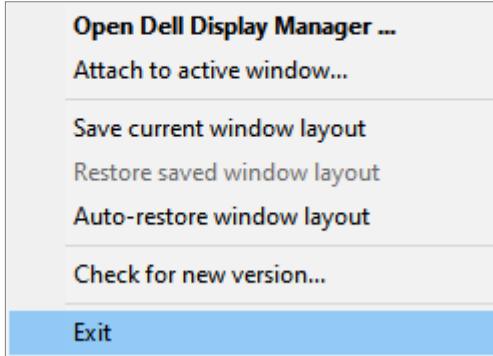


NOTE: Dell Display Manager (DDM) communicates with your monitor even when the monitor is displaying video from another computer. You can install Dell Display Manager on the computer you frequently use and control input switching from it. You can also install Dell Display Manager on other computers connected to the monitor.

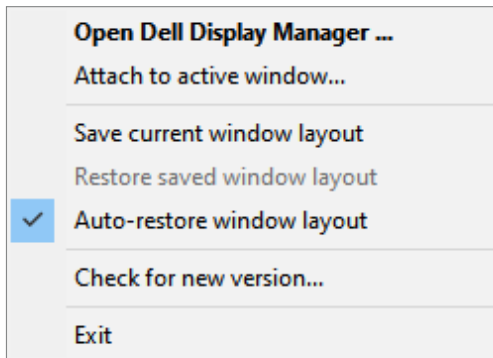


Restoring Application Positions

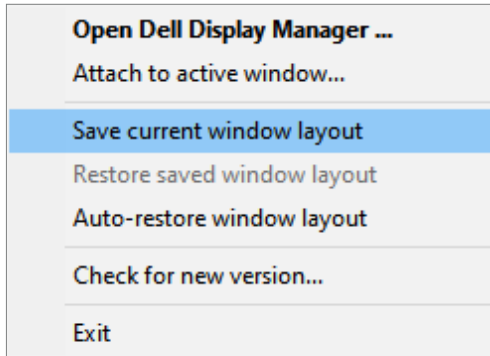
Dell Display Manager can help you restore application windows into their positions when you reconnect your computer to the monitor(s). Right-click the DDM icon on the notification tray to quickly access this feature.



If you select **Auto-restore window layout**, your application windows' positions are tracked and remembered by Dell Display Manager. Dell Display Manager automatically puts the application windows into their original positions when you reconnect your computer to your monitor(s).



To go back to a favorite layout, select **Save current window layout**, and then **Restore saved window layout**.



You can use monitors with different models or resolutions in your daily routine, and you can apply different window layouts on them. DDM recognizes the monitor you have reconnected and restores application positions accordingly. If you want to replace a monitor in a monitor matrix configuration, you can save the window layout before replacement and restore the layout after a new monitor is installed.

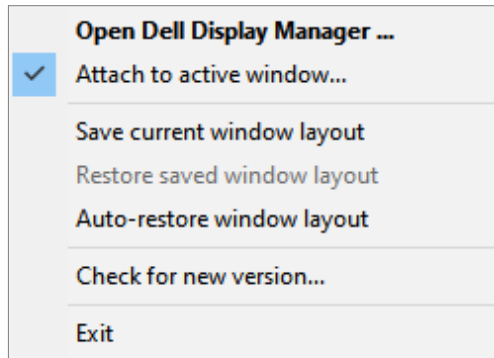
NOTE: You must keep your applications running to use this feature. DDM does not launch applications.



Attaching DDM to an active window (Windows 10 only)

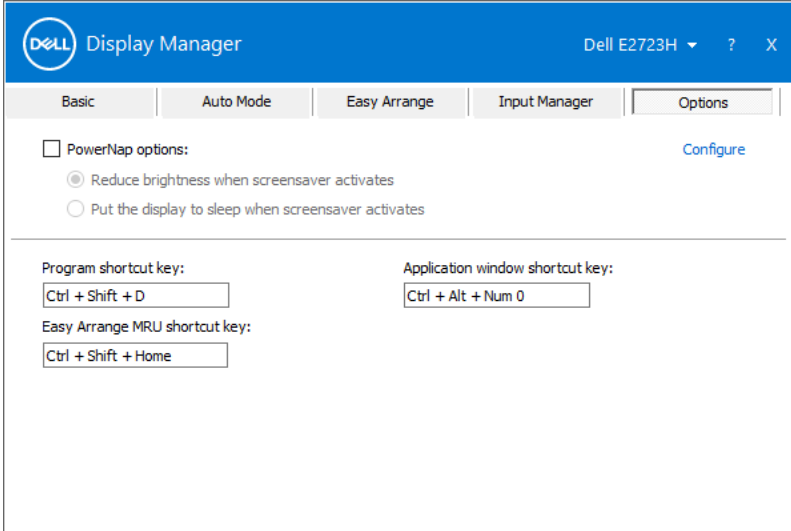
DDM icon can be attached to an active window you are working on. Click the icon for easy access to the following features.

Feature	Function	Description
Attach DDM to Active Window (Windows 10 only)	Change preset or snap to different partitions	DDM icon can be attached to an active window and you can easily switch the window position, change color preset mode, and assign auto preset mode.
	Shortcut key trigger	On a running application window, press Ctrl+Shift+Insert to trigger the attached DDM menu.
	Move app window among Easy Arrange cells	Send the app window to previous/next Easy Arrange cell.
	Move application window among monitors	Send the app window to previous/next monitor.



Applying energy conservation options

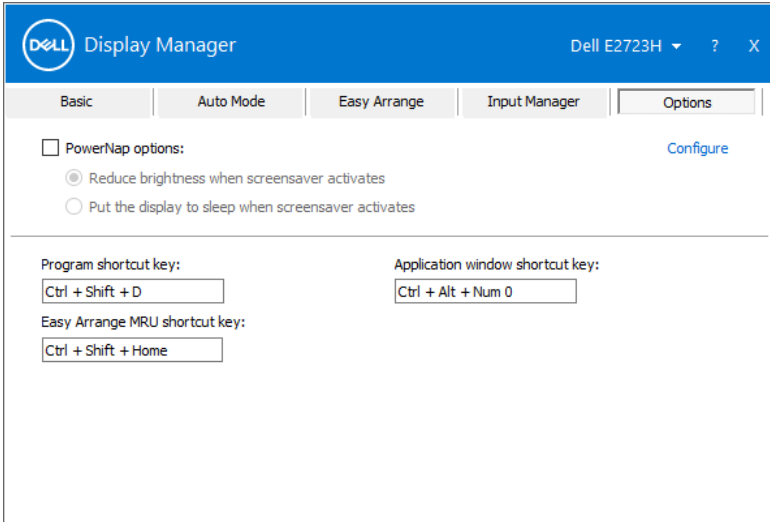
The **Options** tab on supported Dell models provide PowerNap energy conservation options. You can set the brightness to the minimum level, or put the display to sleep when the screensaver is activated.



Defining shortcut keys

You can define the shortcut keys for quick access to the following DDM functions:

- **Program shortcut key:** To quickly open the **Quick Settings** dialog box.
- **Easy Arrange MRU shortcut key:** To quickly apply the five recently used window layouts.
- **Application window shortcut key:** To launch a quick menu for options under **Auto Mode** and **Easy Arrange**.

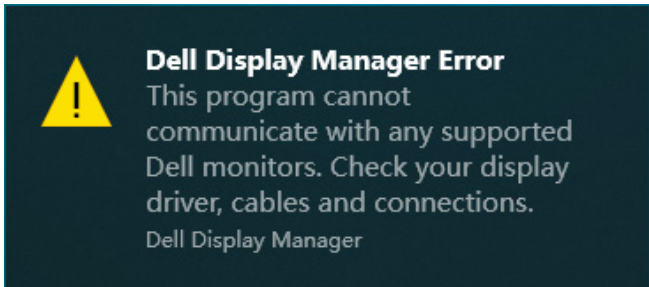


Troubleshooting

DDM works only with Dell-branded monitors. Dell Display Manager does not support monitors from any other manufacturer. If DDM does not work with your monitor, the following icon is displayed in the notification tray.



When the icon is clicked, **DDM** shows a more detailed error message.



If DDM is unable to detect and/or communicate with a supported Dell monitor, try the following troubleshooting steps:

1. Ensure the video cable is properly connected to your monitor and your computer. The connectors should be firmly inserted into position.
2. Check the monitor OSD to ensure DDC/CI is enabled.
3. Ensure that you have the correct and latest graphics-card driver from your graphic-card manufacturer such as Intel, AMD, and NVIDIA. Incompatible or old version of graphics-card driver causes DDM to fail.



4. Remove any docking stations, cable extenders, or converters between the monitor and the graphics port. Some low-cost extenders, hubs, or converters may not support DDC/CI properly and can fail DDM. Update the driver to the latest version available.
5. Restart your computer.

DDM might not work with the following monitors:

- Dell monitor models earlier than year 2013 and D-series of Dell monitors. For more information, see <https://www.dell.com/support/monitors>.
- Gaming monitors using Nvidia-based G-sync technology.
- Virtual and wireless displays do not support DDC/CI.
- Some early models of DP 1.2 monitors. It may be necessary to disable MST/DP 1.2 using the display OSD.

If your computer is connected to the Internet, you are prompted to upgrade to a newer version of DDM when it is available. It is recommended to download and install the latest DDM application.

You can also check for new version by right-clicking on DDM icon while pressing and holding the Shift key.

