

PHILIPS

Play light bar double pack

Hue White and color
ambiance

Double pack

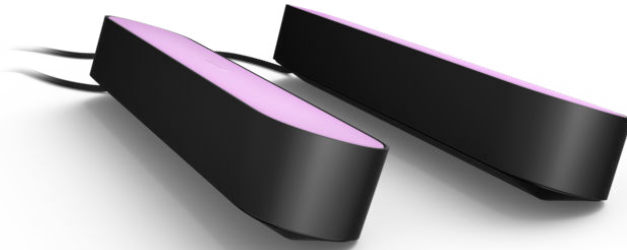
LED integrated

Black

Smart control with Hue bridge*



8719514475342



Compact design

Create a wash of colorful smart light with the sleek design of the Play light bar in black. This Play light bar 2-pack, which includes two light bars and a power supply that connects up to three lights, can be stood upright, laid down, or placed onto the back of your TV with the included mounts.



Full control from smart device with Hue bridge

- Full control from smart device with Hue bridge

Compact design, full light experience

- Display Hue Play your way
- Decorate with ambient smart lights
- Mount behind your TV
- Create your ambience with warm white to cool daylight
- Amp your entertainment with smart lighting
- Connect 3 Hue Play light bars with 1 plug
- Control it your way
- Display Hue Play your way
- Decorate with ambient smart lights
- Connect 3 Hue Play light bars with 1 plug

Highlights

Full control with Hue bridge



Connect your Philips Hue lights with the bridge to unlock the endless possibilities of the system.

Display Hue Play your way



The Philips Hue Play light bar can be mounted to a wall or TV, laid flat on any surface, or stood upright. A versatile smart light, it makes the perfect accent piece for any living room, entertainment space, or media room.

Decorate with smart lights



Transform the atmosphere of your home with just the touch of a button. Use over 16 million colors and 50,000 shades of cool to warm white light to create special moments, set the mood for a party, or simply wind down for the evening.

Mount behind your TV



Mount the Philips Hue Play smart light bar behind your screen using the included clips and double-sided tape to instantly create beautiful backlighting in the color of your choice.

Create your ambience



Set the right ambience for any moment and decorate your home with warm to cool white light. Enjoy different styles throughout the year, no matter if it's the crisp white light reminding you of a spring breeze, the warm white light of a summer sun, or the ice cool daylight of winter. Connection with the Philips Hue bridge required for this functionality.

Amp your entertainment



Immerse yourself in your movie, game, or music with the magic of light. With millions of colors from which to choose and countless lighting options, you can turn any living room into a private cinema • all you need to bring is the popcorn!

Connect 3 Hue Play light bars



Hue Play won't add to a jumble of wires behind your TV or hog too many outlets • you can connect three Hue Play smart light bars to the same power supply unit, leaving you more than enough room for all your other devices.

Control it your way



Connect your Philips Hue lights with the bridge and start discovering the endless possibilities. Control your lights from your smartphone or tablet via the Philips Hue app, or add switches to your system to activate your lights. Set timers, notifications, alarms and more for the full Philips Hue experience. Philips Hue even works with Amazon Alexa, Apple HomeKit and Google Home to allow you to control your lights with your voice.

Display Hue Play your way



The Philips Hue Play light bar can be mounted to a wall or TV, laid flat on any surface, or stood upright. A versatile smart light, it makes the perfect accent piece for any living room, entertainment space, or media room.

Connect 3 Hue Play light bars



Hue Play won't add to a jumble of wires behind your TV or hog too many outlets • you can connect three Hue Play smart light bars to the same power supply unit, leaving you more than enough room for all your other devices.

Decorate with smart lights



Transform the atmosphere of your home with just the touch of a button. Use over 16 million colors and 50,000 shades of cool to warm white light to create special moments, set the mood for a party, or simply wind down for the evening.

Specifications

Design and finishing

- Color: Black
- Material: Synthetic

Durability

- Nominal lifetime: 25,000

Extra feature/accessory incl.

- Batteries included: No
- Dimmable with Hue app and switch: Yes
- LED integrated: Yes
- Power adapter included: Yes
- UK-plug included: Yes

Miscellaneous

- Especially designed for: Living- & Bedroom
- Style: Modern
- Type: Light Bar
- EyeComfort: Yes

Product dimensions and weight

- Net weight: 0.710 kg
- Cable length: 2,000
- Height: 3.6 cm
- Length: 25.3 cm
- Width: 4.4 cm

Service

- Warranty: 2 year(s)

Technical specifications

- Lumen output at 4000K: 500 lm
- Light source equivalent to traditional bulb of: 42 W
- Total lumen output fixture: 500 lm
- Light color: 2000-6500 Hue White Color Ambiance
- Mains power: 50-60 Hz
- Wattage bulb included: 20 W
- IP code: IP20
- Class of protection: Class III - Safe Extra Low Voltage
- Lumen output at 2700K: 490 lm

The bulb

- Communication protocol: Bluetooth, Zigbee

What's supported

- Compatible with Effects: Yes
- Philips Hue App: Android 10.0 and above, iOS 16 or later
- WiFi: Works without Wi-Fi
- Defined support period: Minimum of 48 months after introduction date
- Max. number of accessories: 12 (with Hue Bridge)

Packaging dimensions and weight

- EAN/UPC - product: 8719514475342
- Net weight: 0.77 kg
- Gross weight: 1.1 kg
- Height: 100 mm
- Length: 292 mm
- Width: 209 mm



Issue date: 2025-06-13
Version: 0.165

© 2025 Signify Holding. All rights reserved. Signify does not give any representation or warranty as to the accuracy or completeness of the information included herein and shall not be liable for any action in reliance thereon. The information presented in this document is not intended as any commercial offer and does not form part of any quotation or contract, unless otherwise agreed by Signify. Philips and the Philips Shield Emblem are registered trademarks of Koninklijke Philips N.V.

www.lighting.philips.com