



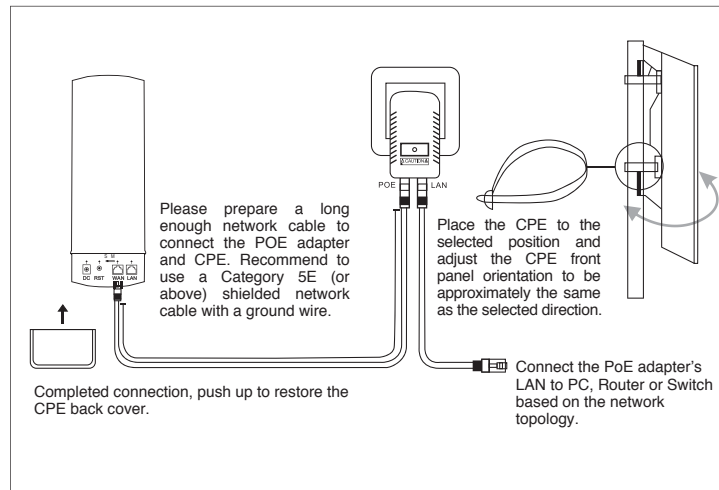
SCAN for MORE PRODUCT INFO

P/N: I-WL-CPE80 8051128108453

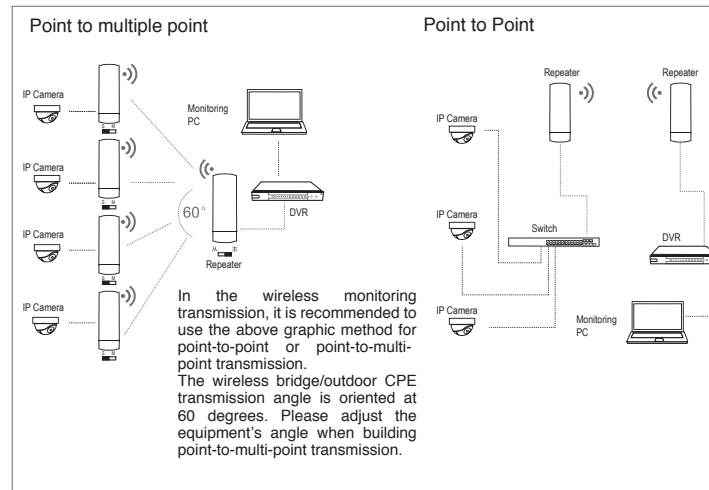
P/N: I-WL-CPE120 8051128108446 P/N: I-WL-CPE880 8051128108439

Device installation

Passive PoE Adapter supports up to 60 meters (200 feet) Power over Ethernet deployment

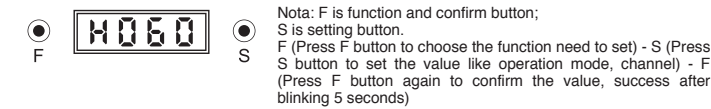


Wireless Connection Topology



LED Display CPE

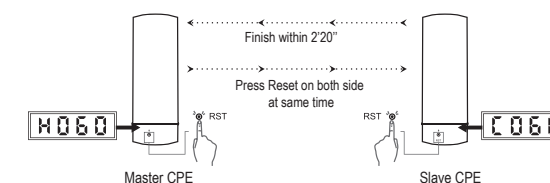
- 1. Default working mode is Slave CPE or Client, IP: 192.168.2.1.
2. Set one CPE to Master CPE or Host, in LED Display will start with "H":



- 3. Master CPE channel must be same as Slave CPE:



- 4. Press Reset 1 second on both side, the two outdoor devices will start bridging:

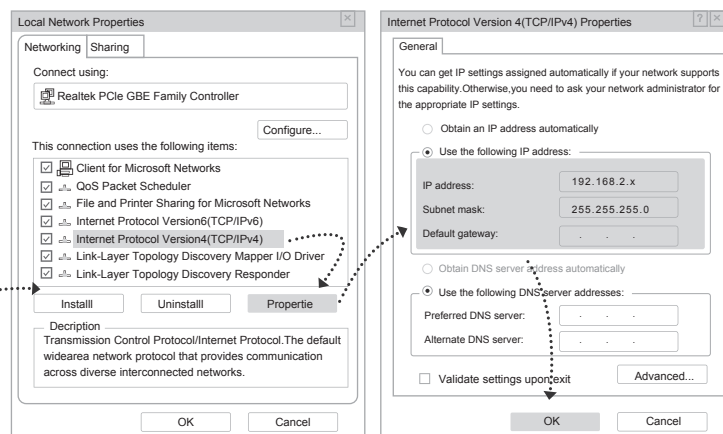
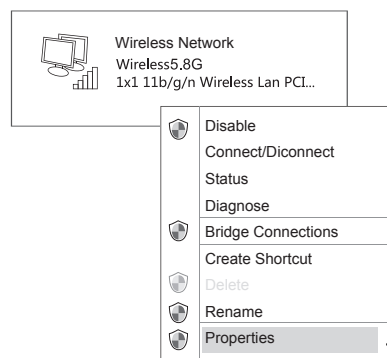


(Nota: LED Display CPE will be finished in 2 minutes 20 seconds.)

WEB Configuration

- 1. PC configuration if PC connect CPE by wireless

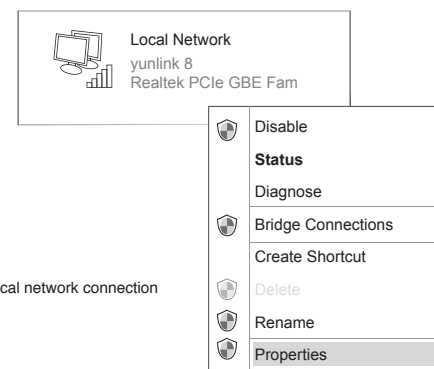
Set PC wireless network IP to 192.168.2.x (x: 2--250), same network segment as CPE, subnet mask: 255.255.255.0.



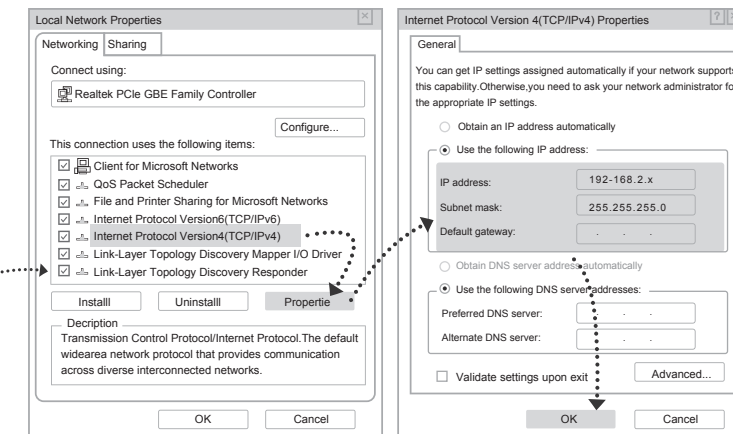
After IP address configuration, connect to CPE's wireless SSID: TECHLY5G

- 2. PC configuration if PC connect CPE wired

If connect PC and CPE wired, Set PC local network IP to 192.168.2.x (x: 2--250), same network segment as CPE, subnet mask: 255.255.255.0.



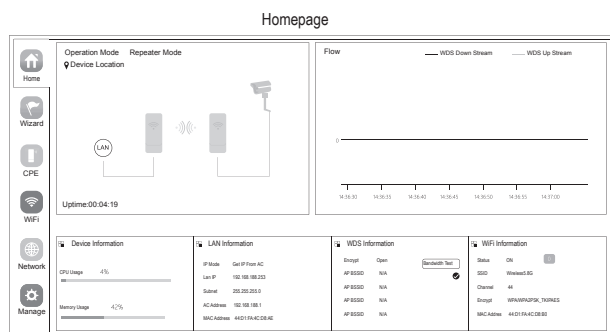
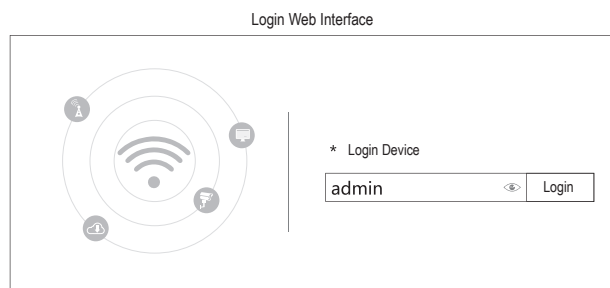
Check the local network connection



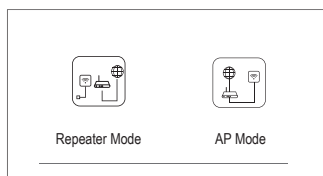
Set Static IP address for PC

3. Login Web Configuration

Use IE browser to access http://192.168.2.1, pop up the login page shown below, input the login password: admin, enter into the home page.



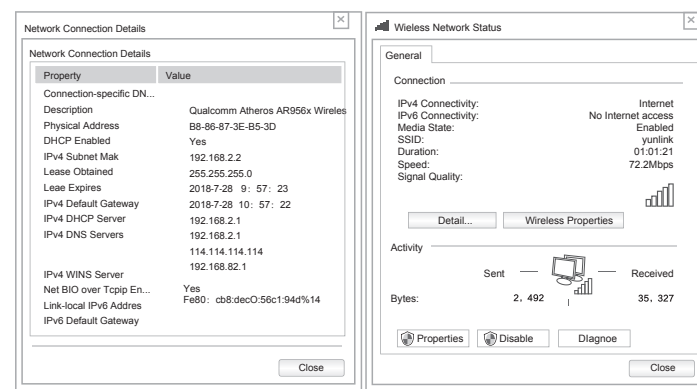
Setup Wizard



Using Setup Wizard the CPE device can be set up to Repeater and AP mode.

- Repeat mode: Bridge the exist wireless signal then transmit Wi-Fi for more range.
AP mode: In this mode, NAT, DHCP, firewall, and all WAN-related functions are turned off. All wireless and wired interfaces are bridged together, regardless of LAN and WAN.
Configuration method: According to the quickly setup wizard of each mode shown in the above figure, set the parameters and options based on user needs, click next until the setting of each step is completed.

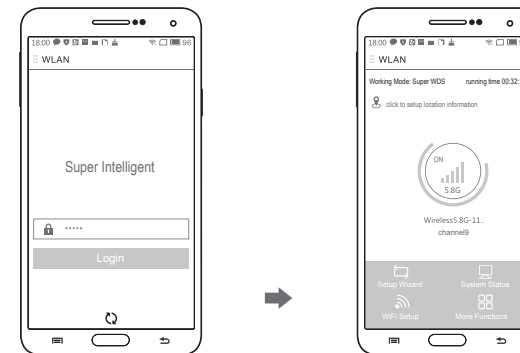
4. Configure Wireless



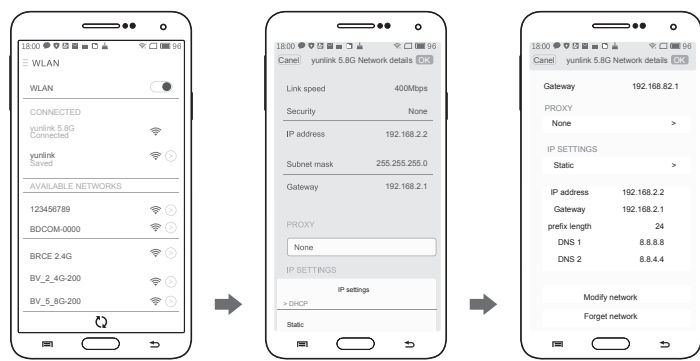
- a. Use a laptop or mobile phone to test the wireless network Internet, click on the wireless network, select the wireless SSID, input the password to test whether PC or mobile phone can be online.
b. Check the wireless network connection status, signal strength and speed, transmission and data, click network connection details to see if the IP address and DNS server address are correctly obtained, confirm device is working properly.

5. Login WEB by Mobile Phone

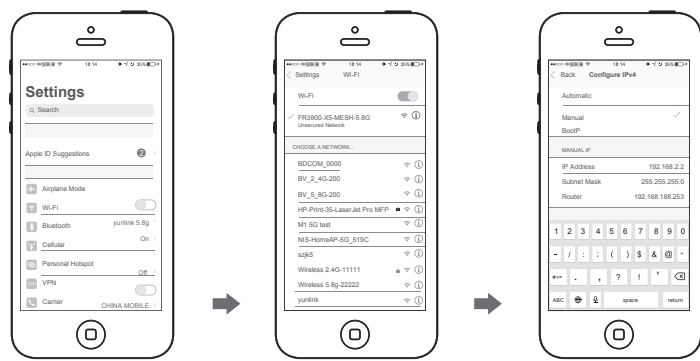
Outdoor CPE supports mobile phone Login and set, the configure page showed as follow:



- 1. Mobile phone connect with outdoor CPE, SSID:TECHLY5G
2. Configure static IP:
- Android Mobile Phone: Open settings in phone, turn on WLAN and find the SSID of the CPE, access to wireless network settings then choose "static IP" in the menu, set the mobile phone IP address as 192.168.2.x (x can not be 1) same network segment as CPE, subnet mask: 255.255.255.0, then gateway, subnet mask and domain.
- IOS Mobile Phone: Open settings and choose wi-fi connect with CPE, click exclamation mark (!), manual set IP address 192.168.2.x (x can not be 1) same network segment as CPE, subnet mask: 255.255.255.0, then gateway, subnet mask and domain.
3. Input 192.168.2.1 on the internet explorer bar, input admin to login the mobile configuration page.



1. Android system setup steps



2. IOS system setup steps

Channel Table

Wireless Bridge Regional Channel Code Instructions

Table with 3 columns: Regional Code, 5G Channel, and Channel. Lists ETSI channel codes from 100 to 140.

(Note: for the frequencies above indicated the DFS function must be activated)

Trouble shooting

Troubleshooting table with columns: Trouble, Reason, and Solution. Lists issues like Packet Latency, Wrong password, Can not login WEB, System LED light off, Low transmission Rate, and Device always Dead.

In compliance with EU Directive WEEE this product is marked with this symbol. It means that used electrical and electronic products should not be mixed with general household waste.

With the CE sign, Techly® ensures that the product is conformed to the basic European standards and directives. The full text of the EU Declaration of Conformity is available on the WWW.TECHLY.COM website in the product page.

All rights reserved. All trademarks and trade names are those of their respective owners. TECHLY® - Viale Europa 33 - 33077 Sacile (PN) - Italy