



Recycle Disassemble Instruction (Dismantled Information)

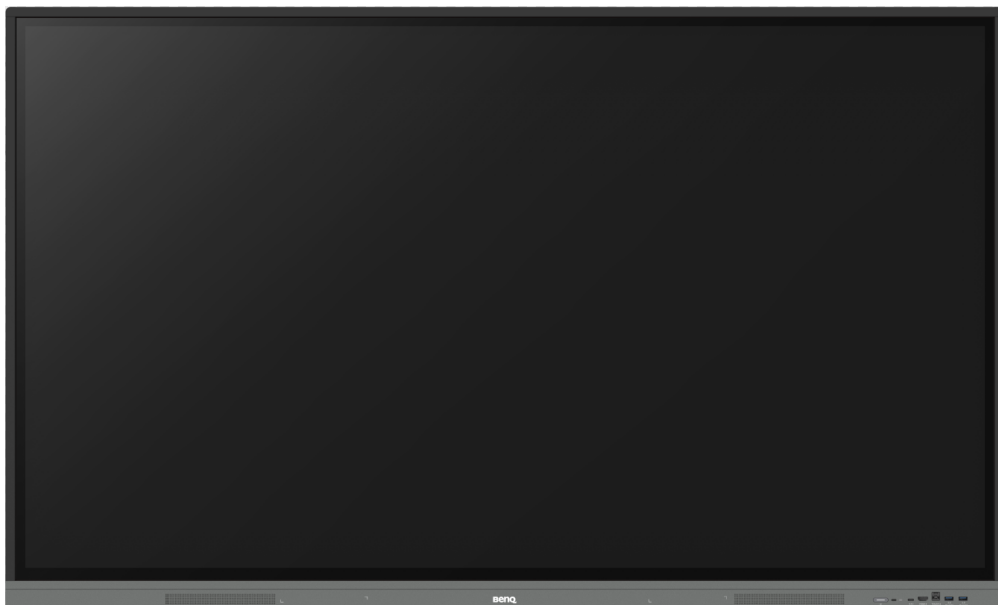
**Requirements according to ANNEX VII of DIRECTIVE 2012/19/EU
on waste electrical and electronic equipment (WEEE)**

Materials and components with hazardous content

LCDs may contain hazardous substances like Pb and BFRs which are covered by exemptions under the RoHS directive. However, the majority is present in the printed circuit boards assembly. In order to reduce emissions as much as possible, a complete disposal of the old appliance is required. This treatment may only be performed in authorized handling plants.








Product Name: Interactive flat panel

Model No.: RE7503





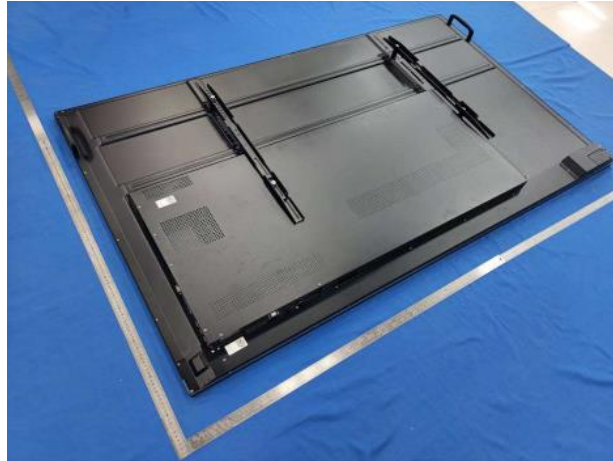
Disassembly Tools

Tool	picture
Philips Screwdriver for M3 screw	 A red-handled Philips screwdriver with a silver metal shaft and a black tip, lying horizontally on a light brown wooden surface.
nosed pliers	 A pair of red-handled nose pliers with silver metal jaws, lying horizontally on a light brown wooden surface.
Diagonal Cutting Pliers	 A pair of red-handled diagonal cutting pliers with silver metal jaws, lying horizontally on a light brown wooden surface.
Slotted screwdriver	 A green-handled slotted screwdriver with a silver metal shaft and a black tip, lying horizontally on a light brown wooden surface.
Six Point Sockets	 A yellow-handled six-point socket screwdriver with a silver metal shaft and a black tip, lying horizontally on a light brown wooden surface.
Philips Screwdriver for M2.5 screw	 A red-handled Philips screwdriver with a silver metal shaft and a black tip, lying horizontally on a light brown wooden surface.
knife	 A silver metal folding knife with a black handle, lying horizontally on a light brown wooden surface.



Disassembly process

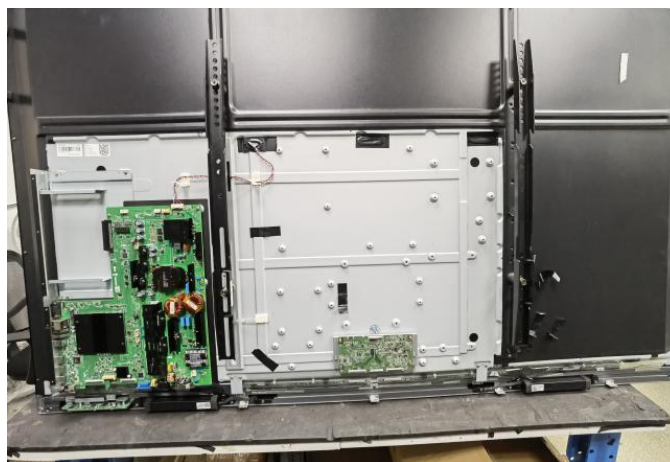
- 1、 Remove the rear shell and frame fixing screws with an electric screwdriver.
- 2、 Take down the hand screws at the corners in screwdriver, and take down the corners;
- 3、 Remove the large and small rear shells.



- 1 、 Use electric screwdriver to remove all board fixing screws
- 2 、 Remove the board.



1. Remove the wire from the board interface by hand.
2. Tear off the acetic acid adhesive tape for thread trimming by hand, open the adjustable wire fixing seat, and unscrew the adhesive thread binding ring.





1. Remove all wires.

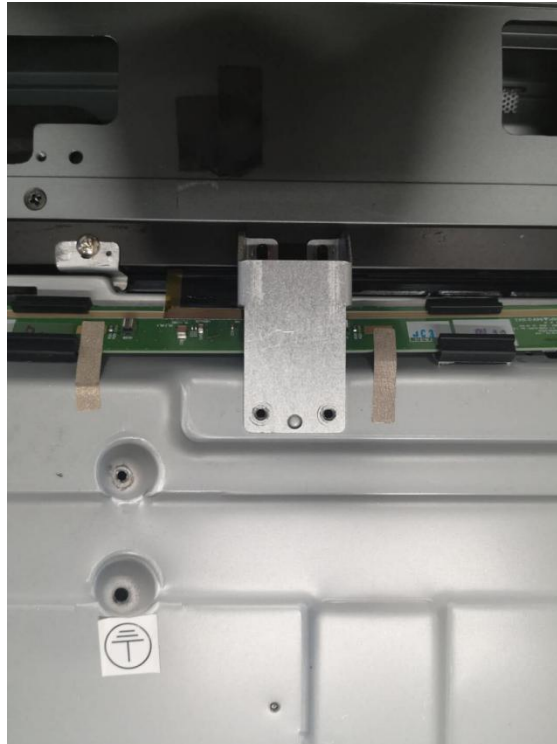
2. Use the electric screwdriver to fix the screws of the sheet metal parts on the back plate, and remove the sheet metal parts.

3. Remove the integrated screen.



1、 Use an electric screwdriver to remove the fixing screw of the glass pressing block and remove the glass pressing block.

2、 Remove the tempered glass.





1、 Use the electric screwdriver to remove the fixing screws at 4 corners.

2、 Disconnect the connection interface of the touch frame.

3、 Remove the corner and disconnect the connections between the profiles.

4、 Remove the touch frame from the profile.



Disassembly Time

Total time: about 60 minutes