

Philips Monitor
UltraWide LCD monitor

E Line

34" (86.36 cm)
3440 x 1440 (WQHD)

345E2AE



Experience true colour, unconstrained visuals

The Philips E line UltraWide display gives an expansive panoramic visual. A CrystalClear WQHD display, Ultra Wide-Color and ergonomic stand design make for optimal viewing conditions. MultiView meets the need for usability and productivity.

Superb Picture Quality

- CrystalClear images with UltraWide QHD 3440 x 1440 pixels
- Ultra Wide-Color wider range of colours for a vivid picture
- IPS LED wide view technology for image and colour accuracy
- SmartContrast for rich black details

Good for Gaming

- Effortlessly smooth gameplay with AMD FreeSync™ technology
- SmartImage game mode optimised for gamers

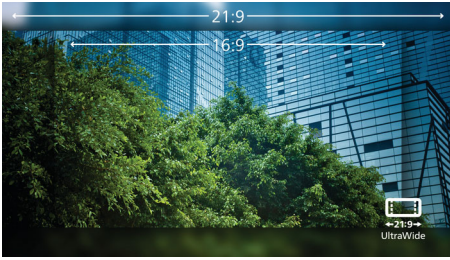
Features designed for you

- Less eye fatigue with Flicker-Free technology
- LowBlue Mode for easy-on-the-eyes productivity
- MultiView enables simultaneous dual connection and view
- Cable management reduces cable clutter for a neat workspace
- EasySelect menu toggle key for quick on-screen menu access
- Built-in stereo speakers for multimedia

PHILIPS

Highlights

UltraWide CrystalClear images



These Philips screens deliver Crystal Clear, UltraWide Quad HD 3440 x 1440 pixel images. Utilising high-performance panels with high-density pixel count and 178/178 wide viewing angles, these new displays will make your images and graphics come alive. The UltraWide 21:9 format enables more productivity with more room for side-by-side comparisons and more viewable spreadsheet columns. Whether you are a demanding professional requiring extremely detailed information for CAD-CAM solutions or a financial wizard working on huge spreadsheets, Philips displays deliver Crystal Clear images.

Ultra Wide-Color Technology



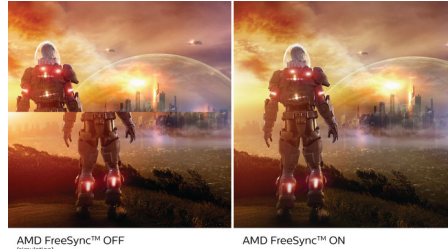
Ultra Wide-Color Technology delivers a wider spectrum of colours for a more brilliant picture. The Ultra Wide-Color wider "colour gamut" produces more natural-looking greens, vivid reds and deeper blues. Bring media entertainment, images and even productivity more alive with vivid colours from Ultra Wide-Color Technology.

MultiView technology

With the ultra-high resolution Philips MultiView display, you can now experience a world of connectivity. MultiView enables active

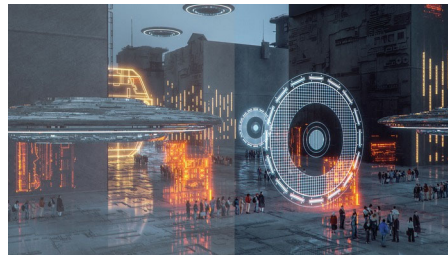
dual connect and view so that you can work with multiple devices like a PC and notebook simultaneously, for complex multitasking.

Ultra-smooth gaming



Gaming shouldn't be a choice between choppy gameplay or broken frames. With the new Philips monitor it doesn't have to be. Get fluid, artefact-free performance at virtually any frame rate with AMD FreeSync™ technology, smooth, quick refresh and ultra-fast response time.

SmartImage Game mode



The new Philips gaming display has quick-access OSD fine-tuned for gamers, offering you multiple options. "FPS" mode (First person shooting) improves dark themes in games, allowing you to see hidden objects in dark areas. "Racing" mode adapts the display with the fastest response time and high colour, along with image adjustments. "RTS" mode (Real-time strategy) has a special SmartFrame mode that enables highlighting of specific area and allows for size and image adjustments. Gamer 1 and Gamer 2 enable you to save personal customised settings based on different games, ensuring best performance.

Flicker-Free technology



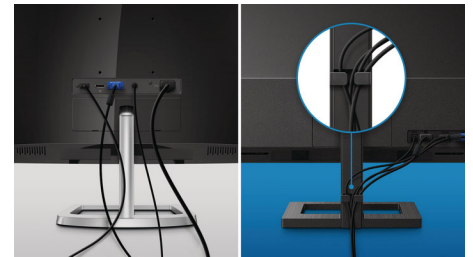
Due to the way brightness is controlled on LED-backlit screens, some users experience flicker on their screen which causes eye fatigue. Philips Flicker-Free technology applies a new solution to regulate brightness and reduce flicker for more comfortable viewing.

LowBlue Mode



Studies have shown that just as ultra-violet rays can cause eye damage, shortwave-length blue light rays from LED displays can cause eye damage and affect vision over time. Developed for wellbeing, the Philips LowBlue Mode setting uses a smart software technology to reduce harmful shortwave blue light.

Cable management



Cable management is an intimate design that maintains a tidy workspace by organising the cables and wires required for the operation of a display device.



WQHD



Ultra Wide Color



UltraWide



AMD FreeSync



SmartImage™ Game



Flicker-free



LowBlue Mode



MultiView



EasySelect



Built-in Speaker

Specifications

Picture/Display

- LCD panel type: IPS technology
- Backlight type: W-LED system
- Panel Size: 34 inch / 86.36 cm
- Display Screen Coating: Anti-Glare, 3H, Haze 25%
- Effective viewing area: 799.8 (H) x 334.8 (V) mm
- Aspect ratio: 21:9
- Maximum resolution: 3440 x 1440 @ 75 Hz*
- Pixel Density: 119.68 PPI
- Response time (typical): 4 ms (Grey to Grey)*
- Brightness (max.): 300* cd/m²
- Contrast ratio (typical): 1000:1
- SmartContrast: Mega Infinity DCR
- Pixel pitch: 0.2325 x 0.2325 mm
- Viewing angle: 178° (H)/178° (V), @ C/R > 10
- Flicker-free
- Picture enhancement: SmartImage game
- Colour gamut (typical): NTSC 106.8%*, sRGB 120.3%*
- Display colours: 16.7 M
- Scanning Frequency: 30–120 kHz (H)/48–75 Hz (V)
- LowBlue Mode
- EasyRead
- sRGB
- AMD FreeSync™ technology

Connectivity

- Signal Input: DisplayPort x 1, HDMI x 2
- Sync Input: Separate Sync
- Audio (In/Out): PC audio-in, Headphone out

Convenience

- Built-in Speakers: 3 W x 2
- MultiView: PIP/PBP mode, 2 x devices
- User convenience: Power On/Off, Menu, Volume, Input, SmartImage Game
- OSD Languages: Brazil Portuguese, Czech, Dutch, English, Finnish, French, German, Greek, Hungarian, Italian, Japanese, Korean, Polish, Portuguese, Russian, Simplified Chinese, Spanish, Swedish, Traditional Chinese, Turkish, Ukrainian
- Other convenience: Kensington lock, VESA mount (100 x 100 mm)
- Plug and Play Compatibility: DDC/CI, Mac OS X, sRGB, Windows 10 / 8.1 / 8 / 7

Stand

- Height adjustment: 100 mm
- Tilt: -5/20 degree

Power

- On mode: 26.09 W (typ.) (EnergyStar test method)
- Standby mode: 0.5 W
- Off mode: 0.3 W
- Energy Label Class: G
- Power LED indicator: Operation - White, Standby mode - White (flashing)
- Power supply: External, 100–240 VAC, 50–60 Hz

Dimensions

- Product with stand (max height): 817 x 491 x 235 mm
- Product without stand (mm): 817 x 365 x 49 mm
- Packaging in mm (W x H x D): 930 x 525 x 186 mm

Weight

- Product with stand (kg): 7.61 kg
- Product without stand (kg): 5.65 kg
- Product with packaging (kg): 10.23 kg

Operating conditions

- Temperature range (operation): 0 to 40 °C
- Temperature range (storage): -20 to 60 °C
- Relative humidity: 20%-80 %
- Altitude: Operation: +12,000 ft (3658 m), Non-operation: +40,000 ft (12,192 m)
- MTBF: 50,000 hrs (excluding backlight) hour(s)

Sustainability

- Environmental and energy: EnergyStar 8.0, TCO Certified, RoHS
- Recyclable packaging material: 100 %
- Specific Substances: Mercury free, PVC/BFR free housing

Compliance and standards

- Regulatory Approvals: CB, TUV/ISO9241-307, TUV-BAUART, CU-EAC, EAEU RoHS, MEPS, PSB, BSMI, CE Mark

Cabinet

- Colour: Black
- Finish: Textured

What's in the box?

- Monitor with stand
- Cables: DP cable, HDMI cable, Power cable
- User Documentation



Issue date 2022-06-29

Version: 7.3.2

12 NC: 8670 001 67746
EAN: 87 12581 76758 7

© 2022 Koninklijke Philips N.V.
All Rights reserved.

Specifications are subject to change without notice.
Trademarks are the property of Koninklijke Philips N.V.
or their respective owners.

www.philips.com

* "IPS" word mark / trademark and related patents on technologies belong to their respective owners.
* The maximum resolution works for either HDMI input or DP input.
* Response time value equal to SmartResponse
* It's the maximum archivable figure.
* NTSC Area based on CIE 1976
* sRGB Area based on CIE1931
* 2020 Advanced Micro Devices, Inc. All rights reserved. AMD, the AMD Arrow logo, AMD FreeSync™ and combinations thereof are trademarks of Advanced Micro Devices, Inc. Other product names used in this publication are for identification purposes only and may be trademarks of their respective companies.
* The monitor may look different from feature images.