



Philips
LCD monitor with
PowerSensor

B Line

32 (31.5"/80 cm diag.)
2560 x 1440 (QHD)

325B1L

Crystal-clear vision to get more done

Get your best work done with this Philips monitor. Crystal-clear QHD gives the space and clarity for your work. Loaded with features to improve productivity and sustainability.

Designed for sustainability

- PowerSensor saves up to 80% energy costs
- LightSensor for the perfect brightness with minimal power
- Designed to meet environmental standards

Excellent performance

- Crystal clear images with Quad HD 2560 x 1440 pixels
- IPS technology for full colours and wide viewing angles
- SmartImage pre-sets for easy optimised image settings

Designed for the way you work

- Less eye fatigue with Flicker-Free technology
- LowBlue Mode for easy-on-the-eyes productivity
- EasyRead mode for a paper-like reading experience
- SmartErgoBase enables user-friendly ergonomic adjustments
- Built-in stereo speakers for multimedia

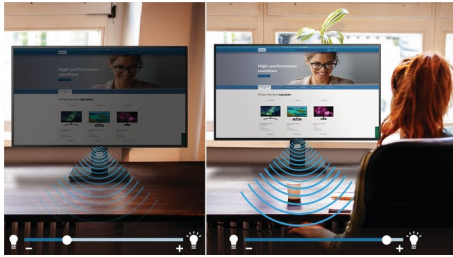
PHILIPS

LCD monitor with PowerSensor
B Line 32 (31.5"/80 cm diag.), 2560 x 1440 (QHD)

325B1L/01

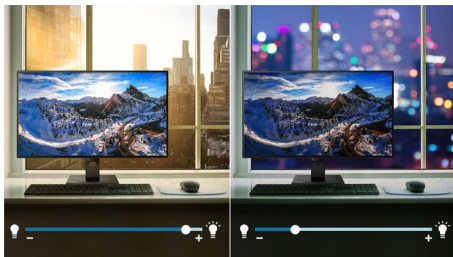
Highlights

PowerSensor



PowerSensor is a built-in 'people sensor' that transmits and receives harmless infrared signals to determine if the user is present and then automatically reduces monitor brightness when the user steps away from the desk, cutting energy costs by up to 80 percent and prolonging monitor life

LightSensor



LightSensor uses a smart sensor to adjust the picture brightness depending on the light conditions in the room for the perfect picture with minimal power usage.

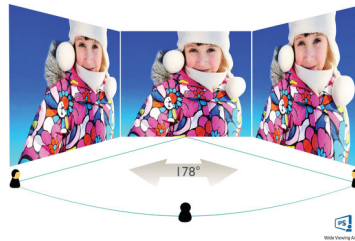
CrystalClear images



These Philips screens deliver Crystal Clear, Quad HD 2560 x 1440 or 2560 x 1080 pixel images. Utilising high-performance panels with high-density pixel count, enabled by high-bandwidth sources like Displayport, HDMI and Dual link DVI, these new displays will make your images and graphics come alive. Whether

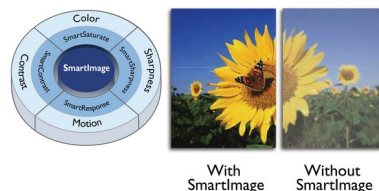
you are a demanding professional requiring extremely detailed information for CAD-CAM solutions, a user of 3D graphic applications or a financial wizard working on huge spreadsheets, Philips displays will give you Crystal Clear images.

IPS technology



IPS displays use advanced technology that gives you extra-wide viewing angles of 178/178 degrees, making it possible to view the display from almost any angle — even in 90-degree Pivot mode! Unlike standard TN panels, IPS displays give you remarkably crisp images with vivid colours, making it ideal not only for Photos, films and web browsing, but also for professional applications that demand colour accuracy and consistent brightness at all times.

SmartImage



SmartImage is an exclusive leading edge Philips technology that analyses the content displayed on your screen and optimises your display performance. This user-friendly interface allows you to select various modes, like Office, Photo, Movie, Game, Economy etc., to fit the application in use. Based on the selection, SmartImage dynamically optimises the contrast, colour saturation and sharpness of images and videos for ultimate display performance. The Economy mode option

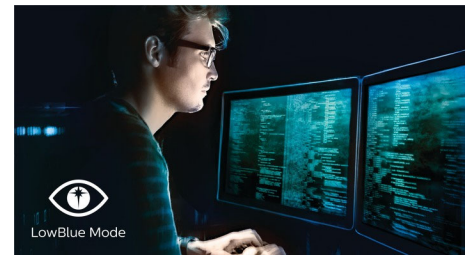
offers you major power savings. All in real time at the touch of a single button!

Flicker-Free technology



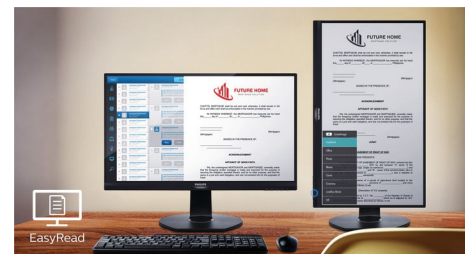
Due to the way brightness is controlled on LED-backlit screens, some users experience flicker on their screen which causes eye fatigue. Philips Flicker-Free technology applies a new solution to regulate brightness and reduce flicker for more comfortable viewing.

LowBlue Mode



Studies have shown that just as ultra-violet rays can cause eye damage, shortwave-length blue light rays from LED displays can cause eye damage and affect vision over time. Developed for wellbeing, the Philips LowBlue Mode setting uses a smart software technology to reduce harmful shortwave blue light.

EasyRead mode



EasyRead mode for a paper-like reading experience



Specifications

Picture/Display

- LCD panel type: IPS technology
- Adaptive sync
- Backlight type: W-LED system
- Panel Size: 31.5 inch/80 cm
- Display Screen Coating: Anti-Glare, 3H, Haze 25%
- Effective viewing area: 698.112 (H) x 392.688 (V)
- Aspect ratio: 16:9
- Maximum resolution: 2560 x 1440 @ 75 Hz*
- Pixel Density: 93 PPI
- Response time (typical): 4 ms (Grey to Grey)*
- Brightness: 250 cd/m²
- Contrast ratio (typical): 1200:1
- SmartContrast: 50,000,000:1
- Pixel pitch: 0.2727 x 0.2727 mm
- Viewing angle: 178° (H)/178° (V), @ C/R > 10
- Flicker-free
- Picture enhancement: SmartImage
- Display colours: Colour support 1.07 billion colours
- Colour gamut (typical): NTSC 89%*, sRGB 101.7%*, Adobe RGB 88%*
- Scanning Frequency: 30–114 kHz (H)/48–75 Hz (V)
- sRGB
- EasyRead
- LowBlue Mode

Connectivity

- Signal Input: DisplayPort 1.2, HDMI 1.4 x 2
- HDCP: HDCP 1.4 (DP/HDMI)
- USB: USB-B x 1 (upstream), USB 3.2 x 4 (downstream with 1 fast charge B.C 1.2)
- Audio (In/Out): Audio out
- Sync Input: Separate Sync

Convenience

- Built-in Speakers: 3 W x 2
- User convenience: SmartImage, Input, PowerSensor, Menu, Power On/Off
- Control software: SmartControl
- OSD Languages: Brazil Portuguese, Czech, Dutch, English, Finnish, French, German, Greek, Hungarian, Italian, Japanese, Korean, Polish, Portuguese, Russian, Simplified Chinese, Spanish, Swedish, Traditional Chinese, Turkish, Ukrainian
- Other convenience: Kensington lock, VESA mount (100 x 100 mm)
- Plug and Play Compatibility: DDC/CI, Mac OS X, sRGB, Windows 10 / 8.1 / 8 / 7

Stand

- Height adjustment: 180 mm
- Pivot: +/- 90 degree

- Swivel: +/- 180 degree
- Tilt: -5~30 degree

Power

- ECO mode: 21.3 W (typ.)
- On mode: 40.3 W (typ.)
- Standby mode: 0.3 W
- Off mode: Zero watts with Zero switch
- Energy Label Class: G
- Power LED indicator: Operation - White, Standby mode - White (flashing)
- Power supply: Built-in, 100–240 VAC, 50–60 Hz

Dimensions

- Product with stand (max height): 730 x 620 x 250 mm
- Product without stand (mm): 730 x 433 x 60 mm
- Packaging in mm (W x H x D): 930 x 563 x 186 mm

Weight

- Product with stand (kg): 10.70 kg
- Product without stand (kg): 6.93 kg
- Product with packaging (kg): 13.60 kg

Operating conditions

- Temperature range (operation): 0°C to 40°C °C
- Temperature range (storage): -20°C to 60°C °C
- Relative humidity: 20%-80 %
- Altitude: Operation: +12,000 ft (3658 m), Non-operation: +40,000 ft (12,192 m)
- MTBF (demonstrated): 70,000 hrs (excluded backlight)

Sustainability

- Environmental and energy: PowerSensor, LightSensor, RoHS
- Recyclable packaging material: 100 %
- Post-consumer recycled plastic: 85%
- Specific Substances: PVC/BFR free housing, Mercury free

Compliance and standards

- Regulatory Approvals: CB, TUV/GS, TUV Ergo, SEMKO, CU-EAC, EAEU RoHS, CE Mark

Cabinet

- Front bezel: Black
- Rear cover: Black
- Foot: Black
- Finish: Texture

What's in the box?

- Monitor with stand
- Cables: HDMI cable, DP cable, Power cable
- User Documentation



Issue date 2022-04-21

Version: 3.1.1

12 NC: 8670 001 67993
EAN: 87 12581 76812 6

© 2022 Koninklijke Philips N.V.
All Rights reserved.

Specifications are subject to change without notice.
Trademarks are the property of Koninklijke Philips N.V.
or their respective owners.

www.philips.com

* "IPS" word mark / trademark and related patents on technologies belong to their respective owners.
* The maximum resolution works for either HDMI input or DP input.
* Response time value equal to SmartResponse
* NTSC Area based on CIE 1976
* sRGB Area based on CIE1931
* Adobe RGB Coverage based on CIE 1976
* The monitor may look different from feature images.