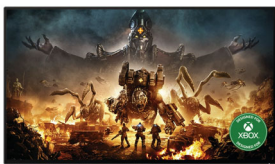




Philips Momentum
4K HDR display with
Ambiglow

Designed for Xbox

Momentum
27" (68.5 cm)
3840 x 2160 (4K UHD)



279M1RV

Optimised performance for next-gen console gaming

For true console-gaming enthusiasts, the Designed for Xbox Momentum display delivers a new era of gaming. Enjoy visual awesomeness and precise colour accuracy with UltraClear 4K Nano IPS Display. DisplayHDR 600 gives vibrant image quality.

Designed for Xbox

- Designed for Xbox for the optimal gaming experience
- Smooth console gaming at 4K/120 Hz
- 4K/144 Hz PC gaming on the big screen
- Purpose-built for low latency gaming
- SmartImage HDR gives optimal viewing from your HDR content

Design to enhance the senses

- Enhanced audio with DTS Sound™
- Ambiglow adds a new dimension to your viewing experience

Features for gamers needs

- Certified NVIDIA® G-SYNC® compatible for smooth, fast gaming
- IPS Nano colour technology extends gamut for vibrant visuals
- USB-C one cable does it all
- MultiView enables simultaneous dual connection and view
- Access and display multiple sources on two devices



reddot winner 2020

PHILIPS

4K HDR display with Ambiglow
Designed for Xbox Momentum, 27" (68.5 cm), 3840 x 2160 (4K UHD)

279M1RV/01

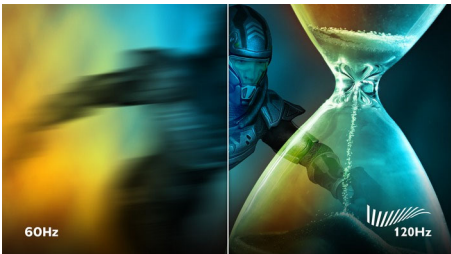
Highlights

Designed for Xbox



Unleash your console gaming. We partnered with the Xbox team to develop this Designed for Xbox display that is validated to deliver the optimal Xbox Series X visual performance the moment that you plug it in.

4K/120 Hz Console gaming



Game with ultra-clear 4K resolution at a smooth 120 Hz refresh rate when you connect your Xbox Series X and other next-gen consoles via one of multiple HDMI 2.1 connections. A faster refresh rate ensures less skipped frames, showing enemy movement in an ultra-clear, smooth motion to easily target them.

4K/144 Hz PC gaming



PC gamers who demand a true 4K gaming experience with the fastest refresh rate of 144 Hz can now enjoy even smoother performance with the included connections.

Low Latency Gaming



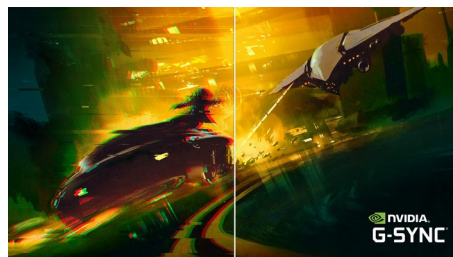
Unlike standard TVs, Philips Momentum gaming displays are purpose-built with low lag and lightning-fast pixel response as a priority and supports fast-paced, reaction time-sensitive games. The display also provides variable refresh rate (VRR) support for Xbox Series X to achieve a seamlessly smooth motion.

DTS Sound™



DTS Sound is an audio-processing solution designed to optimise the playback of music, movies, streaming and games on the PC regardless of form factors. DTS Sound enables an immersive virtual surround sound experience, complete with rich bass and dialogue enhancement and maximised volume levels free of any clipping or distortion.

NVIDIA® G-SYNC® Compatible



When playing intense games with high refresh rates, screen tearing may appear without optimal graphics synchronisation. Certified as NVIDIA® G-SYNC® compatible, variable

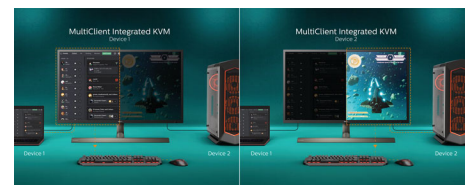
refresh rate (VRR) reducing screen tearing and syncing your monitor's refresh rate with your graphic card's output for a smoother gaming experience. Scenes appear instantly, objects look sharper and gameplay is smooth, giving you a stunning visual experience and a serious competitive edge.

IPS Nano Color



For critical imaging, gaming and productivity needs, Nano IPS display provides precise colour accuracy across a wide viewing angle without colour shift. Richer reds, lush greens and deeper blues. Ultra Wide-Color with IPS Nano Color technology uses KSF enhanced phosphor nanoparticles to absorb excess light created by the screen to produce amazing colour. True-to-life colour. Our display panels achieve up to 98% coverage of the DCI-P3 colour gamut standard for colour purity as defined by The Society of Motion Pictures and Television Engineers for cinematic picture quality.

MultiView and built-in KVM



Control and switch between two devices through a single keyboard and mouse with the built-in KVM. MultiView lets you survey both sources simultaneously on one screen. With these features, you can reduce cable clutter and save valuable time. Perfect for streamers with two PCs, content creators or when prepping devices for a LAN event.



Specifications

Picture/Display

- LCD panel type: Nano IPS
- Backlight type: W-LED system
- Panel Size: 27 inch / 68.5 cm
- Effective viewing area: 603.9 (H) x 347.45 (V) mm
- Aspect ratio: 16:9
- Maximum resolution: HDMI/DP: 3840 x 2160 @ 144 Hz*; USB-C: 3840 x 2160 @ 120 Hz
- Pixel Density: 163 PPI
- Response time (typical): 1 ms (Grey to Grey)*
- Low Input Lag
- Brightness: 450 cd/m²
- SmartContrast: Mega Infinity DCR
- Contrast ratio (typical): 1000:1
- Pixel pitch: 0.1554 x 0.1554 mm
- Viewing angle: 178° (H)/178° (V), @ C/R > 10
- Flicker-free
- HDR: DisplayHDR 600 certified
- Colour gamut (min.): DCI-P3: 98%*
- Colour gamut (typical): NTSC 112%*, sRGB 133%*, Adobe RGB: 110.1%*
- Picture enhancement: SmartImage game
- Display colours: Colour support 1.07 billion colours
- Scanning Frequency: HDMI: 30–135 kHz (H) / 48–144 Hz (V); DP: 30–254 kHz (H) / 48–144 Hz (V); USB-C: 30–254 kHz (H) / 48–120 Hz (V)
- LowBlue Mode
- sRGB
- SmartUniformity: 97 ~ 102%
- Delta E: < 2 (sRGB)
- Ambiglow: 4 sided
- G-SYNC: Compatible 60 Hz ~ 144 Hz (DP)*
- Adaptive sync
- HDMI 2.1 Feature: VRR, FRL

Connectivity

- Signal Input: HDMI 2.1 x 3, DP 1.4 x 1, USB-C x 1 (DP Alt mode, PD 65 W)
- USB: USB-B x 1 (upstream), USB 3.2 x 4 (downstream with 2 fast charge B.C 1.2)
- Sync Input: Separate Sync
- Audio (In/Out): Headphone out

Convenience

- Built-in Speakers: 5 W x 2, DTS Sound
- MultiView: PBP (2 x devices)
- KVM: USB-C, USB-B
- User convenience: Power On/Off, Menu/OK, Input/Up, Game Settings/Down, SmartImage game/Back
- OSD Languages: Brazil Portuguese, Czech, Dutch, English, Finnish, French, German, Greek, Hungarian, Italian, Japanese, Korean, Polish, Portuguese, Russian, Spanish, Simplified Chinese, Swedish, Turkish, Traditional Chinese, Ukrainian

- Other convenience: Kensington lock, VESA mount (100 x 100 mm)
- Plug and Play Compatibility: DDC/CI, Mac OS X, sRGB, Windows 10 / 8.1 / 8 / 7

Stand

- Height adjustment: 130 mm
- Swivel: +/- 35 degree
- Tilt: -5/20 degree

Power

- On mode: 62.7 W (typ.)
- Standby mode: 0.5 W (typ.)
- Off mode: 0.3 W (typ.)
- Power LED indicator: Operation - White, Standby mode - White (flashing)
- Power supply: External, 100–240 VAC, 50–60 Hz

Dimensions

- Product with stand (max height): 609 x 545 x 282 mm
- Product without stand (mm): 609 x 353 x 75 mm
- Packaging in mm (W x H x D): 730 x 470 x 224 mm

Weight

- Product with stand (kg): 9.00 kg
- Product without stand (kg): 5.20 kg
- Product with packaging (kg): 12.32 kg

Operating conditions

- Temperature range (operation): 0°C to 35°C °C
- Temperature range (storage): -20°C to 60°C °C
- Relative humidity: 20%-80 %
- Altitude: Operation: +12,000 ft (3658 m), Non-operation: +40,000 ft (12,192 m)
- MTBF: 50 000 (Excluded backlight) hour(s)

Sustainability

- Environmental and energy: RoHS
- Recyclable packaging material: 100 %
- Specific Substances: Mercury free, PVC/BFR free housing

Compliance and standards

- Regulatory Approvals: CB, CE Mark, CU-EAC, EAEU RoHS, TUV/ISO9241-307, TUV-BAUART

Cabinet

- Colour: Black
- Finish: Textured/Glossy

What's in the box?

- Monitor with stand
- Cables: DP cable, HDMI cable, USB-C to C cable, Power cable
- User Documentation



Issue date 2022-06-29

Version: 5.1.1

12 NC: 8670 001 71569
EAN: 87 12581 77247 5

© 2022 Koninklijke Philips N.V.
All Rights reserved.

Specifications are subject to change without notice.
Trademarks are the property of Koninklijke Philips N.V.
or their respective owners.

www.philips.com

- * "IPS" word mark / trademark and related patents on technologies belong to their respective owners.
- * The maximum resolution works for either HDMI input or DP input.
- * For best output performance, please always ensure that your graphic card is capable of achieving the maximum resolution and refresh rate of this Philips display.
- * Response time value equal to SmartResponse
- * BT, 709 / DCI-P3 Coverage based on CIE1976
- * NTSC Area based on CIE 1976
- * sRGB Area based on CIE1931
- * Adobe RGB Coverage based on CIE 1976
- * NVIDIA® G-SYNC® support interface: DisplayPort
- * Make sure to update NVIDIA® G-SYNC® driver to the latest version, see more information on NVIDIA website: <https://www.nvidia.com/>
- * Make sure that your graphic card supports NVIDIA® G-SYNC®
- * The monitor may look different from feature images.