

Philips Gaming Monitor  
Quad HD gaming monitor

## Momentum 5000

32 (31.5" / 80 cm diag.)  
2560 x 1440 (QHD)

32M1N5500VS



## Feel your game

This Philips gaming monitor delivers crystal-clear visuals and smooth gameplay. A rapid 165Hz with DisplayHDR 400 create a polished and lifelike experience. The slim-frame display with Ultra Wide-Color enhances visual immersion.

### The gaming advantage is yours

- AMD FreeSync™ Premium; tear free, stutter free, fluid gaming
- 165Hz refresh rates for ultra-smooth, brilliant images
- 1ms (MPRT) fast response for crisp image and smooth gameplay
- Low input lag reduces time delay between devices to monitor

### Immersive visuals

- VA display delivers awesome images with wide viewing angles
- Crystalclear images with Quad HD 2560 x 1440 pixels
- Ultra Wide-Color wider range of colors for a vivid picture
- SmartImage HDR gives optimal viewing from your HDR content

### Features designed for you

- SIAA certified antibacterial treatment to keep sanitary
- LowBlue mode and Flicker-free easy-on-the eyes viewing
- Built-in stereo speakers for multimedia
- EasySelect menu toggle key for quick on-screen menu access



# PHILIPS

Quad HD gaming monitor  
Momentum 5000 32 (31.5" / 80 cm diag.), 2560 x 1440 (QHD)

32M1N5500VS/69

# Highlights

## AMD FreeSync™ Premium



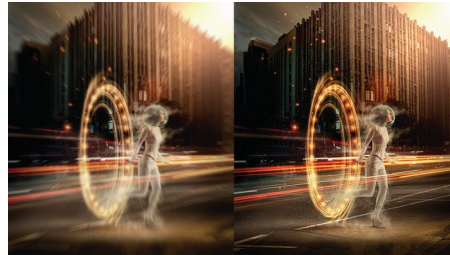
Gaming shouldn't be a choice between choppy gameplay or broken frames. AMD FreeSync™ Premium equips serious gamers with a fluid, tear-free gameplay experience at peak performance. There are no compromises, game confidently with a high refresh rate, low framerate compensation, and low latency.

## 165Hz Gaming



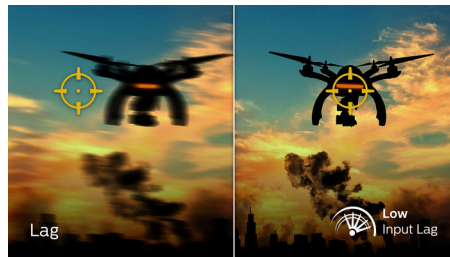
You play intense, competitive gaming. You demand display with lag free, ultra-smooth images. This Philips display redraws the screen image up-to 165 times per second, effectively faster than a standard display. A lower frame rate can make enemies appear to jump from spot to spot on the screen, making them difficult targets to hit. With 165Hz frame rate, you get those critical missing images on the screen which shows enemy movement in ultra-smooth motion so you can easily target them. With ultra-low input lag and no screen tearing, this Philips display is your perfect gaming partner

## 1ms MPRT fast response



MPRT (motion picture response time) is more intuitive way to describe the response time, which directly refers the duration from seeing blurry noise to clean and crisp images. Philips gaming monitor with 1 ms MPRT effectively eliminates smearing and motion blur, delivers sharper and precise visuals to enhance gaming experience. Best choice for playing thrilling and twitch-sensitive games.

## Low Input Lag



Input lag is the amount of time that elapses between performing an action with connected devices and seeing the result on screen. Low input lag reduces the time delay between entering a command from your devices to monitor, greatly improve on playing twitch-sensitive video games, particularly important to whom plays fast-paced, competitive games.

## Crystalclear images



These Philips screens deliver Crystalclear, Quad HD 2560x1440 or 2560x1080 pixel images. Utilizing high performance panels with

high density pixel count, enabled by high bandwidth sources like Displayport, HDMI, Dual link DVI, these new displays will make your images and graphics come alive. Whether you are demanding professional requiring extremely detailed information for CAD-CAM solutions, using 3D graphic applications or a financial wizard working on huge spreadsheets, Philips displays will give you Crystalclear images.

## SmartImage HDR



Select one of SmartImage HDR modes to best suit your needs. HDR Game: Optimize for playing video games. With brighter white and darker black, the gaming scene is vivid and revealing more details, easily spot enemies hiding in the dark corner and shadows. HDR Movie: Ideal for watching HDR movie. Deliver better contrast and brightness for more realistic and immerse viewing experience. HDR Photo: Enhance red, green, and blue for lively visuals. DisplayHDR: VESA DisplayHDR certified\*. Personal: Customize settings in picture menu. \*Please refer to specification for HDR grade.

## Antibacterial-treated surface



Bacteria are often transferred by touching infected surfaces. Philips introduces antibacterial agents with ionic silver treatment on monitor surface to inhibit bacterial growth and reduce bacterial adhesion on constant touch part, to keep the surface clean and reduce bacteria spread.

AMD  
FreeSync  
Premium

165Hz

Fast Response  
1ms MPRT

Low Input Lag

Wide Viewing  
Angle

Quad HD

Ultra Wide Color

VESA CERTIFIED  
DisplayHDR 400

SIAA  
ISO 22196  
Anti Bacteria

# Specifications

## Picture/Display

- LCD panel type: VA LCD
- Backlight type: W-LED system
- Panel Size: 31.5 inch / 80 cm
- Display Screen Coating: Anti-Glare, 3H, Haze 25%
- Effective viewing area: 697.344 (H) x 392.256 (V)
- Aspect ratio: 16:9
- Maximum resolution: HDMI: 2560 x 1440 @ 144 Hz, DP: 2560 x 1440 @ 165 Hz\*
- Pixel Density: 93.24 PPI
- Response time (typical): 4 ms (Gray to Gray)\*
- MPRT: 1 ms
- Low Input Lag
- Brightness: 550 cd/m<sup>2</sup>
- SmartContrast: Mega Infinity DCR
- Contrast ratio (typical): 3000:1
- Pixel pitch: 0.2724 x 0.2724 mm
- Viewing angle: 178° (H) / 178° (V), @ C/R > 10
- Flicker-free
- HDR: DisplayHDR 400 certified
- Color gamut (typical): NTSC 100.8%\*, sRGB 120.6%\*, Adobe RGB 89.9%\*
- Picture enhancement: SmartImage game
- Display colors: 16.7 M
- Scanning Frequency: HDMI: 30 - 230 kHz (H) / 48 - 144 Hz (V), DP: 30 - 250 kHz (H) / 48 - 165 Hz\* (V)
- SmartUniformity: 93 ~ 105%
- Delta E: < 2 (sRGB)
- LowBlue Mode
- EasyRead
- sRGB
- AMD FreeSync™ technology: Premium

## Connectivity

- Signal Input: HDMI 2.0 x 2, DisplayPort 1.4 x 2
- HDCP: HDCP 1.4 (HDMI / DP), HDCP 2.2 (HDMI / DP)
- USB: USB-B x 1 (upstream), USB 3.2 Gen 1 x 4 (downstream with 2 fast charge B.C 1.2)
- Audio (In/Out): Audio out
- Sync Input: Separate Sync

## Convenience

- Built-in Speakers: 5 W x 2
- User convenience: Power On/Off, Menu/OK, Input/Up, Game Settings/Down, SmartImage game/Back
- OSD Languages: Brazil Portuguese, Czech, Dutch, English, Finnish, French, German, Greek, Hungarian, Italian, Japanese, Korean, Polish,

- Portuguese, Russian, Spanish, Simplified Chinese, Swedish, Turkish, Traditional Chinese, Ukrainian
- Other convenience: Kensington lock, VESA mount (100x100mm)
- Plug & Play Compatibility: DDC/CI, Mac OS X, sRGB, Windows 10 / 8.1 / 8 / 7

## Stand

- Tilt: -5/20 degree

## Power

- On mode: 49.2 W (typ.)
- Standby mode: 0.5 W (typ.)
- Off mode: 0.3 W (typ.)
- Power LED indicator: Operation - White, Standby mode- White (blinking)
- Power supply: Internal, 100-240VAC, 50-60Hz

## Dimensions

- Product with stand(max height): 715 x 639 x 297 mm
- Product without stand (mm): 715 x 420 x 60 mm
- Packaging in mm (WxHxD): 930 x 524 x 162 mm

## Weight

- Product with stand (kg): 8.65 kg
- Product without stand (kg): 7.20 kg
- Product with packaging (kg): 13.31 kg

## Operating conditions

- Temperature range (operation): 0°C to 40 °C
- Temperature range (storage): -20°C to 60 °C
- Relative humidity: 20%-80 %
- Altitude: Operation: +12,000ft (3,658m), Non-operation: +40,000ft (12,192m)
- MTBF: 50,000 (Excluded backlight) hour(s)

## Sustainability

- Environmental and energy: RoHS
- Recyclable packaging material: 100 %
- Specific Substances: Mercury free, PVC / BFR free housing, SIAA

## Compliance and standards

- Regulatory Approvals: CB, CE Mark, FCC Class B, ICES-003, CU-EAC, EAEU RoHS, TUV/ISO9241-307, TUV-BAUART, PSB

## Cabinet

- Color: Black
- Finish: Textured



Issue date 2022-11-18

Version: 1.0.1

12 NC: 8670 001 87424  
EAN: 87 12581 80019 2

© 2022 Koninklijke Philips N.V.  
All Rights reserved.

Specifications are subject to change without notice.  
Trademarks are the property of Koninklijke Philips N.V.  
or their respective owners.

[www.philips.com](http://www.philips.com)

\* The maximum resolution works for DP input only.  
\* For best output performance, please always ensure that your graphic card is capable of achieving the maximum resolution and refresh rate of this Philips display.  
\* Response time value equal to SmartResponse  
\* MPRT is to adjust brightness for blur reduction, so cannot adjust brightness while MPRT is turned on. To reduce motion blur, LED backlight will strobe synchronously with screen refresh, which may cause noticeable brightness change.  
\* MPRT is gaming-optimized mode. Turn on MPRT may cause noticeable screen flickering. It is recommended to turn off when you are not using the gaming function.  
\* NTSC Area based on CIE1976  
\* sRGB Area based on CIE1931  
\* Adobe RGB Coverage based on CIE1976  
\* 2020 Advanced Micro Devices, Inc. All rights reserved. AMD, the AMD Arrow logo, AMD FreeSync™ and combinations thereof are trademarks of Advanced Micro Devices, Inc. Other product names used in this publication are for identification purposes only and may be trademarks of their respective companies.  
\* The monitor may look different from feature images.