

Philips Gaming Monitor
Quad HD gaming monitor

Momentum 5000

32 (31.5"/80 cm diag.)
2560 x 1440 (QHD)

32M1N5500VS



Feel your game

This Philips gaming monitor delivers crystal-clear visuals and smooth gameplay. A rapid 165 Hz with DisplayHDR 400 create a polished and lifelike experience. The slim-frame display with Ultra Wide-Color enhances visual immersion.

The gaming advantage is yours

- AMD FreeSync™ Premium; tear free, stutter free, fluid gaming
- 165 Hz refresh rates for ultra-smooth, brilliant images
- 1 ms (MPRT) fast response for crisp images and smooth gameplay
- Low input lag reduces time delay between devices to monitor

Immersive visuals

- VA display delivers awesome images with wide viewing angles
- Crystal clear images with Quad HD 2560 x 1440 pixels
- Ultra Wide-Color wider range of colours for a vivid picture
- SmartImage HDR gives optimal viewing from your HDR content

Features designed for you

- SIAA-certified antibacterial treatment to keep surfaces sanitary
- LowBlue mode and Flicker-free easy-on-the eyes viewing
- Built-in stereo speakers for multimedia
- EasySelect menu toggle key for quick on-screen menu access



PHILIPS

Quad HD gaming monitor
Momentum 5000 32 (31.5"/80 cm diag.), 2560 x 1440 (QHD)

32M1N5500VS/00

Highlights

AMD FreeSync™ Premium



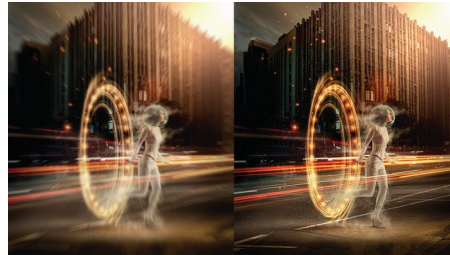
Gaming shouldn't be a choice between choppy gameplay or broken frames. AMD FreeSync™ Premium equips serious gamers with a fluid, tear-free gameplay experience at peak performance. There are no compromises, game confidently with a high refresh rate, low framerate compensation and low latency.

165 Hz Gaming



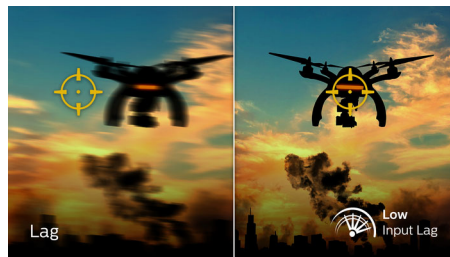
You play intense, competitive gaming. You demand display with lag free, ultra-smooth images. This Philips display redraws the screen image up to 165 times per second, effectively faster than a standard display. A lower frame rate can make enemies appear to jump from spot to spot on the screen, making them difficult targets to hit. With 165 Hz frame rate, you get those critical missing images on the screen which shows enemy movement in ultra-smooth motion so you can easily target them. With ultra-low input lag and no screen tearing, this Philips display is your perfect gaming partner

1 ms MPRT fast response



MPRT (motion picture response time) is a more intuitive way to describe response time, which directly refers to the duration between seeing blurry noise and clean, crisp images. The Philips gaming monitor with 1 ms MPRT effectively eliminates smearing and motion blur and delivers sharper and more precise visuals to enhance your gaming experience. The best choice for playing thrilling and twitch-sensitive games.

Low Input Lag



Input lag is the amount of time that elapses between performing an action with connected devices and seeing the result on screen. Low input lag reduces the time delay between entering a command from your devices to monitor, greatly improving play on twitch-sensitive video games, particularly important for playing fast-paced, competitive games.

CrystalClear images



These Philips screens deliver Crystal Clear, Quad HD 2560 x 1440 or 2560 x 1080 pixel

images. Utilising high-performance panels with high-density pixel count, enabled by high-bandwidth sources like Displayport, HDMI and Dual link DVI, these new displays will make your images and graphics come alive. Whether you are a demanding professional requiring extremely detailed information for CAD-CAM solutions, a user of 3D graphic applications or a financial wizard working on huge spreadsheets, Philips displays will give you Crystal Clear images.

SmartImage HDR



Select one of SmartImage HDR modes to best suit your needs. HDR Game: optimised for playing video games. With brighter white and darker black, the gaming scene is vivid and reveals more details, easily spot enemies hiding in the dark corners and shadows. HDR Movie: ideal for watching HDR movie. Delivers better contrast and brightness for a more realistic and immersive viewing experience. HDR Photo: enhanced red, green and blue for lively visuals. DisplayHDR: VESA DisplayHDR certified*. Personal: customised settings in picture menu. *Please refer to specification for HDR grade.

Antibacterial-treated surface



Bacteria are often transferred by touching infected surfaces. Philips introduces antibacterial agents with ionic silver treatment on monitor surfaces to inhibit bacterial growth and reduce bacterial adhesion on parts that are constantly touched, in order to keep the surface clean and reduce the spread of bacteria.



Specifications

Picture/Display

- LCD panel type: VA LCD
- Backlight type: W-LED system
- Panel Size: 31.5 inch/80 cm
- Display Screen Coating: Anti-Glare, 3H, Haze 25%
- Effective viewing area: 697.344 (H) x 392.256 (V)
- Aspect ratio: 16:9
- Maximum resolution: HDMI: 2560 x 1440 @ 144 Hz, DP: 2560 x 1440 @ 165 Hz*
- Pixel Density: 93.24 PPI
- Response time (typical): 4 ms (Grey to Grey)*
- MPRT: 1 ms
- Low Input Lag
- Brightness: 550 cd/m²
- SmartContrast: Mega Infinity DCR
- Contrast ratio (typical): 3000:1
- Pixel pitch: 0.2724 x 0.2724 mm
- Viewing angle: 178° (H)/178° (V), @ C/R > 10
- Flicker-free
- HDR: DisplayHDR 400 certified
- Colour gamut (typical): NTSC 100.8%*, sRGB 120.6%*, Adobe RGB 89.9%*
- Picture enhancement: SmartImage game
- Display colours: 16.7 M
- Scanning Frequency: HDMI: 30 - 230 kHz (H) / 48 - 144 Hz (V), DP: 30 - 250 kHz (H) / 48 - 165 Hz* (V)
- SmartUniformity: 93 ~ 105%
- Delta E: < 2 (sRGB)
- LowBlue Mode
- EasyRead
- sRGB
- AMD FreeSync™ technology: Premium

Connectivity

- Signal Input: HDMI 2.0 x 2, DisplayPort 1.4 x 2
- HDCP: HDCP 1.4 (HDMI/DP), HDCP 2.2 (HDMI/DP)
- USB: USB-B x 1 (upstream), USB 3.2 Gen 1 x 4 (downstream with 2 fast charge B.C 1.2)
- Audio (In/Out): Audio out
- Sync Input: Separate Sync

Convenience

- Built-in Speakers: 5 W x 2
- User convenience: Power On/Off, Menu/OK, Input/Up, Game Settings/Down, SmartImage game/Back
- OSD Languages: Brazil Portuguese, Czech, Dutch, English, Finnish, French, German, Greek, Hungarian, Italian, Japanese, Korean, Polish, Portuguese, Russian, Spanish, Simplified Chinese, Swedish, Turkish, Traditional Chinese, Ukrainian
- Other convenience: Kensington lock, VESA mount

(100 x 100 mm)

- Plug and Play Compatibility: DDC/CI, Mac OS X, sRGB, Windows 10 / 8.1 / 8 / 7

Stand

- Tilt: -5/20 degree

Power

- On mode: 49.2 W (typ.)
- Standby mode: 0.5 W (typ.)
- Off mode: 0.3 W (typ.)
- Energy Label Class: F
- Power LED indicator: Operation - White, Standby mode - White (flashing)
- Power supply: Internal, 100–240 VAC, 50–60 Hz

Dimensions

- Product with stand (max height): 715 x 639 x 297 mm
- Product without stand (mm): 715 x 420 x 60 mm
- Packaging in mm (W x H x D): 930 x 524 x 162 mm

Weight

- Product with stand (kg): 8.65 kg
- Product without stand (kg): 7.20 kg
- Product with packaging (kg): 13.31 kg

Operating conditions

- Temperature range (operation): 0°C to 40 °C
- Temperature range (storage): -20°C to 60 °C
- Relative humidity: 20%-80 %
- Altitude: Operation: +12,000 ft (3658 m), Non-operation: +40,000 ft (12,192 m)
- MTBF: 50 000 (Excluded backlight) hour(s)

Sustainability

- Environmental and energy: RoHS
- Recyclable packaging material: 100 %
- Specific Substances: Mercury free, PVC/BFR free housing, SIAA

Compliance and standards

- Regulatory Approvals: CB, CE Mark, FCC Class B, ICES-003, CU-EAC, EAEU RoHS, TUV/ISO9241-307, TUV-BAUART

Cabinet

- Colour: Black
- Finish: Textured

What's in the box?

- Monitor with stand
- Cables: HDMI cable, DisplayPort cable, USB upstream cable, Power cable
- User Documentation



Issue date 2022-06-14

Version: 5.2.1

12 NC: 8670 001 79626
EAN: 87 12581 78114 9

© 2022 Koninklijke Philips N.V.
All Rights reserved.

Specifications are subject to change without notice.
Trademarks are the property of Koninklijke Philips N.V.
or their respective owners.

www.philips.com

* The maximum resolution works for DP input only.

* For best output performance, please always ensure that your graphic card is capable of achieving the maximum resolution and refresh rate of this Philips display.

* Response time value equal to SmartResponse

* MPRT adjusts the brightness for blur reduction, so the brightness cannot be adjusted while MPRT is turned on. To reduce motion blur, the LED backlight will strobe in time with the screen refresh rate, which may cause a noticeable change in brightness.

* MPRT is a gaming-optimised mode. Turning on MPRT may cause noticeable screen flickering. It is recommended to turn this mode off when you are not using the gaming function.

* NTSC Area based on CIE 1976

* sRGB Area based on CIE1931

* Adobe RGB Coverage based on CIE 1976

* 2020 Advanced Micro Devices, Inc. All rights reserved. AMD, the AMD Arrow logo, AMD FreeSync™ and combinations thereof are trademarks of Advanced Micro Devices, Inc. Other product names used in this publication are for identification purposes only and may be trademarks of their respective companies.

* The monitor may look different from feature images.