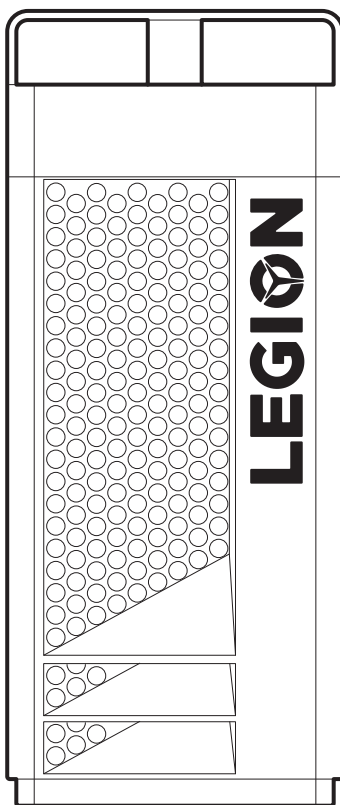




# Legion T730/T530 Series

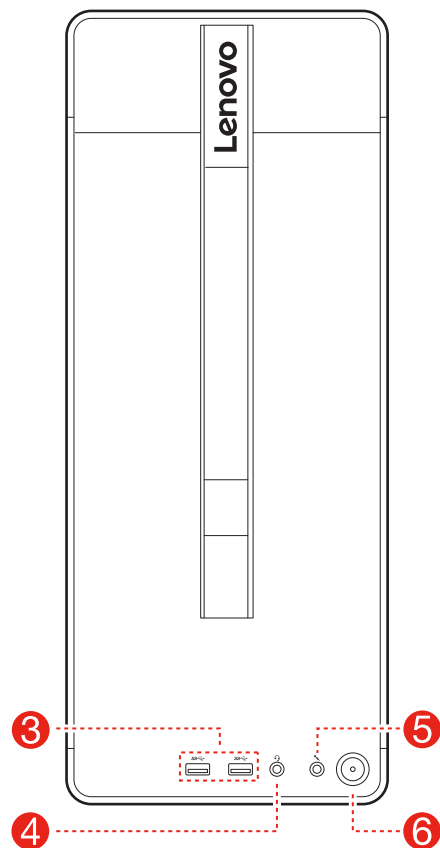
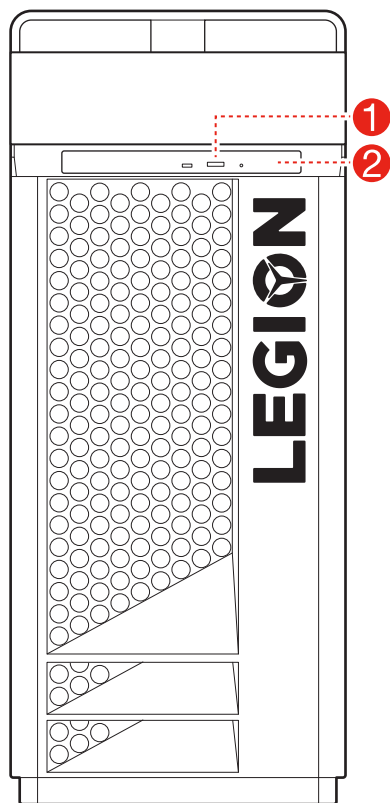
## User Guide

Machine Type (MT): 90JF, 90JL, 90JU, 90JY, 90K0, 90L3, 90L4, 90JG  
Energy Star MT: 90JF, 90JL, 90JY, 90L3



## Front and top view of the computer

---



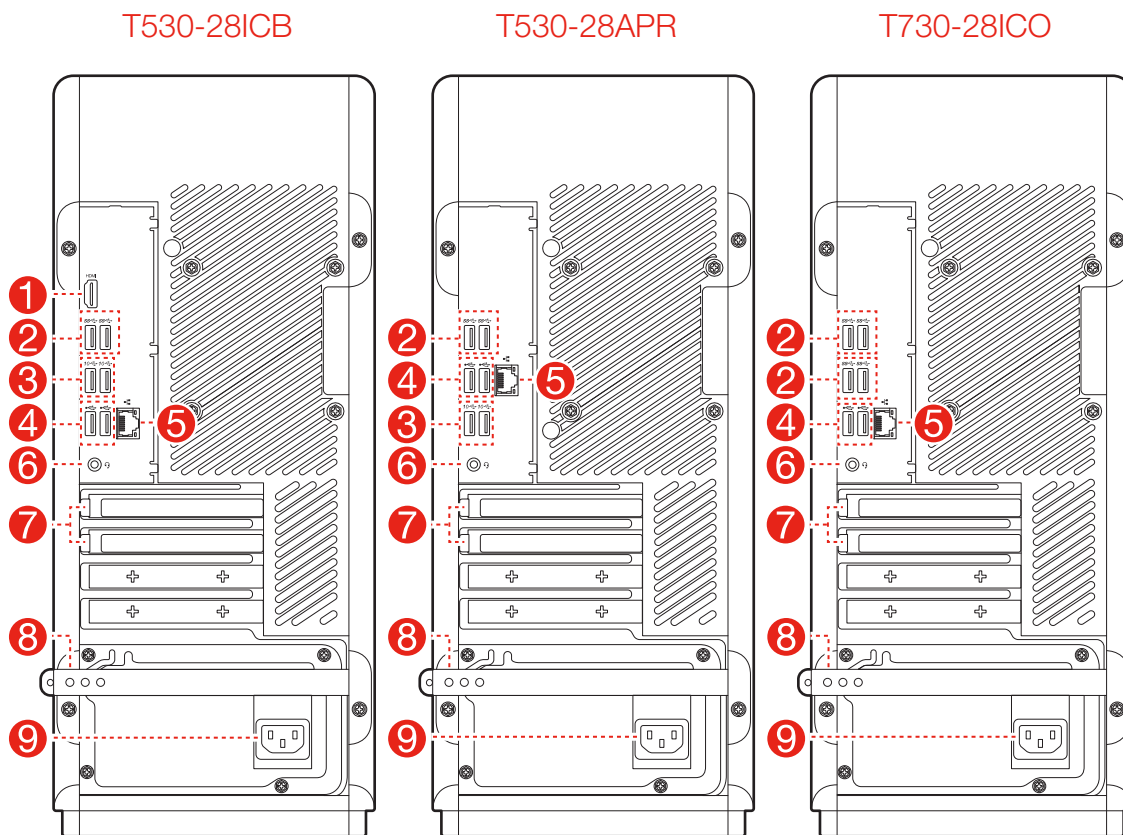
- ① Optical drive eject button (selected models only)
- ② Optical drive (selected models only)

- ③ USB 3.1 Gen 1 connectors (2)
- ④ Headset connector
- ⑤ Microphone connector
- ⑥ Power button

**ATTENTION:** Be sure not to block any air vents on the computer. Blocked air vents may cause thermal problems.

**NOTE:** This computer only can be placed in a vertical position.

## Rear view of the computer



- |                                |   |
|--------------------------------|---|
| ① HDMI-out connector           | ⑥ Headset connector                           |
| ② USB 3.1 Gen 1 connectors (2) | ⑦ Expansion card slots (such as graphic card) |
| ③ USB 3.1 Gen 2 connectors (2) | ⑧ Rubber cable tie                            |
| ④ USB 2.0 connectors (2)       | ⑨ Power connector                             |
| ⑤ Ethernet connector           |   |

**NOTE:** If your model has two VGA monitor connectors, be sure to use the connector on the graphics adapter.

# Safety information for replacing CRUs

---

Do not open your computer or attempt any repairs before reading the “Important safety information” in the *Safety, Warranty, Environment, Recycling Information Guide* and *Important Product Information Guide* that was included with your computer.

If you no longer have this copy of the *Safety, Warranty, Environment, Recycling Information Guide* and *Important Product Information Guide*, you can obtain one online from the website at <http://www.lenovo.com/UserManuals>.

## Pre-disassembly instructions

---

Before proceeding with the disassembly procedure, make sure that you do the following:

1. Turn off the power to the system and all peripherals.
2. Unplug all power and signal cables from the computer.
3. Place the system on a flat, stable surface.

CRUs for your computer include:

- keyboard
- mouse
- power cord
- computer cover
- hard disk drive
- optical drive
- solid state drive
- heat sink and fan assembly
- PCI express adapter
- memory module
- coin-cell battery
- power supply

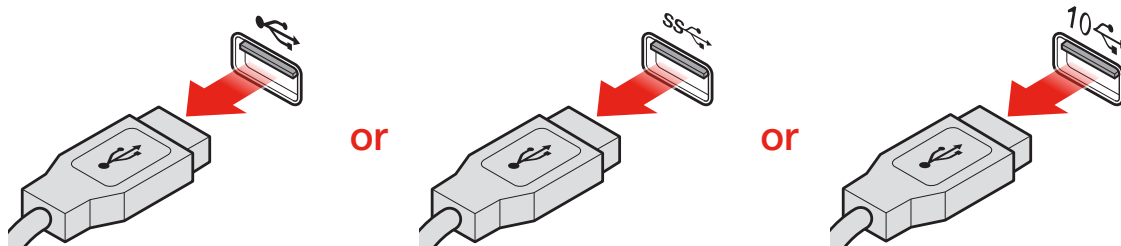


This part contains instructions for replacing the following parts:

- Hard disk drive (Follow steps: 3 4 6)
- Optical drive (Follow steps: 3 4 7)
- Solid state drive (Follow steps: 3 4 8)
- Heat sink and fan assembly (Follow steps: 3 4 9)
- PCI express adapter (Follow steps: 3 4 10)
- Memory module (Follow steps: 3 4 11)
- Coin-cell battery (Follow steps: 3 4 12)
- Power supply (Follow steps: 3 4 13)

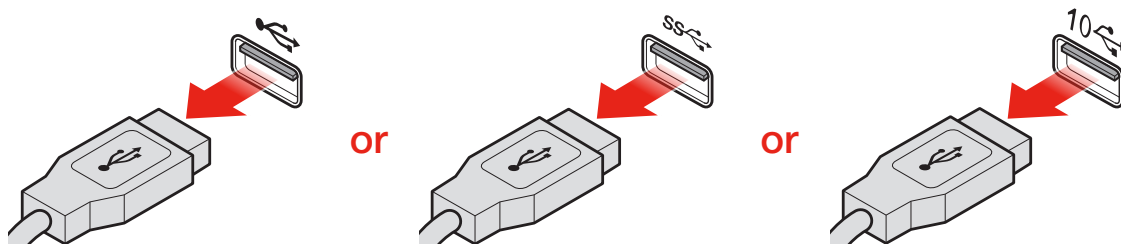
## 1 Removing the keyboard

---



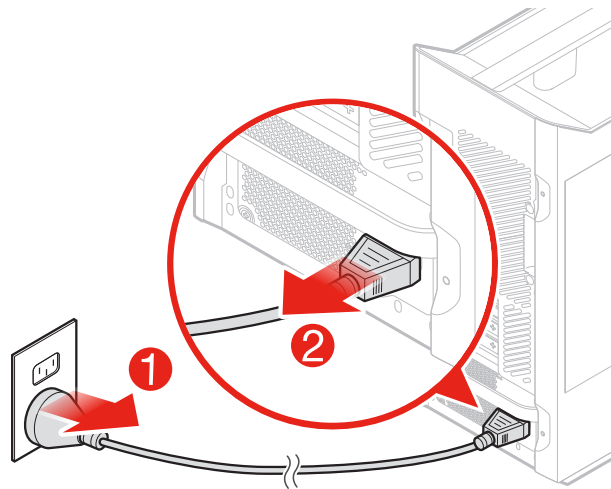
## 2 Removing the mouse

---



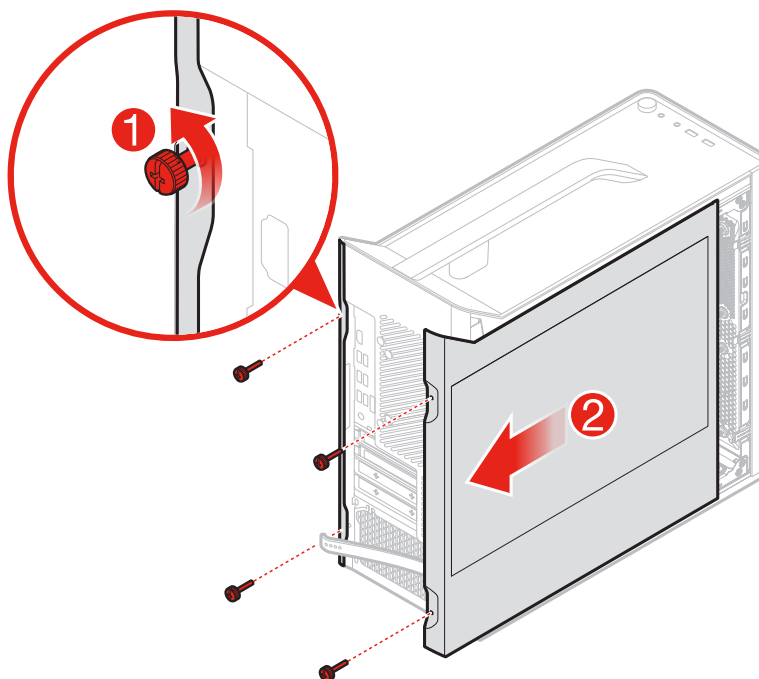
### ③ Removing the power cord

---

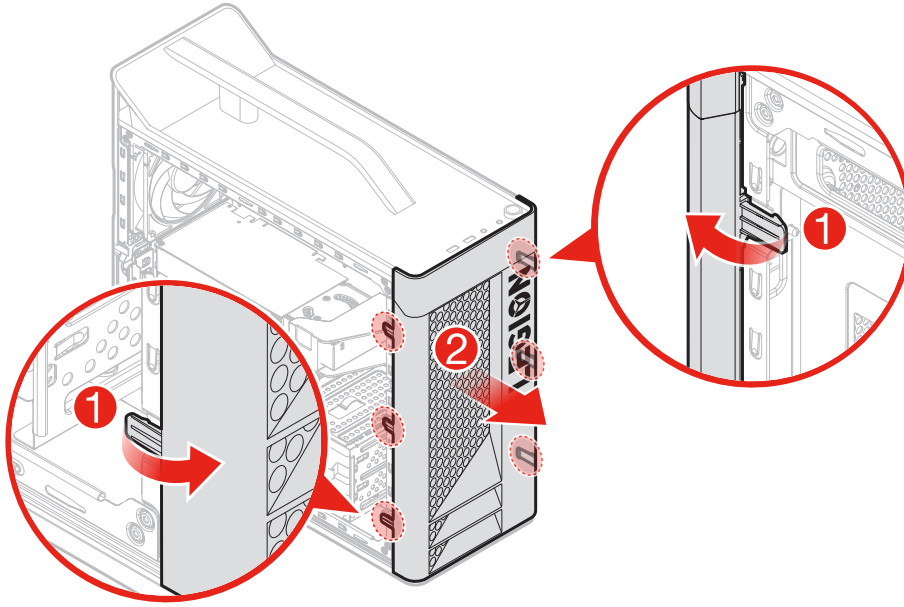


### ④ Removing the computer cover

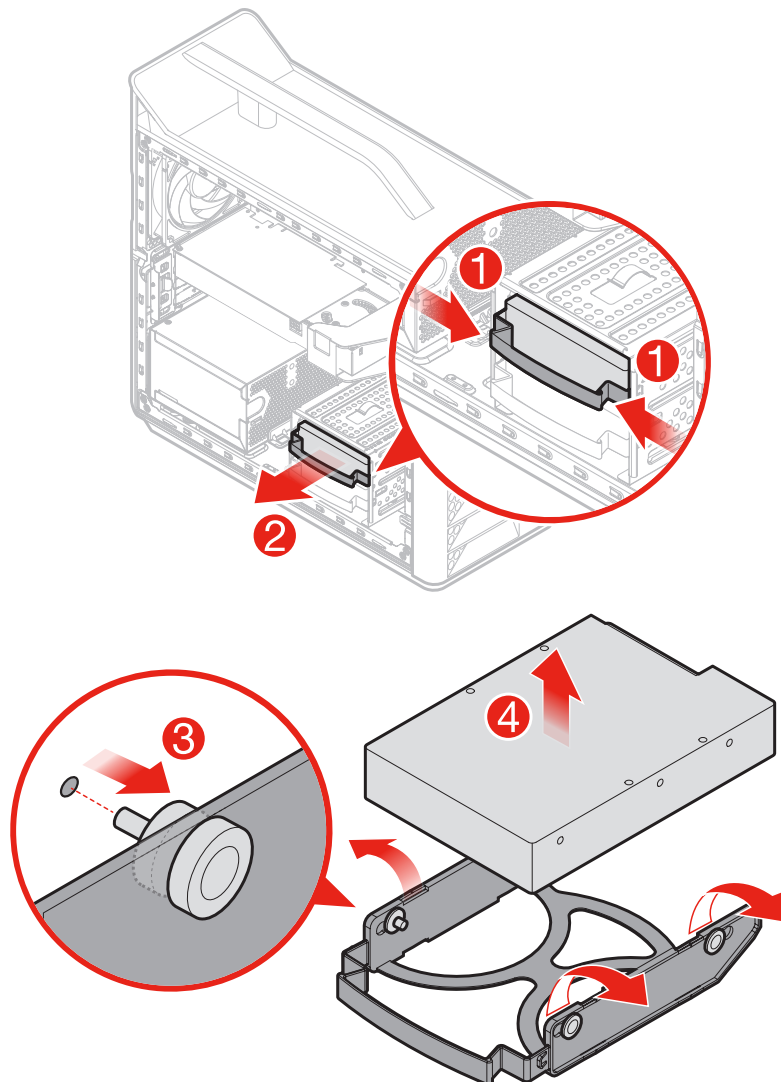
---



## 5 Removing the front bezel

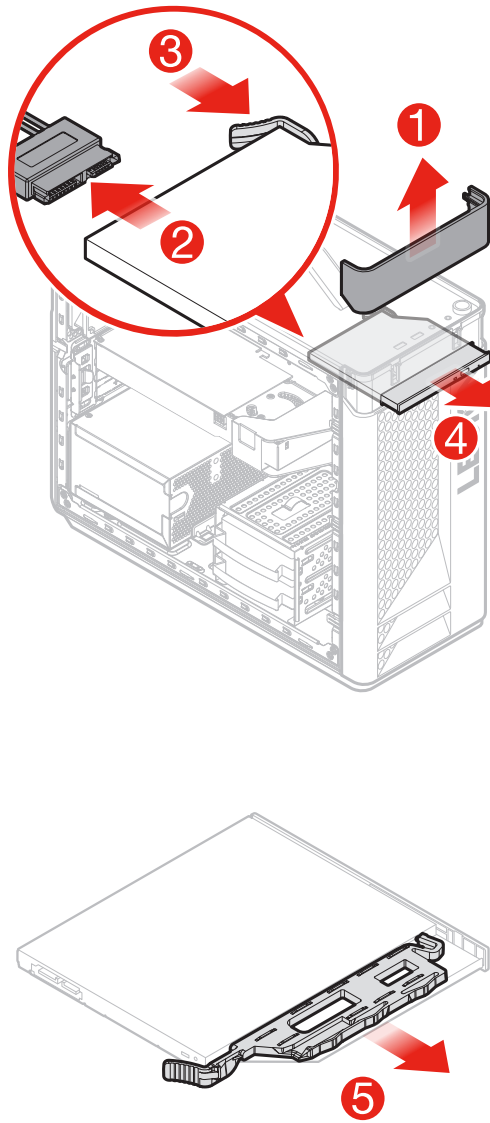


## ⑥ Replacing a hard disk drive



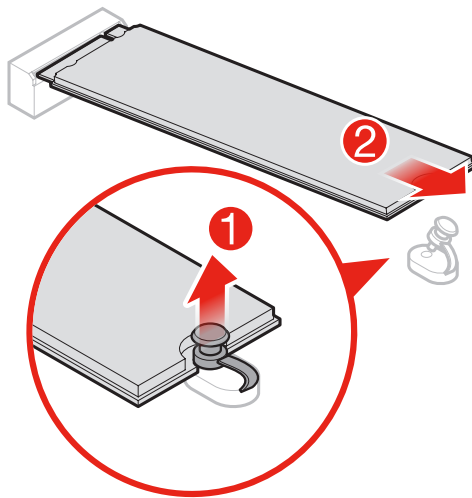
## 7 Replacing the optical drive

---



## 8 Replacing the solid state drive

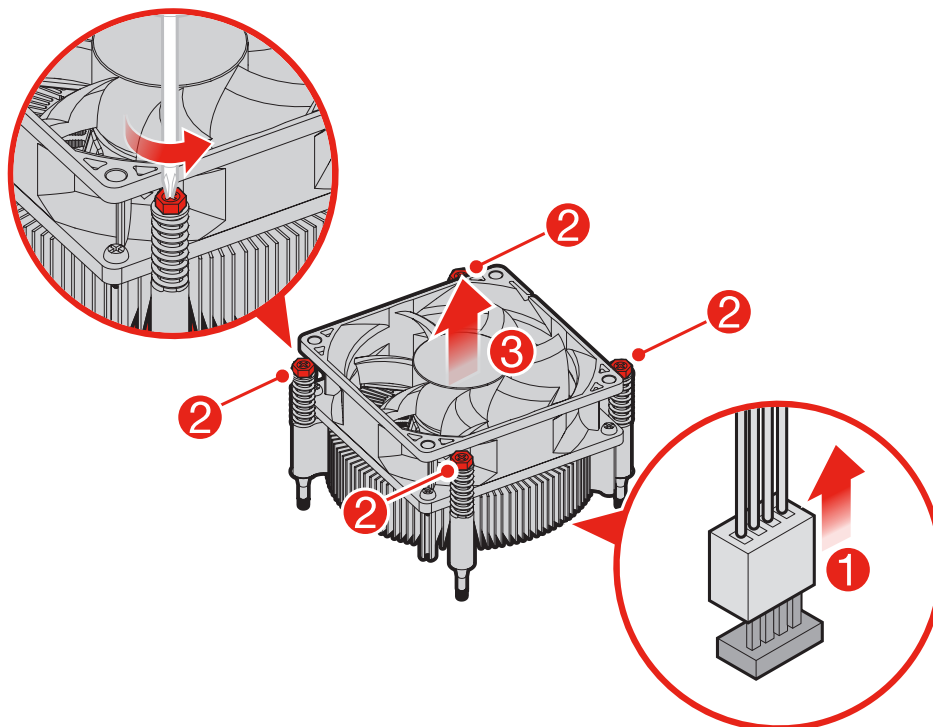
---



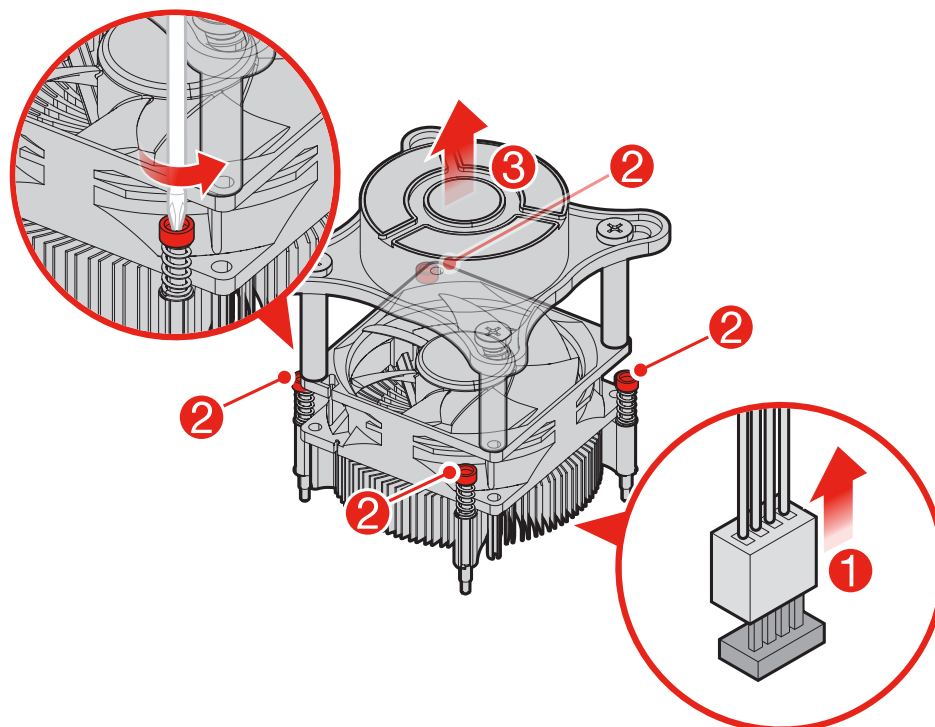
## 9 Replacing the heat sink and fan assembly

---

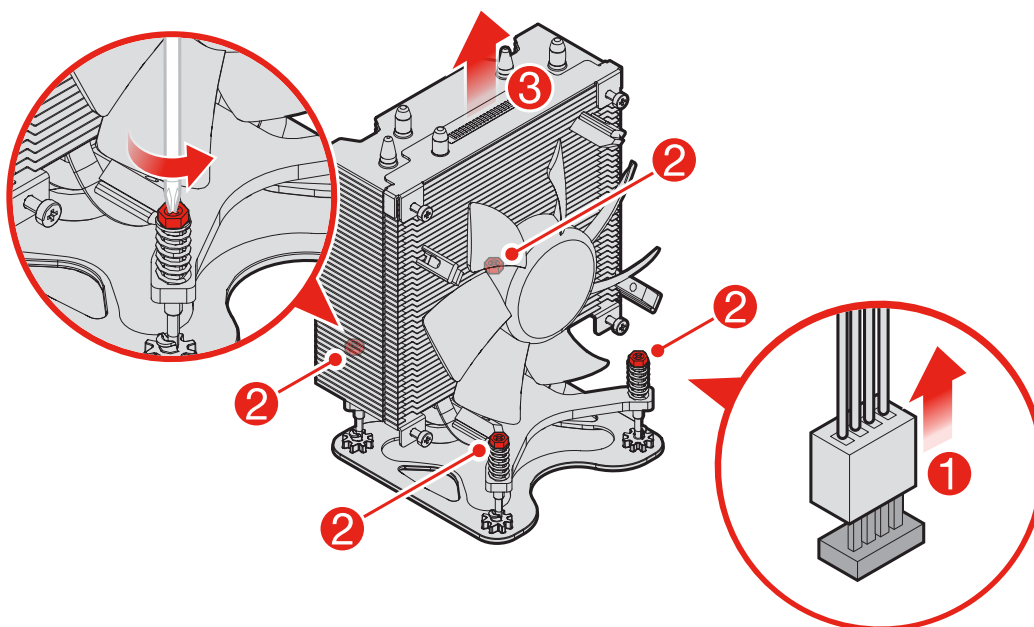
- Type 1



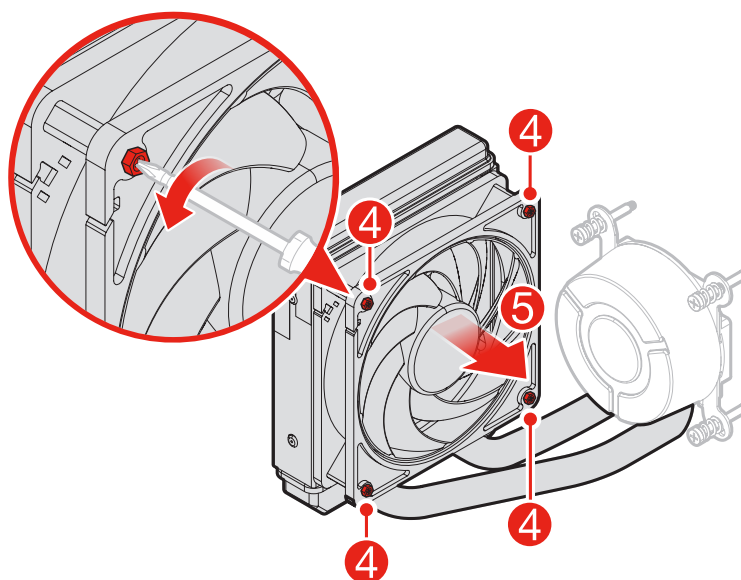
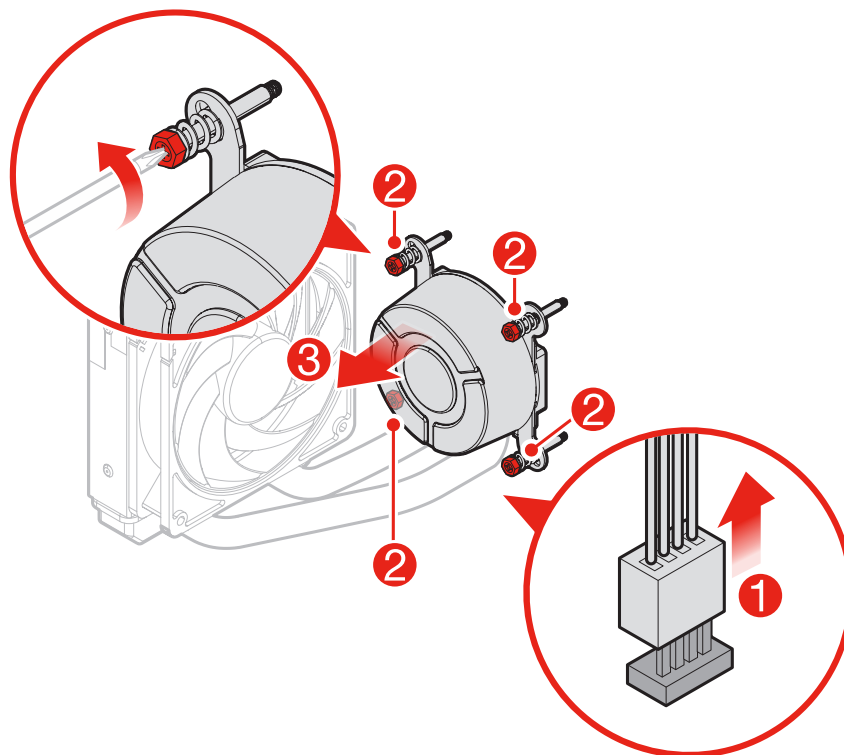
- Type 2



- Type 3

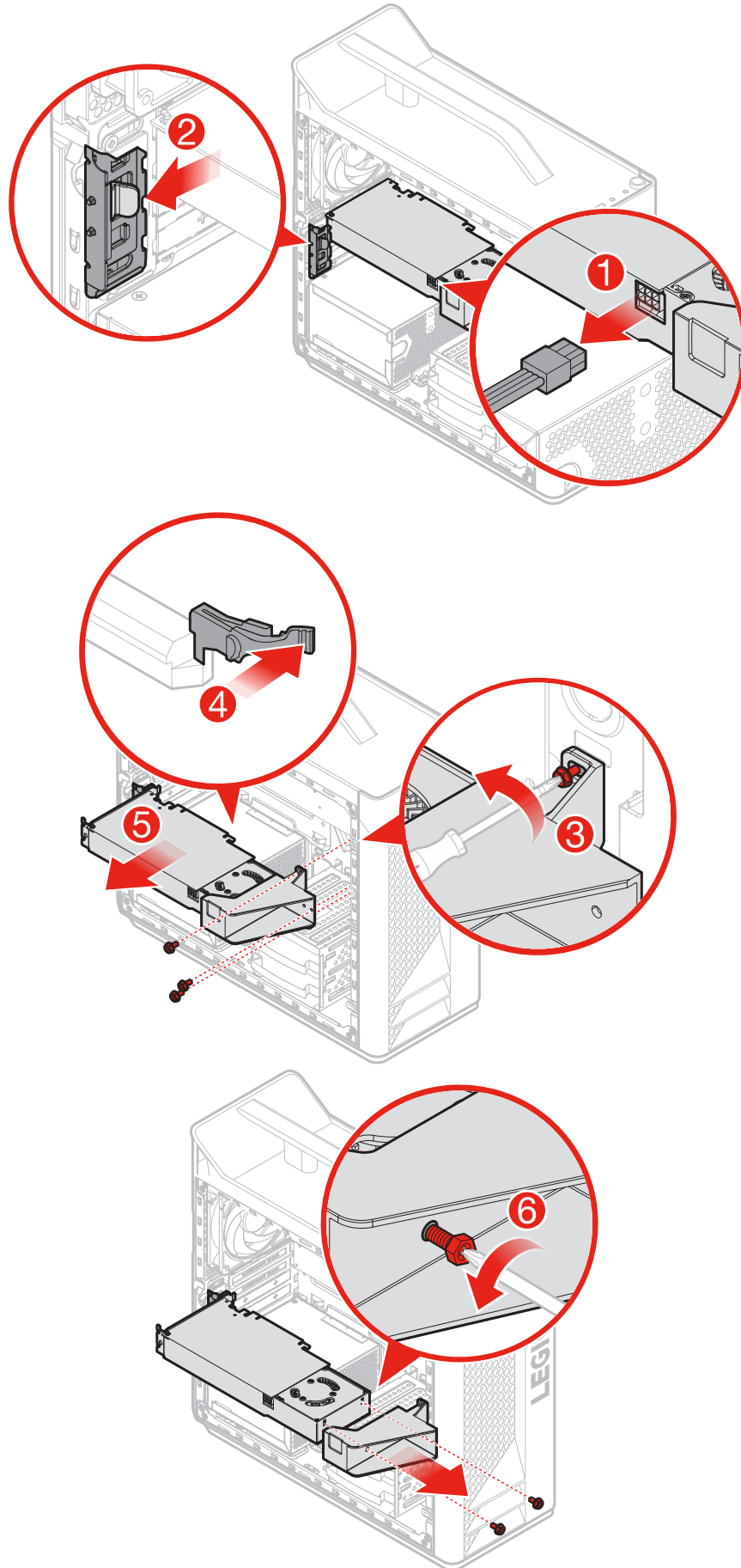


- Type 4



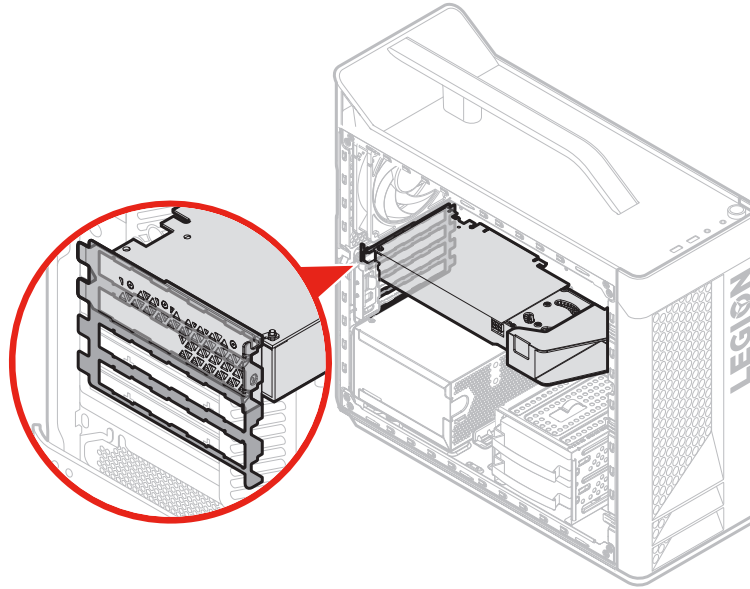
## 10 Replacing a PCI express adapter

---



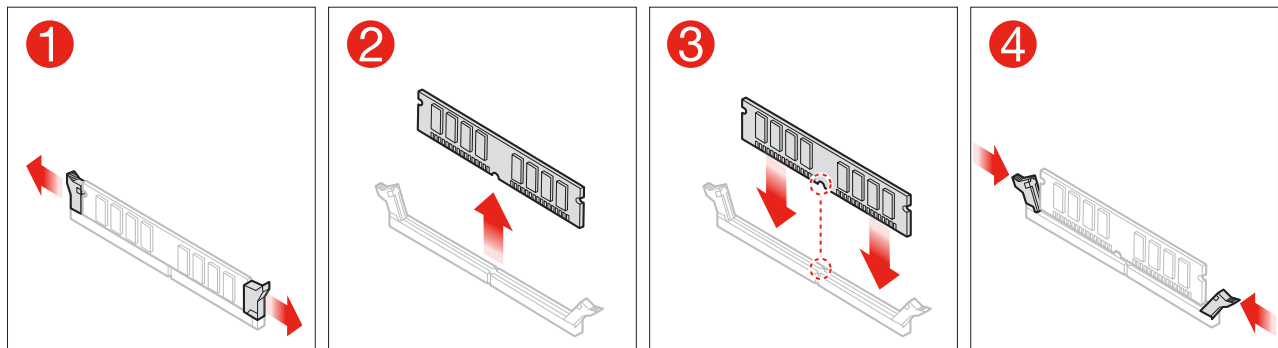


**NOTE:** When you install the PCI express adapter, place the PCI port area toward the EMI gasket with the correct orientation.



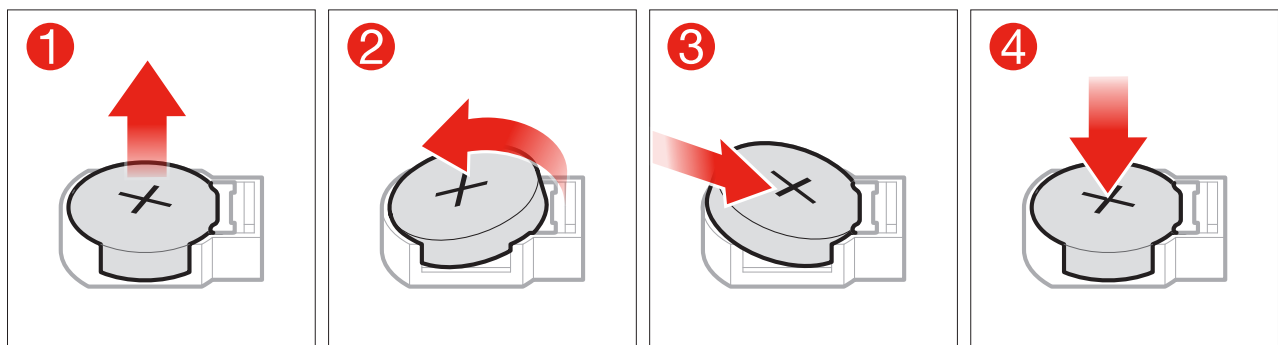
## 11 Replacing the memory module

---



## 12 Replacing the coin-cell battery

---



## 13 Replacing a power supply

---

