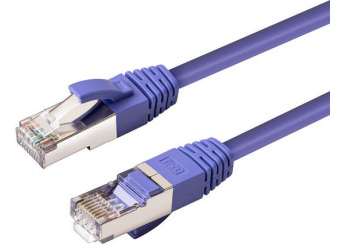


MPN: MC-SFTP6A0025P

CAT6A S/FTP 0.25m Purple LSZH

The MicroConnect CAT6a Patch Cable is ideal for use in demanding environments where 10Gbit and bandwidth up to 500Mhz is required. There are 50u ´ RJ45 connectors to provide a better connection, latch protection to protect the clip from breaking and meter marking on the boot to easy identify the length of the cable.

- To order a full box, please select the following quantity: 250 pcs.
- Fluke CAT6A Channel Link Pass
- PoE+ ready
- LSZH – Low Smoke Zero Halogen
- Snagless hood
- Length marking on boot



Specifications

Certificates	Certification	RoHS, CE
Features	AWG wire size	26/7
	Cable length	0.25 m
	Cable shape	Round
	Cable shielding	S/FTP (S-STP)
	Cable standard	Cat6a
	Conductor material	Copper
	Conductor type	Stranded
	Connector 1	RJ45
	Connector 1 gender	Male
	Connector 2	RJ45
	Connector 2 gender	Male
	Connector contacts plating	Gold
	Connector shielding	Yes
	Data transfer rate	10000 Mbit/s
	Frequency	500 MHz
	Halogen-free	Yes
	Jacket material	Low smoke zero halogen (LSZH)
	Molded cable boot	Yes
	Plug and Play	Yes
	Power over Ethernet (PoE)	Yes
Product colour	Purple	
RoHS compliance	Yes	
Snagless cable boot	Yes	
Logistics data	Export Control Classification Number (ECCN)	EAR99
Other features	Technical features	Kink Protection, strain relief and Snagless

Vendor information

Brand Name	MicroConnect
Warranty	25 Year(s)

Other products in this series

Cable length	Black	Blue	Green	Grey
0.25	MC-SFTP6A0025S	MC-SFTP6A0025B	MC-SFTP6A0025G	MC-SFTP6A0025
0.3				MC-SFTP6A003
0.5	MC-SFTP6A005S	MC-SFTP6A005B	MC-SFTP6A005G	MC-SFTP6A005
1	MC-SFTP6A01S	MC-SFTP6A01B	MC-SFTP6A01G	MC-SFTP6A01
1.5	MC-SFTP6A015S	MC-SFTP6A015B	MC-SFTP6A015G	MC-SFTP6A015
1.8	MC-SFTP6A018S			
2	MC-SFTP6A02S	MC-SFTP6A02B	MC-SFTP6A02G	MC-SFTP6A02-A
3	MC-SFTP6A03S	MC-SFTP6A03B	MC-SFTP6A03G	MC-SFTP6A03
4				
5	MC-SFTP6A05S	MC-SFTP6A05B	MC-SFTP6A05G	MC-SFTP6A05
6				
7.5	MC-SFTP6A075S	MC-SFTP6A075B	MC-SFTP6A075G	MC-SFTP6A075
8				
10	MC-SFTP6A10S	MC-SFTP6A10B	MC-SFTP6A10G	MC-SFTP6A10
15	MC-SFTP6A15S	MC-SFTP6A15B	MC-SFTP6A15G	MC-SFTP6A15
20	MC-SFTP6A20S	MC-SFTP6A20B	MC-SFTP6A20G	MC-SFTP6A20
25				MC-SFTP6A25
30	MC-SFTP6A30S			MC-SFTP6A30

Cable length	Orange	Purple	Red	Transparent
0.25	MC-SFTP6A0025O	MC-SFTP6A0025P	MC-SFTP6A0025R	MC-SFTP6A0025T
0.3				
0.5	MC-SFTP6A005O	MC-SFTP6A005P	MC-SFTP6A005R	
1	MC-SFTP6A01O	MC-SFTP6A01P	MC-SFTP6A01R	
1.5	MC-SFTP6A015O	MC-SFTP6A015P	MC-SFTP6A015R	
1.8				
2	MC-SFTP6A02O	MC-SFTP6A02P	MC-SFTP6A02R	
3	MC-SFTP6A03O	MC-SFTP6A03P	MC-SFTP6A03R	
4				
5	MC-SFTP6A05O	MC-SFTP6A05P	MC-SFTP6A05R	
6				
7.5	MC-SFTP6A075O	MC-SFTP6A075P	MC-SFTP6A075R	
8				
10	MC-SFTP6A10O	MC-SFTP6A10P	MC-SFTP6A10R	
15	MC-SFTP6A15O	MC-SFTP6A15P	MC-SFTP6A15R	

Cable length	Orange	Purple	Red	Transparent
20	MC-SFTP6A20O	MC-SFTP6A20P	MC-SFTP6A20R	
25				
30	MC-SFTP6A30O	MC-SFTP6A30P		

Cable length	White	Yellow
0.25	MC-SFTP6A0025W	MC-SFTP6A0025Y
0.3		
0.5	MC-SFTP6A005W	MC-SFTP6A005Y
1	MC-SFTP6A01W	MC-SFTP6A01Y
1.5	MC-SFTP6A015W	MC-SFTP6A015Y
1.8		
2	MC-SFTP6A02W	MC-SFTP6A02Y
3	MC-SFTP6A03W	MC-SFTP6A03Y
4	MC-SFTP6A04W	
5	MC-SFTP6A05W	MC-SFTP6A05Y
6	MC-SFTP6A06	
7.5	MC-SFTP6A075W	MC-SFTP6A075Y
8	MC-SFTP6A08W	
10	MC-SFTP6A10W	MC-SFTP6A10Y
15	MC-SFTP6A15W	MC-SFTP6A15Y
20	MC-SFTP6A20W	MC-SFTP6A20Y
25		
30		

Other images

