

## ATEN Control System

The ATEN Control System is a standard Ethernet-based solution that connects all the hardware devices in a room to provide intuitive control from any ATEN Control System interface. Together with ATEN Unizon™, it offers a secure and highly scalable platform for centralized server-based monitoring, control, and management of devices located in a single room to floors or even across buildings.

The solution can be easily deployed into an existing installation and integrates seamlessly with ATEN ProAV products, video conferencing systems, third-party AV equipment, lighting systems, air conditioning, motion sensors, power switches, and much more. It is ideal for meeting rooms, conference centers, boardrooms, classrooms or any room that requires collaboration of a variety of hardware devices via streamlined management for optimum efficiency and performance.

### The Solution at a Glance

#### Controllers

Control boxes and control pads that serve as a central controller where all hardware devices and software connect in order to be controlled.

#### Expansion Boxes

Provides additional serial, IR, relay, and digital I/O ports to flexibly increase the amount or type of hardware devices that can connect to your installation.

#### Control Interfaces

Customized interfaces for controlling your hardware devices via touch panels and mobile devices with the ATEN Control System app as well as wall-mount faceplates.

#### Software

Features Configurator Software and additional tools that enable easy set up of control settings and GUIs for use on any ATEN Control System interface.

## Installation Setup

### Connect hardware



### Configure settings



### Download app



## Features

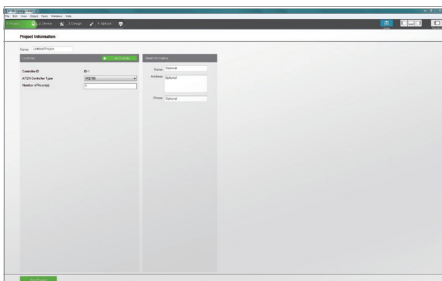
### VK6000 Configurator Software

- Simple profile setup with easy configuration steps via intuitive GUI
- Customizable GUI to be used on mobile devices and PC
- Supports ControlAssist that allows PC control (PC shutdown, media files, PowerPoint files)<sup>1</sup>
- Supports Pronto formatted IR codes - IR command codes can be entered in Hex format
- Supports Modbus protocol - enables integration with Modbus devices, including TCP, RTU, and its checksum data
- Built-in Database Generator for device driver setup and overall device management
- Built-in ATEN Library comprising 10,000+ device drivers and complete ATEN ProAV product drivers
- Scheduling for repeating events
- Programming-based Script Editor for complex monitoring scenario handling
- Two-way communication enables user-defined event monitoring to automatically trigger the next actions
- Status synchronization of managed devices across multiple mobile devices
- Supports status monitoring and action control configurations of third devices implemented on ATEN Unizon™
- Allows for Display Real-time Streaming Protocol (RTSP) and ATEN VE89 series video preview<sup>2</sup>
- Test tool to verify commands in action before uploading the profile to the VK series controllers
- Simulator to simulate and review the customized GUI before uploading

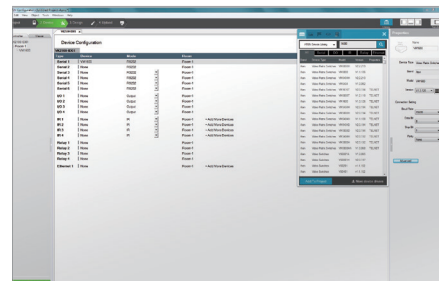
**Note:**

1. For details on the supported PC control actions, refer to the ATEN Control System User Manual.
2. The function is applicable to VK2200 / VK1200.

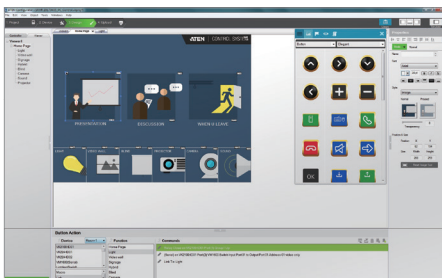
### 1 Start Project



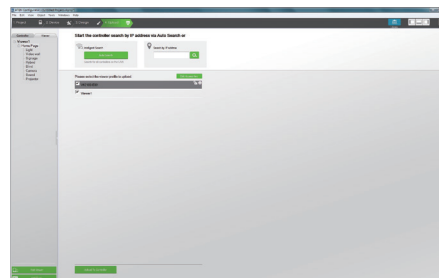
### 2 Configure Device



### 3 Create Viewer



### 4 Upload Profile

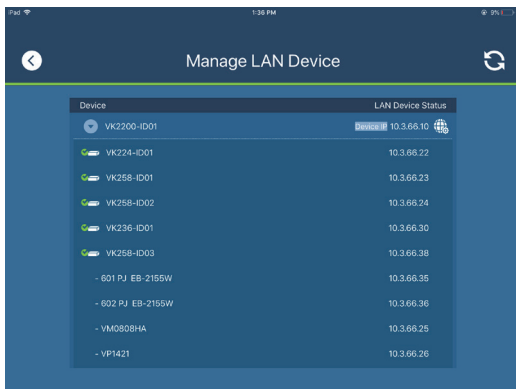


## ATEN Control System App

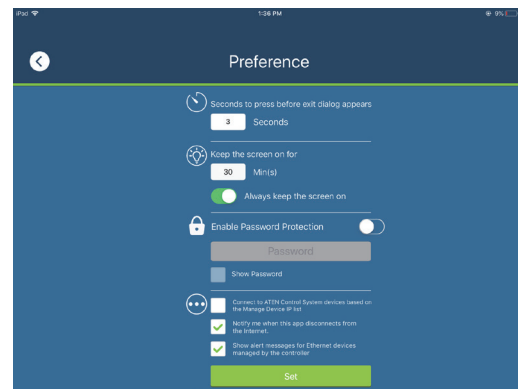
- Allows administrators central control of multiple rooms via profiles on a mobile device or tablet computer
- Restrict user access to profiles via password authentication
- Synchronization of system controls amongst multiple mobile devices and tablet computers
- Any iOS, Android, or Windows mobile device can be used to control the system – no need to purchase costly exclusive user panels
- Demo mode enables friendly demonstration without connecting a controller while familiarizing the users with the solution's most important functions
- Screen Saver function helps energy saving and prolongs the lifetime of the touch screen
- Allows for Display Real-time Streaming Protocol (RTSP) and ATEN VE89 series video preview\*

**Note:** The function is applicable to VK2200 / VK1200.

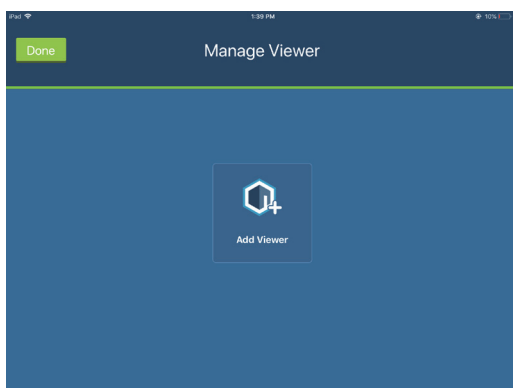
### All Connected LAN Devices at a Glance



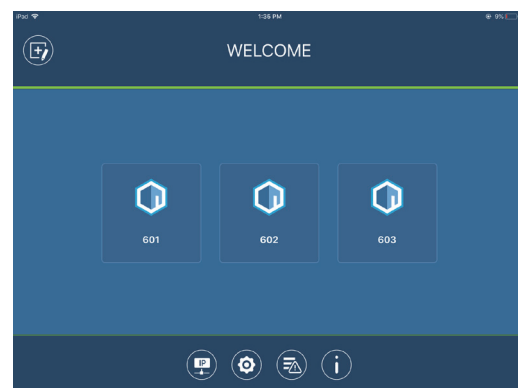
### Preference-Based Configuration



### Create and Manage Room Profiles with Ease

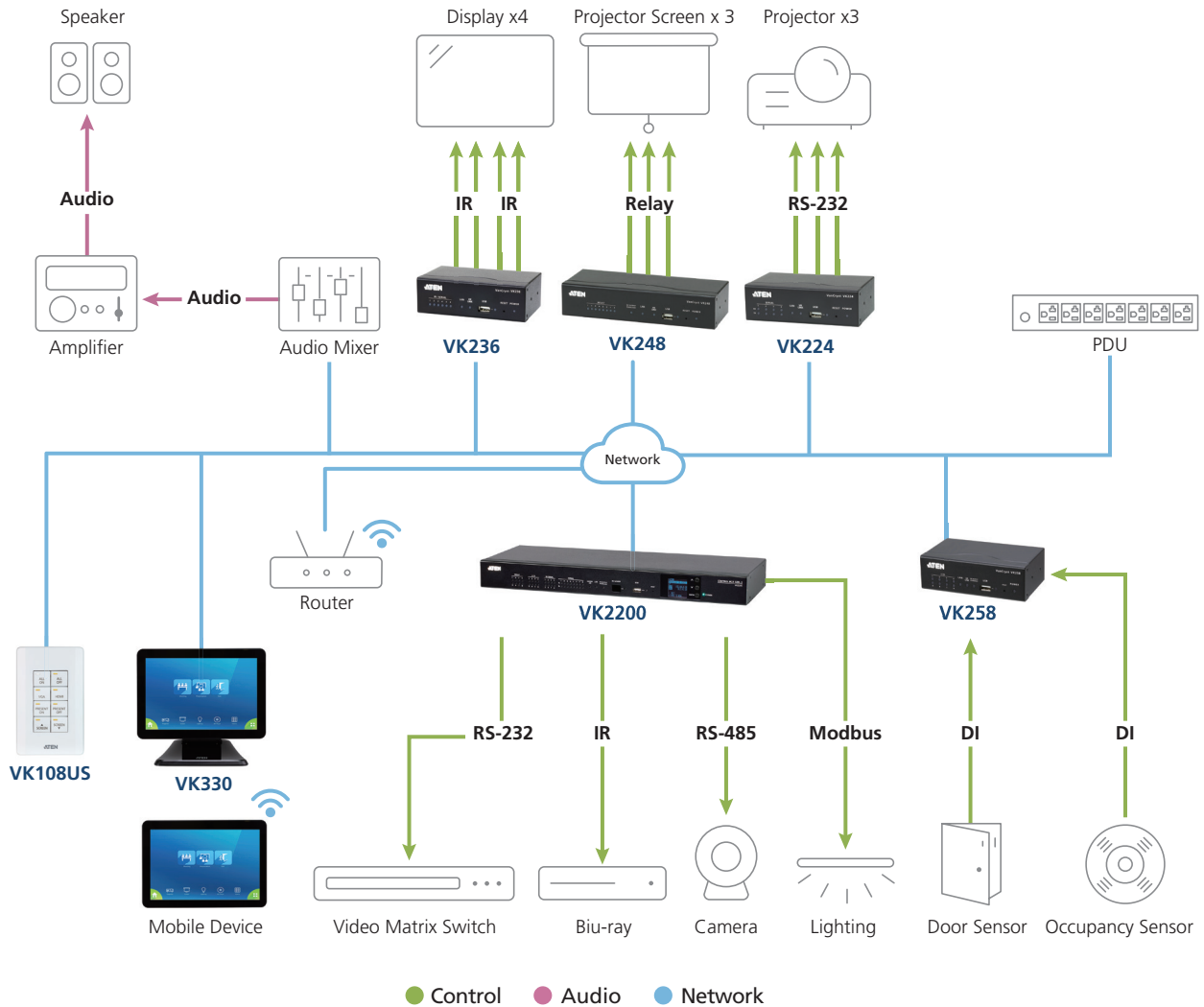


### Bring Multiple Rooms under Centralized Control



## Expandable Solution

with Control Box, Expansion Boxes, Keypad, and Touch Panel  
(VK224+VK236+VK248+VK258+VK108US+VK330 )



### ATEN International Co., Ltd.

3F, No.125, Sec. 2, Datung Rd., Sijhih District., New Taipei City 221, Taiwan  
Phone: 886-2-8692-6789 Fax: 886-2-8692-6767  
www.aten.com E-mail: marketing@aten.com

Product information is subject to change without prior notice.

Released: 11/2022 V12.0

© Copyright 2022 ATEN® International Co. Ltd.  
ATEN and the ATEN logo are registered trademarks of ATEN International Co., Ltd.  
All rights reserved. All other trademarks are the property of their respective owners.

