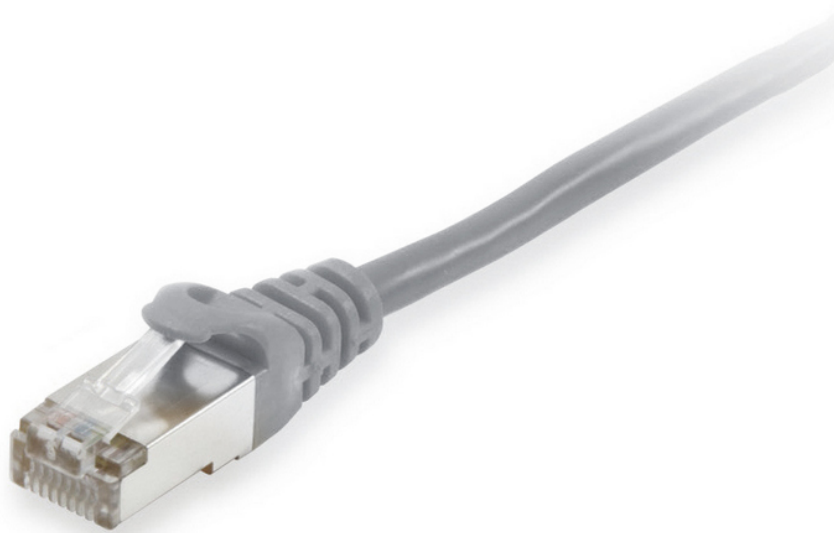


# 606711 Cat.6A S/FTP Patch Cable, Grey, 30m

## Product Images



### Compatible





## Cable ID: Cat.6A S/FTP LSOH -20M

Date / Time: 04/19/2023 10:57:28 AM

Headroom 7.7 dB (NEXT 4,5-7,8)

Test Limit: TIA Cat 6A Channel

Cable Type: Cat 6A S/FTP

NVP: 77.0%

Software Version: V6.6 Build 2

Limits Version: V7.6

Calibration Start Date:

Main (Module): 09/26/2022

Remote (Module): 09/26/2022

## Test Summary: PASS

Model: DSX-8000

Main S/N: 1830072

Remote S/N: 1830152

Main Adapter: DSX-CHA804

Remote Adapter: DSX-CHA804

|                             |            |       |
|-----------------------------|------------|-------|
| Length (m), Limit 100.0     | [Pair 7,8] | 21.0  |
| Prop. Delay (ns), Limit 555 | [Pair 4,5] | 93    |
| Delay Skew (ns), Limit 50   | [Pair 4,5] | 2     |
| Resistance (ohms)           | [Pair 3,6] | 9.07  |
| Insertion Loss Margin (dB)  | [Pair 4,5] | 35.1  |
| Frequency (MHz)             | [Pair 4,5] | 500.0 |
| Limit (dB)                  | [Pair 4,5] | 49.3  |

### Worst Case Margin Worst Case Value

| PASS         | MAIN    | SR      | MAIN    | SR      |
|--------------|---------|---------|---------|---------|
| Worst Pair   | 4,5-7,8 | 4,5-7,8 | 1,2-4,5 | 1,2-4,5 |
| NEXT (dB)    | 7.7     | 8.1     | 14.6    | 17.8    |
| Freq. (MHz)  | 15.0    | 15.0    | 471.0   | 423.0   |
| Limit (dB)   | 53.7    | 53.7    | 26.8    | 28.1    |
| Worst Pair   | 4,5     | 4,5     | 1,2     | 4,5     |
| PS NEXT (dB) | 9.4     | 9.8     | 16.2    | 20.5    |
| Freq. (MHz)  | 9.5     | 14.4    | 471.0   | 473.0   |
| Limit (dB)   | 54.4    | 51.4    | 23.9    | 23.9    |

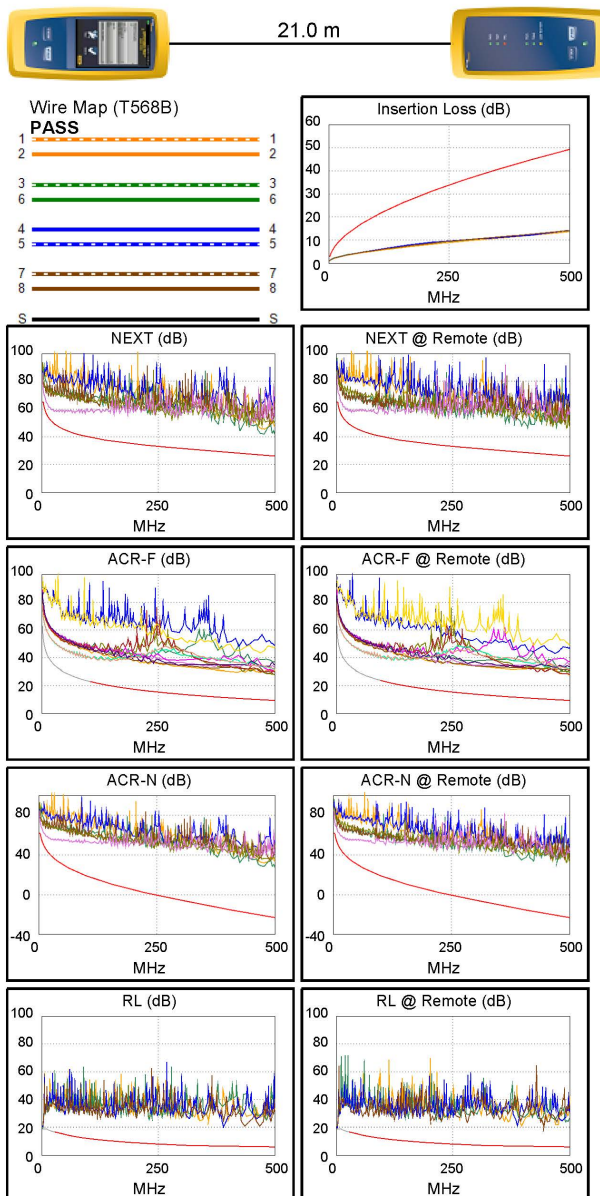
| PASS          | MAIN    | SR      | MAIN    | SR      |
|---------------|---------|---------|---------|---------|
| Worst Pair    | 7,8-4,5 | 4,5-7,8 | 3,6-4,5 | 1,2-3,6 |
| ACR-F (dB)    | 15.4    | 15.5    | 18.8    | 18.5    |
| Freq. (MHz)   | 72.5    | 72.5    | 499.0   | 498.0   |
| Limit (dB)    | 26.1    | 26.1    | 9.3     | 9.3     |
| Worst Pair    | 4,5     | 4,5     | 3,6     | 3,6     |
| PS ACR-F (dB) | 16.3    | 16.2    | 18.8    | 18.1    |
| Freq. (MHz)   | 1.0     | 1.0     | 471.0   | 499.0   |
| Limit (dB)    | 60.3    | 60.3    | 6.8     | 6.3     |

| N/A           | MAIN    | SR      | MAIN    | SR      |
|---------------|---------|---------|---------|---------|
| Worst Pair    | 4,5-7,8 | 4,5-7,8 | 1,2-4,5 | 3,6-7,8 |
| ACR-N (dB)    | 10.9    | 10.9    | 50.7    | 55.1    |
| Freq. (MHz)   | 3.6     | 3.0     | 500.0   | 493.0   |
| Limit (dB)    | 59.8    | 61.4    | -23.2   | -22.7   |
| Worst Pair    | 4,5     | 4,5     | 1,2     | 4,5     |
| PS ACR-N (dB) | 12.1    | 13.0    | 50.8    | 54.9    |
| Freq. (MHz)   | 3.5     | 3.4     | 471.0   | 473.0   |
| Limit (dB)    | 57.6    | 57.9    | -23.8   | -24.0   |

| PASS        | MAIN | SR   | MAIN  | SR    |
|-------------|------|------|-------|-------|
| Worst Pair  | 4,5  | 7,8  | 4,5   | 7,8   |
| RL (dB)     | 14.0 | 13.1 | 14.2  | 14.3  |
| Freq. (MHz) | 49.5 | 57.0 | 389.0 | 445.0 |
| Limit (dB)  | 15.1 | 14.4 | 6.1   | 6.0   |

Compliant Network Standards:

|              |               |            |
|--------------|---------------|------------|
| 10BASE-T     | 100BASE-TX    | 100BASE-T4 |
| 1000BASE-T   | 2.5GBASE-T    | 5GBASE-T   |
| 10GBASE-T    | ATM-25        | ATM-51     |
| ATM-155      | 100VG-AnyLan  | TR-4       |
| TR-16 Active | TR-16 Passive |            |



LinkWare™ PC Version 10.3

Project: DEFAULT

Untitled1

**FLUKE**  
networks®

## Short Description

- 4 x 2 AWG 26/7

- 2. 500MHz performance Bandwidth
- 3. Transmission: 10Gbit
- 4. Suitable for PoE, PoE+
- 5. Stranded bare copper conductor
- 6. Foil and braid shield Reduces EMI/RFI interference
- 7. PIMF (Pairs in metal Foil)
- 8. Molded boot with Strain relief
- 9. RoHS compliant
- 10. Low Smoke Zero Halogen (LSZH/LSOH)
- 11. Compliant with ISO/IEC 11801 and EN 50173

## Description

---

The equip® Cat.6A S/FTP Patch Cord is composed of preeminent materials and fully-examined to conform with industrial standards. Offering higher bandwidth and better signal-to-noise margin, the Cat.6A cable is able to deliver ultrahigh and error-free performance in the most demanding network environments, specially for 10G application

## Additional Information

---

|                              |                         |
|------------------------------|-------------------------|
| Approval and compliance RoHS |                         |
| Conductor material           | Copper                  |
| Conductor size (AWG)         | 26AWG                   |
| Jacket material              | LSZH                    |
| Category                     | Cat.6A                  |
| Flat cable                   | No                      |
| Shielded                     | Yes                     |
| Product weight (kg)          | 0.935                   |
| Cable length                 | 30m                     |
| Color                        | Grey                    |
| EAN                          | 4015867229682           |
| Model Number                 | 606711                  |
| Package contents             | 606711                  |
| Cable Length                 | 30m                     |
| Shielding                    | S/FTP                   |
| Connector 1                  | RJ45 male               |
| Connector 2                  | RJ45 male               |
| Dimensions (W x D x H)       | 8.34 x 11.68 x 30000 mm |

