

peerless-AV®

SMARTMOUNT®
Wall Mounts



SMARTMOUNT®

Wall Mounts

Recently redesigned with upgrades that benefit both the installer and end-user, SmartMount® wall mounts offer the most versatile installation features and mounting options. As a recognizable brand that customers know and love, we kept what was great and added various improvements, resulting in a seamless installation.



Key Features and Benefits



Open Wall Plate

Allows for total wall access and increases electrical and cable management options



Low-Profile Design

Positions display close to the wall for a sleek mounting installation



Vertical Adjustment

Post-Installation Leveling across family of SmartMount® Flat, Tilt & Articulating Wall Mounts



RoHS
2002/95/EC

This series of mounts has passed the approval process for Underwriters Laboratories (UL), promoting safe living and working environments by the application of safety science and hazard-based safety engineering. SmartMount® mounts have been submitted to rigorous safety testing, including tests for strength and “pull out” to a minimum of four times the stated load capacity.

Peerless-AV®'s mounts are also RoHS compliant, which stands for the Restriction of Hazardous Substances. Through the restriction of six hazardous materials in electrical and electronic products, Peerless-AV® provides a safe environment for the consumer.



I-Shaped Adaptor Plate Design

Helps avoid blocking connections on back of display



Locking Tilt

Lock the display at any angle with the ratcheting handle



Integrated Cable Management

Protects, contains and conceals cables for a clean, professional installation

SMARTMOUNT®

Flat Wall Mounts

SmartMount® Flat Wall Mounts boast low-profile designs for a professional appearance. Medium to larger models now have horizontal and vertical adjustment features, allowing you to achieve perfect positioning of the display with post-installation leveling and side-to-side adjustability.

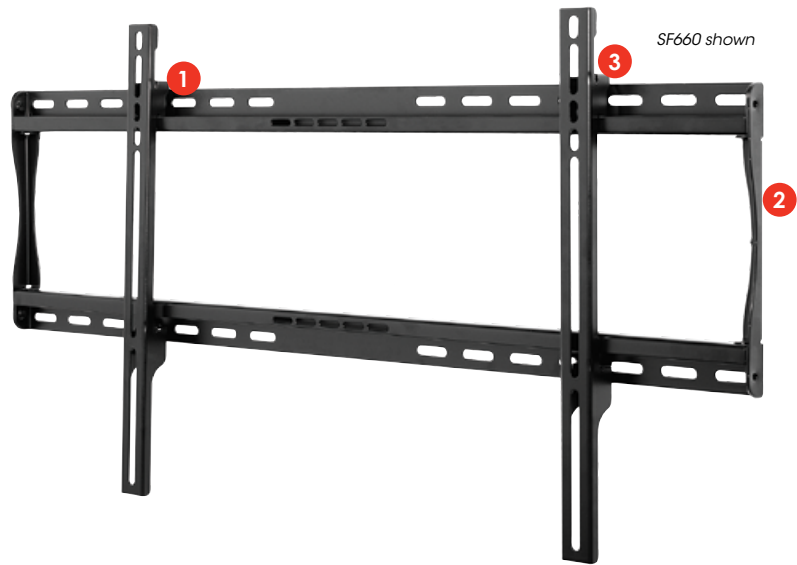


SF630(P)	SF632(P)	os hpd SF640(P)	os hpd SF650(P)
Display Size 10" to 29"	Display Size 22" to 43"	Display Size 32" to 50"	Display Size 39" to 75"
Max Load 80lb (36kg)	Max Load 115lb (52kg)	Max Load 150lb (68kg)	Max Load 175lb (79kg)
VESA® Pattern 75 and 100mm	VESA® Pattern 75, 100, 200 x 100 and 200 x 200mm	Mounting Pattern 450 x 405mm (17.72"W x 15.95"H)	Mounting Pattern 742 x 405mm (29.21"W x 15.95"H)
Distance From Wall 0.96" (24mm)	Distance From Wall 1.02" (26mm)	Distance From Wall 1.20" (30mm)	Distance From Wall 1.20" (30mm)
Metal Stud Accessory ACC215	Metal Stud Accessory ACC215	Metal Stud Accessory ACC415	Metal Stud Accessory ACC415

- Display adaptor simply slides into the wall plate for quick and easy installation

- Low-profile design positions display close to the wall

- Offers up to 0.25" (6mm) of vertical adjustment on each universal display adaptor bracket for post-installation leveling and height adjustment fine-tuning



SF660 shown

**1. HOOK-AND-HANG™
INSTALLATION**

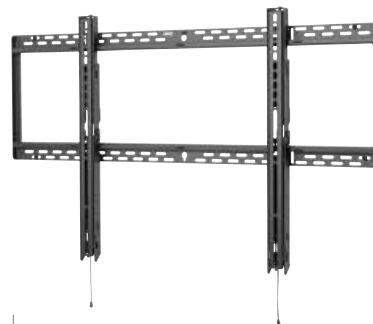
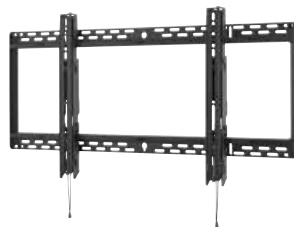
Display is easily installed by a single person

2. LOW-PROFILE DESIGN

Creates an aesthetically appealing look

3. HORIZONTAL & VERTICAL ADJUSTMENT

Post-installation leveling and side-to-side adjustability features allow fine tuning of the mounted display for the perfect positioning



SF660(P)

SF670(P)

SF680(P)

SFP680

Display Size
39" to 80"

Display Size
46" to 90"

Display Size
60" to 98"

Display Size
46" to 90"

Max Load
200lb (91kg)

Max Load
250lb (113kg)

Max Load
350lb (158kg)

Max Load
350lb (158kg)

Mounting Pattern
824 x 405mm
(32.44"W x 15.95"H)

Mounting Pattern
895 x 450mm
(35.25"W x 17.72"H)

Mounting Pattern
1100 x 650mm
(43.29"W x 25.59"H)

Mounting Pattern
494 x 650mm
(19.45"W x 25.59"H)

Distance From Wall
1.20" (30mm)

Distance From Wall
1.73" (44mm)

Distance From Wall
1.73" (44mm)

Distance From Wall
1.70" (43mm)

Metal Stud Accessory
ACC415

Metal Stud Accessory
ACC615

Metal Stud Accessory
ACC615

Metal Stud Accessory
ACC615

- Offers horizontal adjustment for centering display on wall

- Lateral display adjustment and 1" of post-installation vertical adjustment

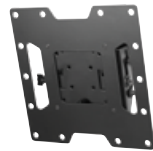
- Adaptor rail latching feature securely locks the display in place with an audible click

- Designed for mounting a display in portrait orientation

SMARTMOUNT®

Tilt Wall Mounts

SmartMount® Tilt Wall Mounts offer tilt adjustment without the use of tools. Various tilt mechanisms, including One-Touch™ and Increlok™, allow just the right range of adjustment to ensure a proper viewing angle. The Tilt Wall Mounts also offer both horizontal and vertical adjustment.

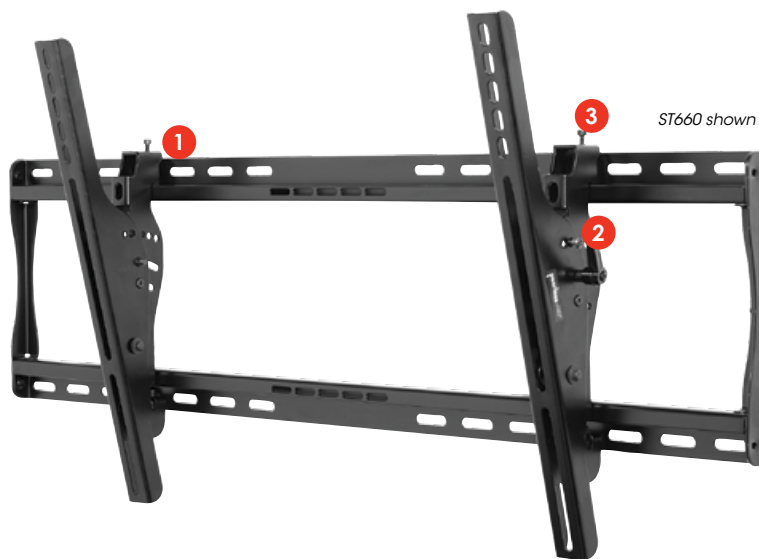


ST630(P)	ST632(P)	ST640(P)	ST650(P)
Display Size 10" to 29"	Display Size 22" to 43"	Display Size 32" to 50"	Display Size 39" to 75"
Max Load 80lb (36kg)	Max Load 115lb (52kg)	Max Load 150lb (68kg)	Max Load 175lb (79kg)
VESA® Pattern 75 and 100mm	VESA® Pattern 75, 100, 200 x 100 and 200 x 200mm	Mounting Pattern 458 x 405mm (18.02"W x 15.95"H)	Mounting Pattern 742 x 405mm (29.21"W x 15.95"H)
Distance From Wall 1.58"-2.23" (40-57mm)	Distance From Wall 1.65"-2.82" (42-72mm)	Distance From Wall 2.62"-5.40" (67-137mm)	Distance From Wall 2.62"-5.40" (67-137mm)
Tilt +15°/-5°	Tilt +15°/-5°	Tilt +15°/-5°	Tilt +15°/-5°
Metal Stud Accessory ACC215	Metal Stud Accessory ACC215	Metal Stud Accessory ACC415	Metal Stud Accessory ACC415

- Display adaptor simply slides into the wall plate for quick and easy installation

- Easy-Grip™ ratcheting handle locks tilt angle into place

- Offer up to 0.25" (6mm) of vertical adjustment on each universal display adaptor bracket for post-installation leveling and height adjustment fine-tuning



ST660 shown

1. HOOK-AND-HANG™ INSTALLATION
 Display is easily installed by a single person

2. INCRELOK™ TILT TECHNOLOGY
 Lock the tilt angle for the perfect view and prevent tampering or undesired adjustment

3. HORIZONTAL & VERTICAL ADJUSTMENT
 Post-installation leveling and side-to-side adjustability features allow fine tuning of the mounted display for the perfect positioning



osthpd

ST660(P)	ST670(P)	ST680(P)	STP680
Display Size 39" to 80"	Display Size 46" to 90"	Display Size 60" to 98"	Display Size 46" to 90"
Max Load 200lb (91kg)	Max Load 250lb (113kg)	Max Load 350lb (158kg)	Max Load 350lb (158kg)
Mounting Pattern 824 x 405mm (32.44"W x 15.95"H)	VESA® Pattern 895 x 450mm (35.25"W x 17.72"H)	Mounting Pattern 1061 x 650mm (41.76"W x 25.59"H)	Mounting Pattern 455 x 650mm (17.91"W x 25.59"H)
Distance From Wall 2.62"-5.40" (67-137mm)	Distance From Wall 3.00"-6.63" (76-168mm)	Distance From Wall 3.38"-10.58" (86-269mm)	Distance From Wall 3.38"-10.58" (86-269mm)
Tilt +15°/-5°	Tilt +15°/-5°	Tilt +15°/-5°	Tilt +15°/-5°
Metal Stud Accessory ACC415	Metal Stud Accessory ACC615	Metal Stud Accessory ACC615	Metal Stud Accessory ACC615

- Included IncreLoK™ feature offers fixed tilt lock in 5° increments when used

- Adjustable up to 15° of forward tilt and -5° of backward tilt with optional IncreLoK™ feature

- Adaptor rail latching feature securely locks the display in place with an audible click

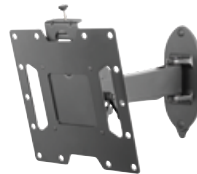
- Lateral display adjustment and 1" of post-installation vertical adjustment

- Designed for mounting a display in portrait orientation

SMARTMOUNT®

Pivot & Pull-Out Pivot Wall Mounts

With SmartMount® Pivot and Pull-out Pivot Wall Mounts, displays can be extended, turned, and tilted to achieve the perfect viewing angle. The pull-out functionality is ideal for in-wall or recessed applications.

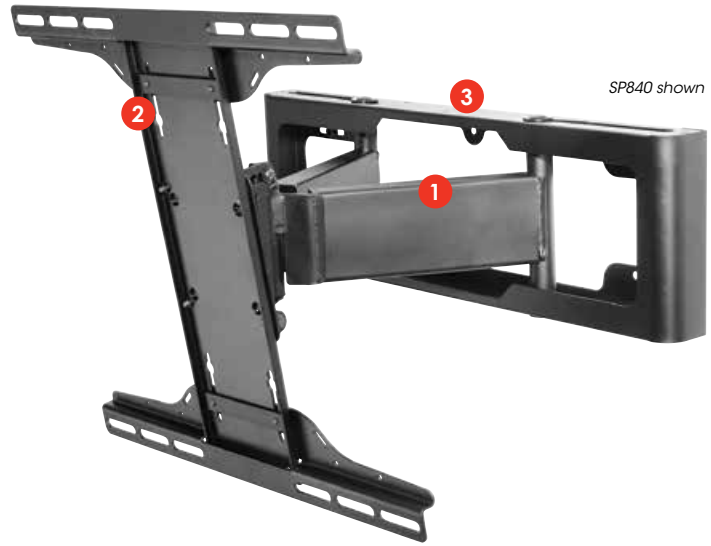


SP730P	SP740P	SP746PU
Display Size 10" to 29"	Display Size 22" to 43"	Display Size 32" to 50"
Max Load 25lb (11kg)	Max Load 80lb (36kg)	Max Load 80lb (36kg)
VESA® Pattern 75 and 100mm	VESA® Pattern 100 x 100, 200 x 100 and 200 x 200mm	Mounting Pattern up to 400 x 400mm (15.75"W x 15.75"H)
Distance From Wall 2.77"-9.88" (70-251mm)	Distance From Wall 3.03"-12.41" (77-315mm)	Distance From Wall 3.46"-12.84" (88-326mm)
Tilt Swivel Roll ±35° ±90° ±5°	Tilt Pivot Roll +15°/-5° ±90° ±5°	Tilt Pivot Roll +15°/-5° ±90° ±5°
Metal Stud Accessory WSP700/WSP701	Metal Stud Accessory WSP700/WSP701	Metal Stud Accessory WSP700/WSP701

- ±90° of pivot allows for perfect display positioning
- One-Touch™ tilt offers ±35° of viewing angle adjustment

- ±90° of pivot allows for perfect display positioning
- One-Touch™ tilt mechanism allows adjustment of +15°/-5° without the use of tools

- ±0.5" (13mm) of vertical adjustment for post-installation height adjustment fine-tuning



1. PULL-OUT SERVICE ACCESS

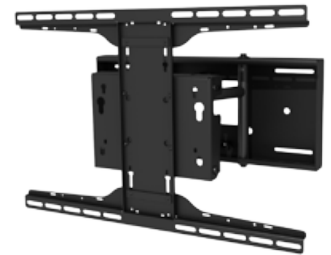
Provides easy access to the back of the display for maintenance

2. I-SHAPED ADAPTOR PLATE

Helps avoid blocking connections on back of display

3. AUTO CENTERING

Extended or retracted, the display remains centered on the mount



SP840

Display Size
32" to 55"

Max Load
60lb (27kg)

Mounting Pattern
400 x 400mm
(15.75"W x 15.75"H)

Distance From Wall
2.51"-11.43" (64-290mm)

Tilt | Pivot | Roll
0°, 3.3°, 6.6° or 10° | ±30° | ±1°

Metal Stud Accessory
ACC415

SP850(P)

Display Size
32" to 80"

Max Load
150lb (68kg)

VESA® Pattern
100 x 100 and 200 x 100mm

Distance From Wall
2.31"-10.68" (59-271mm)

Tilt | Pivot | Roll
0°, 5° or 10° | ±45° | ±1°

Metal Stud Accessory
WSP816/820/824

SP850-UNL(P)

Display Size
32" to 80"

Max Load
150lb (68kg)

Mounting Pattern
600 x 400mm
(23.62"W x 15.75"H)

Distance From Wall
2.73"-11.18" (69-284mm)

Tilt | Pivot | Roll
0°, 5° or 10° | ±45° | ±1°

Metal Stud Accessory
-

- Adjustable latching mechanism controls the tension required to close mount against wall

- Easy pull-out pivot provides quick maintenance access

- Ideal in applications where display needs to be recessed into wall

SMARTMOUNT®

Articulating Wall Mounts

Fully-equipped with exceptional functionality and a stylish appearance, the SmartMount® Articulating Wall Mounts have been perfectly redesigned. Full-motion capabilities allow you to pivot, tilt, extend or retract the display for the ideal viewing angle.



os**h**pd

SA730P

Display Size
10" to 29"

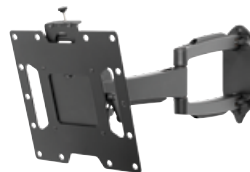
Max Load
25lb (11kg)

VESA® Pattern
75 and 100mm

Distance From Wall
2.77"-16.99" (70-432mm)

Tilt | Pivot | Roll
±35° | ±90° | ±5°

Metal Stud Accessory
WSP700/WSP701



os**h**pd

SA740P

Display Size
22" to 43"

Max Load
80lb (36kg)

VESA® Pattern
100 x 100, 200 x 100 and 200 x 200mm

Distance From Wall
3.03"-21.80" (77-554mm)

Tilt | Pivot | Roll
+15°/-5° | ±90° | ±5°

Metal Stud Accessory
WSP700/WSP701



os**h**pd

SA746PU

Display Size
32" to 50"

Max Load
80lb (36kg)

Mounting Pattern
up to 400 x 400mm
15.75"W x 15.75"H

Distance From Wall
3.46"-22.22" (88-564mm)

Tilt | Pivot | Roll
+15°/-5° | ±90° | ±5°

Metal Stud Accessory
WSP700/WSP701

- ±90° of pivot allows for perfect display positioning

- One-Touch™ tilt offers ±35° of viewing angle adjustment

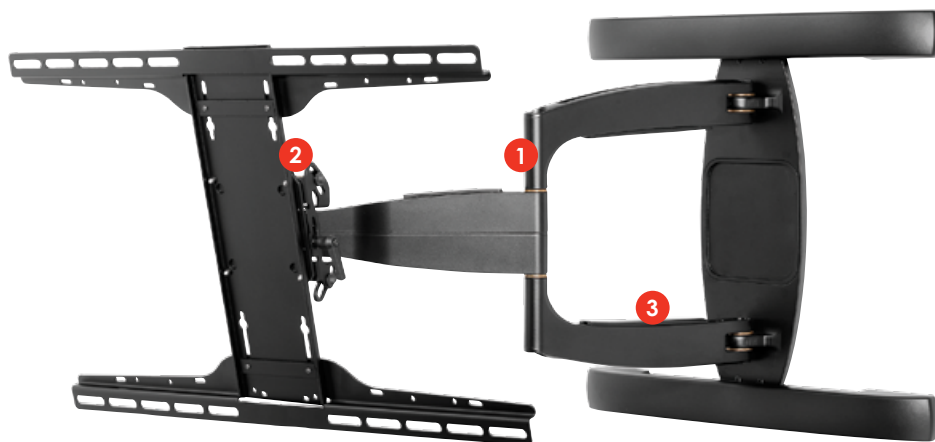
- ±90° of pivot allows for perfect display positioning

- One-Touch™ tilt mechanism allows adjustment of +15°/-5° without the use of tools

- ±0.5" (13mm) of vertical adjustment for post-installation height adjustment fine-tuning



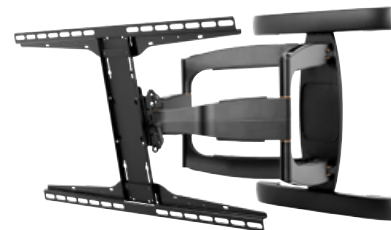
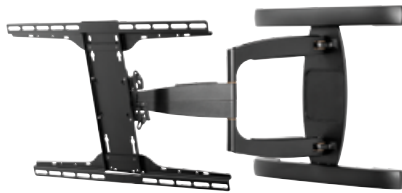
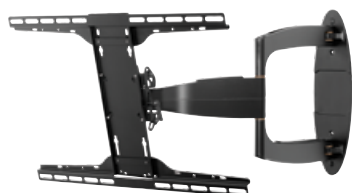
SA761PU shown



1. EXTENDS UP TO 26.60" (676mm)
Offers the perfect viewing angle

2. POST-INSTALLATION HEIGHT ADJUSTMENT
±0.5" (13mm) of vertical adjustment fine tunes positioning of display after installation

3. INTEGRATED CABLE MANAGEMENT
Protects, contains and conceals cables for a clean, professional installation



SA752PU	SA761PU	SA771PU
Display Size 37" to 55"	Display Size 39" to 75"	Display Size 46" to 90"
Max Load 90lb (42kg)	Max Load 125lb (57kg)	Max Load 150lb (68kg)
Mounting Pattern 600 x 400mm (23.62"W x 15.75"H)	Mounting Pattern 600 x 400mm (23.62"W x 15.75"H)	Mounting Pattern 800 x 400mm (31.50"W x 15.75"H)
Distance From Wall 2.97"-26.47" (75-672mm)	Distance From Wall 3.10"-26.60" (79-676mm)	Distance From Wall 3.10"-26.60" (79-676mm)
Tilt Pivot Roll +15°/-5° ±90° ±5°	Tilt Pivot Roll +15°/-5° ±90° ±5°	Tilt Pivot Roll +15°/-5° ±90° ±5°
Metal Stud Accessory WSP756	Metal Stud Accessory WSP756	Metal Stud Accessory WSP756

- Integrated Cable Management protects, contains, and conceals cables for a clean, professional installation

- Landscape or portrait mounting options increases display versatility



- The I-Shaped Adaptor plate's innovative design helps avoid blocking connections on back of display



For over 75 years, passion and innovation continue to drive Peerless-AV® forward.

We proudly design and manufacture the highest quality products, ranging from outdoor displays to complete kiosk solutions, digital signage mounts to wireless systems. Whether a full-scale global deployment or custom project, Peerless-AV develops meaningful relationships and delivers world-class service. In partnership with Peerless-AV, you are trusting an award-winning team of experts who will support your business every step of the way.

For more information, visit peerless-av.com.

 peerless-av.com
 800-865-2112