

**VESA mount accessory PV02 –
for 3 litre Slim PCs**

Its optional VESA75/100 wallmount allows compatible Shuttle Slim-PCs of the 3-litre class to be installed on to walls or just affixed on the rear side of a monitor which is particularly interesting for the industry segment, company buildings and public institutions.

**Shuttle Accessory
PV02**



Feature Highlight	
Scope of delivery	<ul style="list-style-type: none"> VESA mount 2 screws
Material	<ul style="list-style-type: none"> Metal, black
Dimensions	<ul style="list-style-type: none"> approx. 22 x 10 x 8 cm WHD (without mounting screw)
Compatibility	<ul style="list-style-type: none"> Compatible with Shuttle Slim PCs XG41, XH61, XH61V, XH81, XH81V, XH97V, XH110, XH110V, XH170V, XH270, XC60J Supports 75 and 100mm VESA standards



8 11686 00553 7
Article number: PV02



Mounting screw

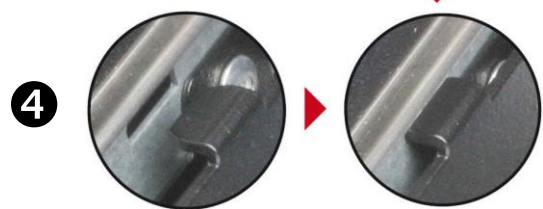
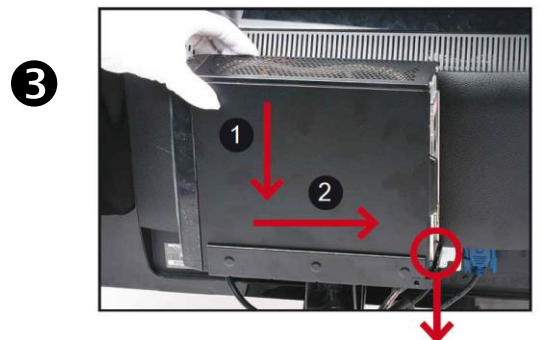
Images for illustration purposes only.

VESA Mount (PV02) – Quick Installation Guide

Please install with reference to the following steps:

Due to safety reasons, please turn off your computer completely first and unplug it from the power supply.

- ❶ Please unpack the PV02 VESA mount accessory and two screws.
- ❷ Fasten the VESA MOUNT at rear of LCD monitor with two screws.
- ❸ As shown, install the Slim PC in the VESA MOUNT and push it towards the direction as indicated by the red arrow.
- ❹ Slide the latch into the lock position.
- ❺ Check that it is properly aligned, then tighten securely with one thumbscrew.



©2009 by Shuttle Computer Handels GmbH (Germany). All information subject to change without notice. Pictures for illustration purposes only.