

PHILIPS

IPL hair removal
system

Lumea Precision

For use on body, face

15 minutes to treat lower legs

Lifetime >100,000 light pulses

Cordless design



SC2002/00



Prevent hair regrowth

To enjoy smooth skin every day on face and body

Philips Lumea IPL hair removal system works wonders to prevent the reappearance of hair all over the body. Gentle pulses of light, applied regularly, keep skin silky-smooth every day.

Long lasting smoothness

- Enjoy smooth skin every day
- Effortlessly effective

Hair removal with IPL technology

- Adapted for safe use in the comfort of your own home
- Suitable hair and skin types

Gentle and effective application for face and body

- Even on sensitive skin and sensitive body areas
- Specially designed to provide extra protection for the face
- Application areas

Maximum freedom, minimum hassle

- Cordless convenience
- No replacement parts needed



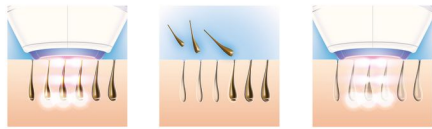
asimpleswitch.com



asimpleswitch.com

Highlights

Long lasting smoothness



Philips Lumea applies gentle pulses of light to the hair root. This results in the hair shedding naturally and hair regrowth is inhibited. Repeating this treatment regularly will keep your skin smooth everyday.

Effortlessly effective



Our clinical studies have shown significant hair reduction in as little as two bi-weekly treatments, with optimal hair-free results achieved after four to five bi-weekly treatments. To maintain these results, simply repeat treatment every four to six weeks. Time between treatments may vary based on your individual hair regrowth.

IPL technology



Philips Lumea uses an innovative light-based technology called IPL (Intense Pulsed Light), derived from the technology used in professional beauty salons. Philips has adapted this technology for safe and effective use in the comfort of your own home. Philips worked closely with leading dermatologists to develop our breakthrough hair removal system.

For more than 10 years we carried out extensive consumer research with more than 1500 volunteers.

Safe and gentle application



Philips Lumea has five adjustable light energy settings to ensure gentle but effective treatment. Used correctly, Philips Lumea's IPL treatment is safe and gentle to use even on sensitive skin and sensitive body areas. The treatment time and battery recharge frequency depends on chosen energy setting and the application area.

Cordless convenience



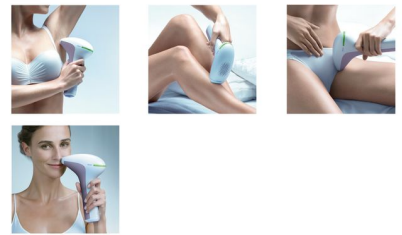
Lumea's unique cordless design is perfect for treating the areas you want, when you want.

No replacement parts needed



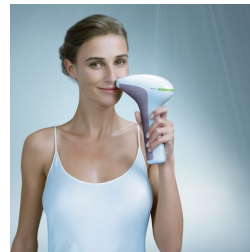
Philips Lumea is a complete solution that comes ready to work straight out of the box. More importantly, it does not require any replacement lamps or gels.

Application areas



Use with confidence to remove hair on face (upper lip, chin and sideburns) and body parts including legs, underarm, bikini area, stomach and arms.

Designed for face and body



The precision attachment is specially designed for facial application. It includes an extra integrated light filter that provides additional protection for the face. The smaller application area is convenient for use on the upper lip and other hard-to-reach areas.



asimpleswitch.com

Philips Green Logo

Philips Green Products can reduce costs, energy consumption and CO2 emissions. How? They offer a significant environmental improvement in one or more of the Philips Green Focal Areas — Energy efficiency, Packaging, Hazardous substances, Weight, Recycling and disposal and Lifetime reliability.

Specifications

Technical specifications

High performance lamp: Delivers > 80,000 flashes

Application areas

Body areas: Legs, Arms, Underarms, Belly, Bikini

Face areas: Upper lip, Chin, Sideburns

Attachments

Body attachment (3 cm²): For use below the neckline

Precision attachment (2 cm²): For safe application on face

Items included

Charger: Multi voltage charger

Instructions for use: Demo DVD, Quick Start Guide, User manual

Storage: Beauty case

Power

Charging time: 100 min

Running time: Min. 320 flashes

Voltage: 100-240 V

Safety and adjustable settings

Integrated UV filter: Protects skin from UV light

5 light energy settings: Adjustable to your skin type

Integrated safety system: Prevent unintentional flashing

Service

Warranty: 2 years global warranty

Application time

Underarm: 1 min

Bikini line: 1 min

Face areas: 1 min

Lower leg: 8 min

Application mode

Corded / cordless use: Cordless

Step and Flash: For treatment on curvy areas

