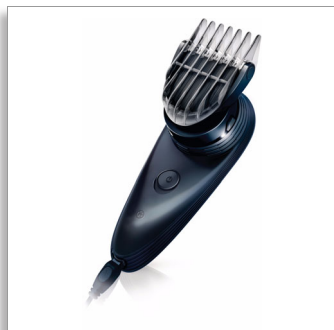




Philips Norelco  
do it yourself hair clipper

**180° rotating head**  
corded use only



QC5510/65

## Cut your own hair

Even in hard-to-reach-areas

A perfectly smooth and precisely shaved head with the Philips Norelco do-it-yourself hair clipper.

**Shave or trim. Perfect results without help.**

- 180° rotating head for 100% reach
- Range of length settings from 3 to 15mm
- Adjustable zoom ring for easy length settings
- Contour-following combs for speed and comfort
- Skin-friendly blades and combs are gentle to the skin
- Efficient Power System: corded use
- Self-sharpening blades
- Lubrication for life

**PHILIPS**  
**NORELCO**

Do it yourself hair clipper  
180° rotating head corded use only

QC5510/65

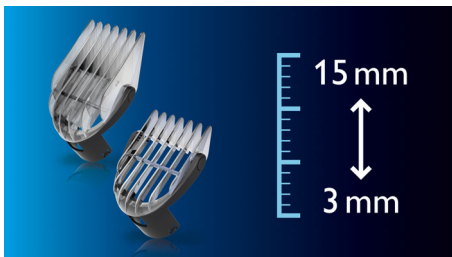
# Highlights

## 180° rotating head



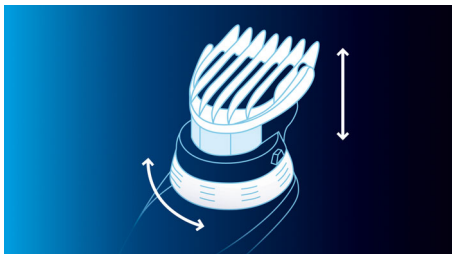
Makes trimming or shaving your own head easier than ever. Simply select the right angle to comfortably reach all parts of your head without help.

## Length settings from 3-15mm



Cut your own hair easily and accurately to lengths between 3 and 15mm.

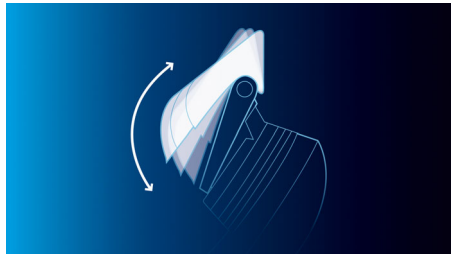
## Adjustable zoom ring



Easily select and set your desired hair length by turning the integrated zoom ring. The length

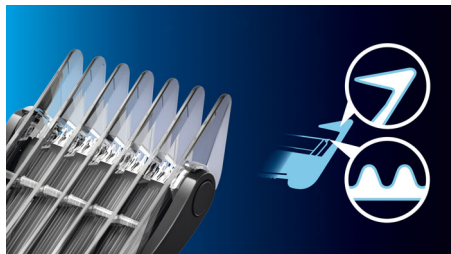
settings are clearly visible on the side of the combs.

## 2D Contour-following comb



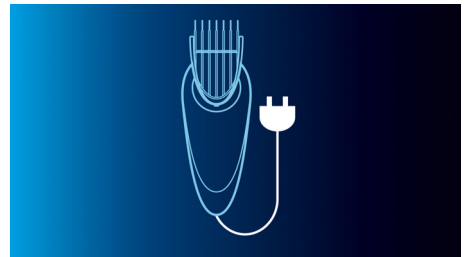
The 2D combs gently follow the contours of your head for a smooth, even and comfortable hair cut.

## Skin-friendly



Rounded edges on the blades and combs are designed to avoid scratching the skin for a more comfortable experience.

## Corded use



Constant power for an efficient, quick and convenient hair cut.

## Self-sharpening blades



The self-sharpening, stainless steel blades stay sharp longer and ensure top cutting performance.

## Lubrication for life



No need for oil maintenance.

# Specifications

## Cutting system

- Cutter width: 41 mm
- Number of length settings: 8
- Range of length settings: from 3 to 15 mm
- Precision (size of steps): by 2 mm
- Self-sharpening stainless steel blades
- Cutting element: Stainless steel blades
- Comb type: Contour following
- Small comb (3 to 15 mm)

## Ease of use

- Zoomring
- Maintenance free - No Oil need
- Adjustable guide combs

## Power system

- Usage: Corded only

## Design

- Shape: Ergonomic

## Accessories

- Cleaning brush

## Service

- 2-year worldwide guarantee



Issue date 2014-03-17

Version: 10.6.1

© 2014 Koninklijke Philips N.V.  
All Rights reserved.

Specifications are subject to change without notice.  
Trademarks are the property of Koninklijke Philips N.V.  
or their respective owners.

[www.philips.com](http://www.philips.com)