

**PHILIPS**

AC0850



**User manual**

# Contents

<b>1</b>	<b>Important</b> .....	<b>2</b>
	Safety .....	2
<b>2</b>	<b>Your air purifier</b> .....	<b>3</b>
	Product Overview .....	3
	Controls Overview .....	4
<b>3</b>	<b>Using the air purifier</b> .....	<b>4</b>
	Understanding the air quality light .....	4
	Installing the filter .....	5
	Understanding Wi-Fi indicator .....	5
	Wi-Fi connection .....	5
	Connecting power .....	6
	Turning on and off .....	6
	Changing the mode setting .....	6
<b>4</b>	<b>Cleaning</b> .....	<b>7</b>
	Cleaning schedule .....	7
	Cleaning the body of the air purifier .....	7
	Cleaning the air quality sensor .....	7
	Cleaning the surface of the filter .....	8
<b>5</b>	<b>Replacing the filter</b> .....	<b>8</b>
	Understanding the healthy air protect lock .....	8
	Replacing the filter .....	8
	Filter reset .....	9
<b>6</b>	<b>Storage</b> .....	<b>9</b>
<b>7</b>	<b>Troubleshooting</b> .....	<b>9</b>
<b>8</b>	<b>Notices</b> .....	<b>11</b>
	Electromagnetic fields (EMF) .....	11
	Recycling .....	11
<b>9</b>	<b>Warranty and support</b> .....	<b>11</b>
	Order parts or accessories .....	11

# 1 Important

---

## Safety

Read this user manual carefully before you use the appliance, and save it for future reference. To ensure the best performance, kindly suggest your purifier is upgraded to the latest version. You can do this upgrade via the Air+ app.

### Danger

- Do not clean the appliance with water, any other liquid, or a (flammable) detergent to avoid electric shock and/or a fire hazard.
- Do not spray any flammable materials such as insecticides or fragrance around the appliance.

### Warning

- Check if the voltage indicated on the appliance corresponds to the local power voltage before you connect the appliance.
- If the power cord is damaged, you must have it replaced by Philips, a service center authorized by Philips, or similarly qualified persons in order to avoid a hazard.
- Do not use the appliance if the adapter, the power cord, or the appliance itself is damaged.
- Only use the approved adapter provided with the appliance.
- This appliance can be used by children aged from 8 years and above and persons with reduced physical, sensory or mental capabilities or lack of experience and knowledge if they have been given supervision or instruction concerning use of the appliance in a safe way and understand the hazards involved.
- Children shall not play with the appliance.
- Cleaning and maintenance shall not be made by children without supervision.
- Do not block the air inlet and outlet, e.g. by placing items on the air outlet or in front of the air inlet.
- Make sure that foreign objects do not fall into the appliance through the air outlet.
- Standard WiFi interface based on 802.11b/g/n/ax at 2.4GHz with a maximum output power of 64mW EIRP.
- Bluetooth version 5.2 (LE) at frequency 2.4 GHz with RF output less than 10mW EIRP.

### Caution

- This appliance is not a substitute for proper ventilation, regular vacuum cleaning, or use of an extractor hood or fan while cooking.
- Always place and use the appliance on a dry, stable, level, and horizontal surface.
- Leave at least 20cm free space around the appliance and leave at least 30cm free space above the appliance.
- Do not sit or stand on the appliance. Do not place anything on top of the appliance.
- Do not place the appliance directly below an air conditioner to prevent condensation from dripping onto the appliance.
- Only use the original Philips filters specially intended for this appliance. Do not use any other filters.
- Combustion of the filter may cause irreversible human hazard and/or jeopardize other lives. Do not use the filter as fuel or for similar purpose.
- Avoid knocking against the appliance (the air inlet and outlet in particular) with hard objects.
- Do not insert your fingers or objects into the air outlet or the air inlet to prevent physical injury or malfunctioning of the appliance.
- Do not use this appliance when you have used indoor smoke-type insect repellents or in places with oily residues, burning incense, or chemical fumes.
- Do not use the appliance near gas appliances, heating devices or fireplaces.
- Always turn off the air purifier first, then unplug adapter from wall outlet, when you want to moving, cleaning appliance, replacing the filters or carry out other maintenance.

- The appliance is only intended for household use under normal operating conditions.
- Do not use the appliance in wet surroundings or in surroundings with high ambient temperatures, such as the bathroom, toilet, or kitchen, or in a room with major temperature changes.
- The appliance does not remove carbon monoxide (CO) or radon (Rn). It cannot be used as a safety device in case of accidents with combustion processes and hazardous chemicals.

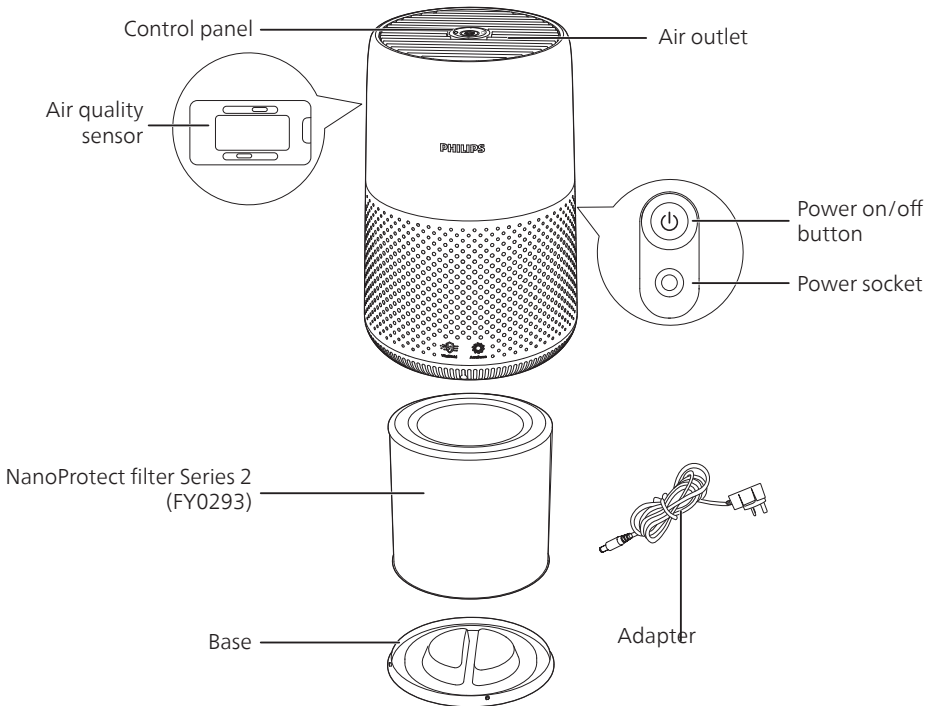
## 2 Your air purifier

Congratulations on your purchase, and welcome to Philips!

To fully benefit from the support that Philips offers, register your product at [www.philips.com/support](http://www.philips.com/support).

---

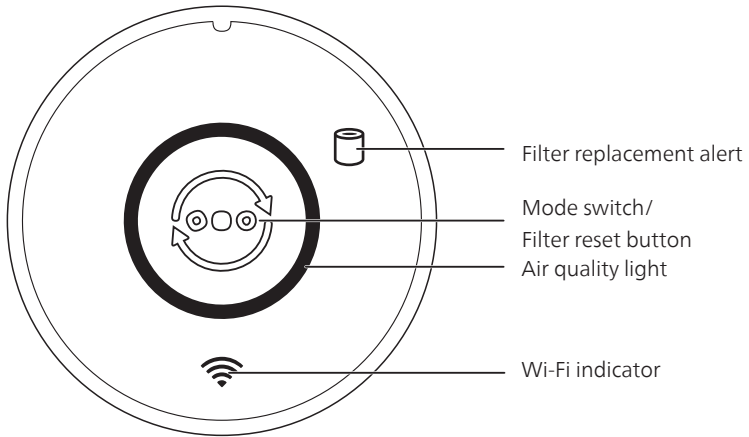
### Product Overview



\*Please use only the adapter provided.

---

## Controls Overview



## 3 Using the air purifier

---

### Understanding the air quality light

The color of air quality light corresponds to the ambient air quality.  
The brightness of air quality light reflects the current running mode.

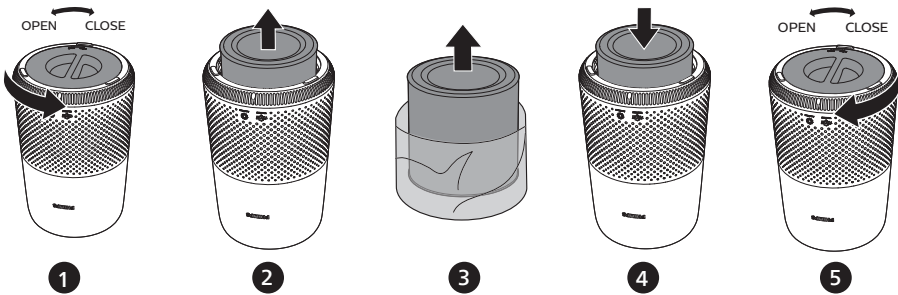
PM2.5 level	Air quality light color	Air quality level
≤12	Blue	Good
13-35	Blue-purple	Fair
36-55	Purple-red	Poor
>55	Red	Very poor

---

## Installing the filter

Remove all packaging of the filter before use.

**Note:** Make sure the air purifier is unplugged from the electrical outlet before installing the filter.



- 1 Rotate the base anti-clockwise to remove it from the appliance.
- 2 Pull the filter out from the appliance.
- 3 Remove all packaging materials of the air purification filter.
- 4 Put the filter back into the appliance.
- 5 Reattach the base and rotate it clockwise to fasten the base.

---



## Understanding Wi-Fi indicator

Wi-Fi icon status	Wi-Fi connection status
Blink in orange	Connecting to the smartphone
Stable in orange	Connected to the smartphone
Blink in white	Connecting to the server
Stable in white	Connected to the server
Off	Wi-Fi function disabled

---

## Wi-Fi connection

### Setting up the Wi-Fi connection for the first time

- 1 Download and install the Philips **"Air+"** app from the **App Store** or **Google Play**.
- 2 Put the plug of the air purifier in the power socket and press  to turn on the air purifier.  
↳ The Wi-Fi indicator  blinks orange for the first time.
- 3 Make sure that your smartphone or tablet is successfully connected to your Wi-Fi network.
- 4 Launch the Philips **"Air+"** app and click on **"Connect a New Device"** or press the **"+"** button on the top of the screen. Follow the onscreen instructions to connect the air purifier to your network.






**Note:**

- This instruction is only valid when the air purifier is being set up for the first time. If the network has changed or the setup needs to be performed again, see Chapter "Reset the Wi-Fi connection" on page 6.
- If you want to connect more than one air purifier to your smartphone or tablet, you have to do this one by one.
- Make sure that the distance between your smartphone or tablet and the air purifier is less than 10 m without any obstructions.

---

## Reset the Wi-Fi connection

**Note:**

- Reset the Wi-Fi connection when your default network has changed.
- 1 Put the plug of the air purifier in the power socket and press  to turn on the air purifier.
  - 2 Press  for 3 seconds until you hear a beep.
    - ↳ The air purifier goes to pairing mode.
    - ↳ The Wi-Fi indicator  blinks orange.
  - 3 Follow the steps 3-4 in "Setting up the Wi-Fi connection for the first time" section.

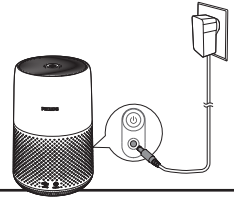
---

## Connecting power

**Note:** Risk of electric shock! When you unplug the AC power cord, always pull the plug from the socket. Never pull the cord.

Connect the power adapter to:



- First, the power socket on the appliance.
- Then, the wall outlet.



---


## Turning on and off

**Note:**

- For optimum purification performance, close doors and windows.
- 1 Press the power button  on the back of the air purifier to switch on.
    - ↳ The air purifier operates in the auto mode by default.
  - 2 Press the power button  again to switch off the air purifier.

---

## Changing the mode setting

You can choose Auto mode, Turbo mode or the Sleep mode by pressing the mode switch button . The brightness of air quality light reflects the current running mode:

- Sleep mode-lowest brightness
- Auto mode-mid level brightness
- Turbo mode-highest level brightness

### Auto mode

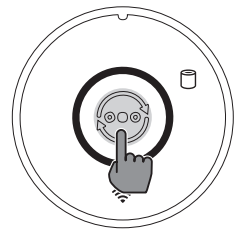
In Auto mode, the appliance selects the fan speed in accordance with the ambient air quality.

### Turbo mode

In Turbo mode, the air purifier operates on the highest speed.

### Sleep mode

In Sleep mode, the air purifier operates quietly at a low speed.



## 4 Cleaning

### Note:

- Never use abrasive, aggressive, or flammable cleaning agents such as bleach or alcohol to clean any part of the appliance.

---

### Cleaning schedule

Frequency	Cleaning method
When necessary	Wipe the surface of the appliance with a soft dry cloth
	Clean the air outlet cover
Every two months	Clean the air quality sensor with a dry cotton swab
Every four weeks	Clean the surface of the filter

---

### Cleaning the body of the air purifier

Regularly clean the inside and outside of the air purifier to prevent dust from collecting.

- 1 Use a soft, dry cloth to clean both the interior and exterior of the air purifier.
- 2 The air outlet can also be cleaned with a dry, soft cloth.

---

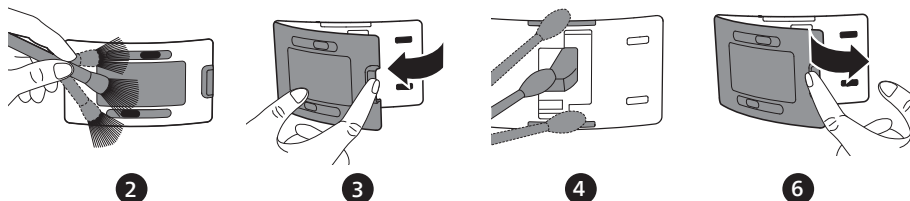
### Cleaning the air quality sensor

Clean the air quality sensor every two months for optimal functioning of the appliance.

### Note:

- If the air purifier is used in a dusty environment, it may need to be cleaned more often.
- If the humidity level in the room is very high, condensation may develop on the air quality sensor and the air quality light may indicate a poorer air quality even though the air quality is actually good. If this occurs, clean the air quality sensor or use the air purifier on a manual speed setting.

- 1 Switch off the air purifier and unplug from the power socket.



- 2 Clean the inlet and outlet of the air quality sensor with a soft brush.
- 3 Open the air quality sensor cover.
- 4 Clean the air quality sensor, the dust inlet and the dust outlet with a damp cotton swab.
- 5 Dry all parts thoroughly with a dry cotton swab.
- 6 Reattach the air quality sensor cover.



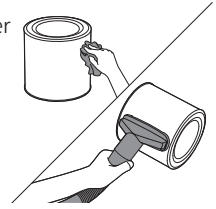
---

## Cleaning the surface of the filter

Wipe the surface of the filter with soft wet cloth or clean the surface of the filter with a vacuum cleaner.

Note:

- if you use a high power/ industrial vacuum cleaner, it may damage the filter.





---

## 5 Replacing the filter

---

### Understanding the healthy air protect lock

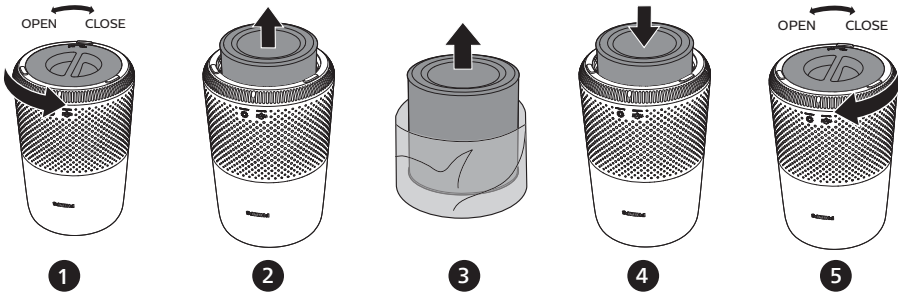
This appliance is equipped with the healthy air protect lock to make sure that the NanoProtect filter is in optimal condition when the appliance is operating. When the filter is almost expired, the filter replacement alert (  ) lights up red, which indicates that it needs to be replaced. If you do not replace the filter in time, the filter replacement alert (  ) will flash. The appliance will stop operating and get locked.



---

### Replacing the filter

Note:

- The filter is not washable or reusable.
- Always turn off the air purifier and unplug from the electrical outlet before replacing the filter.





- 1 Rotate the base anti-clockwise to remove it from the appliance.
- 2 Pull the filter out from the appliance. Discard the used filter.
- 3 Remove all packaging materials of the new filter.
- 4 Put the filter into the appliance.
- 5 Reattach the base and rotate it clockwise to fasten the base.
- 6 Put the plug of the air purifier in the power socket.
- 7 Press the power button  to switch on the appliance.
- 8 Press and hold  for 3 seconds to reset the filter lifetime counter.
- 9 Wash your hands thoroughly after replacing the filter.

---

## Filter reset

You can replace the filter even before filter replacement alert (  ) displays on the screen. After replacing a filter, you need to reset the filter lifetime counter manually.

- 1 Press the power button  to turn on the appliance.
- 2 Within 10 seconds after power on, press and hold the mode switch button  for 5 seconds to reset the filter lifetime counter.

## 6 Storage

- 1 Turn off the air purifier and unplug from the power socket.
- 2 Clean the air purifier, air quality sensor and the surface of the filter (see the chapter “Cleaning”).
- 3 Let all parts air dry thoroughly before storing.
- 4 Wrap the filter in air tight plastic bags.
- 5 Store the air purifier, filter in a cool, dry location.
- 6 Always thoroughly wash hands after handling a filter.



## 7 Troubleshooting

This chapter summarizes the most common problems you could encounter with the appliance. If you are unable to solve the problem with the information below, contact the Consumer Care Center in your country.

---

Problem	Possible solution
The appliance does not work even though it is plugged in.	<ul style="list-style-type: none"><li>• The filter replacement alert is flashing but you have not replaced the corresponding filter. As a result, the appliance is now locked. In this case, replace the filter and reset the filter lifetime counter.</li></ul>
The airflow that comes out of the air outlet is significantly weaker than before.	<ul style="list-style-type: none"><li>• The surface of the filter is dirty. Clean the surface of the filter (see the chapter “Cleaning”).</li></ul>
The air quality does not improve, even though the appliance has been operating for a long time.	<ul style="list-style-type: none"><li>• Check if the packing material is removed from the filter.</li><li>• Make sure that the filter is properly installed.</li><li>• The air quality sensor is dirty or wet. Clean the air quality sensor (See the chapter “Cleaning”).</li><li>• Room size is large or the outdoor air quality is poor. For optimum purification performance, please close the doors and windows when operating the air purifier.</li><li>• There are indoor pollution resources. For instances, smoking, cooking, incense.</li><li>• Filter reaches the end of life. Replace the filter with a new one.</li></ul>

---

Problem	Possible solution
The appliance produces a strange smell.	<ul style="list-style-type: none"> <li>• The first few times you use the appliance, it may produce a plastic smell. This is normal. However, if the appliance produces a burnt smell even if removing the filter, contact your Philips dealer or an authorized Philips service center. The filter may produce smell after being used for a while because of the absorption of indoor gases. It's recommended that you reactivate the filter by putting it in direct sunlight for repeated use. If odor still exists, replace the filter.</li> </ul>
The appliance is extra loud.	<ul style="list-style-type: none"> <li>• Check if the packing of the filter is removed.</li> <li>• The appliance will run in high speed when the air quality is poor, which will causes higher noises. When using the appliance in a bedroom at night, choose the Sleep speed.</li> <li>• if anything drops into air outlet, it may also cause abnormal loud sounds. Immediate turn off appliance, turn appliance upside down, to get foreign objectives out of appliance.</li> </ul>
The appliance still indicates that I need to replace a filter, but I already did.	<ul style="list-style-type: none"> <li>• Perhaps you did not reset the filter lifetime counter. Switch on the appliance. Then press and hold the mode switch button (  ) for 3 seconds until  disappears.</li> </ul>
The Wi-Fi setup is not successful.	<ul style="list-style-type: none"> <li>• If the router your appliance is connected to is dual – band and currently it is not connecting to a 2.4GHz network, please switch to another band of the same router (2.4GHz) and try to pair your purifier again. 5GHz networks are not supported.</li> <li>• Web authentication networks are not supported.</li> <li>• Check if the appliance is within range of the Wi-Fi router. You can try to locate the air purifier closer to the Wi-Fi router.</li> <li>• Check if the network name is correct. The network name is casesensitive.</li> <li>• Check if the Wi-Fi password is correct. The password is casesensitive.</li> <li>• Retry the setup with the instructions in the chapter “Wi-Fi connection”).</li> <li>• The Wi-Fi connectivity can be interrupted by electromagnetic or other interferences. Keep the appliance away from other electronic devices that may cause interferences.</li> <li>• Check if the mobile device is in airplane mode. Make sure to have the airplane mode deactivated when connecting to the Wi-Fi network.</li> <li>• Consult the help section in the app for extensive and up-to-date troubleshooting tips.</li> </ul>
Appliance keeps off, but air quality light blinks for one minute.	<ul style="list-style-type: none"> <li>• The appliance has malfunctions. Contact the Consumer Care Center in your country.</li> </ul>

## 8 Notices

---

### Electromagnetic fields (EMF)

This appliance complies with the applicable standards and regulations regarding exposure to electromagnetic fields.

---

### Recycling

Do not throw away the product with the normal household waste at the end of its life, but hand it in at an official collection point for recycling. By doing this, you help to preserve the environment.

Follow your country's rules for the separate collection of electrical and electronic products. Correct disposal helps prevent negative consequences for the environment and human health.

## 9 Warranty and support

Versuni offers a two-year warranty after purchase on this product. This warranty is not valid if a defect is due to incorrect use or poor maintenance. Our warranty does not affect your rights under law as a consumer. For more information or for invoking the warranty, please visit our website [www.philips.com/support](http://www.philips.com/support).

---

### Order parts or accessories

If you have to replace a part or want to purchase an additional part, go to your Philips dealer or visit [www.philips.com/support](http://www.philips.com/support).

If you have problems obtaining the parts, please contact the Philips Consumer Care Center in your country.



PHILIPS and the Philips Shield Emblem are registered trademarks of Koninklijke Philips N.V. and are used under license.

This product has been manufactured by and is sold under the responsibility of Versuni Holding B.V., and Versuni Holding B.V. is the warrantor in relation to this product.  
2023 © Versuni Holding B.V.

AC0850\_UM\_v1.0 (08/11/2023)

