



Philips

Air purifier

- General health
- Smart sensor

AC4014/00

Healthy air always

Purifier with healthy air protect alert

Breathe healthy air with the Philips air purifier. Its advanced filtration system filters out bacteria, allergens and harmful agents. The Healthy air protect alert assures you of healthy air always.

Benefits

Healthy Air

- With advanced filtration system
- Smart sensor measures and controls the indoor air quality

Always

- Healthy air protect alert warns you when to replace filter

Simplicity

- 3-step light indicators clearly show air quality level
- 3-step fan speed lets you to adjust air flow to your liking
- 1/4/8 hours easy-to-set timer

Features

Advanced filtration system

The advanced filtration system eliminates harmful agents in three stages: In stage 1, the antibacterial pre-filter catches big particles like human hair. In stage 2, the activated carbon filter effectively removes odors and harmful agents. In stage 3, the HEPA filter with its antibacterial coating filters out fine germs and mould.



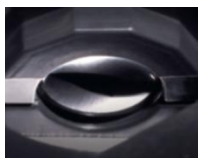
asimpleswitch.com



asimpleswitch.com

PHILIPS

Smart sensor



Smart sensor measures and controls the indoor air quality

3-step fan speed



3-step fan speed lets you to adjust the air flow to your liking

Healthy air protect alert



Healthy air protect alert gives you a timely warning when to replace the filter. When the filter is not replaced in time, the appliance stops functioning to avoid running with no effect since filter is full. It is your assurance of healthy air always.

1/4/8 hours easy-to-set timer



Appliance operates for a set number of hours and automatically switches off when set time has elapsed.

3-step light indicators



3-step light indicators clearly show air quality level: Blue-Good; Purple- Fair; Red- Bad.

Specifications

Please note that this is a pre-sales leaflet. The contents of this leaflet reflect the best of our knowledge per date and country mentioned above. The contents of this leaflet are subject to change without notice. Philips does not accept any liability as to the contents of this leaflet.

Design specifications

Front cover	white
Materials of main body	ABS plastic

Logistic data

12 NC (China)	883 4014 00710
12 NC (Hong Kong)	883 4014 00450
EAN F box (China)	87 1010355285 7
EAN F box (Hong Kong)	87 1010356269 6
Country of origin	China

Weight and dimensions

Product weight	6.1 kg
F-box weight (incl. product)	8.1 kg
Product dimensions (W x D x H)	350 x 196 x 623 mm

F-box dimensions (W x D x H) 440 x 275 x 715 mm
 ** Tested by Shanghai Institute of Measurement and Testing Technology (SIMT) in 30m3 chamber according to GB/T18801-2008, cigarette smoke used as the particle pollutants

*** Tested by SIMT in 30m3 chamber according to GB/T18801-2008 and GB/T18883-2002, inhalable particles of size smaller than 2.5µm as particles pollutants sampled in mass concentration, initial concentration 5.0±0.5mg/m3, testing time 1hr

**** Tested by Shanghai Institute of Measurement and Testing Technology (SIMT) in 30m3 chamber according to GB21551.3-2010, (Staphylococcus albsp) 8032 as testing bacteria

Interactivity

Frequency	50 Hz
Wattage	30 W
Voltage	220-240 V
Cord length	2.3 m
Air quality sensor(s)	particle
Noise level	35 (Lowest speed) - 61 (Highest speed) dB

Performance

CADR (cigarette smoke)	237 m³/h **
Filters out PM2.5	>99% ***
Filters out bacteria	>99.9% ****

Replacement

AC filter	AC4143
HEPA filter	AC4144



data subject to change
2014, July 15

Version: 10.1.1
EAN:

© 2014 Koninklijke Philips Electronics N.V.
All rights reserved.

Specifications are subject to change without notice. Trademarks are the property of Koninklijke Philips Electronics N.V. or their respective owners.

www.philips.com