


# Dell Premier Collaboration Keyboard and Mouse User's Guide


Regulatory model: KB900/MS900/UD2301




# Notes, Cautions, and Warnings

---

 **NOTE:** A NOTE indicates important information that helps you make better use of your device.

 **CAUTION:** A CAUTION indicates potential damage to hardware or loss of data if instructions are not followed.

 **WARNING:** A WARNING indicates a potential for property damage, personal injury, or death.

© 2023 Dell Inc. or its subsidiaries. All rights reserved. Dell, EMC, and other trademarks are trademarks of Dell Inc. or its subsidiaries. Other trademarks may be trademarks of their respective owners.

2023-02

Rev. A00

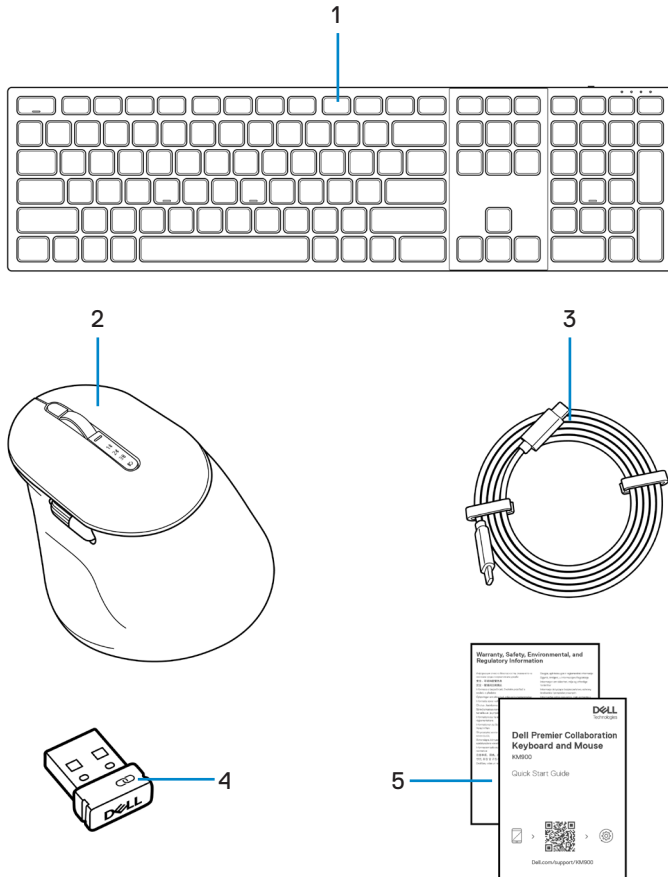
# Contents

What's in the box . . . . .	5
Features . . . . .	6
Keyboard . . . . .	6
Mouse . . . . .	7
Dell Peripheral Manager . . . . .	8
Setting up your wireless keyboard . . . . .	9
Charging the battery . . . . .	9
Low battery indicator colors . . . . .	10
Turning on the wireless keyboard . . . . .	10
Setting up your wireless mouse . . . . .	11
Charging the battery . . . . .	11
Battery indicator colors . . . . .	12
Turning on the wireless mouse . . . . .	12
Pairing your wireless keyboard and mouse . . . . .	13
Download and install the Bluetooth Driver . . . . .	13
Pairing your wireless keyboard and mouse using Dell Pair . . . . .	13
Download and installation . . . . .	14
User interface . . . . .	14
Pairing your wireless keyboard and mouse using Swift Pair . . . . .	16
Pairing your wireless keyboard and mouse using Bluetooth . . . . .	17
Pairing device two using Bluetooth . . . . .	19
Pairing with a Dell Secure Link USB receiver . . . . .	21

- Switching between paired devices. . . . . 23
- Zoom touch controls for the keyboard . . . . . 24**
  - Zoom touch control settings. . . . . 26
- Intelligent backlighting . . . . . 27**
- Changing the scroll-speed on wireless mouse. . . . . 29**
- Troubleshooting . . . . . 30**
- Keyboard specifications . . . . . 35**
  - General . . . . . 35
  - Electrical . . . . . 35
  - Physical characteristics . . . . . 36
  - Environmental . . . . . 36
  - Wireless . . . . . 36
- Mouse specifications . . . . . 37**
  - General . . . . . 37
  - Electrical . . . . . 37
  - Physical characteristics . . . . . 38
  - Environmental . . . . . 38
  - Wireless . . . . . 38
- Statutory Information . . . . . 39**
  - Warranty . . . . . 39**
    - Limited warranty and return policies . . . . . 39
    - For U.S. customers . . . . . 39
    - For European, Middle Eastern and African customers . . . . . 39
    - For non-U.S. customers. . . . . 39

# What's in the box

---



1. Keyboard

3. USB-C to USB-C charging cable

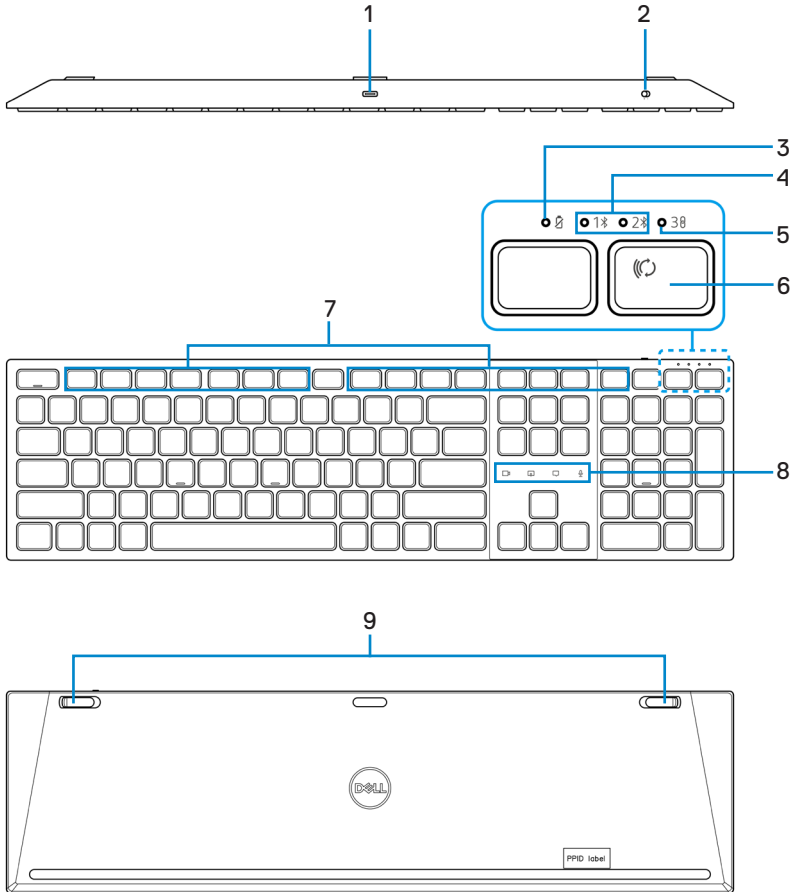
5. Documents

2. Mouse

4. Dell Secure Link USB receiver

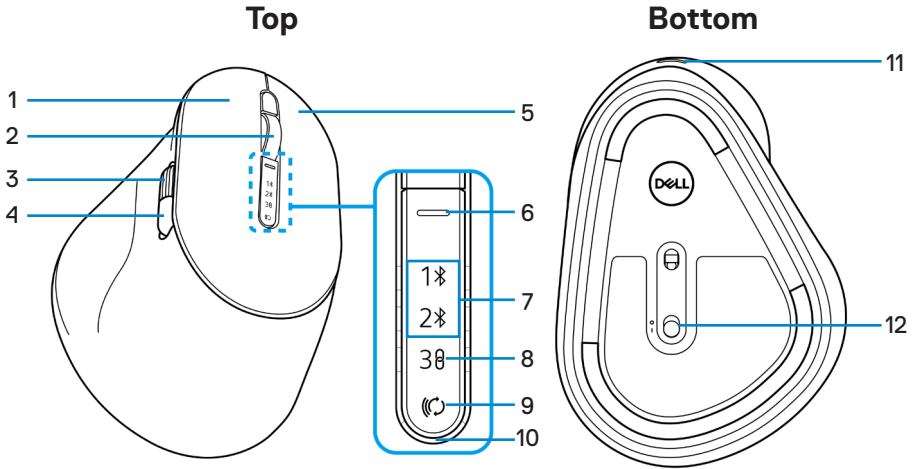
# Features

## Keyboard



- |                                   |                           |
|-----------------------------------|---------------------------|
| 1. USB-C port                     | 2. Power switch           |
| 3. Low battery LED indicator      | 4. Bluetooth modes        |
| 5. RF 2.4 GHz mode (USB receiver) | 6. Connection-mode button |
| 7. Programmable keys              | 8. Zoom touch controls    |
| 9. Adjustable tilt legs           |                           |

# Mouse



- 1. Left button
- 2. Vertical-scroll wheel
- 3. Horizontal-scroll wheel (Default: Forward, programmable with Dell Peripheral Manager)
- 4. Side button (Default: Back, programmable with Dell Peripheral Manager)
- 5. Right button
- 6. Scroll-speed toggle button
- 7. Bluetooth modes
- 8. RF 2.4 GHz mode (USB receiver)
- 9. Connection-mode button
- 10. Low battery LED indicator
- 11. USB-C port
- 12. Power switch

# Dell Peripheral Manager

---

The Dell Peripheral Manager is a software that enables you to set up and manage Dell Peripherals connected to your computer.

For Dell Premier Collaboration Keyboard and Mouse, this software enables you to perform the following:

- Assign actions to programmable keys.
- Change settings of Zoom touch controls (for keyboard only).
- Customise illumination for intelligent backlighting (for keyboard only).
- Set primary mouse button (left or right) (for mouse only).
- Adjust mouse sensitivity through DPI setting (for mouse only).
- View device information such as firmware version and battery status.
- Upgrade to the latest firmware updates.



For more information on Dell Peripheral Manager, visit [www.dell.com/support/dpem](http://www.dell.com/support/dpem)

Download the Dell Peripheral Manager software from the above link. You can find detailed user guide and article on usage and troubleshooting under the documentation tab.





# Setting up your wireless keyboard

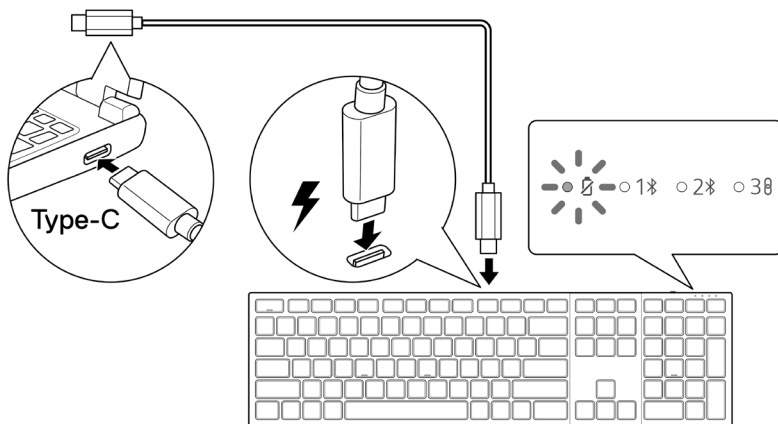
## Charging the battery

**NOTE:** Your wireless keyboard has a rechargeable battery. For best results, ensure that the battery is fully charged before using it for the first time.

**NOTE:** To improve battery life, turn off the power switch when the wireless keyboard is not in use.

Connect one end of the USB-C charging cable to the USB-C port on the keyboard and the other end to an available USB-C port on your desktop, laptop, or compatible mobile device.

The low battery LED indicator starts blinking until the battery is fully charged or the USB-C charging cable is unplugged.




**NOTE:** During charging, the low battery LED indicator will turn on even if the keyboard is turned off.

**NOTE:** The USB-C charging cable can be used only for charging the keyboard. It does not support data transfer.

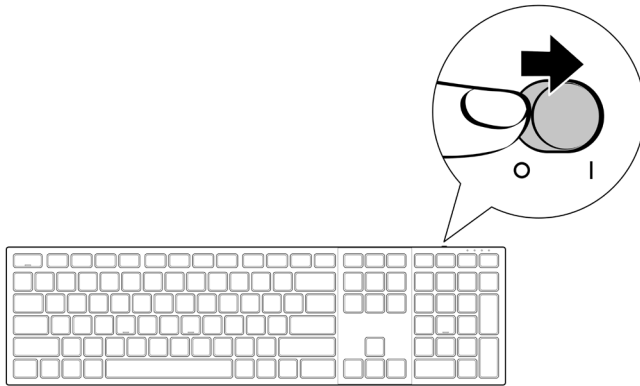
## Low battery indicator colors


- **Low power ( $\leq 5\%$ ):** Amber light breathing in a cycle of 10 seconds on and 50 seconds off.
- **Charging:** Breathing in white.
- **Fully charged:** Static white for 10 seconds and then turns off.

 **NOTE:** The keyboard backlight will turn off when the battery charge drops to the low level ( $\leq 5\%$ ).

## Turning on the wireless keyboard

Push the power switch to the right to turn on the wireless keyboard.



 **NOTE:** Ensure that the distance between your computer and the wireless keyboard is within ten meters.

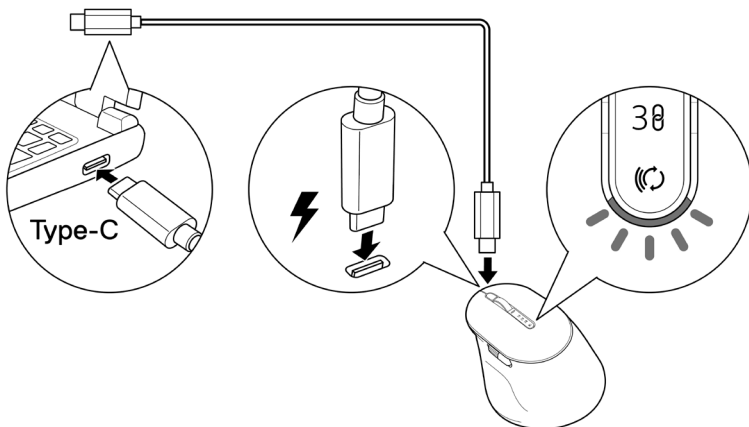
# Setting up your wireless mouse

## Charging the battery

**NOTE:** Your wireless mouse has a rechargeable battery. For best results, ensure that the battery is fully charged before using it for the first time.

**NOTE:** To improve battery life, turn off the power switch when the wireless mouse is not in use.

Connect one end of the USB-C charging cable to the USB-C port on the mouse and the other end to an available USB-C port on your computer, desktop, or compatible mobile device.



The white low battery LED indicator will breathe until the battery is fully charged or the USB charging cable is unplugged.

**NOTE:** During charging, the low battery LED indicator will turn on even if the mouse is turned off.

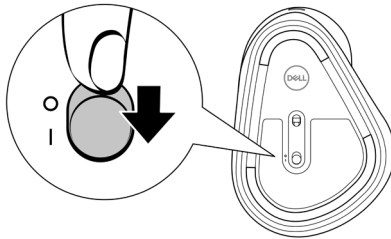
**NOTE:** The USB-C charging cable can be used only for charging the mouse. It does not support data transfer.


## Battery indicator colors

- **Low power ( $\leq 5\%$ ):** Amber pulsing for a period of 5 seconds regardless of the connection status.
- **Normal power ( $> 5\%$ ):** Battery indicator will remain off when mouse is turned on.
- **Charging:** Breathing in white.
- **Fully charged:** Static white for 10 seconds and then dims off.

## Turning on the wireless mouse

Push the power switch down to turn on the wireless mouse.



 **NOTE:** Ensure that the distance between your computer and the wireless mouse is within ten meters.

# Pairing your wireless keyboard and mouse

---

Your Dell wireless keyboard and mouse can be paired with devices using either the Dell Secure Link USB receiver or Bluetooth. You can pair and switch between a laptop, desktop, or any compatible mobile device.

## Download and install the Bluetooth Driver


Bluetooth Drivers come pre-installed on all Dell computers.

To manually download and install wireless Bluetooth Driver, see **Download and install wireless Bluetooth Driver**.

## Pairing your wireless keyboard and mouse using Dell Pair

Dell Pair supports the following:

- Detect Dell peripheral devices like mouse and keyboard when they are within the detection range
- Seamlessly pair devices through Bluetooth

 **NOTE:** Dell Pair user guide is common to all supported Dell peripherals. For features specific to the device, please refer to the product user guide.

# Download and installation

Dell Pair comes pre-installed on selected Dell computers. For more information on the list of Dell Pair compatible devices, see [www.dell.com/support/kbdoc/000201693](http://www.dell.com/support/kbdoc/000201693).

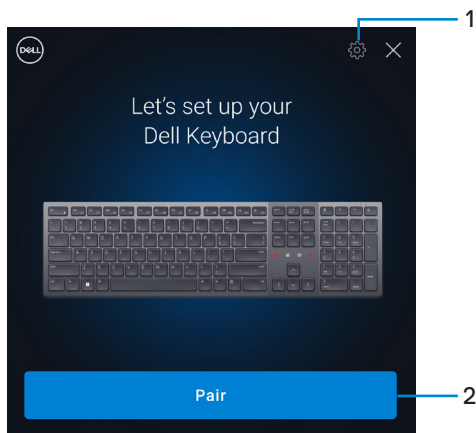
To manually download and install, go to Dell support website:

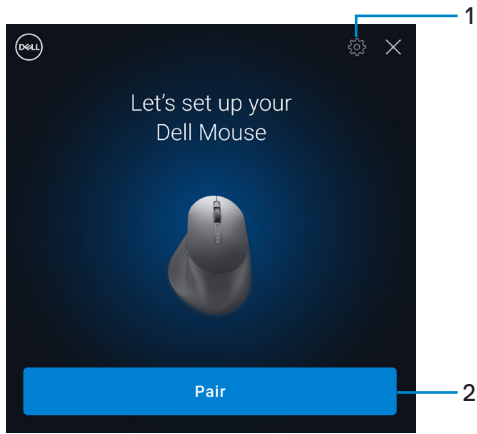
1. Open Dell support home page:  
[www.dell.com/support/dellpair](http://www.dell.com/support/dellpair).
2. In the **Drivers & Downloads** section, download the Dell Pair executable file.
3. Follow the on-screen instructions to complete the installation.

After the installation is complete, “Dell Pair” is available on Windows start menu.

## User interface

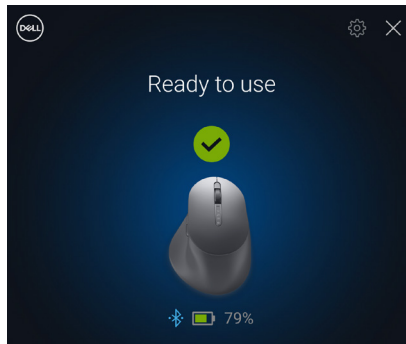
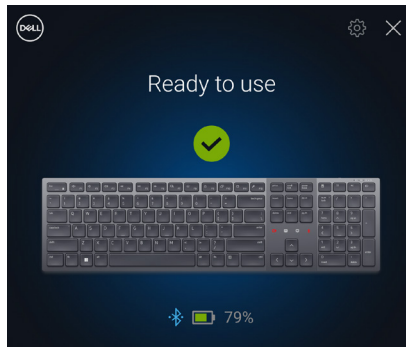
1. Place your wireless keyboard or mouse near your computer. Then press the connection-mode button to switch to the first pairing mode (1⌘).
2. Press the connection-mode button for three seconds. Ensure that the first Bluetooth channel LED (1⌘) blinks white, indicating the Bluetooth pairing is initiated.
3. Dell Pair pops up a notification when a device supporting detection by Dell Pair is turned on and brought close to the Bluetooth detection range of the computer for the first time. Click **Pair** to proceed with seamless pairing of the device using Bluetooth.





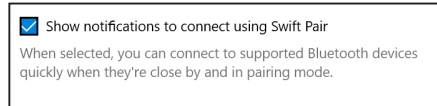
1. Dell Pair settings
2. Pair button to start pairing using Bluetooth

4. After successful pairing, the wireless keyboard or mouse is ready to be used.

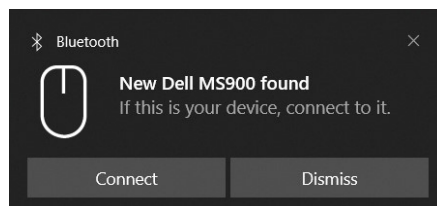
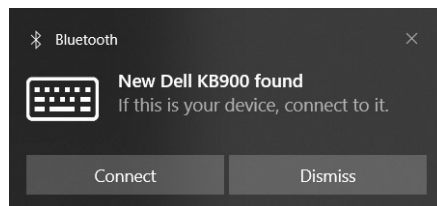


# Pairing your wireless keyboard and mouse using Swift Pair

1. In Windows Search, type Bluetooth.
2. Click **Bluetooth and other devices settings**. The **Settings** window appears.
3. Ensure that the **Show notifications to connect using Swift Pair** check box is selected.




4. Ensure that the Bluetooth is turned on.
5. Place your wireless keyboard and mouse near your computer. Then press the connection-mode button to switch to the first pairing mode (1⌘).
6. Press the connection-mode button for three seconds. Ensure that the first Bluetooth channel LED (1⌘) blinks white, indicating the Bluetooth pairing is initiated.
7. The **New Dell KB900 found** (for keyboard) and **New Dell MS900 found** (for mouse) window appears. Click **Connect** and confirm the pairing process of both wireless keyboard and mouse with your computer.







# Pairing your wireless keyboard and mouse using Bluetooth

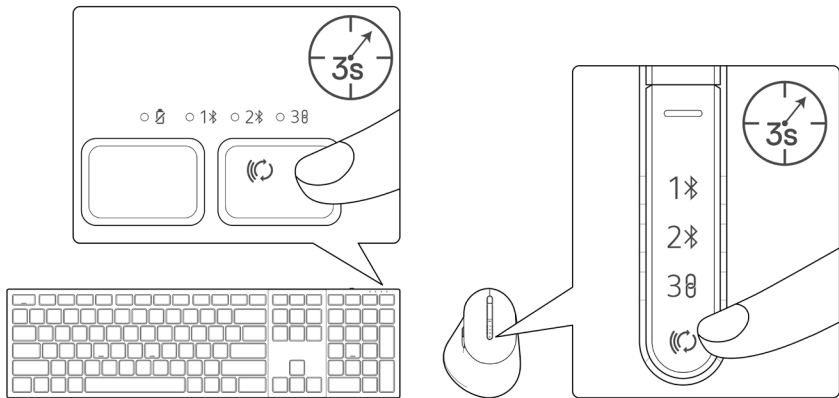
Your Dell wireless keyboard and mouse can be paired with your Bluetooth enabled computer. You can pair and switch between a laptop, desktop, and a compatible mobile device.

 **NOTE:** You can connect up to two devices with your wireless keyboard and wireless mouse using Bluetooth.


 **NOTE:** Before pairing your wireless keyboard or mouse using Bluetooth, ensure that you unpair the inactive devices on your computer, and update the Bluetooth driver on your Dell computer to the latest version. For more information, see [Drivers & Downloads at Dell.com/support](#).

 **NOTE:** Ensure that the distance between your computer and keyboard or mouse is within the Bluetooth reception range.

1. Press the connection-mode button to switch to the first Bluetooth pairing mode (1⌘).
2. Press the connection-mode button for 3 seconds. Ensure that the first Bluetooth channel LED (1⌘) blinks white, indicating the Bluetooth pairing is initiated.

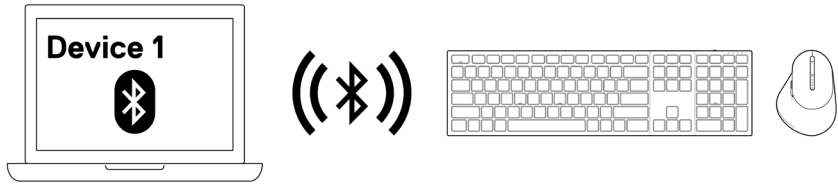



3. Pair your wireless keyboard or mouse with your Bluetooth-enabled computer.
  - 1) Select **Start > Settings > Bluetooth & other devices > Add Bluetooth or other device > Bluetooth**.
  - 2) Select **Dell KB900** (for keyboard) or **Dell MS900** (for mouse) and then **Done**.

 **NOTE:** If Dell KB900 or Dell MS900 is not listed, ensure that the pairing mode is enabled on the keyboard or mouse.


4. Confirm the pairing process on both wireless keyboard or mouse and your computer.


The first Bluetooth channel LED (1) turns solid white for a few seconds to confirm the pairing, and then the light turns off. After your keyboard or mouse and computer pairing is completed, the keyboard or mouse connects to the computer automatically when the Bluetooth is enabled and both devices are within the Bluetooth range.




 **NOTE:** The above image indicates the first Bluetooth enabled device pairing.

# Pairing device two using Bluetooth

 **NOTE:** You can connect up to two devices with your wireless keyboard and wireless mouse using Bluetooth.

 **NOTE:** Before pairing your wireless keyboard or mouse using Bluetooth, ensure that you unpair the inactive devices on your computer and update the Bluetooth driver on your Dell computer to the latest version. For more information, see Drivers & Downloads at [Dell.com/support](https://Dell.com/support).

 **NOTE:** Ensure that the distance between your computer and keyboard or mouse is within the Bluetooth reception range.

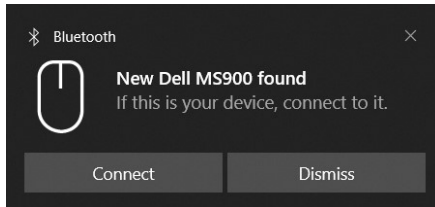
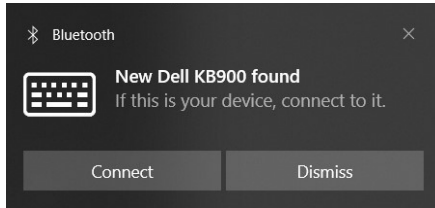
 **NOTE:** For Bluetooth pairing you can use Dell Pair, Swift Pair, or manual pair option.

1. In Windows Search, type Bluetooth.
2. Click **Bluetooth and other devices settings**. The **Settings** window appears.
3. Ensure that the **Show notifications to connect using Swift Pair** check box is selected.




Show notifications to connect using Swift Pair  
When selected, you can connect to supported Bluetooth devices quickly when they're close by and in pairing mode.

4. Ensure that the Bluetooth is turned on.
5. Place your wireless keyboard or mouse near your computer. Then press the connection-mode button to switch to the second pairing mode (2\*).
6. Press the connection-mode button for three seconds. Ensure that the second Bluetooth channel LED (2\*) blinks white, indicating the Bluetooth pairing is initiated.

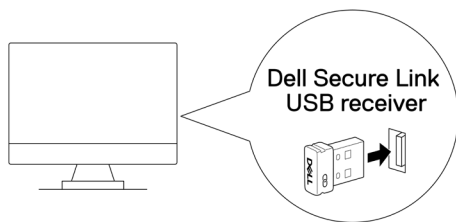
7. The **New Dell KB900 found** (for keyboard) and **New Dell MS900 found** (for mouse) window appears. Click **Connect** and confirm the pairing process of both wireless keyboard and mouse with your computer.



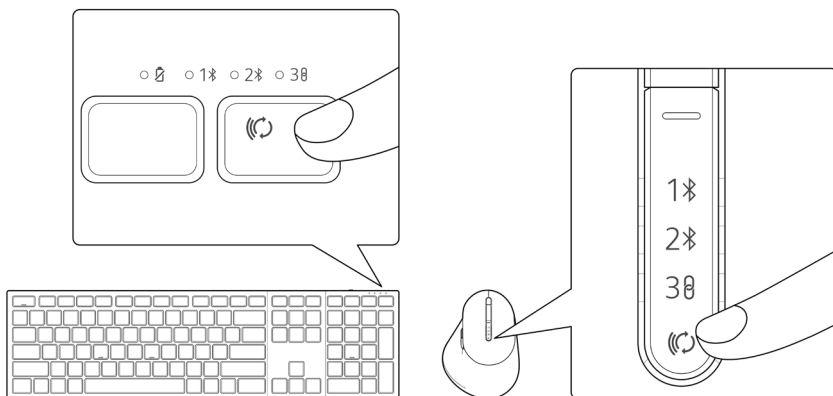
# Pairing with a Dell Secure Link USB receiver

-  **NOTE:** You can connect a device to your wireless keyboard or mouse using the Dell Secure Link USB receiver.
-  **NOTE:** Use RF mode to enter the BIOS mode.
-  **NOTE:** Dell Secure Link USB Receiver is compatible with only KB900, MS900, and KM900.

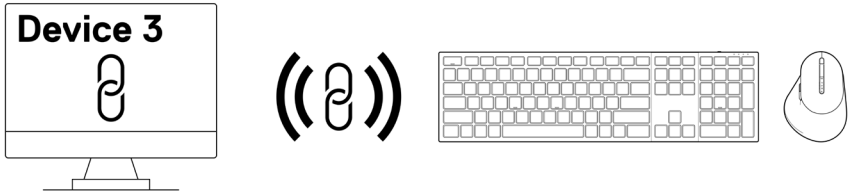
1. Connect the Dell Secure Link USB receiver to the USB port on your computer.




2. Toggle the connection-mode button on your keyboard or mouse until the RF mode LED (30) lights up while changing to the RF mode.



The keyboard or mouse is now paired with your USB device.



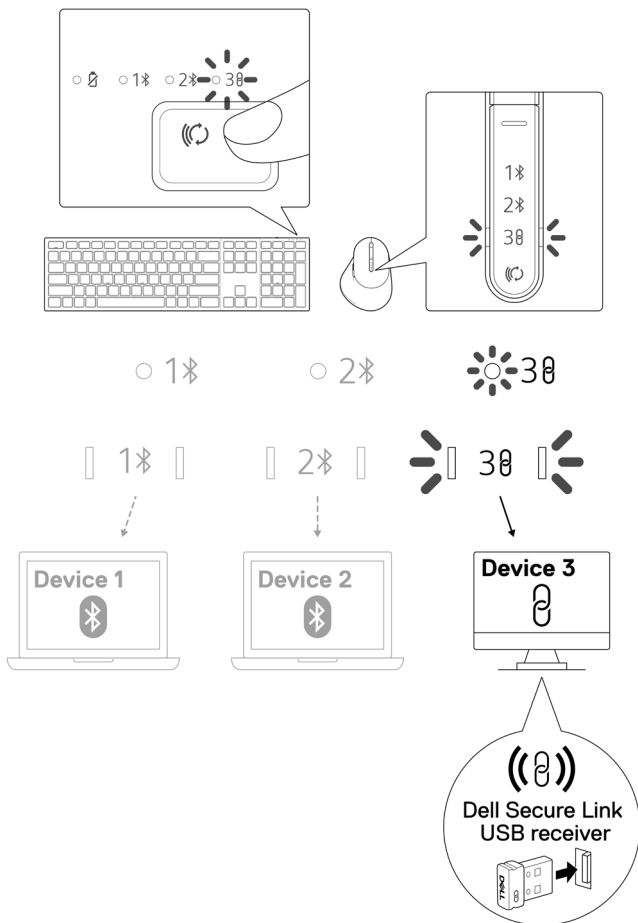
 **NOTE:** The above image indicates the RF enabled device pairing.

# Switching between paired devices

Your wireless keyboard or mouse memorises the last connection mode. Every time you turn on the keyboard or mouse, the last connection-mode LED along with the low battery LED indicator turn on for 3 seconds.

If you want to connect to another paired device, toggle the connection-mode button until the respective connection-mode LED turns on.

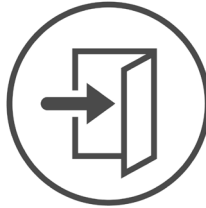
For example, if you want to connect to the wireless keyboard or mouse using the Dell Secure Link USB receiver then press the connection-mode button until the connection-mode LED (30) turns solid white for 3 seconds.









# Zoom touch controls for the keyboard

---

Your Dell wireless keyboard has dedicated keys to control video conference via Zoom app. These keys will automatically illuminate after successfully joining the meeting and remain active for the duration of the video conference session.

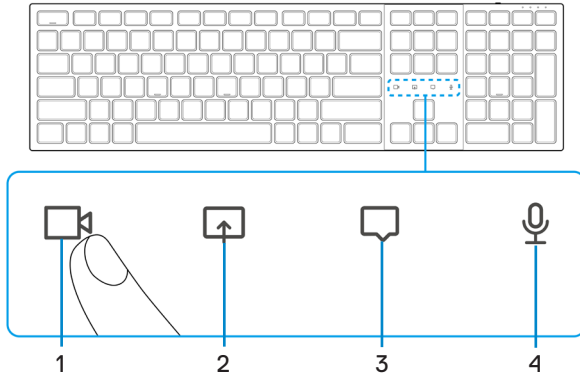


## Zoom Login

-  **NOTE:** Touch controls are not supported for the Zoom web browser version.
-  **NOTE:** Zoom touch controls only work with Zoom's latest desktop version 5.9.3 and above.
-  **NOTE:** If Zoom is not installed on your system, the Zoom touch controls will not work.
-  **NOTE:** Dell Peripheral Manager is required to be installed and running to enable the Zoom functions on the keyboard. If Dell Peripheral Manager is uninstalled, then the Zoom functions will be disabled.
-  **NOTE:** Swipe the icons from left to right or right to left to enable or disable the Zoom touch controls while in a Zoom meeting.
-  **NOTE:** Double tap the Zoom touch controls to perform the functions. You may also change the settings to single tap via Dell Peripheral Manager.









1. Video on/off icon

2. Share screen icon


3. Chat icon

4. Microphone on/off icon

 **NOTE:** If the video and/or microphone icon lights red, this indicates the respective function is disabled.

 **NOTE:** When you receive a chat message in the video conferencing app, the chat icon will light up and blink.

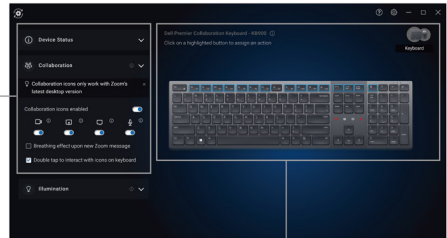
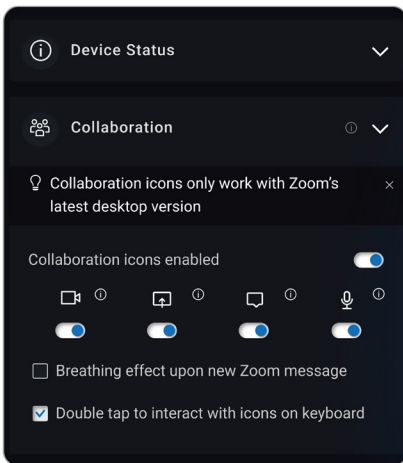
# Zoom touch control settings

 **NOTE:** Touch controls for Zoom only work on Windows OS with Dell Peripheral Manager installed.

Dell KB900 keyboard comes with Zoom touch control icons for video, share screen, chat notification and mic. Zoom touch control settings on Dell Peripheral Manager allow you to toggle on and off the Zoom touch controls.

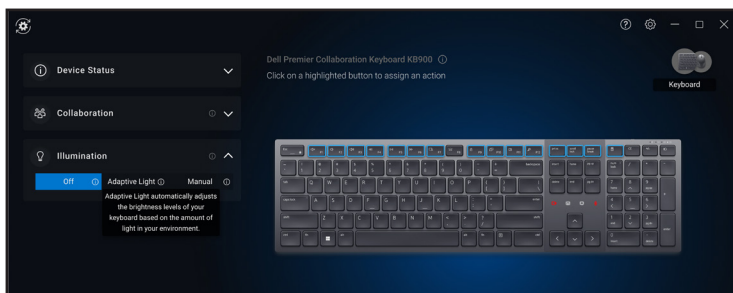
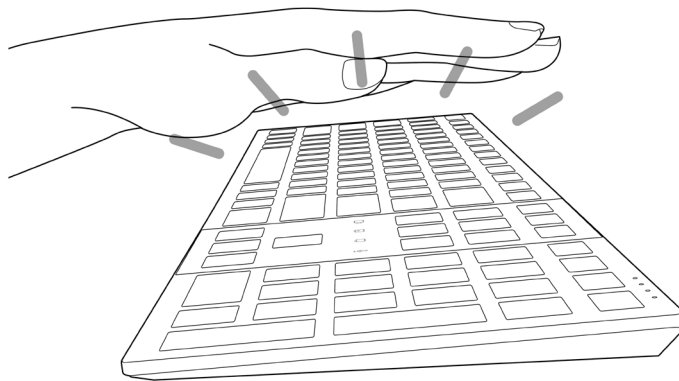
When activated, the Zoom touch control icons will light up on the keyboard. The message icon would blink on receiving a zoom chat message. The video & mic icon will turn red when video & mic are off.

Users can also choose to turn off double tap option. With this they can instantly act by single tapping on the icon on the keyboard.





# Intelligent backlighting

Your Dell wireless keyboard has embedded sensors to regulate the backlight. The ambient light sensor adjusts the backlight brightness based on the environmental lighting conditions. A proximity sensor lights the backlit keys when your hand is in close proximity to the keyboard.



The backlight is turned on as described in the table below:

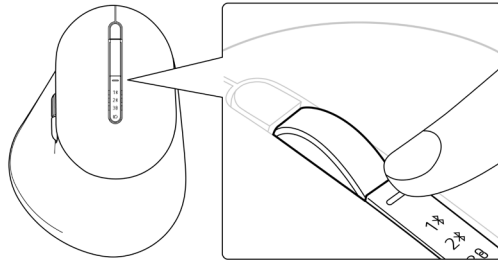
-  **NOTE:** If the ambient brightness detected in your environment is bright enough, then the backlight will not turn on to conserve battery life.
-  **NOTE:** While charging, the proximity sensor is disabled and the backlight is always turned on. The brightness of the backlight depends on the user setting or if no key is pressed within 30 seconds then the backlight will fade to the lowest brightness setting which is 25%. When you turn off the keyboard then the backlight will also turn off.

<b>Action</b>	<b>Backlight status: On</b>
Hand is detected (within detection range of 2-4cm)	On
Hand is detected (within detection range of 2-4cm), but no key is pressed for 30 seconds (Hands are resting on the keyboard).	Fade off after 30 seconds
Hand is no longer detected	Fade off after 5 seconds
Wireless keyboard is charging	On
Wireless keyboard is charging but no key is pressed within 30 seconds	On but after 30 seconds fade to the lowest brightness setting

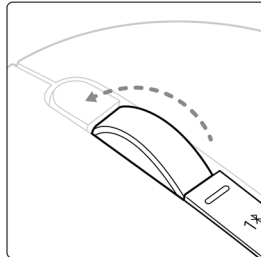
# Changing the scroll-speed on wireless mouse

---

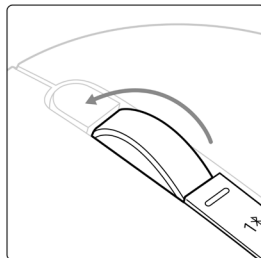
Your Dell wireless mouse's vertical-scroll wheel can be shifted between two scrolling modes, such as notched and fast. To toggle between these modes, press the scroll-speed toggle button.



- Notched speed mode is suitable for scrolling precise items.



- Fast speed mode is best for scrolling through long web pages and files.



# Troubleshooting

---

<b>Problems</b>	<b>Possible solutions</b>
Keyboard or mouse is not functioning	<ol style="list-style-type: none"><li>1. Ensure that the battery is fully charged.</li><li>2. Turn off the keyboard or mouse, and then turn it on.</li></ol>
Keyboard or mouse buttons do not work	<ol style="list-style-type: none"><li>1. Ensure that the battery is fully charged.</li><li>2. Turn off the keyboard or mouse, and then turn it on.</li><li>3. On your computer, turn the Bluetooth off and on.</li><li>4. Restart your computer.</li><li>5. Check for interference that may affect Bluetooth connectivity. For example, nearby Wi-fi or USB 3.0 devices.<ul style="list-style-type: none"><li>• Check for any wireless devices that are in close proximity such as wireless networking devices. For example, Bluetooth printer, USB 3.0 devices, and so on.</li><li>• Move away from these devices.</li></ul></li></ol>
Bluetooth pairing button does not work	<ol style="list-style-type: none"><li>1. Ensure that the battery is fully charged.</li><li>2. Turn off the keyboard or mouse, and then turn it on.</li><li>3. Ensure that the Bluetooth device is in pairing mode by pressing the Bluetooth pairing button for three seconds. The Bluetooth channel LED blinks white to indicate the Bluetooth pairing is initiated.</li></ol>

## Problems

## Possible solutions

---

Unable to pair the keyboard or mouse with the computer

1. Ensure that the battery is fully charged.
2. Turn off the keyboard or mouse, and then turn it on.
3. On your computer, turn the Bluetooth off and on.
4. Restart your computer.

Check if you have the latest Bluetooth driver installed on your computer.

Go to **[www.dell.com/support](http://www.dell.com/support)** and update the correct Bluetooth driver. For more information, see **Download and install the Bluetooth Driver**.

5. Check for interference that may affect Bluetooth connectivity. For example, nearby Wi-fi or USB 3.0 devices.
  - Check for any wireless devices that are in close proximity such as wireless networking devices. For example, Bluetooth printer, USB 3.0 devices, and so on.
  - Move away from these devices.
6. Ensure that the Bluetooth device is in pairing mode by pressing the connection-mode button for three seconds. The Bluetooth channel LED blinks white to indicate the Bluetooth pairing is initiated.
7. Check if your computer is included in the list of selected Dell computers compatible with the keyboard or mouse. For more information, see **Dell.com/support**.

---

Wireless connection is lost

1. Ensure that the battery is fully charged.
  2. Turn off the keyboard or mouse, and then turn it on.
  3. On your computer, turn the Bluetooth off and on.
  4. Restart your computer.
  5. Check if you have the latest Bluetooth driver installed on your computer.

Go to **[www.dell.com/support](http://www.dell.com/support)** and update the correct Bluetooth driver. For more information, see **Download and install the Bluetooth Driver**.
-

## Problems

## Possible solutions

Wireless connection is lost

6. Check for interference that may affect Bluetooth or RF connectivity. For example, nearby Wi-fi or USB 3.0 devices.
  - Check for any wireless devices that are in close proximity such as wireless networking devices. For example, Bluetooth printer, USB 3.0 devices, and so on.
  - Move away from these devices.
  - Ensure that the distance between your laptop, desktop, or a compatible mobile device where the Dell Secure Link USB receiver is connected is within 1m.
  - Ensure that the USB-A port where the Dell Secure Link USB receiver is connected is not close to the USB-A port(s) where other devices are connected.
  - If necessary, connect the Dell Secure Link USB receiver to the dongle extender and check the wireless connection again.

- Keyboard key presses are lagging, auto-repeating, and erratic
- Mouse movement and button clicks are lagging and erratic

- Check for interference that may affect Bluetooth or RF connectivity. For example, nearby Wi-fi or USB 3.0 devices.
- Check for any wireless devices that are in close proximity such as wireless networking devices. For example, Bluetooth printer, USB 3.0 devices, and so on.
  - Move away from these devices.
  - Ensure that the distance between your laptop, desktop, or a compatible mobile device where the Dell Secure Link USB receiver is connected is within 1m.
  - Ensure that the USB-A port where the Dell Secure Link USB receiver is connected is not close to the USB-A port(s) where other devices are connected.
  - If necessary, connect the Dell Secure Link USB receiver to the dongle extender and check the wireless connection again.



## Problems

## Possible solutions

Dell Pair notification does not open when a Bluetooth device is turned on for the first time

1. Windows 10 (version 19041) is the oldest version to support Dell Pair.
2. Bluetooth version 5.0 or higher is required.
3. Bluetooth is supported on the computer. It is turned ON under Windows settings.
4. The Bluetooth device supports detection by Dell Pair.
5. The Bluetooth device is placed close to the detection range of the computer. Lift the keyboard or mouse and bring this closer to your computer.
6. Check the computer and the Bluetooth device both have sufficient battery charge to operate.
7. The Bluetooth device has the latest firmware.
8. The Bluetooth controller on the computer is from Intel.
9. Power cycle the Bluetooth device.
10. Ensure that the Bluetooth device is in pairing mode by pressing the connection-mode button for three seconds. The Bluetooth channel LED blinks white to indicate the Bluetooth pairing is initiated.

Dell Pair reports a pairing error

Proceed to reconnect through Dell Pair using the following steps:

1. Download and install the latest Bluetooth drivers on your computer. For more information, see **Download and install the Bluetooth Driver**. If Bluetooth device is brought near computer and is in pairing mode, the dell pair UI aids pairing.
2. Wait for pairing error User Interface (UI) to autodismiss.
3. Move the Bluetooth device far away from the computer.
4. Bring the Bluetooth device back near the computer.
5. Ensure that the Bluetooth device is in pairing mode by pressing the connection-mode button for three seconds. The Bluetooth channel LED blinks white to indicate the Bluetooth pairing is initiated.

## Problems

## Possible solutions


Unable to pair using Dell Pair and Swift Pair

1. Press the connection-mode button to switch to the first or second Bluetooth pairing mode.
2. Press the connection-mode button for three seconds until the selected Bluetooth channel LED starts blinking white.
3. Open **Start > Settings > Bluetooth & other devices > Add Bluetooth or other device**.
4. Select **Add device > Bluetooth**.
5. Select **Dell KB900** (for keyboard) or **Dell MS900** (for mouse) and add it.
6. If adding the wireless keyboard or mouse is not successful, restart the system and repeat the steps.

Dell Secure Link USB receiver not working

1. Disconnect and reconnect the Dell Secure Link USB receiver or connect it to another USB-A port.
2. Ensure that the third connection mode is selected (38).
3. If the Dell Secure Link USB receiver is still not working, restart the system or check the KB900 - Dell Peripheral Manager or MS900 - Dell Peripheral Manager for errors.

Zoom touch control icons on keyboard are not visible

1. Ensure that you have installed Zoom's latest desktop version (5.9.3 and above) to your device.  
 **NOTE:** Touch controls are not supported for the Zoom web browser version.
2. Swipe the Zoom touch control icons from left to right or right to left to ensure you have not accidentally disabled them.
3. Ensure that Dell Peripheral Manager is installed and running.

Backlight on keyboard does not turn on

1. Ensure the keyboard is turned on.
2. If the ambient brightness detected in your environment is bright enough, then the backlight will not turn on to conserve battery life.


# Keyboard specifications

---

## General

Model number	KB900
Connection type	<ul style="list-style-type: none"><li>• Wireless (2.4 GHz RF with Dell Secure Link USB Receiver)</li><li>• Bluetooth 5.1 LE (supports Dell Pair and Microsoft Swift Pair)</li></ul>
System requirement	<ul style="list-style-type: none"><li>• Windows Server 2012; 2012 R2, 2016 (RF receiver only)</li><li>• Windows 8.1, 32/64-bit</li><li>• Windows 10, 32/64-bit</li><li>• Windows 11</li><li>• Red Hat Enterprise Linux 9.1</li><li>• Android 11</li><li>• iOS 15.4</li><li>• MacOS 12.6</li><li>• Chrome 107.0.5304.110(64-Bit)</li><li>• Linux (Red Hat Enterprise 8.0 /Ubuntu 18.4)</li><li>• FreeDOS (RF receiver only)</li></ul>

## Electrical

Operating voltage	5 V
Battery type	Polymer Li-ion Rechargeable Battery 3000 mAh
Battery life	<ul style="list-style-type: none"><li>• 20 days battery life with backlight</li><li>• 34 months battery life without backlight and without zoom led</li><li>• 1min charge Battery life -more than 1 day</li><li>• 80% battery capacity for 1 hour charging by 5V/3A USB-C adapter</li></ul> <p> <b>NOTE:</b> Charging time varies based on the connected port and its rating.</p>

# Physical characteristics

Weight 730g  $\pm$ 30g (1.60 lb  $\pm$ 0.06g)

## Dimensions:

Length 439.55  $\pm$ 0.5 mm (17.30 in.)

Width 121.5  $\pm$ 0.5 mm (4.78 in.)

Height 20.7  $\pm$ 0.5 mm (0.81 in.)

# Environmental

## Temperature:

Operating 0°C to 40°C (32°F to 104°F)

Storage -40°C to 65°C (-40°F to 149°F)

Storage humidity 20% to 90% relative humidity; non-condensing

# Wireless

RF resolution 2.4 GHz RF

Operation distance Up to 10-meter


# Mouse specifications

---

## General

Model number	MS900
Connection type	<ul style="list-style-type: none"><li>• Wireless (2.4 GHz RF with Dell Secure Link Receiver)</li><li>• Bluetooth 5.1 LE (supports Dell Pair and Microsoft Swift Pair)</li></ul>
System requirement	<ul style="list-style-type: none"><li>• Windows Server 2012; 2012 R2, 2016 (RF receiver only)</li><li>• Windows 8, 32/64-bit</li><li>• Windows 10, 32/64-bit</li><li>• Windows 11</li><li>• Android 11</li><li>• Chrome 107</li><li>• Mac OS 13</li><li>• Linux 6.x, Ubuntu 18 and Redhat 8 Enterprise</li><li>• Free-DOS (RF receiver only)</li></ul>

## Electrical

Operating voltage	5 V
Battery type	Polymer Li-ion Rechargeable Battery 500 mAh
Battery life	<ul style="list-style-type: none"><li>• Active mode by 0.72 hour, reset mode 1 by 0.48 hour, reset mode 2 by 1.2 hours, and sleep mode by 21.6 hours per day.</li><li>• 5 days per week</li><li>• 1min charge for half day usage model</li><li>• 80% battery capacity for 1 hour charging</li></ul> <p> <b>NOTE:</b> Charging time varies based on the connected port and its rating.</p>

# Physical characteristics

Weight (without dongle)	140±3 g (0.308 lb)
Dimensions:	
Length	126.94 ±0.5 mm (4.99 in.)
Width	89.70 ±0.5 mm (3.53 in.)
Height	45.45 ±0.3 mm (1.78 in.)

# Environmental

Temperature:	
Operating	0°C to 40°C (32°F to 104°F)
Storage	-40°C to 65°C (-40°F to 149°F)
Storage humidity	20% to 90% relative humidity; non-condensing

# Wireless

RF resolution	2.4 GHz RF
Operation distance	Up to 10-meter

# Statutory Information

---

## Warranty

### Limited warranty and return policies

Dell-branded products carry a three-year limited hardware warranty. If purchased together with Dell system, it will follow the system warranty.

#### For U.S. customers

This purchase and your use of this product are subject to Dell's end user agreement, which you can find at [Dell.com/terms](https://www.dell.com/terms). This document contains a binding arbitration clause.

#### For European, Middle Eastern and African customers

Dell-branded products that are sold and used are subject to applicable national consumer legal rights, the terms of any retailer sale agreement that you have entered into (which will apply between you and the retailer) and Dell's end user contract terms.

Dell may also provide an additional hardware warranty – full details of the Dell end user contract and warranty terms can be found by going to [Dell.com/terms](https://www.dell.com/terms), selecting your country from the list at the bottom of the “home” page and then clicking the “terms and conditions” link for the end user terms or the “support” link for the warranty terms.

#### For non-U.S. customers

Dell-branded products that are sold and used are subject to applicable national consumer legal rights, the terms of any retailer sale agreement that you have entered into (which will apply between you and the retailer) and Dell's warranty terms. Dell may also provide an additional hardware warranty – full details of Dell's warranty terms can be found by going to [Dell.com](https://www.dell.com), selecting your country from the list at the bottom of the “home” page and then clicking the “terms and conditions” link or the “support” link for the warranty terms.