

PERFORMANCE

Processor

Intel® Core™ i7-13700H, 14C (6P + 8E) / 20T, P-core 2.4 / 5.0GHz, E-core 1.8 / 3.7GHz, 24MB

Graphics

NVIDIA® GeForce RTX™ 4050 6GB GDDR6

Chipset

Intel SoC Platform

Memory

16GB Soldered LPDDR5-5200

Memory Slots

Memory soldered to systemboard, no slots, dual-channel

Max Memory

16GB soldered memory, not upgradable

Storage

1TB SSD M.2 2242 PCIe® 4.0x4 NVMe®

Storage Support^[1]

Up to two drives, 2x M.2 SSD

- M.2 2242 SSD up to 1TB
- M.2 2280 SSD up to 1TB

Storage Slot

Two M.2 slots

- One M.2 2242 PCIe 4.0 x4 slot
- One M.2 2280 PCIe 4.0 x4 slot

Card Reader

4-in-1 Card Reader

Optical

None

Audio Chip

High Definition (HD) Audio, Realtek® ALC3287 codec

Speakers

Stereo speakers, 2W x2, optimized with Dolby® Atmos®

Camera

FHD 1080p + IR with Privacy Shutter, ToF Sensor

Microphone

2x, Array

Battery^[2]

Integrated 75Wh

Power Adapter

170W Slim Tip (3-pin)

DESIGN

Display^[3]

16" 2.5K (2560x1600) IPS 350nits Anti-glare, 100% sRGB, 120Hz, Eyesafe®, G-Sync

Touchscreen

None

Keyboard

Backlit, English (EU)

Case Color

Arctic Grey

Surface Treatment

Aluminium Stamping (Anodized with Sandblasting)

Case Material

Aluminium (Top), Aluminium (Bottom)

Dimensions (WxDxH)^[4]

356 x 251 x 17.5 mm (14.02 x 9.88 x 0.69 inches)

Weight^[5]

Starting at 1.95 kg (4.30 lbs)

SOFTWARE

Operating System

Windows® 11 Home, Benelux (EN/FR/DE/NL)

Bundled Software

Office Trial

CONNECTIVITY

Ethernet

No Onboard Ethernet

WLAN + Bluetooth^[6]

Wi-Fi® 6E, 11ax 2x2 + BT5.1

Standard Ports

- 1x Card reader
- 1x HDMI® 2.1, up to 4K/60Hz
- 1x Headphone / microphone combo jack (3.5mm)
- 1x Power connector
- 1x Thunderbolt™ 4 / USB4® 40Gbps (support data transfer, Power Delivery 3.0 and DisplayPort™ 1.4)
- 1x USB 3.2 Gen 1
- 1x USB 3.2 Gen 1 (Always On)
- 1x USB-C® 3.2 Gen 2 (support data transfer, Power Delivery 3.0 and DisplayPort 1.4)

Monitor Cable

None

SECURITY & PRIVACY

Security Chip

Firmware TPM 2.0 Enabled

Fingerprint Reader

None

Other Security

- Camera privacy shutter
- IR camera for Windows® Hello

SERVICE

Base Warranty

2-year, Courier or Carry-in

Included Upgrade

2Y Premium Care with Onsite upgrade from 2Y Courier/Carry-in

ACCESSORIES

Bundled Accessories

None

CERTIFICATIONS

Green Certifications^[8]

- ENERGY STAR® 8.0
- EPEAT™ Gold Registered
- ErP Lot 26
- ErP Lot 6
- RoHS compliant

Other Certifications

- Eyesafe® Certified 2.0
- TÜV Rheinland® Low Blue Light (Hardware Solution)

Mil-Spec Test

MIL-STD-810H military test passed (21 test items)

MODEL

TopSeller	: Yes	Announce Date	: 2023-04-18
EAN / UPC / JAN	: 197528043777	End of Support	: 2029-03-20

Note:

^[1] The storage capacity supported is based on the test results with current Lenovo storage offerings.

^[2] Rapid Charge Express is only effective in hibernates or fully shutting down the computer.

^[3] IPS (in-plane switching) technology may refer to IPS, PLS, ADS, AHVA, AAS.

^[4] The system dimensions may vary depending on configurations.

^[5] The system weight is approximate and based on results in Lenovo lab, which varies depending on the source of component, variance of the distribution of each component, and manufacturing process. It may not be the exact weight for each specific model.

^[6] Bluetooth 5.2 is hardware ready but may run at a lower version due to OS limitations.

^[7] Wi-Fi 6E full features might be limited by country-level.....
· Lenovo reserves the right to change specifications without notice.

To see more note information, please link to <https://psref.lenovo.com/Detail/2170?M=83AQ004LMH>

Premium Care - Advanced Support from Real People. Real Fast.



REAL PERSON

Choose how you want to reach us - through the phone, chat or email - our expert technicians will take care of you.



REAL FAST

Highly trained technicians will provide you real-time solutions, whatever the issue, on your first contact. If needed, our team will schedule an onsite visit for the next business day.



HASSLE FREE

'Getting started' and 'how-to' assistance for hardware and software. Easy solutions that are simple to reach - that's how Premium Care delivers you the ideal support experience.



PC HEALTH CHECK

Free annual PC Health Check that allows our experts to spot issues before you do so they can resolve them quickly and help you avoid PC problems.

Accidental Damage Protection - Protection of your PC from the unexpected.

Experience shows that a significant portion of devices may be damaged (and not covered under warranty) in the first three years. Lenovo's Accidental Damage Protection service covers accidents beyond the system warranty such as drops, spills, bumps and even electrical surges. Make sure your new device has maximum protection, avoid unplanned costs and get peace of mind.

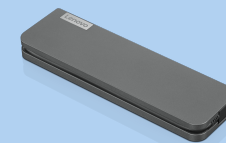
Base Warranty – Included with the systems you purchase, default 1- or 3-year coverage window.

Warranty Extensions & Upgrades – Service and protection that's right for your circumstances.

- Pick Up & Return Courier
- Onsite Support
- Technician Installed Customer
- Replaceable Unit Service
- International Warranty Upgrade

Lenovo may not offer the products, services or features discussed in this document in all regions. Lenovo may withdraw an offering at any time. Consult your local representative for information on offerings available in your area. Lenovo reserves the right to change specifications or other product information without notice. Lenovo is not responsible for photographic or typographical errors. Lenovo provides this publication "as is" without warranty of any kind, either express or implied, including the implied warranties of merchantability or fitness for a particular purpose.

Recommended Accessories



Lenovo USB-C Mini Dock_US

40AU0065US

Expand Your Potential with An Universal Mini Dock; Lenovo understands that modern business depends on a wide variety of PC's and even brands to meet their business needs. To make this easier Lenovo USB-C Mini dock is ...

Recommended Services

BETTER

3Y Premium Care upgrade from 2Y Premium Care (5WS1C83304)

For a full list of accessories and services, please visit:
<https://smartfind.Lenovo.com>

Lenovo

PSREF
Product Specifications
Reference