

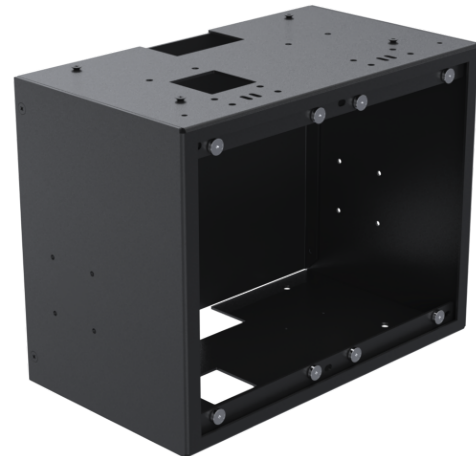
# SCO Kiosk Center Module - 02

SPSK200-02



The SCO Kiosk centre module sits underneath the SCO Kiosk Top module and is designed to accommodate two internal peripheral options, such as a printer and scanner combination. It can either be combined with the counter baseplate for a counter mounted solution or the SCO floorstand for a freestanding floor solution. Magnetic fixings for peripheral covers enables easy maintenance for the swapping of printer paper, for example.

- Two internal peripheral options
- Magnetic fixings for peripheral covers
- Optional secure fixing of peripherals
- Internal cable management for a neat installation
- Two mounting options for peripherals located on the sides of the centre module



## Product Specifications

<b>Colour Name</b>	Black
<b>Colour Type</b>	Structured
<b>Compatible device name</b>	1400 Series, GFS4470, GFS4500 Serie, H400, IM30, Magellan 1500i, Mc Print2-3, TM T88, TM-M30 & TM-M30II, TSP143
<b>Main material</b>	Metal
<b>Product Version</b>	1.0
<b>Mounting</b>	Hardware Specific Mounting Pattern
<b>Mounting Type</b>	Floor, Counter
<b>Units per Box</b>	1
<b>Unit Weight</b>	6.89 kg
<b>Box Weight</b>	7.95 kg
<b>Warranty</b>	5 Years

## Product Dimensions

<b>Unit Depth</b>	202 mm
<b>Unit Height</b>	270 mm
<b>Unit Weight</b>	6.89 kg

## Package Dimensions

<b>Box Depth</b>	477 mm
<b>Box Height</b>	282 mm
<b>Box Width</b>	477 mm



[www.ergonomic.solutions](http://www.ergonomic.solutions)