

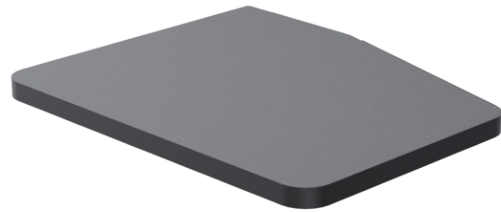
SCO Kiosk Left shelf - 02

SPSK511-02



The SCO Kiosk Left Shelf is a versatile accessory designed to hold a basket or serve as a space to place items after scanning at self-checkout kiosks.

Seven height options for placing the shelf on the side of the SCO kiosk



Product Specifications

Colour Name	Black
Colour Type	Structured
Main material	Metal
Product Version	1.0
Mounting	Other
Mounting Type	Floor, Counter
Units per Box	1
Unit Weight	4.33 kg
Box Weight	5.17 kg
Warranty	5 Years

Product Dimensions

Unit Depth	433 mm
Unit Height	64.5 mm
Unit Weight	4.33 kg

Package Dimensions

Box Depth	515 mm
Box Height	55 mm
Box Width	415 mm



www.ergonomic.solutions