

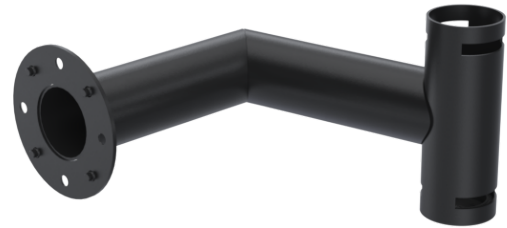
SCO Kiosk Peripheral arm - landscape - 02

SPSK507-02



Peripheral arms (Landscape mode)

Allows for peripherals to be added externally
It can be mounted on either the right or left side of the SCO Kiosk Top Module (SPSK100) AND the SCO Kiosk Center Module (SPSK200)
SPSK507 Fits max 24" display in landscape mode



Product Specifications

Colour Name	Black
Colour Type	Structured
Main material	Metal
Product Version	1.0
Mounting	Other
Mounting Type	Floor, Counter
Units per Box	1
Unit Weight	0.67 kg
Box Weight	1.47 kg
Warranty	5 Years

Product Dimensions

Unit Depth	218 mm
Unit Height	119.9 mm
Unit Weight	0.67 kg

Package Dimensions

Box Depth	375 mm
Box Height	128 mm
Box Width	141 mm



www.ergonomic.solutions