



The product images are for illustration purposes only. Actual product appearance, ports, keyboard layout, and accessories may vary by model.

- Intel Atom x6425RE (4C / 4T, 1.9GHz, 1.5MB)
- 1x 8GB SODIMM DDR4-3200
- 256GB SSD M.2 2230 PCIe 3.0x4 NVMe
- Integrated Intel UHD Graphics
- Windows 10 IoT Enterprise LTSC 2021, English
- Case color - Black (SE10-I)
- 3-year, Onsite

Premier Support - A direct 24x7x365 line to our most elite technicians.

- Advanced technical support, 24x7x365, in more than 100 markets
- Technical Account Managers for proactive relationship and escalation management
- Comprehensive hardware & OEM software support
- Priority on service delivery and repair parts
- Single point of contact for simplified end-to-end case management
- Lenovo Service Connect Portal for customized reporting and product support

Accidental Damage Protection - Protection of your PC from the unexpected.

Experience shows that a significant portion of devices may be damaged (and not covered under warranty) in the first three years. Lenovo's Accidental Damage Protection service covers accidents beyond the system warranty such as drops, spills, bumps and even electrical surges. Make sure your new device has maximum protection, avoid unplanned costs and get peace of mind.

Base Warranty - Included with the systems you purchase, default 1- or 3-year coverage window.

Warranty Extensions & Upgrades - Service and protection that's right for your circumstances.

- Pick Up & Return Courier
- Onsite Support
- Technician Installed Customer
- Replaceable Unit Service
- International Warranty Upgrade

Recommended Accessories United Kingdom



ThinkPad Bluetooth Presenter Mouse (Aura Edition)

4Y51T62792



Lenovo Analog In-Ear Headphones Gen II Bulk Package (20pcs)

4XD1T54899



Lenovo 310 FHD Webcam Black

GXC1S15024



Lenovo 2TB Performance PCIe Gen4 NVMe OPAL2 M.2 2280 SSD

4XB1M86956



Kensington MicroSaver DS 2.0 Cable Lock from Lenovo

4XE1L68273



ThinkEdge 65W Wide Temperature AC Adapter(slim tip)-UK/Hong...

4X21J08880

>> [View More Accessories](#)

PERFORMANCE**Processor**

Intel® Atom x6425RE (4C / 4T, 1.9GHz, 1.5MB)

Graphics

Integrated Intel® UHD Graphics

Chipset

Intel® SoC Platform

Memory

1x 8GB SODIMM DDR4-3200

Max Memory

Up to 32GB DDR4-3200

Memory Slots

Two DDR4 SODIMM slots, dual-channel capable

Storage256GB SSD M.2 2230 PCIe® 3.0x4 NVMe®^[1]**Max Storage Support**SE10-I: Up to two drives, 64GB eMMC 5.1 on systemboard + 1x M.2 SSD
• M.2 SSD up to 1TB • 64GB eMMC 5.1, for SE10-I (-20-60°C) only**Power Supply**

9-36V WDC

DESIGN**Keyboard**

None

Mouse

None

Case Color

Black (SE10-I)

Mounting

1x DIN Rail Mount

Dimensions (WxDxH)^[2]

179 x 135 x 60 mm (7.04 x 5.31 x 2.36 inches)

Weight^[3]

2.0 kg (4.41 lbs)

CONNECTIVITY**Ethernet**

2x 2.5 Gigabit Ethernet (2x RJ-45)

WLAN + Bluetooth^[4]

Intel® Wi-Fi® 6E AX210, 802.11ax 2x2 + BT5.1

WWAN^[5]

WWAN Not Supported

Left Ports

- 1x Nano SIM slot^[6]
- 1x SD card slot

Front Ports

- 2x USB 3.2 Gen 2
- 1x line-out (3.5mm)
- 1x microphone (3.5mm)
- 2x serial (RS232 / RS422 / RS485, BIOS selectable)

- 3x LED (LED1: storage / LED2: Wireless / LED3: User defined or WWAN)

Optional Front Ports (configured)

None

Rear Ports

- 2x USB 2.0
- 1x HDMI® 1.4b
- 1x DisplayPort™ 1.4
- 1x 2pin remote power switch (SE10-I only)
- 1x Slim Tip power connector (SE10 only)
- 2x 2.5GbE Ethernet (RJ-45)

Optional Rear Ports (configured)

2x RP-SMA Female, Wi-Fi® antenna

SECURITY & PRIVACY**Security Chip**

Discrete TPM 2.0, TCG certified

Other Security

- ThinkShield
- NITS SP800-147B compliant

MANAGEABILITY**System Management**

XClarity In-Band manageability

SERVICE**Base Warranty**

3-year, Onsite

Included Upgrade

None

ENVIRONMENTAL**Operating Temperature**

Wide Temperature -20°C to 60°C (-4°F to 140°F)

CERTIFICATIONS**Green Certifications**

- ErP Lot 6/26
- Low Halogen
- REACH
- RoHS compliant
- TED (ECO-declaration)
- WEEE

Other Certifications

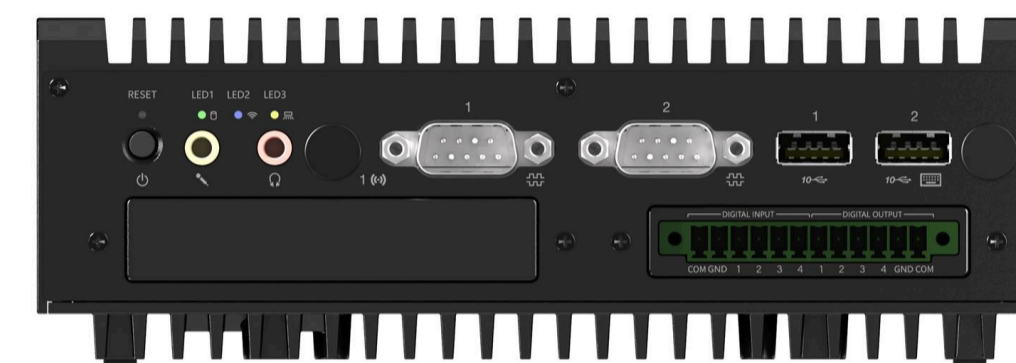
- AWS IoT Greengrass Certified
- Microsoft® Azure IoT Edge Certified
- Red Hat Enterprise Linux Certified
- Ubuntu Core Certified
- Ubuntu Server Certified

SOFTWARE**Operating System**

Windows® 10 IoT Enterprise LTSC 2021, English

ACCESSORIES**Bundled Accessories**

IP50 Dust Cover Kits

MODEL**Product** : ThinkEdge™ SE10-I**TopSeller** : Yes**EAN / UPC / JAN:** 197528817811**Announce Date:** 2023-07-07**End of Support** : 2030-01-19

Product image is a sample, it may not match the real color of this model

Note:

[1] M.2 PCIe Gen 4 SSD in a M.2 PCIe Gen 3 slot runs at PCIe Gen 3 speeds.

[2] The system dimensions may vary depending on configurations.

[3] The system weight is approximate and based on results in Lenovo lab, which varies depending on the source of component, variance of the distribution of each component, and manufacturing process. It may not be the exact weight for each specific model.

[4] Wi-Fi M.2 card and Wi-Fi antenna are pre-configured only.

[5] eSIM function only works on Win10 IoT LTSC.

[6] Nano SIM slot only function with optional 4G WWAN. Card holder is optional, card holder only comes with card.

- Please refer to the official [Lenovo store website](#) or contact a local Lenovo sales representative or authorized business partner for current inventory and purchase options.
- Lenovo reserves the right to change specifications without notice.