

MPN: RAS200BL

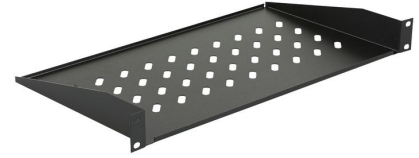
# by Logon 1U 19" D=250mm RACK MOUNT SHELF BLACK

Model: Logon

19" 2 point connected rack mount shelves for all cabinets

Dimensions(mm): W: 486 x D: 250 x H: 44

Maximum static load(kg): 30



Color: RAL 9005

Rack mounts with 2 point connections are cabinet shelves adaptable to all 19" cabinets and bearing ventilation slots thereon.

In case of need 2 side brackets with adjustable depth may be added to the back.

## Specifications

<b>Features</b>	<b>Compatible rack width</b>	19 "	
	<b>Easy mounting</b>	Yes	
	<b>Maximum weight capacity</b>	30 kg	
	<b>Mounting hole shape</b>	Oval	
	<b>Number of attachment points</b>	2	
	<b>Perforated</b>	Yes	
	<b>Preassembled</b>	Yes	
	<b>Product colour</b>	Black	
	<b>Rack capacity</b>	1U	
	<b>RoHS compliance</b>	Yes	
	<b>Type</b>	Fixed Shelf	
	<b>Other features</b>	<b>Dimensions (WxDxH)</b>	486x250x44 mm
		<b>Rack mounting</b>	Yes
<b>Static load</b>		30 Kg	
<b>Packaging content</b>	<b>Cage nuts included</b>	Yes	
	<b>Screws included</b>	Yes	
<b>Vendor information</b>	<b>Brand Name</b>	Lanview	
	<b>Warranty</b>	5 Year(s)	