



**Jabra®**  
YOU'RE ON

**CLEAR TALK,  
HANDS FREE CALLS**

### INTUITIVE FEATURES IN THE PALM OF YOUR HAND.

Get all the features you need when all you need are your hands. Jabra Mini gives you the freedom you need to taste a little more of life.

Jabra Mini puts hands free communication in less than the palm of your hand. The compact design of this tiny Bluetooth® headset does not put a limit to the intuitive functionality of Jabra Mini. Turning the headset on/off, answering or rejecting calls and controlling the volume is just a matter of pushing the right button. Jabra Mini also has a built-in voice guidance to tell you how to effortlessly pair your devices and to notify you when you need to recharge your headset. To extend the headset's battery power, the Power Nap feature automatically turns off your headset after 60 minutes of inactivity. To wake up your Jabra Mini, you just need to push the answer/end button.

Despite the small size of Jabra Mini, you can still enjoy the benefit of crystal clear sound quality of Jabra's headsets. In fact, you can easily listen to and stream your favorite multimedia (A2DP) whenever you feel like it. Jabra Mini has been designed for all-day hands free wearing – with softly molding eargels and/or an adjustable earhook – so you're always getting a custom fit.

With Jabra Mini you get access to the additional features in Jabra Assist app which also helps you to find your headset with the Find My Jabra geotagging feature in case you ever misplace it.



### REASONS TO CHOOSE THE JABRA MINI

- Stream multimedia – GPS, music & podcasts
- Spoken battery and connection status
- Power nap – battery saving mode



FIND MY JABRA  
With the Jabra Assist app  
For iOS and Android



JABRA.COM



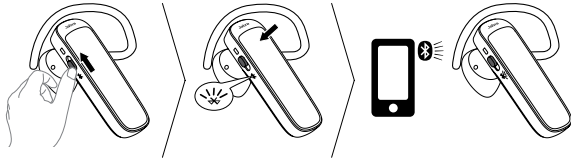
LEARN MORE!

## QUICK START GUIDE - GET STARTED UNDER 5 MINUTES

### 1 CONNECTING

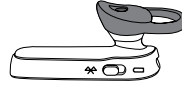
#### CONNECTING WITH A BLUETOOTH DEVICE

1. Turn the headset on (set the **on/off** switch to the on position).
2. Press and hold (3 secs) the **answer/end** button until the *Bluetooth* indicator flashes blue and pairing mode is announced in the headset.
3. Follow the voice-guided pairing instructions to pair to your *Bluetooth* device.



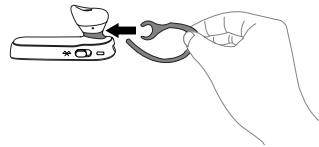
### 2 WEARING

The headset can be worn with or without the earhook.

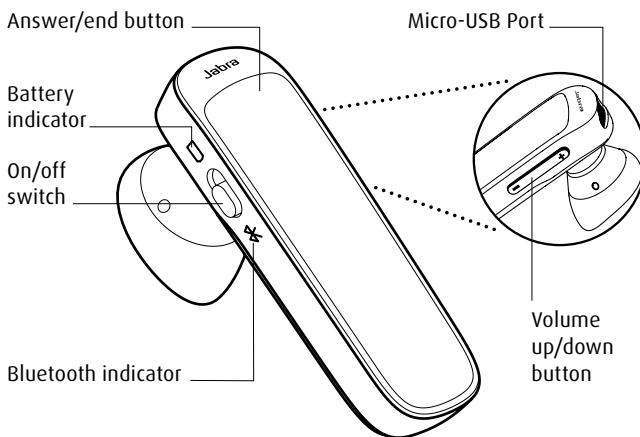


#### ATTACHING THE EARHOOK

The earhook can be attached to the headset for the perfect fit.



### 3 USING



	Answer/end call	Tap the <b>answer/end</b> button
	Reject call	Double-tap the <b>answer/end</b> button
	Redial last number	Double-tap the <b>answer/end</b> button
	Adjust speaker volume	Tap the <b>volume up</b> or <b>volume down</b> button
	Mute/un-mute microphone	Tap both the <b>volume up</b> and <b>volume down</b> button at the same time

It takes approx. 2 hours to fully charge the battery

#### IMPORTANT

Download the Jabra Assist App for your Android™ or iOS device to enhance your Jabra experience.

### FEATURES AND SPECIFICATIONS

- Voice guidance – tells you how to pair your device, your battery- and connection status
- Wireless streaming of your favorite multimedia – GPS, music & podcasts (A2DP enabled devices)
- HD voice\* for better sound experience
- Voice dialing – activate the voice control in your mobile device with a press on the headset
- Power Nap - battery saving mode
- Up to 9 hours talk time and up to 9 days standby time
- In the box: 1 Jabra Mini headset, 1 extra eargel, 1 extra earhook, 1 USB cable, 1 quick start guide
- Weighs only 10 g (0.353 oz)
- H 47.1 x W 14.7 x D 9.9mm (H 1.85 x W 0.58 x D 0.39 in)

\* Device and network dependent