

## NEED MORE HELP?

For all support go to [jabra.com/support](http://jabra.com/support)



QUICK START



FAQ



VIDEOS



DOWNLOADS



TROUBLESHOOTING



CONTACT SUPPORT

[jabra.com/halofree](http://jabra.com/halofree)

81-04111 B

JABRA HALO FREE

**Jabra**<sup>®</sup>

**GET STARTED IN UNDER**

**5**  
**MINUTES**

[jabra.com/halofree](http://jabra.com/halofree)

BC

A BRAND BY

**GN Netcom**

---

© 2016 GN Netcom. All rights reserved. Jabra® is a registered trademark of GN Netcom. All other trademarks included herein are the property of their respective owners. The Bluetooth® word mark and logos are owned by the Bluetooth SIG, Inc. and any use of such marks by GN Netcom is under license. (Design and specifications subject to change without notice).

---

MADE IN CHINA  
MODEL: OTE29

FCC ID: BCE-OTE29  
IC: 2386C-OTE29

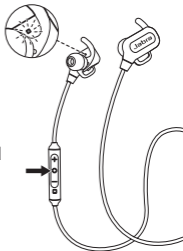


ENGLISH.....	1
FRANÇAIS.....	5
ESPAÑOL.....	9
PORTUGUÊS .....	13

# 1 HOW TO CONNECT

## CONNECT TO MOBILE PHONE

1. Ensure the headset is turned on, and that Bluetooth is enabled on your mobile phone.
2. Press and hold (3 secs) the Multi-function button on the headset until the LED flashes blue.
3. Wear the headset and follow the voice-guided connection instructions to connect to your mobile phone.



# 2 HOW TO CHANGE

ENGLISH

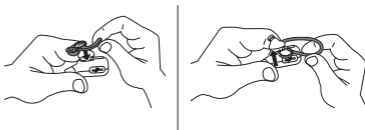
## SELECT THE CORRECT EARGEL SIZE

For the optimal audio experience, try each of the different EarGel sizes. The fit should feel tight and secure in your ear.

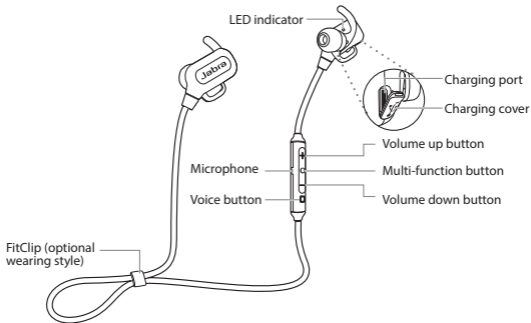


## SELECT THE CORRECT EARWING OR EARHOOK (OPTIONAL)

For the most secure fit, try each of the different EarWing or EarHook styles.






# 3 HOW TO USE



## DID YOU KNOW?

The Jabra Assist app can help you locate your headset using GPS tracking. Download the Jabra Assist app for your Android™ or iOS device.

	On/off	Press and hold (3 secs) the <b>Multi-function</b> button
	Answer call	Tap the <b>Multi-function</b> button
	End call	Tap the <b>Multi-function</b> button
	Reject call	Double-tap the <b>Multi-function</b> button
	Adjust volume	Tap the <b>Volume up/down</b> buttons
	Activate Siri™/ Google Now™/ Cortana™	Tap the <b>Voice</b> button
	Mute/unmute microphone	Tap the <b>Voice</b> button, when on a call

## CHARGE THE HEADSET

Pull open the charging cover to expose the USB charging port. It takes approx. 2 hours to fully charge the battery. To protect against water damage, ensure the charging cover is firmly in place before use.