

**PHILIPS**

Heater

5000 Series

CX5120



User manual

# Contents

- 1 Important ..... 1**
  - Safety ..... 1
  - Electromagnetic fields (EMF) ..... 3
  - Recycling ..... 3
  - Simplified EU declaration of conformity ..... 3
- 2 Your Heater ..... 4**
  - Product overview ..... 4
  - Controls overview ..... 5
- 3 Using the Heater ..... 6**
  - Wi-Fi connection ..... 6
  - Turning on and off ..... 7
  - Switching the mode ..... 7
  - Setting the temperature ..... 8
  - Using the timer function ..... 9
  - Oscillation ..... 9
  - Activating the display screen ..... 10
  - Using the light on/off function ..... 10
- 4 Cleaning and maintenance ..... 10**
- 5 Storage ..... 11**
- 6 Troubleshooting ..... 11**
- 7 Warranty and support ..... 14**

# 1 Important

---

## Safety

Read this user manual carefully before you use the appliance, and save it for future reference.

### Danger

- Do not let any liquid or flammable detergent enter the appliance, to avoid electric shock and/or a fire hazard.
- In order to avoid overheating and fire, do not cover the device.



### Warning

- Some parts of this product can become very hot and cause burns. Continuous supervision has to be given where children and vulnerable people are present.
- This appliance can be used by children aged from 8 years and above and persons with reduced physical, sensory or mental capabilities or lack of experience and knowledge if they have been given supervision or instruction concerning use of the appliance in a safe way and understand the hazards involved.
- Children aged from 3 years and less than 8 years shall only switch on/off the appliance provided that it has been placed or installed in its intended normal operating position and they have been given supervision or instruction concerning use of the appliance in a safe way and understand the hazards involved.
- Children aged from 3 years and less than 8 years shall not plug in, regulate and clean the appliance or perform user maintenance.
- Children of less than 3 years should be kept away unless continuously supervised.
- Children shall not play with the appliance.
- Cleaning and maintenance shall not be made by children without supervision.

- Do not use this heater in small rooms when they are occupied by persons not capable of leaving the room on their own, unless constant supervision is provided.
- When device working in heating mode, the surface temperature will gradually increase. Do not touch the air outlet to avoid being burn.
- To reduce the risk of fire, keep textiles, curtains, beddings or any other flammable material a minimum distance of 1 m from the air outlet. Do not block the air inlet and outlet, e.g. by placing items on the air outlet or in front of the air inlet.
- Do not insert fingers, sticks or other objects into the machine, in order to avoid electric shocks, physical injury or fire.
- Device has heating component. Do not use the appliance near gas appliances, fireplaces.
- Do not spray any flammable materials such as insecticides or fragrance around the appliance.
- Do not use if there are visible signs of damage to the device, the plug, the power cord.
- Do not use this device if it has been dropped.
- If the power cord is damaged, you must have it replaced by Philips, a service center authorized by Philips, or similarly qualified persons in order to avoid a hazard.

## Caution

- In order to avoid a hazard due to inadvertent resetting of the thermal cut-out, this appliance must not be supplied through an external switching device, such as a timer, or connected to a circuit that is regularly switched on and off by the utility.
- The device must not be located immediately below a socket outlet.
- Only plug in socket on the wall, do not use extension cord.
- Always place and use the appliance on a dry, stable, and horizontal surface.
- Do not use the appliance in surroundings with high humidity such as the bathroom, toilet, kitchen, swimming pool, or any outdoor environment.

- Do not sit or stand on the appliance. Do not knock against appliance. Do not place anything on top of the appliance.
- Always unplug the appliance when you want to move, clean appliance, or carry out other maintenance.
- The appliance is only intended for household use under normal operating conditions.
- Standard WiFi interface based on 802.11b/g/n at 2.4 GHz with a maximum output power of 64 mW EIRP.

---

## Electromagnetic fields (EMF)

This appliance complies with the applicable standards and regulations regarding exposure to electromagnetic fields.

---

## Recycling

This symbol means that this product shall not be disposed of with normal household waste (2012/19/EU).



Follow your country's rules for the separate collection of electrical and electronic products. Correct disposal helps prevent negative consequences for the environment and human health.

---

## Simplified EU declaration of conformity

Hereby, DAP B.V. declares that the radio equipment type CX5120 is in compliance with Directive 2014/53/EU. The full text of the EU declaration of conformity is available at the following internet address: **[www.philips.com](http://www.philips.com)**.

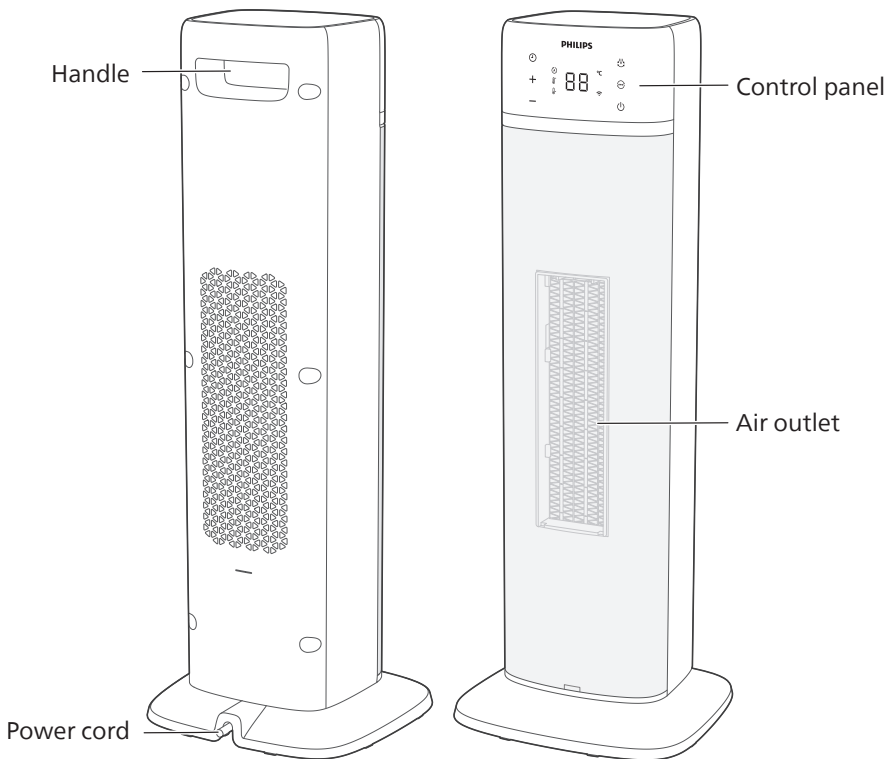
## 2 Your Heater

Congratulations on your purchase, and welcome to Philips!

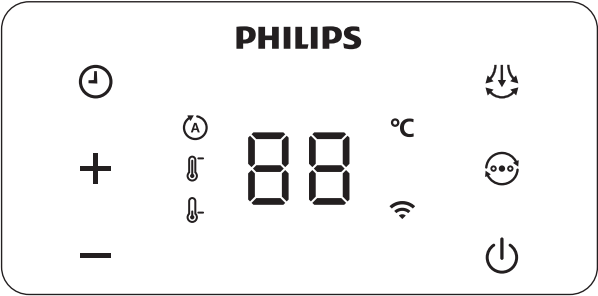
To fully benefit from the support that Philips offers, register your product at [Home.id/welcome](https://home.id/welcome).

---

### Product overview



# Controls overview



## Control buttons

	Timer button		Temperature increase button
	Temperature decrease button		Oscillation button
	Mode switch button		Power on/off button

## Display panel

	Auto mode		High mode
	Low mode		Wi-Fi indicator



## 3 Using the Heater

---

### Wi-Fi connection

---

#### Setting up the Wi-Fi connection for the first time

- 1 Download and install the Philips “Air+” app from the **App Store** or **Google Play**.
- 2 Put the plug of the Heater in the power socket and touch  to turn on the Heater.  
↳ The Wi-Fi indicator  blinks for the first time.
- 3 Make sure that your smartphone or tablet is successfully connected to your Wi-Fi network.
- 4 Launch the “Air+” app and click on “**Connect a New Device**” or press the “+” button on the top of the screen. Follow the onscreen instructions to connect the Heater to your network.






#### Note:

- This instruction is only valid when the Heater is being set up for the first time. If the network has changed or the setup needs to be performed again, see Chapter “Reset the Wi-Fi connection” on page 6.
- If you want to connect more than one Heater to your smartphone or tablet, you have to do this one by one.
- Make sure that the distance between your smartphone or tablet and the Heater is less than 10 m without any obstructions.

---

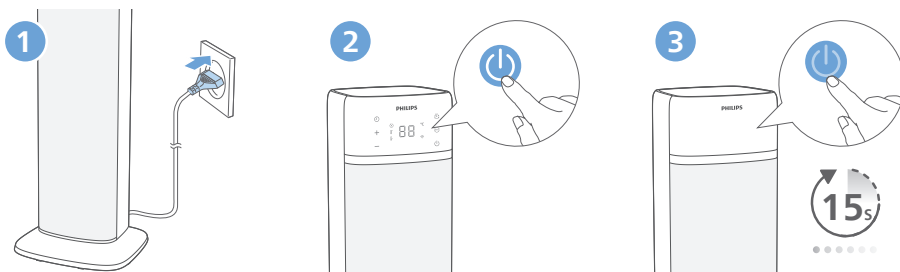
### Reset the Wi-Fi connection


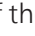
#### Note:

- Reset the Wi-Fi connection when your default network has changed.
- 1 Put the plug of the Heater in the power socket and touch  to turn on the Heater.
  - 2 Touch and hold  for 3 seconds until you hear a beep.  
↳ The Heater goes to pairing mode.  
↳ The Wi-Fi indicator  blinks.
  - 3 Follow the steps 3-4 in “**Setting up the Wi-Fi connection for the first time**” section.



## Turning on and off







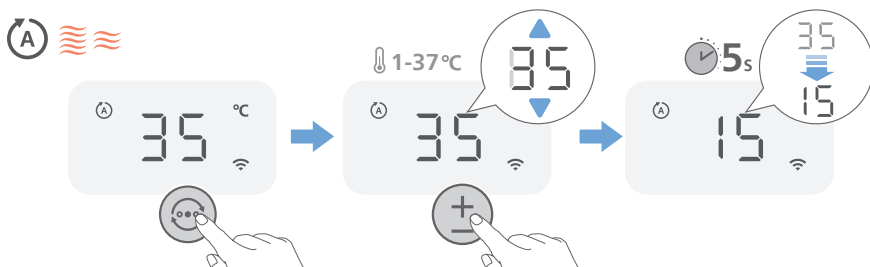
- 1 Put the plug in the power socket.
- 2 Touch the  button on the appliance to switch on the Heater. The appliance beeps.
- 3 Touch the  button again to switch off the Heater.  
↳ The appliance starts countdown for 15 seconds before switching off.

### Caution:

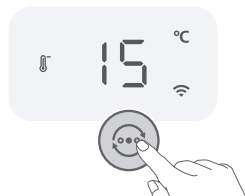
- When the Heater continuously runs for 16 hours without any operation, it will be forced to shut down for protection.

## Switching the mode

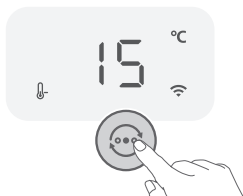
- Touch the  button switch the mode: Auto mode (  ), High mode (  ), Low mode (  ), and Ventilation mode.



**Auto mode:** In this mode, your device will do the work for you. Based on the sensor data that measures and tracks the temperature in your room, your device automatically selects the heating speed to keep your room comfortable.



**High mode:** High speed, quick results. When your device is in high speed mode, it operates on the highest speed for powerful, rapid heatup of the air in your room.



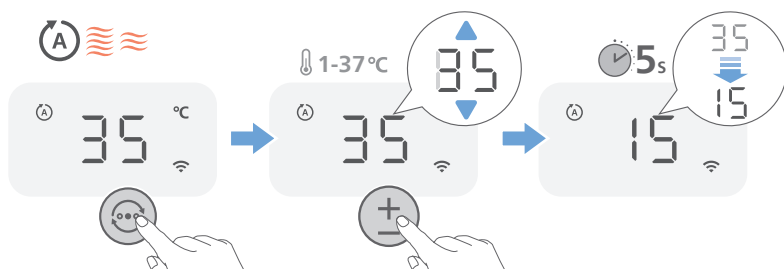
**Low mode:** When in Low mode, your device provides you with a slight comfortable heated breeze.



**Ventilation mode:** In ventilation mode the device can double as a fan on hot days. The heating will be turned off and the fan delivers a stream of air that's ideal for making warm rooms feel more comfortable.

---

## Setting the temperature



In the Auto mode, you can adjust the temperature by touching the **+** or **-** button. The temperature range is from 1°C-37°C.

---

## Using the timer function

Touch the ⌚ button to set operating hours of the appliance. The timer is available from **0** to **12** hours. 0 hour means no timer is set.

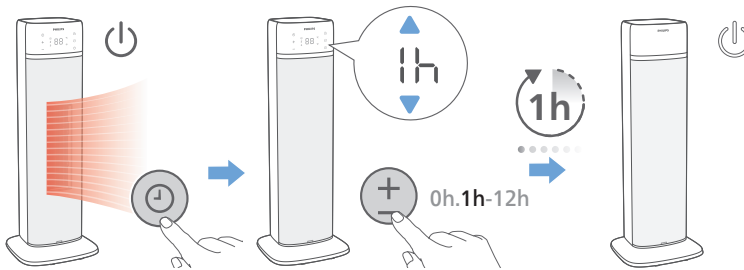
**Note:**

- Touch and hold the ⌚ button for 3 seconds to cancel the timer you have set.

After the set timer has elapsed:

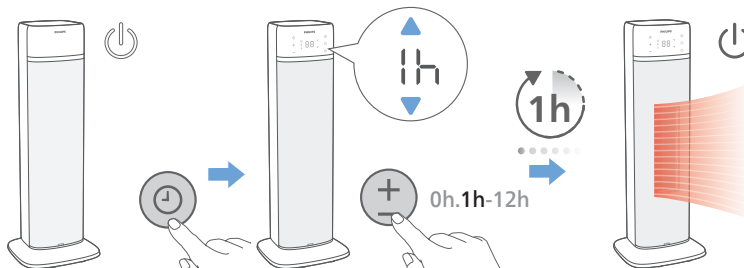
### In standby mode

- The Heater will be turned on automatically.



### In power on mode

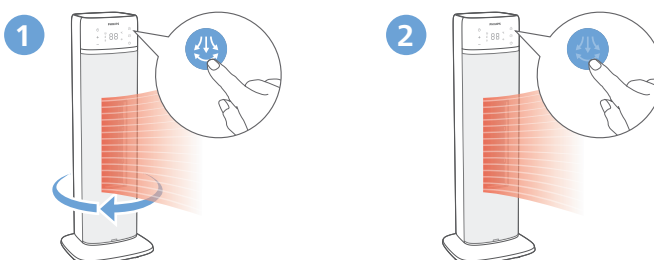
- The Heater will be off automatically.



---


## Oscillation

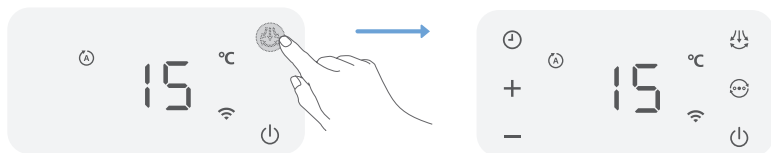
Touch the 🌀 button to activate the oscillation feature in your Heater.



---


## Activating the display screen

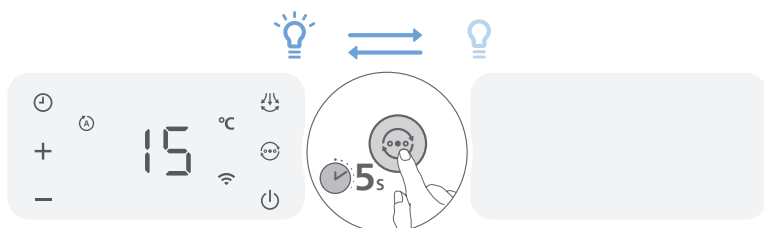
After the screen is off, you can either touch the  button, or any other button to wake up the screen.



---

## Using the light on/off function

You can touch and hold the  button for 5 seconds to turn on, or turn off the light of the display panel.



## 4 Cleaning and maintenance

### Note:

- Always unplug the appliance before you clean it.
- Never immerse the appliance in water or any other liquid.
- Never use abrasive, aggressive, or flammable cleaning agents such as bleach or alcohol to clean any part of the appliance.

Regularly clean the outside of the Heater to prevent dust from collecting.

- Use a soft, dry cloth to clean both the exterior of the appliance and the air outlet.

## 5 Storage

- 1 Turn off the appliance and unplug from the power socket.
- 2 Clean the appliance.
- 3 Store the appliance in a cool, dry location.
- 4 Always thoroughly wash hands after cleaning.

## 6 Troubleshooting

This chapter summarizes the most common problems you could encounter with the appliance. If you are unable to solve the problem with the information below, contact the Consumer Care Center in your country.

Problem	Possible solution
My heater is not working after plugging.	<ul style="list-style-type: none"><li>• The plug may not be connected properly to an electrical outlet. Check whether the plug is properly connected to a working electrical outlet.</li><li>• The appliance is equipped tip-over protection, ensure to locate the appliance in upright position and at flat surface.</li><li>• If the appliance doesn't produce warm airflow, check if it is on Ventilation mode.</li><li>• Check your temperature settings in Auto mode. When the set target temperature is lower than the ambient temperature, the heating function will not be triggered.</li></ul>
My heater is tripping during use.	<ul style="list-style-type: none"><li>• The power exceeds the home circuit load. Please unplug nearby high-power appliances on the same electrical outlet and try again.</li><li>• If your heater fails to power on again on a working electrical outlet, please contact Consumer Care Team in your country.</li></ul>

Problem	Possible solution
My heater suddenly stop working.	<ul style="list-style-type: none"> <li>• Check if the timer function of appliance is on .</li> <li>• In Auto mode, when the target temperature is reached, the heater will stop working, and work again when the ambient temperature is lower than the target temperature. In Low or High mode, the heater will stop working when the sensor detects the temperature reaches to 37 °C, and work again when the temperature becomes lower.</li> <li>• When the temperature exceeds the threshold of the thermal cut-off, the appliance will automatically cut off the power supply. Let the appliance cool down and check if air inlet/outlet is unobstructed before use again.</li> <li>• The heater is equipped with Auto shut off. Without further operation, the appliance will shut off after running for consecutive 16 hours.</li> </ul>
My heater is too loud.	<ul style="list-style-type: none"> <li>• Relocate the appliance and ensure it's on a stable, secure surface, and no foreign objects beneath it.</li> <li>• If there is abnormal sound, contact the Consumer Care Center in your country.</li> </ul>
My heater produces a strange smell.	<ul style="list-style-type: none"> <li>• The first few times you use the appliance, it may produce a plastic smell. This is normal on new appliance. However, if the appliance produces a burnt smell, turn off the appliance and unplug immediately, then contact the Consumer Care Center in your country.</li> </ul>
It takes a long time for my heater to heat up.	<ul style="list-style-type: none"> <li>• Set to higher target temperature in Auto mode or switch to High mode, the appliance will run at higher power and heat up in a shorter time.</li> <li>• Ensure the air inlet/outlet is clean and unobstructed.</li> </ul>
The ambient temperature display sometimes shows slight differences to other thermometers or my own perception of the temperature.	<ul style="list-style-type: none"> <li>• The ambient temperature can be influenced by various factors, including room size, ventilation conditions, and the distance between the thermometer and the heater.</li> <li>• Each type of the thermometer has its own measuring accuracy, which can lead to variations in temperature readings.</li> <li>• Occasionally, the residual warmth within the heater can result in a lag effect may cause slight variances when compared to other thermometers or your own sense of temperature.</li> </ul>

Problem	Possible solution
What do the codes on my appliance mean?	<ul style="list-style-type: none"> <li>• Error code "Eb" displays on the screen. The control panel has malfunctioned. Contact the Consumer Care Center in your country.</li> <li>• Error code "E5" displays on the screen. The temperature sensor has malfunctioned. Contact the Consumer Care Center in your country.</li> <li>• Error code "E6" displays on the screen. The appliance is overheating. Turn off the appliance and unplug. Let the appliance cool down for few minutes before use again.</li> <li>• Error code "E9" displays on the screen. It indicates the appliance is in tilted position. Turn off the appliance, ensure it's in the upright position and then power on again.</li> </ul>
The Wi-Fi setup is not successful.	<ul style="list-style-type: none"> <li>• If the router your appliance is connected to is dual-band and it is currently not connecting to a 2.4GHz network, please switch to another band of the same router (2.4GHz) and try to pair your Heater again. 5GHz networks are not supported.</li> <li>• Web authentication networks are not supported.</li> <li>• Check if the appliance is within range of the Wi-Fi router. You can try to place the Heater closer to the Wi-Fi router.</li> <li>• Check if the network name is correct. The network name is casesensitive.</li> <li>• Check if the Wi-Fi password is correct. The password is case sensitive.</li> <li>• Retry the setup with the instructions in the section "Wi-Fi connection".</li> <li>• The Wi-Fi connectivity can be interrupted by electromagnetic or other interferences. Keep the appliance away from other electronic devices that may cause interferences.</li> <li>• Check if the mobile device is in airplane mode. Make sure to have airplane mode deactivated when connecting to the Wi-Fi network.</li> <li>• Consult the help section in the app for extensive and up-to-date troubleshooting tips.</li> </ul>

## 7 Warranty and support

Versuni offers a two-year warranty after purchase on this product. This warranty is not valid if a defect is due to incorrect use or poor maintenance. Our warranty does not affect your rights under law as a consumer. For more information or for invoking the warranty, please visit our website **[www.philips.com/support](http://www.philips.com/support)**.

---

### Order parts or accessories

If you have to replace a part or want to purchase an additional part, go to your Philips dealer or visit **[www.philips.com/support](http://www.philips.com/support)**.

If you have problems obtaining the parts, please contact the Philips Consumer Care Center in your country.



Information requirements for electric local space heaters

Model identifier(s): CX5120					
Item	Symbol	Value	Unit	Item	Unit
Heat output	-	-	-	<b>Type of heat input, for electric storage local space heaters only (select one)</b>	
Nominal heat output	P <sub>nom</sub>	2.0	kW	manual heat charge control, with integrated thermostat	NA
Minimum heat output (indicative)	P <sub>min</sub>	1.1	kW	manual heat charge control with room and/or outdoor temperature feedback	NA
Maximum continuous heat output	P <sub>max, c</sub>	2.0	kW	electronic heat charge control with room and/or outdoor temperature feedback	NA
<b>Auxiliary electricity consumption</b>	-	-	kW	fan assisted heat output	NA
At nominal heat output	eI <sub>max</sub>	N/A	kW	<b>Type of heat output/room temperature control (select one)</b>	
At minimum heat output	eI <sub>min</sub>	N/A	kW	single stage heat output and no room temperature control	[no]
In standby mode	eI <sub>sb</sub>	0.001	kW	Two or more manualstages, no room temperature control	[no]
				with mechanic thermostat room temperature control	[no]
				with electronic room temperature control	[yes]
				electronic room temperature control plus day timer	[no]
				electronic room temperature control plus week timer	[no]
				<b>Other control options (multiple selections possible)</b>	
				room temperature control, with presence detection	[no]
				room temperature control, with open window detection	[no]
				with distance control option	[yes]
				with adaptive start control	[no]
				with working time limitation	[yes]
				with black bulb sensor	[yes]
Contact details	DAP B.V. Tussendiepen 4 a, 9206AD Drachten, The Netherlands				



PHILIPS and the Philips Shield Emblem are registered trademarks of Koninklijke Philips N.V. and are used under license.

This product has been manufactured by and is sold under the responsibility of Versuni Holding B.V., and Versuni Holding B.V. is the warrantor in relation to this product.  
2023 © Versuni Holding B.V.

CX5120\_user manual\_v1.0 (20/10/2023)

