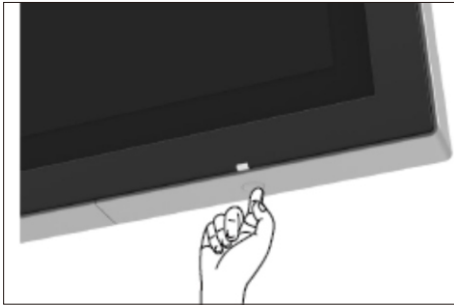
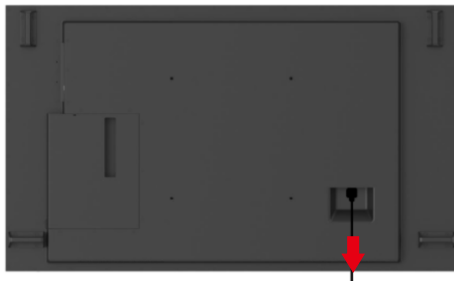


1. Disassembly Procedures:

S1 Turn off power..



S2 Unplug external cables(power cable and video cable) from the monitor.

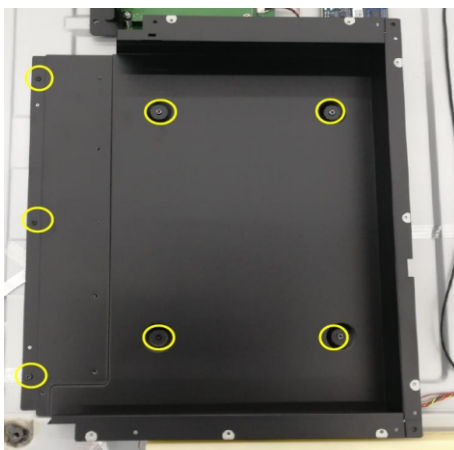


Use a screwdriver to remove 8pcs screws for releasing the handles. (Torque:15±0.5kgf)

S3 Remove 57pcs screws for unlocking the rear cover with the assembled unit.(Torque: 3±0.3kgf)

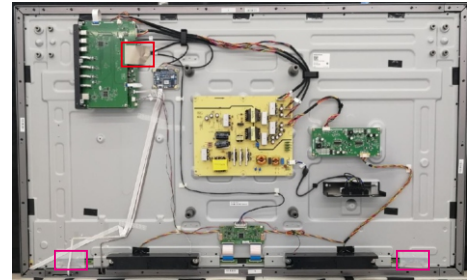


S4 Remove the handles and rear cover, then use a screwdriver to remove 7pcs screws for releasing the PC box.(Torque: 4.5±0.3kgf)



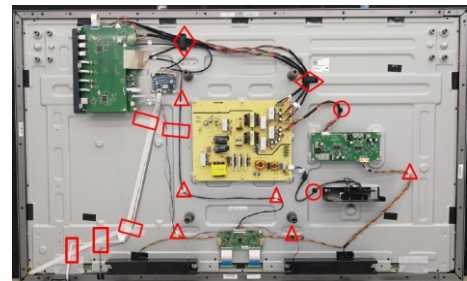
S5

Tear off 1pcs conductive tape for releasing main board, USB board and LVDS cable. Remove 2pcs white mylar tapes.



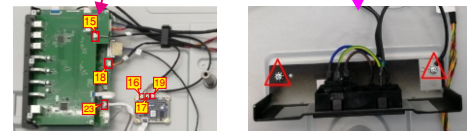
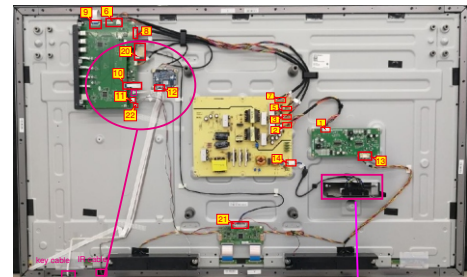
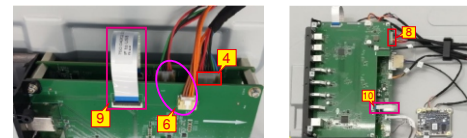
S6

Remove 5pcs white tapes, 2pcs big black wire locks, 2pcs small black wire locks and 6pcs white wire locks for unfixing the cables as the picture below shown.



S7

Disconnect all the cables as the picture below shown. Use a screwdriver to remove 2pcs screws for unlocking AC power outlet.(Torque: 4.5±0.5kgf)



S8

Use a screwdriver to remove 4pcs screws for unlocking the two speakers. (Torque: 4.5kgf±0.5)



Use a Hex-head screwdriver to remove 2pcs screws for unlocking RS232 connectors. (Torque: 4.5kgf±0.5)

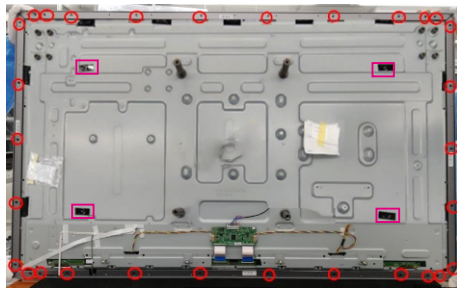
S9

Use a screwdriver to remove 12pcs screws for unlocking the USB board, IO holder and main board, remove 17pcs screws for locking the power board, driver board, touch board and T-Con board. (Torque: 4.5kgf±0.3) Disconnect all the FFC cables away from the T-con board.



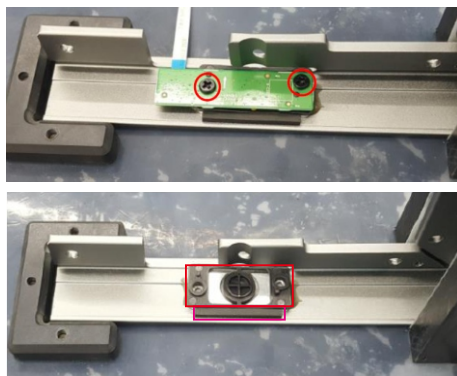
S10

Use a screwdriver to remove 30pcs screws (left: 5pcs, right :5pcs, top: 10pcs, bottom: 10pcs) for unlocking 4pcs strips, then tear off 4pcs shading tape. (Torque: 4.5±0.5kgfkgf)



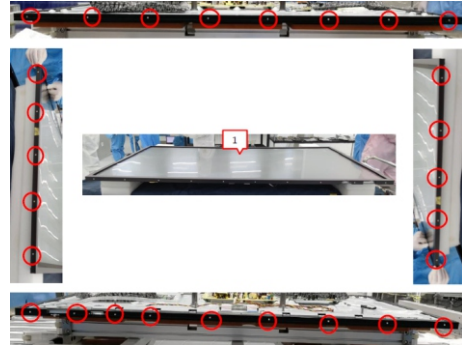
S11

Use a screwdriver to remove 2pcs screws for unlocking the key board and the holder with strip. (Torque: 2±0.3kgf)



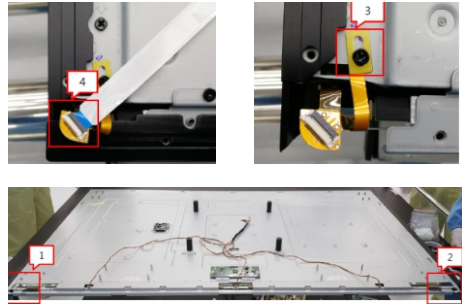
S12

Use a screwdriver to remove 27pcs screws for unlocking the front bezels(top, left, right, bottom). (Torque: 3±0.3kgf)



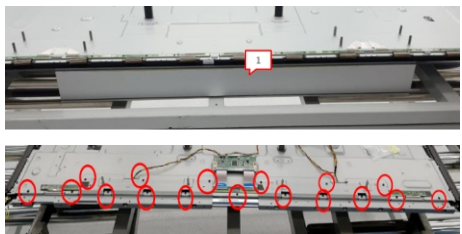
S13

Disconnect the touch connective cable with the monitor. Use a screwdriver to remove one screw for locking the grounding wire of the import-export cable, then disconnect the connective cable from the import and export cable.(Torque: 3±0.3kgf)



S14

Use a screwdriver to remove 17pcs(11+6) screws (Torque:6±0.3kgf) for unlocking the ED holder with the assembled unit.



S15

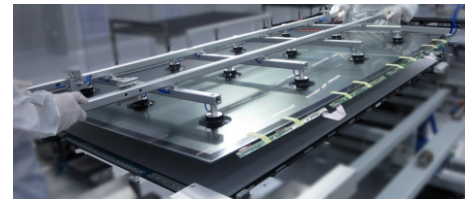
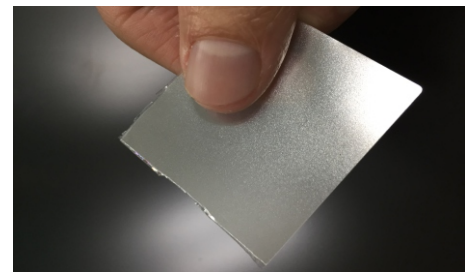
Use a screwdriver to remove 8pcs screws for unlocking the two bracket with the bottom ED holder. (Torque: 3±0.3kgf)



S16

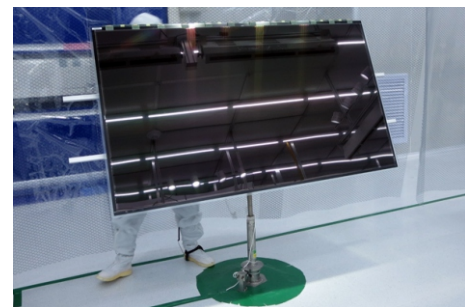
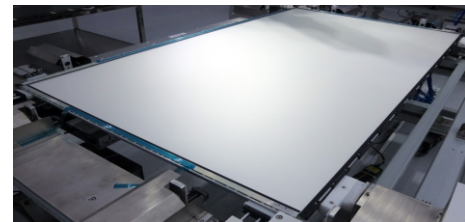
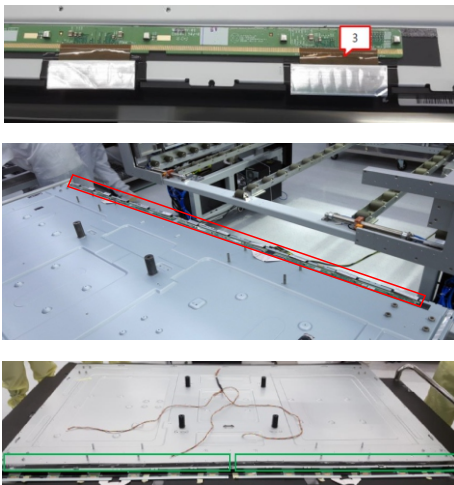
Remove all the bezel and strips and put them on a protective cushion. Open the IR board cover, then use a screwdriver to remove 2pcs screws for unlocking the IR board and holder with front bezel, then use a screwdriver to remove 2pcs screws for unlocking the light pipe with front bezel.

(Torque: $3\pm 0.3\text{kgf}$)



S17

Tear off 6pcs conductive foams on the specific position of the COF of the SB, then tear off all the tape and foams, and release the O/C SB away from the back bracket.

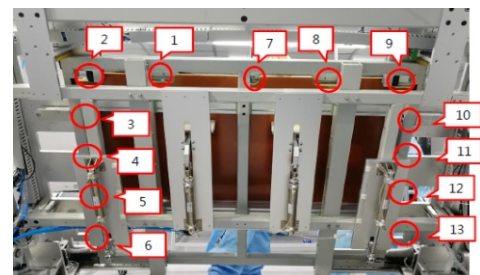
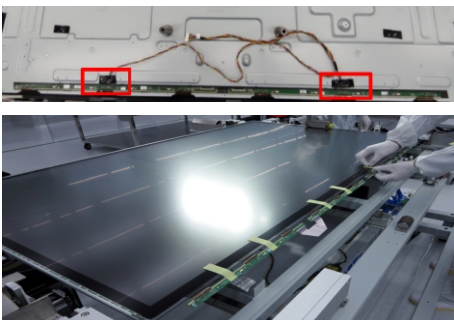


S19

Use a tripper to lift up the unit, then use a screwdriver to remove 13pcs screws for unlocking the ED unit, then use the tripper to put down the unit. (Torque: $3.5\pm 0.3\text{kgf}$)

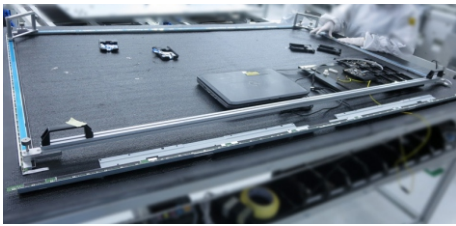
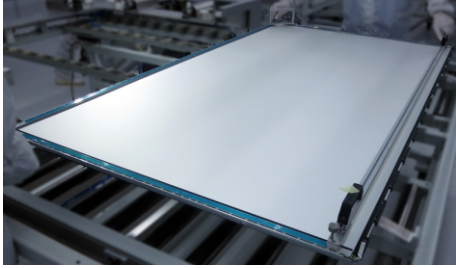
S18

Tear off 2pcs shading mylar tape for releasing the wire hole of the lighter bar. Turn over the panel module with the bracket for screen faced up. Use a thin film (such as Prism film) to disassemble the O/C with glass carefully, then remove the O/C with glass and put then on a protective cushion.



S20

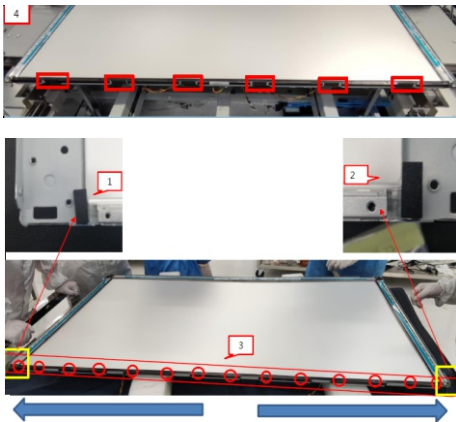
Use a ED holder fixture to fix the ED holders, then tear off all the tapes and rubbers, then lift up the ED holder unit for removing the ED unit, and then put the unit on a protective cushion.



S21

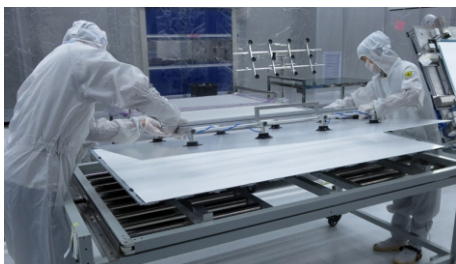
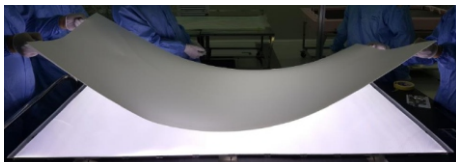
Tear off 6pcs acetate tapes and 2pcs shading foam, then use a screwdriver to remove 17pcs screws for unlocking the bottom-middle bezel.

(Torque: $3\pm 0.3\text{kgf}$)



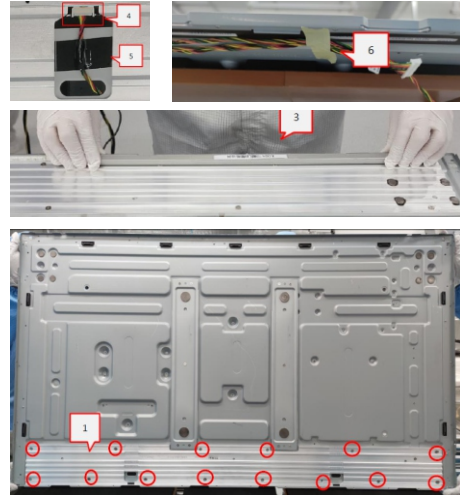
S22

Remove 1pcs DEBF film, 1pcs Diffuser film, 1pcs LGP, 1pcs Reflector film away from the back bracket.



S23

Tear off the tape, then disconnect the L/B cable from the connector, then tear off the L/B from the L/B heat sink. Use a screwdriver to remove 14pcs screws for unlocking the L/B heat sink with the back bracket. (Torque: $5\pm 0.5\text{kgf}$)



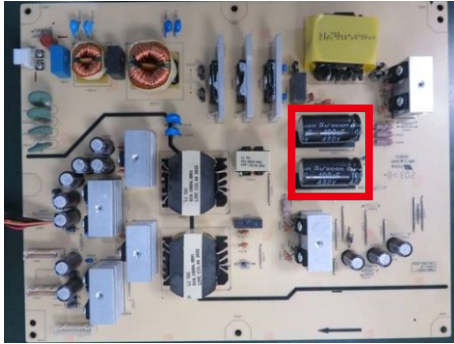
S24

Use a screwdriver to remove 10pcs screws for unlocking the two VESA brackets with back bracket. (Torque: $5\pm 0.5\text{kgf}$)

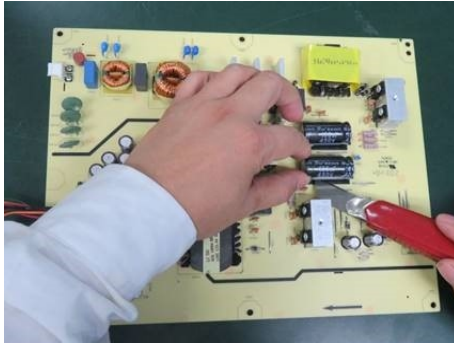


S25

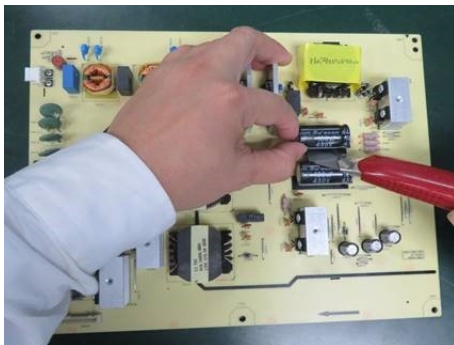
Remove electrolyte capacitors (red mark) from printed circuit boards.



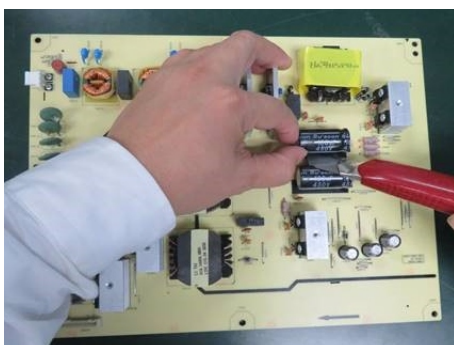
S25-1 Cut the glue between bulk cap. and PCB with a knife.



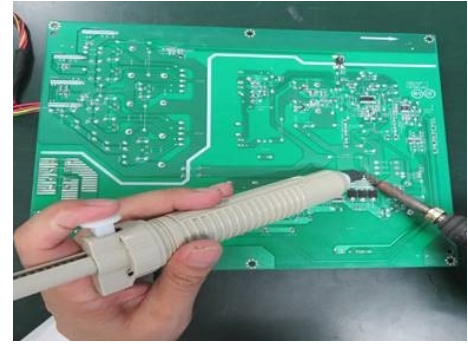
S25-2 Ensure cutting path within the glue, don't touch bulk cap. or PCB.



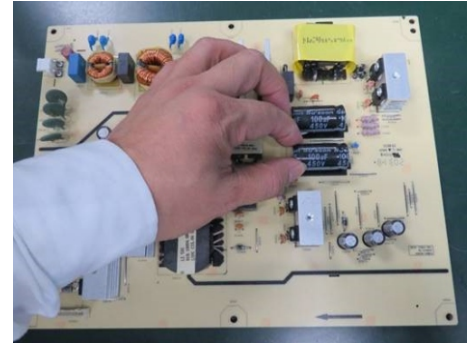
S25-3 Cut into the bottom of bulk cap. and pullit up carefully.



S25-4 Take out bulk cap. pin solder with soldering iron and absorber.



S25-5 Lift the bulk cap. up and away from the PCB.



2. Product material information

The following substances, preparations, or components should be disposed of or recovered separately from other WEEE in compliance with Article 4 of EU Council Directive 75/442/EEC.

| | |
|---|---|
| Capacitors / condensers (containing PCB/PCT) | No used |
| Mercury containing components | No used |
| Batteries | No used |
| Printed circuit boards (with a surface greater than 10 square cm) | Product has printed circuit boards (with a surface greater than 10 square cm) |
| Component contain toner, ink and liquids | No used |
| Plastic containing BFR | No used |
| Component and waste contain asbestos | No used |
| CRT | No used |
| Component contain CFC, HCFC, HFC and HC | No used |
| Gas discharge lamps | No used |
| LCD display > 100 cm ² | Product has an LCD greater than 100 cm ² |
| External electric cable | Product has external cables |
| Component contain refractory ceramic fibers | No used |
| Component contain radio-active substances | No used |
| Electrolyte capacitors (height > 25mm, diameter > 25mm) | Product has electrolyte capacitors (height > 25mm, diameter > 25mm) |

3. Tools Required

List the type and size of the tools that would typically can be used to disassemble the product to a point where components and materials requiring selective treatment can be removed.

Tool Description:

- Screwdriver (Phillip head) #1
- Screwdriver (Phillip head) #2
- Penknife
- Soldering iron and absorber