

PHILIPS

hue

**Secure battery  
camera**

Hue

End-to-end encryption

1080P HD video

Battery powered

Wall mount included



8719514492936



## Easy smart lighting

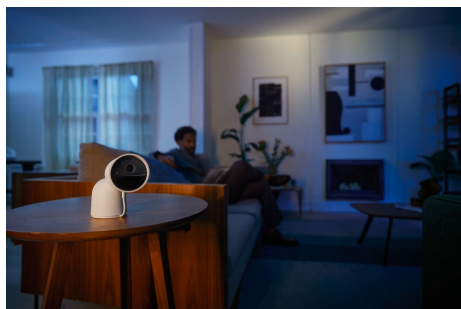
Let Philips Hue keep an eye on your home for you! Get a crisp, clear 1080p HD live stream, turn on the lights or send an alert to your mobile device when motion is detected, or even trigger a sound alarm with a tap in the Hue app. This wireless home security camera is easy to mount and install in any home.

### Easy smart lighting

- Get it all with the Philips Hue Bridge
- Monitor your home
- Make it seem like you're at home

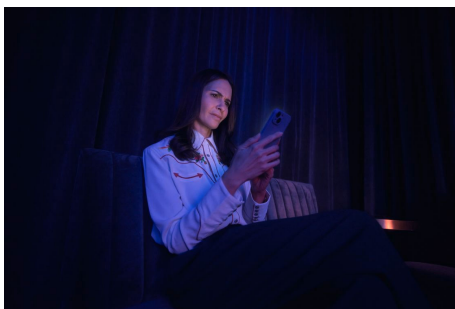
# Highlights

## Get it all with the Philips Hue Bridge



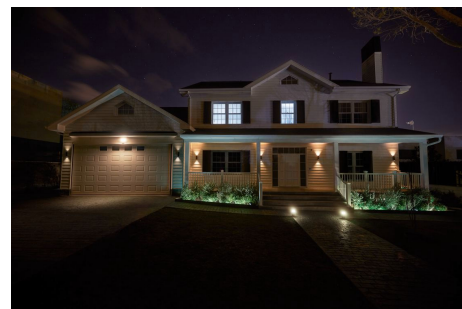
A Bridge gives you the full suite of smart home security features: light and sound alarms, the mimic presence automation and the ability to expand your home security – or smart lighting – set-up.

## Monitor your home



Receive notifications directly on your mobile device whenever your Secure camera detects motion. Create Activity or Package zones to get alerted depending on what triggers the motion, such as a person, animal, vehicle or package.

## Make it seem like you're at home



Use your Secure camera with the Mimic presence automation and the two-way talk function to add a layer of security to your home – and get some peace of mind in the process.

# Specifications

## Design and finishing

- Colour: White

## Extra feature/accessory incl.

- Batteries included: Yes

## Service

- Warranty: 2 year(s)

## Technical specifications

- Mains power: 100–240 V
- Battery type: FT755050P 3P
- IP code: IP65 | Dust-tight and jet-proof
- Class of protection: Class III – Safe Extra Low Voltage
- Image sensor camera: CMOS - F35
- Camera lens field of view (degrees): 141.2
- Camera adaptor: 12VDC/24DC

## The camera

- Max. video resolution: 1080P
- Video features: End to end encryption
- Motion detection: Yes
- Night Vision: Yes, with infrared LED
- Placement Camera: Back garden, Front garden
- Weatherproof: Yes
- Microphone: Yes
- Audio: Sound alarm, Two-way talk
- Audio (DB): 78
- Charging time: 7-8 h
- Operating temperature: -20°C to 45°C
- Connectivity protocol: Zigbee, WiFi (2.4GHz – 5GHz)
- Height: 7.7 cm
- Depth: 12.9 cm
- Sound alarm: Yes
- Two-way talk: Yes
- Rotatable angle: Yes

## What's in the box

- Camera power adaptor: 1
- Camera (battery): 1
- Camera 1.5 metre cable: 1

## What's supported

- Compatible with Effects feature: Yes
- Philips Hue App: Android 10.0 and above, iOS 16 or later
- Voice assistants (Hue Bridge required): Amazon Alexa, Google Assistant, Samsung SmartThings
- WiFi: Works without Wi-Fi
- Compatible with Hue Secure: Yes
- Defined support period: Minimum of 48 months after introduction date
- Communication protocol: Bluetooth, Zigbee
- Compatibility with third-party systems: Alexa, Google Home, Apple HomeKit, IFTTT, Klikaanklikuit, Matter, Samsung SmartThings, Sonos

# What's in the box



## Box specifications

### Packaging dimensions and weight

- EAN/UPC - product: 8719514492936
- Net weight: 0.58 kg
- Gross weight: 0.82 kg
- Height: 140 mm
- Length: 146 mm
- Width: 176 mm



© 2026 Signify Holding. All rights reserved. Signify does not give any representation or warranty as to the accuracy or completeness of the information included herein and shall not be liable for any action in reliance thereon. The information presented in this document is not intended as any commercial offer and does not form part of any quotation or contract, unless otherwise agreed by Signify. Philips and the Philips Shield Emblem are registered trademarks of Koninklijke Philips N.V.