

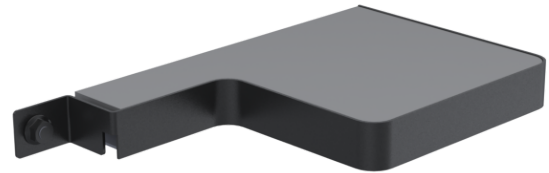
# Right hand shelf - 02

SPDS4010-02



The shelf is specifically designed to accommodate detection technology and overlay tray\* for RFID product discovery applications.

Compatible with HP Engage One Pro 19.5" and Samsung SH37F displays  
Supports fixed positioning (not height adjustable) 5-year warranty



## Product Specifications

|                               |                                |
|-------------------------------|--------------------------------|
| <b>Colour Name</b>            | Black                          |
| <b>Colour Type</b>            | Structured                     |
| <b>Device Brand</b>           | HP, Samsung                    |
| <b>Compatible device name</b> | HP Engage One Pro 19.5", SH37F |
| <b>Height adjustable?</b>     | No                             |
| <b>Main material</b>          | Metal                          |
| <b>Product Version</b>        | 1.0                            |
| <b>Distance to the wall</b>   | 1 mm                           |
| <b>Mounting Type</b>          | Wall                           |
| <b>Units per Box</b>          | 1                              |
| <b>Unit Weight</b>            | 0.46 kg                        |
| <b>Box Weight</b>             | 0.71 kg                        |
| <b>Warranty</b>               | 5 Years                        |

## Product Dimensions

|                    |          |
|--------------------|----------|
| <b>Unit Depth</b>  | 130.9 mm |
| <b>Unit Height</b> | 23 mm    |
| <b>Unit Weight</b> | 0.46 kg  |

## Package Dimensions

|                   |        |
|-------------------|--------|
| <b>Box Depth</b>  | 271 mm |
| <b>Box Height</b> | 75 mm  |
| <b>Box Width</b>  | 260 mm |



Made in the EU

[www.ergonomic.solutions](http://www.ergonomic.solutions)