

## 1. Disassembly Procedures

**S1** Turn off the monitor.

**S2** Place the monitor on a soft cloth or cushion.

Press and hold the stand release button at the back of the display.



**S3** Lift the stand assembly up and away from the monitor

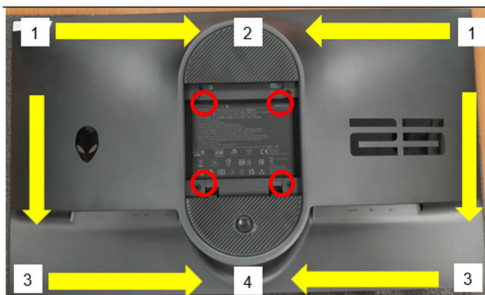


**S4** Unlock 4 screws on Rear Cover

Use hands or scraper bar to disassemble "Rear Cover" from monitor

**Notice the disassembly order:**

Top Side=> Right / Left Side =>Bottom Side

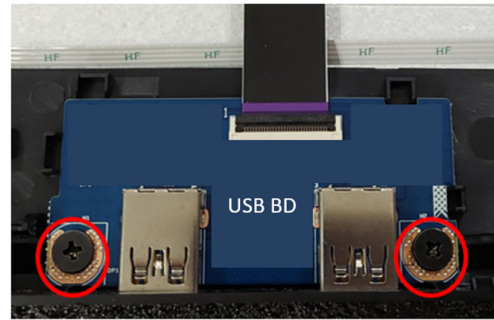


(Screw Torque: 8.0-10.0 kgf)

**S5** Unplug "USB HUB BD to USB BD FFC" from USB BD

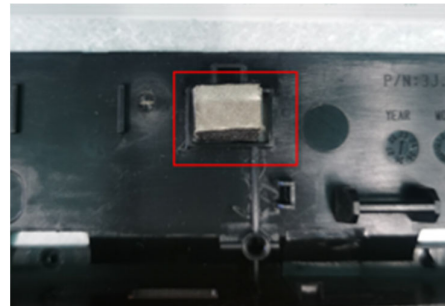
Unlock 2 screws on USB BD

Disassemble USB BD from Middle Frame



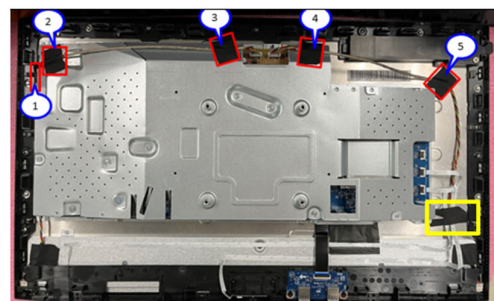
(Screw Torque: 3.5-4.0kgf)

**S6** Tear off a gasket from Panel



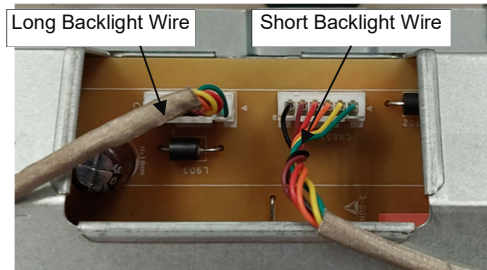
**S7** Tear off 1 tape from "LENS BD FFC", "KEY BD to I/F BD FFC" and "Short Backlight wire" on Panel (See yellow mark)

Tear off 5 tapes from "Short Backlight wire" and "Long Backlight wire"

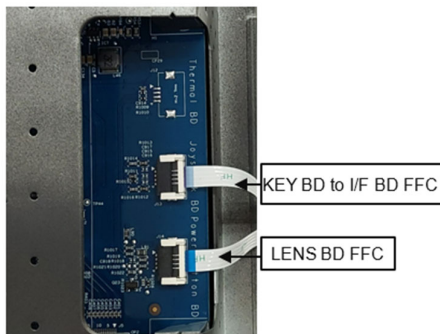


- S8** Unplug “Long Backlight wire” from LED Driver BD

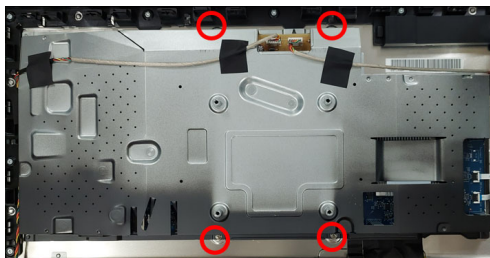
Unplug “Short Backlight wire” from LED Driver BD



- S9** Unplug “LENS BD FFC” from I/F BD  
Unplug “KEY BD to I/F BD FFC” from I/F BD



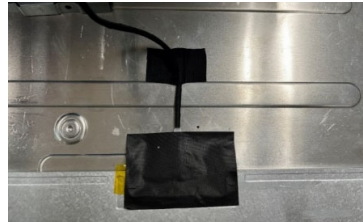
- S10** Unlock 4 screws to disassemble “Main SHD” from Panel



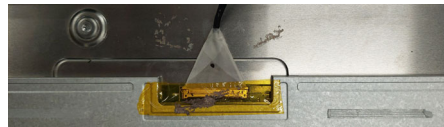
(Screw Torque: 3.5-4.0 kgf)

- S11** Tear off an acetate tape from “EDP wire” on Panel

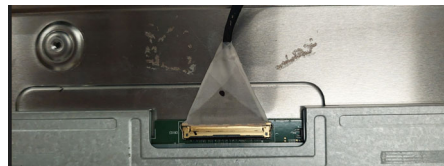
Tear off a conductive cloth from “EDP wire” on Panel



- S12** Tear off a yellow tape from “EDP wire” on panel



- S13** Unplug “EDP wire” from panel  
Take off “Main SHD” from Panel



- S14** Unlock 7 screws to disassemble Middle Frame and “ASSY BKT CHIN” (See blue marks)

Unlock 9 screws to disassemble Middle Frame and Panel (See red mark)

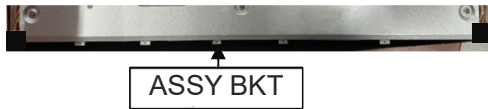
Disassemble Middle Frame from “ASSY BKT CHIN” and Panel



(Screw Torque-MF to Chin: 2.0±0.5 kgf)

(Screw Torque-MF to panel: 4.5±0.5 kgf)

- S15** Disassemble "ASSY BKT CHIN" from panel



- S16** Tear off an acetate tape from the connector of "Short backlight wire"

Unplug "Short Backlight Wire" from panel



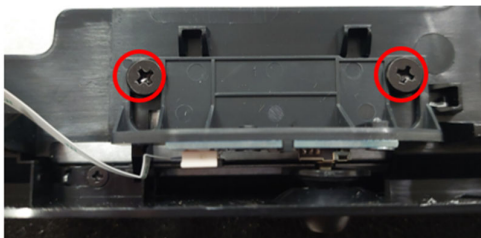
- S17** Tear off an acetate tape from the connector of "Long backlight wire"

Unplug "Long Backlight Wire" from panel



- S18** Unlock 2 screws to disassemble "HOLDER J-S" from Middle Frame

Take off "HOLDER J-S" from Middle Frame

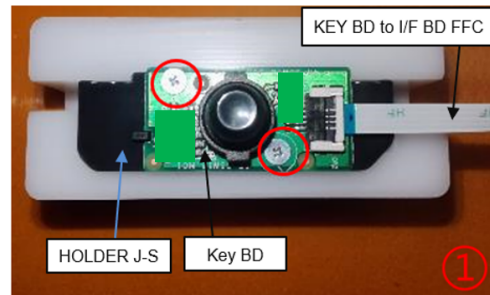


(Screw Torque: 3.5-4.0 kgf)

- S19** Unlock 2 screws to disassemble "Key BD" from "HOLDER J-S"

Take off "Key BD" from "HOLDER J-S"

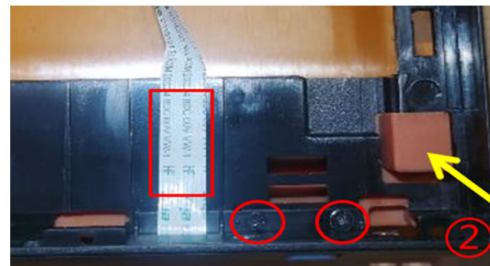
Unplug "Key BD to I/F BD FFC" from "Key BD"



(Screw Torque: 1.8~2.0 kgf)

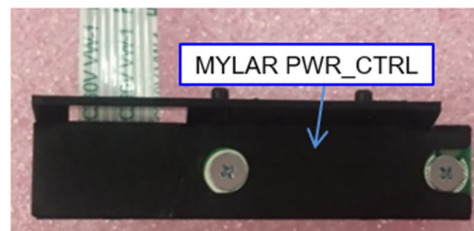
- S20** Tear off "LENS BD FFC" from Middle Frame

Unlock 2 screws to disassemble Power Button module from Middle Frame

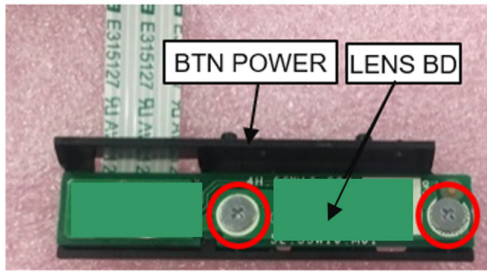


(Screw Torque: 1.8-2.0 kgf)

- S21** Tear off "MYLAR PWR\_CTRL" from "LENS BD"

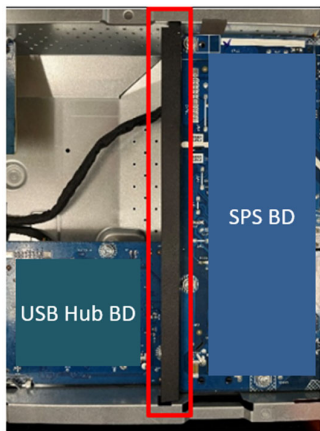


- S22** Unlock 2 screws to disassemble “LENS BD” from “BTN POWER”

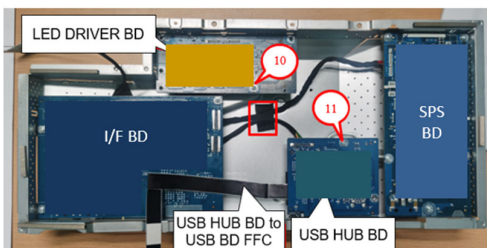
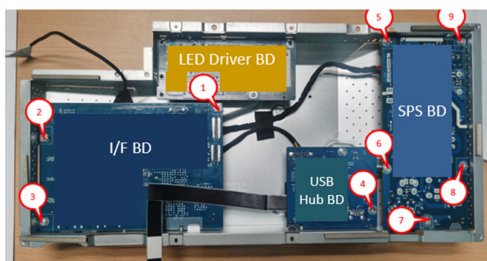


(Screw Torque: 1.1-1.3 kgf)

- S23** Disassemble “MYLAR PWR BD” from Main SHD



- S24** Unlock 11 PCBA screws  
Tear off a tape from Main SHD



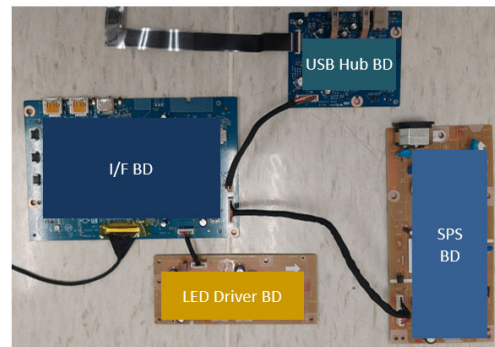
(Screw Torque: 8.5±1 kgf)

- S25** Disassemble USB HUB BD from Main SHD and unplug “I/F BD to USB HUB BD Wire” from USB HUB BD

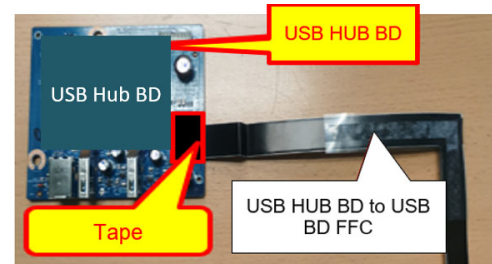
Disassemble LED Driver BD from Main SHD and unplug “I/F BD to LED Driver BD wire” from LED Driver BD

Disassemble I/F BD from Main SHD and unplug “I/F BD to SPS BD wire” from I/F BD

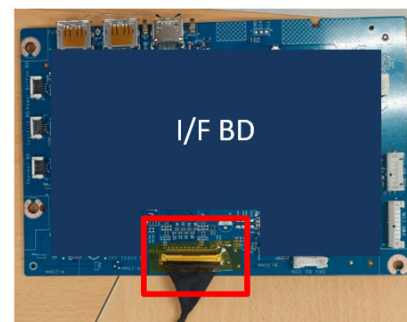
Disassemble SPS BD from Main SHD and unplug “I/F BD to SPS BD wire” from SPS BD



- S26** Tear a tape from USB HUB BD and unplug “USB HUB BD to USB BD FFC”



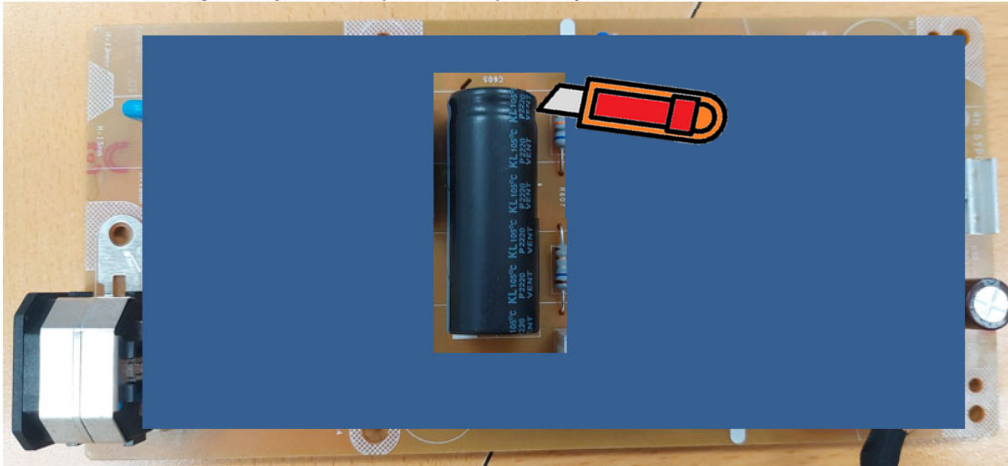
- S27** Tear off a yellow tape from I/F BD and unplug all wires from I/F BD



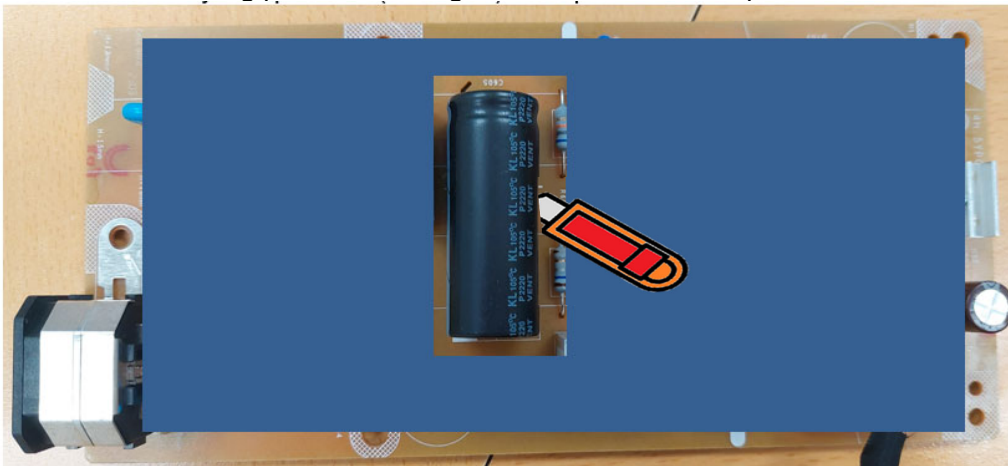
**S28** Remove electrolyte capacitors (red mark) from printed circuit boards



S28-1 Cut the glue between bulk cap. and PCB with a knife



S28-2 Ensure cutting path within the glue, don't touch bulk cap. or PCB





## 2. Product material information

The following substances, preparations, or components should be disposed of or recovered separately from other WEEE in compliance with Article 4 of EU Council Directive 75/442/EEC.

Capacitors / condensers (containing PCB/PCT)	No used
Mercury containing components	No used
Batteries	No used
Printed circuit boards (with a surface greater than 10 square cm)	Product has printed circuit boards (with a surface greater than 10 square cm)
Component contain toner, ink and liquids	No used
Plastic containing BFR	No used
Component and waste contain asbestos	No used
CRT	No used
Component contain CFC, HCFC, HFC and HC	No used
Gas discharge lamps	No used
LCD display > 100 cm <sup>2</sup>	Product has an LCD greater than 100 cm <sup>2</sup>
External electric cable	Product has external cables
Component contain refractory ceramic fibers	No used
Component contain radio-active substances	No used
Electrolyte capacitors (height > 25mm, diameter > 25mm)	Product has electrolyte capacitors (height >25mm, diameter > 25mm)

## 3. Tools Required

List the type and size of the tools that would typically can be used to disassemble the product to a point where components and materials requiring selective treatment can be removed.

Tool Description:

- Screwdriver
- Scraper Bar
- Penknife
- Soldering iron and absorber