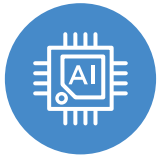


# IDEAPAD 5i Pro (16")

## Forged to perform.

With the blazing-fast speeds of the latest 12<sup>th</sup> Generation Intel® Core™ i7 H-series processors and discrete Intel® Arc™ graphics, the Lenovo IdeaPad 5i Pro is a powerful performer perfect for content creation and gaming. With Thunderbolt™ 4.0 here, connect and power your devices and transfer your files at incredible speeds, while Lenovo AI Engine helps you manage your power and battery life intelligently. Create bigger and better on a 16:10 display with a 2.5K resolution and a 120 Hz refresh rate, certified by TÜV for blue light eye safety.

### WHY YOU SHOULD BUY THE LENOVO IDEAPAD 5i PRO (16")



#### Piercing performance

Backed by 12<sup>th</sup> Generation Intel® Core™ i7 H-series processors, the IdeaPad 5i Pro 16" has blazing-fast speeds for high-powered computing and gaming. A built-in discrete Intel® Arc™ graphics card means more great gaming, while smart power distribution via Lenovo AI Engine boosts battery life and enhances performance when you need it most. Get the power to perform with the IdeaPad 5i Pro 16".



#### Show-stopping cinema

A 2.5K 16" 120 Hz refresh rate screen makes the IdeaPad 5i Pro 16" a powerful gaming and creativity machine. Its 16:10 display ratio and 90% AAR give you greater vertical resolution to code, write, edit, and simply do more, while 100% sRGB delivers you vivid color accuracy so your browsers, applications, and software all look exactly the way they should.



#### Smooth streaming and safe viewing

Bid goodbye to laggy and buffering streams with Lenovo's Super Resolution. The technology reduces bandwidth demand and maintain smooth video output in real-time to improve your video conferencing, online classroom, and video call quality. And with TÜV Eyesafe® certification for blue light, you can keep your eyes safe on long days of productivity without trading out any color accuracy.



#### Ultra-fast data and power connectivity

Thunderbolt™ 4.0 is here and it's storming onto the scene. Amplify your power delivery, data transferring, and display output capabilities with this powerful machine. Up to 40 Gbps bandwidth moves your data to and from storage quickly, and you can connect up to five devices that can all be powered through one port, incredibly. The laptop also boasts another full-function USB Type-C™, as well as plenty of USB Type-A ports plus HDMI™ and SD.



[WWW.LENOVO.COM](http://WWW.LENOVO.COM)



Lenovo

# IDEAPAD 5i Pro (16")

## SPECIFICATIONS

IdeaPad 5 Pro 16IAH7\*

### PERFORMANCE

#### Processor

Intel® Core™ i7-12700H  
Intel® Core™ i5-12500H

#### Operating System

Windows 11 Home

#### Graphics

Discrete GPU : TBD  
UMA GPU : Intel® Integrated Graphics

#### Memory

LPDDR5 : 16 GB, Dual Channel

#### Storage

M.2 PCIe SSD : 512 GB / 1 TB

#### Camera

IR FHD Camera with ToF Sensor

#### Audio

2 x 2W Speakers with Dolby Atmos®

#### Battery<sup>1</sup>

75Whr Polymer

#### Discrete GPU

MobileMark® 2018 : 7.05 Hours

1080p Video Playback : 13.34 Hours

Rapid Charge Boost : 15 min. @ 2 Hours<sup>2</sup>

#### UMA GPU

MobileMark® 2018 : 9.4 Hours

1080p Video Playback : 15.85 Hours

Rapid Charge Express : 15 min. @ 3 Hours<sup>2</sup>



### DESIGN

#### Display

16" 2.5K (2560 x 1600) IPS, 16:10, 350 nits, 120 Hz, 100% sRGB, TÜV Cert.

16" 2.5K (2560 x 1600) IPS, 16:10, 350 nits, 60 Hz, 100% sRGB, TÜV Cert.

#### Dimensions (W x D x H)

(mm) : 356 x 251 x as thin as 16.9  
(inches) : 14.01" x 9.88" x as thin as 0.66"

#### Weight

Starting at 1.95 kg (4.30 lbs)

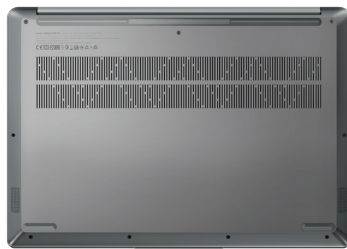
#### Colors

Storm Grey  
Cloud Grey

<sup>1</sup> All battery life claims are approximate and based on results using the MobileMark® 2018 v1.0.2.46 battery life benchmark test. Actual battery life will vary and depends on many factors such as product configuration and usage, software use, wireless functionality, power management settings, and screen brightness. The maximum capacity of the battery will decrease with time and use.

<sup>2</sup> Rapid Charge Express and Rapid Charge Boost can be activated in State S4 (sleeping states) and State S5 (shutdown or off state).

<sup>3</sup> The actual transfer speed of the USB 3.2 will vary and, depending on many factors, such as the processing capability of host and peripheral devices, file attributes and other factors related to system configuration and your operating environments, will be slower than a speed of 20 Gbit/s.



### CONNECTIVITY

#### WLAN

Up to WiFi 6 (2x2 802.11 ax/ac/a/b/g/n)

#### Bluetooth\*

Up to Bluetooth 5.1

#### Input/Output (I/O) Ports

##### Discrete GPU

##### Discrete Graphic Card SKU

1 x USB 3.2 Gen 2<sup>3</sup> Type-C™ (full-function with Thunderbolt™ 4.0)

2 x USB 3.2 Gen 1<sup>3</sup> Type-A

1 x HDMI™ 2.0

1 x SD Card Reader

1 x Audio Jack

1 x Square DC-In

##### UMA GPU

1 x USB 3.2 Gen 2<sup>3</sup> Type-C™ (full-function with Thunderbolt™ 4.0)

1 x USB Type-C™ (support power delivery and USB 2.0)

2 x USB 3.2 Gen 1<sup>3</sup> Type-A

1 x HDMI™ 2.0

1 x SD Card Reader

1 x Audio Jack

### PRELOADED SOFTWARE

- Windows 11 Pro/Home
- McAfee® LiveSafe™
- Microsoft Office
- Lenovo Utility
- Lenovo Vantage
- Alexa



## LENOVO SERVICES

#### Lenovo Premium Care

Premium Care is the hassle-free solution for all your technical support needs. Upgrade your PC's standard warranty to our front-of-the-queue customer support service and get 24/7 real-person support via phone, chat, or email from experts who provide solutions on your first contact.

#### Lenovo Smart Performance

Smart Performance Services within Lenovo Vantage will keep your system running at optimum performance and proactively fix issues that affect PC performance, internet performance, remove malware, and improve device security.

#### Lenovo Accidental Damage Protection

Avoid the hassles of unexpected damage & repair costs. With coverage for drops, spills, electric surges, and broken LCD screens, accidental damage protection makes it easy to repair to your PCs and ensures your device is up and running fast.

#### Lenovo Smart Privacy Services

Smart Privacy Services within Lenovo Vantage puts you in control of your privacy with an intelligent software that makes your browsing experience more private by blocking third-party web trackers, secures your online accounts, encrypts your WiFi connection, monitors your information for exposure in organizational data breaches, and removes your profiled data from select sites found on the internet.

#### Lenovo Sealed Battery Warranty

Long-lasting battery life is not just a feature but a necessity to help you stay productive and connected all day long. Protect your PC's sealed battery from degradation, enjoy hassle-free battery replacement service, and safeguard your PC from future battery failure with our Sealed Battery Warranty Service.

#### Lenovo Warranty Extensions (Up to 3 Years Duration)

Gain complete peace of mind by extending your base warranty to up to 3 years and minimize unexpected repair costs.

#### Lenovo Premium Care Plus\*

The ultimate PC support experience, with you as our priority 24/7. Enjoy personalized hardware and software support from a global network of elite technicians, along with accidental damage protection, extended battery warranty support, and smart performance solutions that ensure optimized PC performance and security.

\* Launching in March 2022 in US, Canada, and AP English markets.

## OPTIONS & ACCESSORIES



Lenovo 530 Wireless Mouse



Lenovo 15.6" Laptop Urban Backpack B530



Lenovo 110 USB Stereo Headset

## McAfee® LiveSafe™

Register McAfee® to enjoy these benefits in your FREE 30-day trial.

- Award-winning Antivirus
- Multi-device Compatibility
- Password Manager
- Identity Theft Protection
- Safe Web Browsing
- Free Customer Support

\* Example of Lenovo marketing naming convention



WWW.LENOVO.COM

Lenovo reserves the right to alter product offerings and specifications at any time, without notice. Lenovo makes every effort to ensure accuracy of all information but is not liable or responsible for any editorial, photographic or typographic errors. All images are for illustration purposes only. For full Lenovo product, service and warranty specifications visit [www.lenovo.com](http://www.lenovo.com). Lenovo makes no representations or warranties regarding third party products or services. **Trademarks:** The following are trademarks or registered trademarks of Lenovo: Lenovo, the Lenovo logo, IdeaPad, IdeaCentre, yoga and yoga home. Microsoft and Windows are registered trademarks of Microsoft Corporation. Ultrabook, Celeron, Celeron Inside, Core Inside, Intel, Intel Logo, Intel Atom, Intel Atom Inside, Intel Core, Intel Inside, Intel Inside Logo, Intel vPro, Itanium, Itanium Inside, Pentium, Pentium Inside, vPro Inside, Xeon, Xeon Phi and Xeon Inside are trademarks of Intel Corporation in the U.S. and/or other countries. Other company, product and service names may be trademarks or service marks of others. Battery life (and recharge times) will vary based on many factors including system settings and usage. Visit [www.lenovo.com/lenovo/us/en/safecomp/](http://www.lenovo.com/lenovo/us/en/safecomp/) periodically for the latest information on safe and effective computing. ©2022 Lenovo. All rights reserved.



Lenovo