



Philips Lumea  
IPL hair removal system

For men

Lumea

TT3000/01



## Prevent hair regrowth

enjoy smooth skin everyday

The Philips Lumea IPL hair removal system for men uses gentle pulses of light to stimulate the hair root into a resting phase. Hair sheds naturally and regrowth is inhibited. Using it every two weeks enables you to enjoy smooth skin every day.

### Effective hair regrowth control

- Body hair regrowth control

### Intense Pulsed Light (IPL) technology

- Suitable for home use

### Gentle application

- Hairs are eliminated before they appear

### Application areas

- For chest, stomach, legs, underarms, back and pubic area

### Suitable hair and skin types

- NOT suitable for red, grey, light-blond hair and skin type VI

**PHILIPS**

# Highlights

## IPL technology



Philips Lumea works with an innovative light-based technology called "Intense Pulsed Light" (IPL) derived from technology used in professional beauty salons for hair removal. Philips Lumea now brings this innovative new technology, suitable for home use, to be used by you wherever and whenever you want.

## Suitable hair and skin types



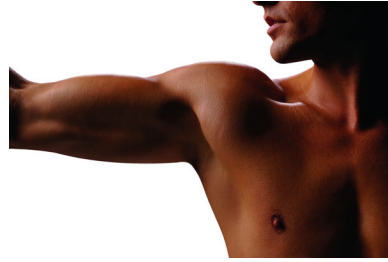
Philips Lumea works effectively on (naturally) dark-blond, brown and black hair. Philips Lumea is NOT effective for (naturally) red, grey and light blond hair. Philips Lumea is NOT suitable for very dark skin (skin type VI)

## Smoother results than a blade



Hairs are eliminated before they appear

## Application body areas



Philips Lumea for Men has been developed in close co-operation with leading dermatologists for a safe, effective and gentle application on arms, underarms, shoulders, stomach, pubic area (excluding the scrotum), legs, chest and back

## Body hair regrowth control



Philips Lumea for Men applies gentle pulses of light to the hair root. Consequently, the hair sheds naturally and hair regrowth is inhibited. Repeating this treatment every two weeks for the underarms, pubic area, chest, stomach, legs and back will keep your skin smooth every day. For the most effective treatment, pre-shave the application areas with the included Bodygroom for as long as you still experience regrowth

## Lamp does not need replacement

Philips Lumea comes equipped with a durable lamp with a lifetime of 80,000 flashes

# Specifications

## Features

- 3cm<sup>2</sup> application window: For an effective treatment of large areas
- 5 light energy settings: Adjustable to your personal skin type
- Integrated UV filter: Protects your skin from UV light
- Ready-to-flash light: Indicates correct application on the skin

## Accessories

- Storage pouch: included
- Cleaning cloth: included
- AC/DC Adapter/Charger: included

## Technical specifications

- Battery type: Lithium Ion
- Frequency: 50–60 Hz
- Power: 7.5 W
- Voltage: 100–240 V
- Light energy level: 2–6.5 J/cm<sup>2</sup> (depending on chosen setting)
- Light spectrum: >570 nm
- High performance lamp: Delivers > 80,000 flashes

## Logistic data

- Country of origin: Hungary

## Items included

- Instructions for use: Full user manual, Quick Start Guide

## Power

- Charging time: 100 min
- Power system: Rechargeable battery
- Running time: Min. 320 flashes
- Voltage: 100–240 V

## Safety and adjustable settings

- Safety ring system: Prevent unintentional flashing

## Service

- Warranty: 2 years global warranty

