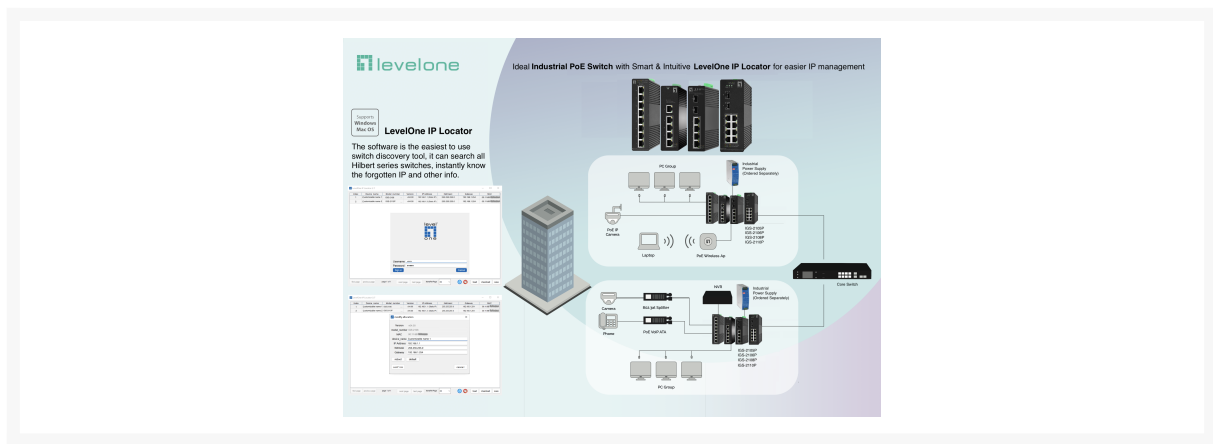


IGS-2105P Hilbert 5-Port Industrial Gigabit PoE Smart Lite Switch, 4 PoE Outputs, 802.3at/af PoE

Product Images





Short Description

- 4 PoE-Plus Gigabit Ethernet ports supports PoE Watchdog
- IEEE 802.3af/at PoE compliant to simplify deployment and installation
- 1000Mbps full-duplex, 10/100Mbps full/half-duplex, auto-negotiation, auto-MDI/MDIX
- Supports 2K MAC address auto-learning and auto-aging
- 9K jumbo frames to increase data transfer rates
- Support STP/RSTP Spanning Tree Protocol
- IP Multicast Filtering through IGMP Snooping V1 / V2
- 802.1Q tag-based VLAN allows network segmentation to enhance performance and security
- IEEE 802.1p QoS with 4 priority queues
- Supports unknown unicast / broadcast / multicast storm control
- Minimize carbon footprint with advanced energy efficient technology (IEEE 802.3az)
- 40°C to 75°C operating temperature range
- Redundant power inputs with Terminal Block
- 4KV surge protection, 6KV contact / 8KV air ESD protection
- Supports DIN-rail installation
- Web-based and smart lite Management
- Supports LevelOne IP Locator for easier IP management

Description

The LevelOne IGS-2105P Hilbert 5-Port Industrial Gigabit PoE Smart Lite switch is a next-generation Ethernet Switch offering powerful better PoE functionality and usability that delivers the cost-effectively business and transports Ethernet services via copper connections. the IGS-2105P offers 5 (10M/100M/1G) RJ45, of which 4 are PoE+ (support 802.3at/af) ports to enable high speed network at mission-critical environment. With the industrial standard DIN-rail mount, plus the clearly visible status LEDs provide simple monitoring of port link activity.. can be matched with the latest LevelOne IP Locator, the software is the easiest to use switch discovery tool, it can search all Hilbert series switches, instantly know the forgotten IP and other info. Compatible with mainstream Windows and Mac operating systems.

The LevelOne IGS-2105P provides high HW performance and environment flexibility for Enterprises. IGS-2105P is ideal to deliver management simplicity, optimum user experience, and lower total cost of ownership.

Additional Information

Color	Black
EAN	4015867236154
Model Number	IGS-2105P
Features	L2 Switching Features 1. IGMP Snooping ● Supports IGMP Snooping ● Supports 128 groups 2. Link Aggregation ● Supports static link aggregation ● Supports 8 groups of aggregation, up to 4 ports per group 3. Port Mirroring ● One-to-one ● Many-to-Many 4. Support port isolation, port grouping VLAN ● Supports up to 32 VLANs (out of 4K VLAN IDs) ● Supports Port VLAN and 802.1Q VLAN ● Supports Port-based/802.1p/DSCP priority QoS ● Support 4 priority queues ● Port Speed Limit ● Storm Control
Management	● Web-based Graphic User Interface (GUI) ● Supports LevelOne IP Locator for easier IP management.
Data rate	Gigabit Ethernet
PoE Power Budget	Total 60.00
PoE Supported	Yes
Concurrent ports	Total 5.00
Fanless	Yes
Manageable	Yes
Series	HILBERT series
Grade	Industrial
Approval and Compliance	● CE ● UKCA ● FCC Part 15, Subpart B Class B ● RoHS
Operating humidity	10% RH ~ 90% RH
Operating temperature	-40°C ~ 70°C
Storage humidity	5% RH ~ 95% RH
Storage temperature	-40°C ~ 85°C

Package Contents	<ul style="list-style-type: none"> ● IGS-2105P ● Power Terminal Block ● Din-rail Mount Kit ● Quick Installation Guide ● Declaration of Conformity
Switching capacity	10 Gbps
Dimensions (W x D x H)	136 x 108 x 38.5 mm
Product weight (kg)	0.38 kg
IP grade	IP30
Acoustic noise (dB)	0 dB (A)
Backplane (Gbps)	10
Dip switch	LOOP, VLAN ON/OFF
Flash memory size	2 MB
Packet forwarding rate	7.44 Mpps
Heat dissipation	23.88 (Btu/H)
Indicators	Power, Link/Act
Jumbo frame (KB)	9 KB
MAC address table	2 K
Mount	DIN rail mount
MTBF	43,800 hrs
Packet buffer	1.5 Mbits
Pin assignment and polarity	1/2 (+), 3/6 (-)
Port Configuration	4x 10/100/1000 Mbps PoE+ copper downlink ports, 1x 10/100/1000 Mbps RJ-45 copper uplink ports
Power consumption	68 W
Power input	Redundant Dual DC 12V/24V/48V
Power supply	VDC 44~57V
Power supply included	No

Standards

● IEEE 802.3 10-BASE-T (Ethernet) ● IEEE 802.3u 100-BASE-TX (Fast Ethernet) ● IEEE 802.3ab 1000BASE-T (Gigabit Ethernet) ● IEEE 802.3x Flow Control (full-duplex flow control) ● IEEE 802.3af Power over Ethernet ● IEEE 802.3at Power over Ethernet Plus ● IEEE 802.3az: Energy Efficient Ethernet ● IEEE 802.1D Spanning Tree Protocol (STP) ● IEEE 802.1w Rapid Spanning Tree Protocol (RSTP)

