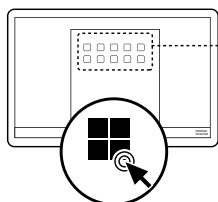


ThinkStation P8 Setup Guide

User Guide Access



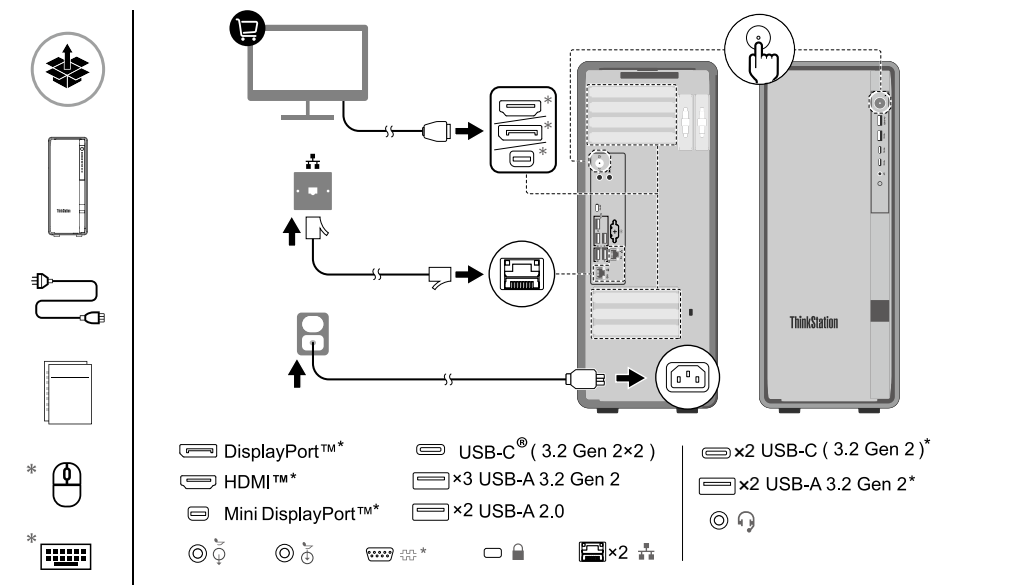
pcsupport.lenovo.com



仅限中国大陆地区

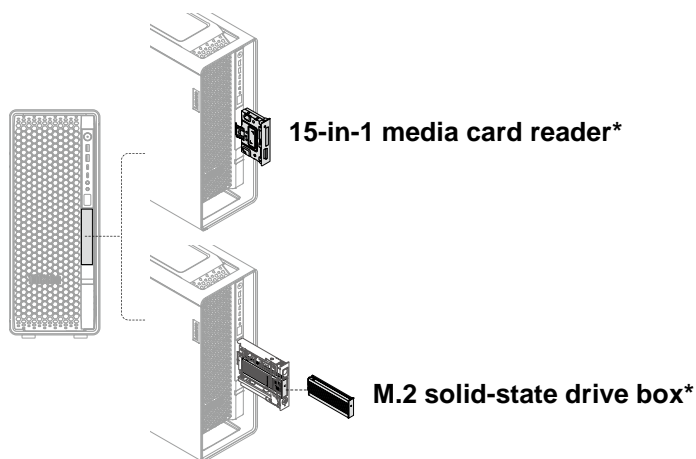
Turn to User Guide for USB transfer rate, how to use key features, and more product information.

Overview



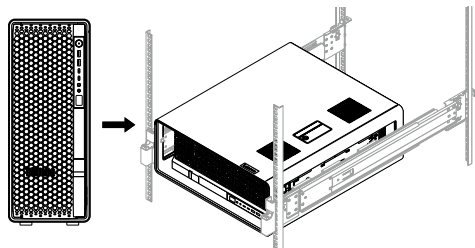
Key features

Front-access storage bay*

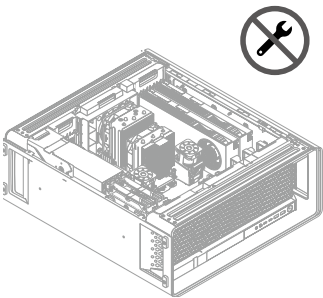


*For selected models

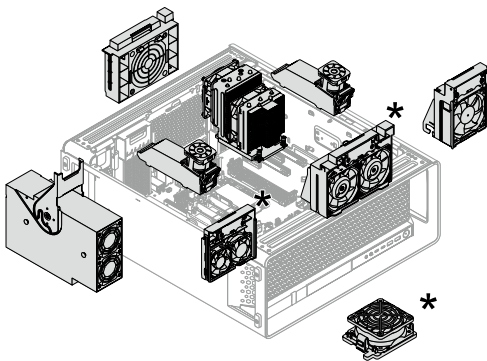
Rack mounted



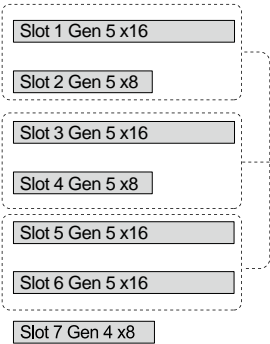
Toolless design



Cooling system

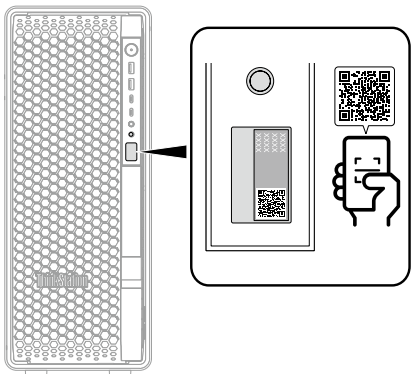


PCIe slots



Double width

Diagnostics panel



*For selected models

European Union (EU) / United Kingdom (UK) — radio frequency and power

This radio equipment operates with the following frequency bands and maximum radio-frequency power:

Technology	Frequency band	Maximum transmit power
WLAN 802.11b/g/n/ax	2400 - 2483.5 MHz	< 20 dBm
WLAN 802.11a/n/ac/ax	5150 - 5725 MHz	< 23 dBm
WLAN 802.11a/n/ac/ax	5725 - 5875 MHz	< 13.98 dBm
WLAN 802.11ax	5945 - 6425 MHz	< 23 dBm
Bluetooth BR/EDR/LE	2400 - 2483.5 MHz	< 20 dBm

Note: Not all wireless bands may be enabled depending on your product configuration. Usage of this device is limited to indoor locations in the bands 5150 - 5350 MHz and 5945 - 6425 MHz.

First Edition (January 2024)

© Copyright Lenovo 2024.

LENOVO, LENOVO logo, ThinkStation, and ThinkStation logo are trademarks of Lenovo. DisplayPort is a trademark of the Video Electronics Standards Association. The terms HDMI and HDMI High-Definition Multimedia Interface are trademarks or registered trademarks of HDMI Licensing LLC in the United States and other countries. USB-C is a registered trademark of USB Implementers Forum. All other trademarks are the property of their respective owners.

LIMITED AND RESTRICTED RIGHTS NOTICE: If data or software is delivered pursuant to a General Services Administration "GSA" contract, use, reproduction, or disclosure is subject to restrictions set forth in Contract No. GS-35F-05925.

