



65143/65144

©2023 Bestway Inflatables & Material Corp.

All rights reserved/Tous droits réservés/Todos los derechos reservados/Alle Rechte vorbehalten/Tutti i diritti riservati

Trademarks used in some countries under license from/

Marques utilisées dans certains pays sous la licence de/

Marcas comerciales utilizadas en algunos países bajo la licencia de/

Die Warenzeichen werden in einigen Ländern verwendet unter Lizenz der/

Marchi utilizzati in alcuni paesi concessi in licenza a

Bestway Inflatables & Material Corp., Shanghai, China

Manufactured, distributed and represented in the European Union by/

Fabriqués, distribués et représentés dans l'Union Européenne par/Fabricado, distribuido y representado en la Unión Europea por/

Hergestellt, vertrieben und in der Europäischen Union vertreten von/Prodotto, distribuito e rappresentato nell'Unione Europea da

Bestway Europe S.p.a., Via Resistenza, 5, 20098 San Giuliano Milanese (Milano), Italy

Distributed in Latin America by/Distribué en Amérique latine par/Distribuido en Latinoamérica por/Distribuído na América Latina por

Bestway Central & South America Ltda, Salar Ascotan 1282, Parque Enea, Pudahuel, Santiago, Chile

Distributed in Australia & New Zealand by **Bestway Australia Pty Ltd, Unit 2/98-104 Carnarvon St Silverwater, NSW 2128, Australia**

Tel: Australia: +61 2 9037 1388; New Zealand: 0800 142 101

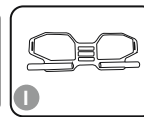
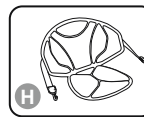
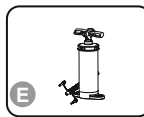
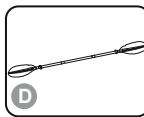
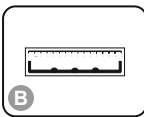
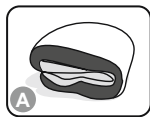
Distributed in United Kingdom by **Bestway Corp UK Ltd, 8 Wentworth Road, Heathfield Industrial Estate, Newton Abbot, Devon, TQ12 6TL**

Exported by/Exporté par/Exportado por/Exportiert von/Esportato da

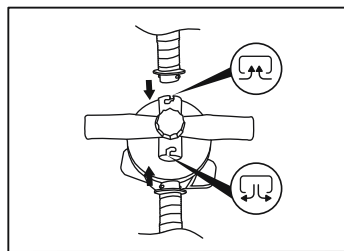
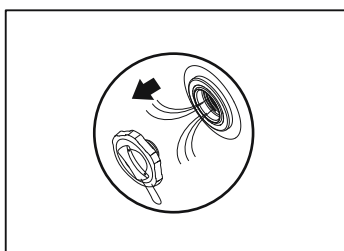
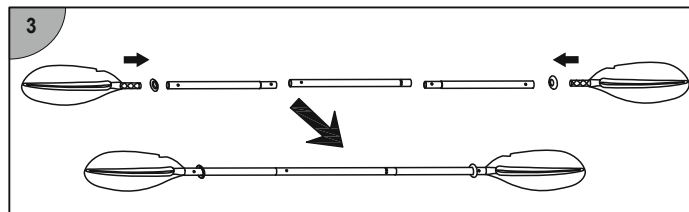
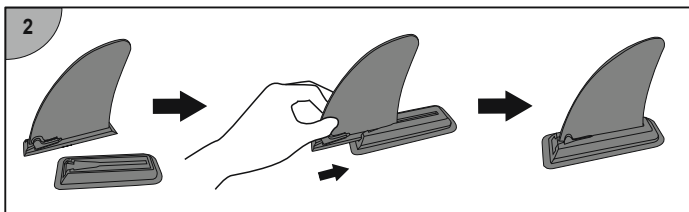
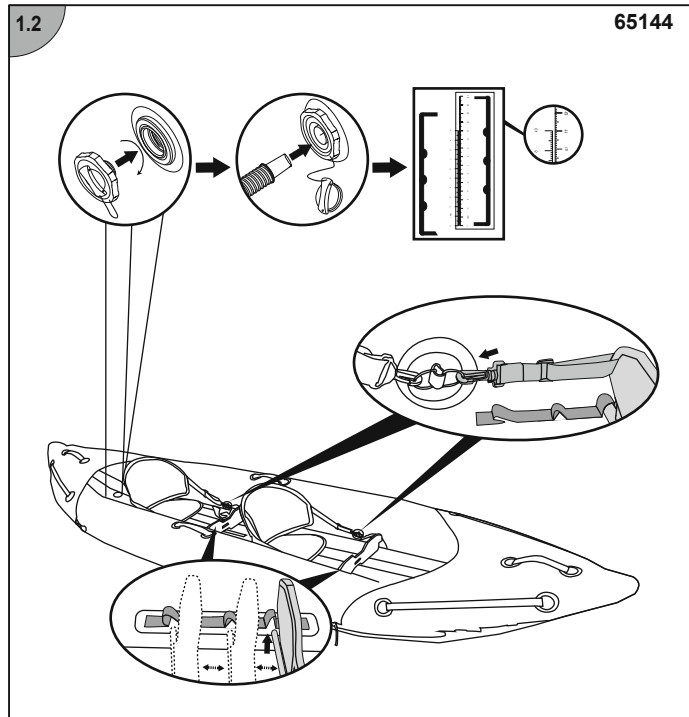
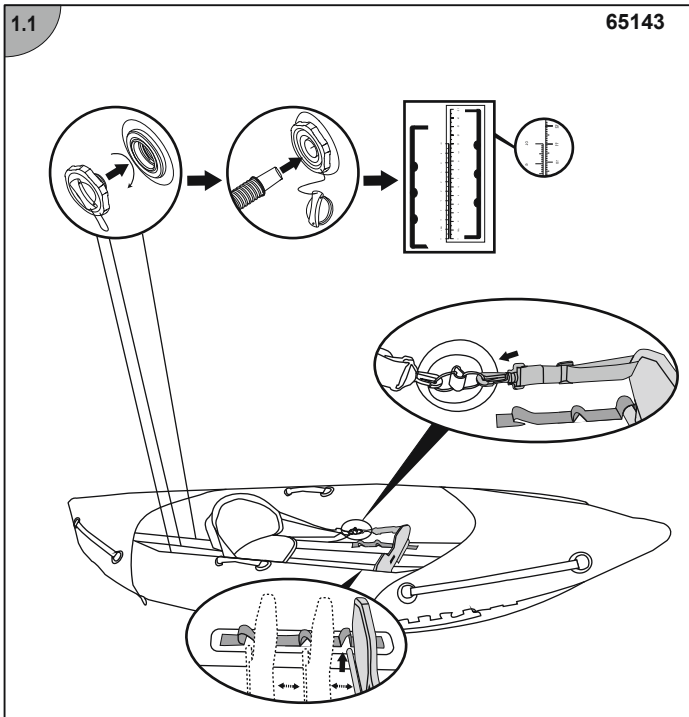
Bestway (Hong Kong) International Ltd./Bestway Enterprise Company Limited

Suite 713, 7/Floor, East Wing, Tsim Sha Tsui Centre, 66 Mody Road, Kowloon, Hong Kong

www.bestwaycorp.com



	A	B	C	D	E	F	G	H	I
65143	x1	x1	x1	x1	x1	x2	x1	x1	x1
65144	x1	x1	x1	x2	x1	x2	x1	x2	x2



OWNER'S MANUAL

IMPORTANT SAFETY INSTRUCTIONS

WARNING

Follow all the Safety and Operating Instructions. If you don't follow these instructions, it may cause overturn, explode the boat and causes drowning.

- Before every use, carefully inspect all boat components including air-chambers, grab ropes, oars, and air valves, to ensure everything is in good condition and tightly secured. Please stop to repair if you find any damage.
- Passenger numbers and load weights shall by no means exceed specified capacities. Refer to the Technical Specifications section of this manual to determine passenger numbers and load weights for your boat. Being overweight will cause overturn and drowning.
- Inflate according to the numbered air chamber and rated pressure of the boat, or it will cause over-inflation and potential boat explosion. Exceeding the data given on the capacity plate may cause the craft to be damaged, overturn and lead to drowning.
- Keep the boat balanced. Uneven distribution of persons or loads in the boat may cause the overturning of the boat and drowning.
- **BE AWARE OF OFFSHORE WINDS AND CURRENTS.**
- Don't leave the boat exposed to the sun for long periods of time, as high temperatures can increase air expansion, which can cause irreparable damage.
- Never transport the boat in inflated condition on the car. Be aware of the potentially harmful effects of liquids such as battery acid, oil, petrol. The liquids may damage your boat.

TECHNICAL SAFETY INSTRUCTIONS

- Follow these instructions to avoid drowning, paralysis or other serious injuries.
- Do not exceed the maximum recommended number of people. Regardless of the number of people on board, the total weight of people and equipment must never exceed the maximum recommended load. Always use the seats/seating spaces provided.
- When loading the craft, never exceed the maximum recommended load. Carefully distribute the weight appropriately to ensure the craft remains level. Avoid placing heavy items in the front.
- The maximum recommended load includes the weight of all people on board, all provisions and personal effects, any equipment not attached to the craft, cargo (if any) and all consumable liquids (water, fuel, etc.).
- When using the boat, life-saving devices such as life jackets and buoys should be inspected beforehand and used at all times.
- Buckets, water scoops and air pumps should always be available in case of air leakage or if the boat takes on water.
- When the boat is in motion, all passengers must remain seated at all times to avoid falling overboard.
- Use the boat in protected shore-zones, up to 300 m (984 ft.). Be aware of natural factors such as wind, tidewaters and tidal waves.
- Be careful when landing on the shore. Sharp and rough objects such as rocks, cement, shells, glass, etc. may puncture the boat.
- If one chamber is punctured when the boat is in the water, it may be necessary to fully inflate the other air chamber to prevent the boat from sinking.
- To avoid damage, do not drag the boat on rough surfaces.
- It is the responsibility of the owner/operator to have at least a bucket/bailer on board, secured against accidental loss.
- Be responsible, and do not neglect the safety rules as this could jeopardize your life and the lives of others.
- Know how to operate a boat. Check in your local area for information and/or training as needed. Inform yourself about local regulations and dangers related to boating and/or other water activities.
- Drawings are for illustration purposes only. May not reflect actual product. Not to scale.

SAVE THESE INSTRUCTIONS

TECHNICAL SPECIFICATIONS

Item	Recommended working pressure	Maximum load capacity	Maximum number of persons
65143	0.07 bar (1 psi) 0.14 bar (2 psi)	100kg (220lbs)	1 adult
65144	0.07 bar (1 psi) 0.14 bar (2 psi)	180kg (397lbs)	2 adults

INFLATE & ASSEMBLE

NEVER USE HIGH-PRESSURE AIR TO INFLATE INFLATABLES. IT CAN DAMAGE YOUR PRODUCT.

- Inflate only as far that after inflating one can see some folding at the welding seams. After inflation compares the height of the printed scale on the product with the following table to make sure the height of each chamber is reached. **DO NOT OVERINFLATE.**
- Take care that the boat has gotten to the correct pressure. Pay attention to both pressure scales on the type-plate and check the pressure from time to time, because in the sun the pressure can grow and it must be balanced then to the correct one.
- Extended exposure to the sun can shorten the lifespan of your boat. We suggest not leaving boats in direct sunlight for more than 1 hour after use.

Item	Product Inflated Size	Printed Scale	
		Deflated Size	Inflated Size
65143	3.12m x 96cm x 35cm (10'3" x 38" x 14")	5cm / 10cm	5.1cm / 10.3cm
65144	3.86m x 96cm x 35cm (12'8" x 38" x 14")	5cm / 10cm	5.1cm / 10.3cm

SAFETY ROPE INSTALLATION

- Safety ropes shall be fitted to both sides of the bow and stern areas only and shall not impede the normal operation of the craft.
- Do check carefully if the saving rope is tightened well.

SEAT AND FOOTREST ASSEMBLY

- After the craft is inflated, connect the belts of the seats and footrests to the side buckles on the craft.
- The location of the seats and footrests can be adjusted along with the craft floor.

STORAGE

- Remove all accessories.
- Carefully clean the boat using mild soap with clean water. Do not use acetone, acid, and/or alkaline solutions.
- Use a cloth to gently dry all surfaces. The product can be dry under direct sunlight for no more than 1 hour, extended exposure to the sun can shorten the lifespan of the boat.

REPAIR

- If there is a small puncture, repair it according to the instructions on the repair patch.
- If the hole is too big to be repaired with the provided patch, purchase a Bestway repair kit or send the boat to a speciality shop for repair.

PLEASE KEEP THIS MANUAL IN A SECURE PLACE, AND HAND IT OVER TO THE NEW OWNER WHEN YOU SELL THE CRAFT.