



©2023 Bestway Inflatables & Material Corp.

All rights reserved/Tous droits réservés/Todos los derechos reservados/Alle Rechte vorbehalten/Tutti i diritti riservati

Trademarks used in some countries under license from/

Marques utilisées dans certains pays sous la licence de/

Marcas comerciales utilizadas en algunos países bajo la licencia de/

Die Warenzeichen werden in einigen Ländern verwendet unter Lizenz der/

Marchi utilizzati in alcuni paesi concessi in licenza a

Bestway Inflatables & Material Corp., Shanghai, China

Manufactured, distributed and represented in the European Union by/

Fabriqués, distribués et représentés dans l'Union Européenne par/Fabricado, distribuido y representado en la Unión Europea por/

Hergestellt, vertrieben und in der Europäischen Union vertreten von/Prodotto, distribuito e rappresentato nell'Unione Europea da

Bestway Europe S.p.a., Via Resistenza, 5, 20098 San Giuliano Milanese (Milano), Italy

Distributed in Latin America by/Distribué en Amérique latine par/Distribuido en Latinoamérica por/Distribuido na América Latina por

Bestway Central & South America Ltda, Salar Ascotan 1282, Parque Enea, Pudahuel, Santiago, Chile

Distributed in Australia & New Zealand by **Bestway Australia Pty Ltd, Unit 2/98-104 Carnarvon St Silverwater, NSW 2128, Australia**

Tel: Australia: +61 2 9037 1388; New Zealand: 0800 142 101

Distributed in United Kingdom by **Bestway Corp UK Ltd, 8 Wentworth Road, Heathfield Industrial Estate, Newton Abbot, Devon, TQ12 6TL**

Exported by/Exporté par/Exportado por/Exportiert von/Esportato da

Bestway (Hong Kong) International Ltd./Bestway Enterprise Company Limited

Suite 713, 7/Floor, East Wing, Tsim Sha Tsui Centre, 66 Mody Road, Kowloon, Hong Kong

www.bestwaycorp.com



001X1



002X2



003X1



004X1

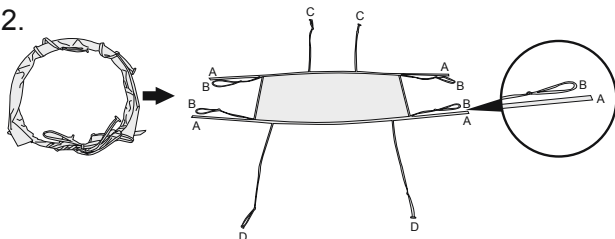


1.37 m x 1.37 m / 54" x 54"
005X1

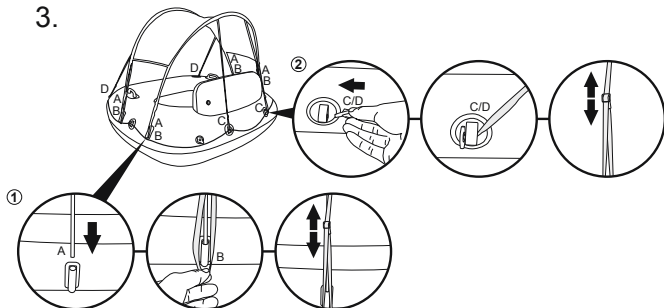
1.



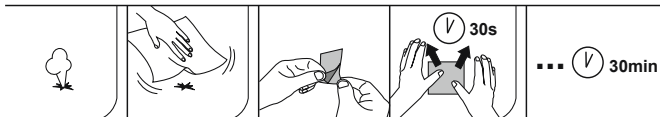
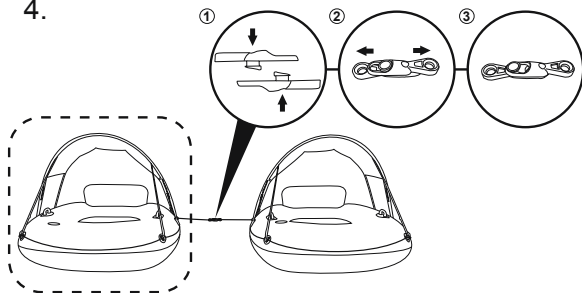
2.

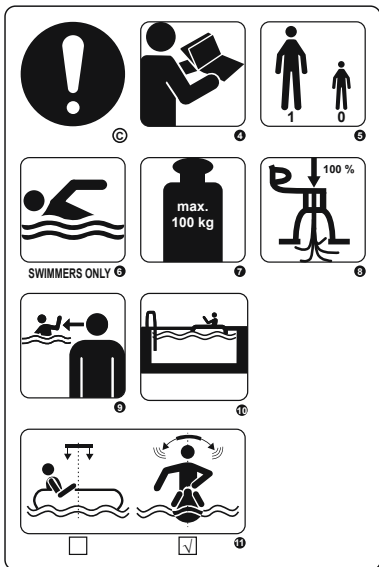


3.



4.





(A) WARNING

(B) PROHIBITION

(C) MANDATORY

1 NO PROTECTION AGAINST DROWNING

2 DESIGN WORKING PRESSURE: 0.03 BAR

3 NOT FOR CHILDREN 14 YEARS OF AGE AND BELOW, APPLY ONLY TO CHILDREN ABOVE 14 YEARS OF AGE

4 READ INSTRUCTIONS FIRST

5 NUMBER OF USERS, 1 ADULT

6 SWIMMERS ONLY

7 MAXIMUM LOAD CAPACITY 100 KG

8 FULLY INFLATE ALL AIR CHAMBERS

9 ALWAYS SUPERVISE CHILDREN IN WATER

10 POOL USE ONLY

11 ALWAYS SUPDEVICE REQUIRES BALANCING DEVICE CHILDREN IN WATER



WARNING

Non-compliance with these operating instructions may expose you to serious danger.

• **ATTENTION! NO PROTECTION AGAINST DROWNING!**

• **SWIMMERS ONLY!**

- Evenly distribute loads when use the product. Tipping and drowning may occur with uneven distribution of loads.

SAVE THESE INSTRUCTIONS

TECHNICAL SAFETY INSTRUCTIONS

Read the manual and follow the instructions relating to safety tips, correct and complete product assembly, setting into service, use and maintenance.

For your own safety, always heed the advice and warnings in these instructions.

Only use the product in the places and conditions for which it is intended.

- Full inflate all air chambers.
- Passenger numbers and load weight shall by no means exceed passenger number and maximum weight capacity in specifications.
- This product should not be used as life saving device.
- Life saving device (life jacket and life buoy) must be prepared together and inspected.
- Keep away from flames and fires.
- Before every use, carefully inspect all product components, to ensure everything is in good condition and tightly secured. Please stop to repair if you find any damage.
- Be careful when landing on the ground. Sharp and rough objects such as rocks, cement, shells, glass, etc. may punctured the product.
- Don't leave the product exposed to sun for long periods of time, as high temperatures shall give rise to air expansion, which can cause irreparable damage.
- Never leave in or near the water when not in use.

ASSEMBLY

WARNING: Adult assembly required.

Take the product and accessories out with care. Spread the product out.

WARNING: Poles contain fiber glass. We strongly recommend wearing gloves during assembly to avoid irritating hands.

Due to the high elasticity of the sunshade, open it carefully to avoid injury.

INFLATION

1. Open safety valve and inflate with the air pump (not included) to design working pressure on the product.
2. Fill the chambers until most of the wrinkles are gone and it feels firm to touch but NOT hard. If you use a pressure gauge (not included), the pressure should not exceed the specified pressure on the product or in the instructions. Do not over-inflate the product. Only use a low-pressure air pump. Do not use an air compressor.

NOTE: Under and over-inflation of the product will result in safety hazards. It is better to check the pressure of the product each time before using.

3. Be sure to close the valves after inflation, press in the safety valves after inflation.

NOTE: Never stand on or rest objects on the product during inflation.

DEFLATION AND DISMANTLING

1. Dismantle the sunshade from the product.
2. Open and pinch the bottom of the valves to deflate.

MAINTENANCE AND STORAGE

1. After use, use a damp cloth to gently clean all surfaces.

NOTE: Never use solvents or other chemicals that may damage the product.

2. Store in a dry place, with a temperature higher than 15°C/59°F, out of reach of children.