



©2023 Bestway Inflatables & Material Corp.

All rights reserved/Tous droits réservés/Todos los derechos reservados/Alle Rechte vorbehalten/Tutti i diritti riservati

Trademarks used in some countries under license from/

Marques utilisées dans certains pays sous la licence de/

Marcas comerciales utilizadas en algunos países bajo la licencia de/

Die Warenzeichen werden in einigen Ländern verwendet unter Lizenz der/

Marchi utilizzati in alcuni paesi concessi in licenza a

**Bestway Inflatables & Material Corp., Shanghai, China**

Manufactured, distributed and represented in the European Union by/

Fabriqués, distribués et représentés dans l'Union Européenne par/Fabricado, distribuido y representado en la Unión Europea por/

Hergestellt, vertrieben und in der Europäischen Union vertreten von/Prodotto, distribuito e rappresentato nell'Unione Europea da

**Bestway Europe S.p.a., Via Resistenza, 5, 20098 San Giuliano Milanese (Milano), Italy**

Distributed in Latin America by/Distribué en Amérique latine par/Distribuido en Latinoamérica por/Distribuido na América Latina por

**Bestway Central & South America Ltda, Salar Ascotan 1282, Parque Enea, Pudahuel, Santiago, Chile**

Distributed in Australia & New Zealand by **Bestway Australia Pty Ltd, Unit 2/98-104 Carnarvon St Silverwater, NSW 2128, Australia**

Tel: Australia: +61 2 9037 1388; New Zealand: +0800 142 101

Distributed in United Kingdom by **Bestway Corp UK Ltd, 8 Wentworth Road, Heathfield Industrial Estate, Newton Abbot, Devon, TQ12 6TL**

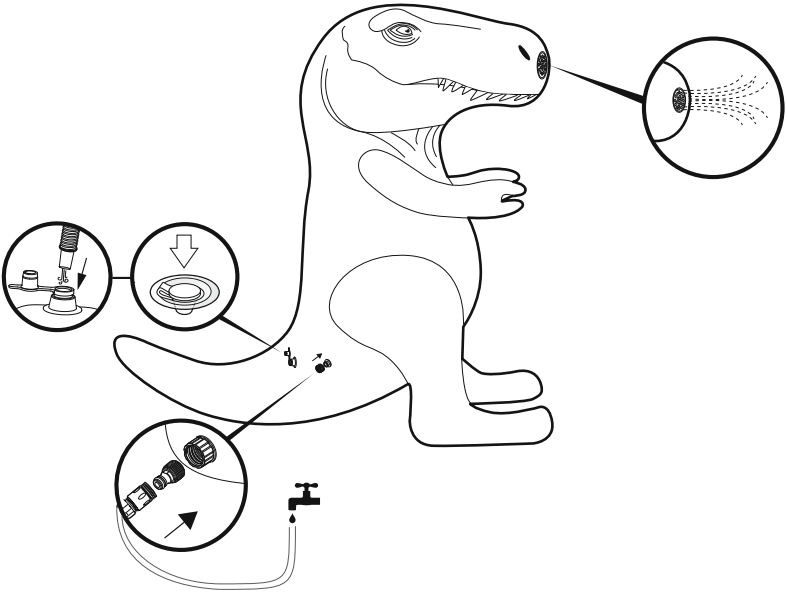
Exported by/Exporté par/Exportado por/Exportiert von/Esportato da

**Bestway (Hong Kong) International Ltd./Bestway Enterprise Company Limited**

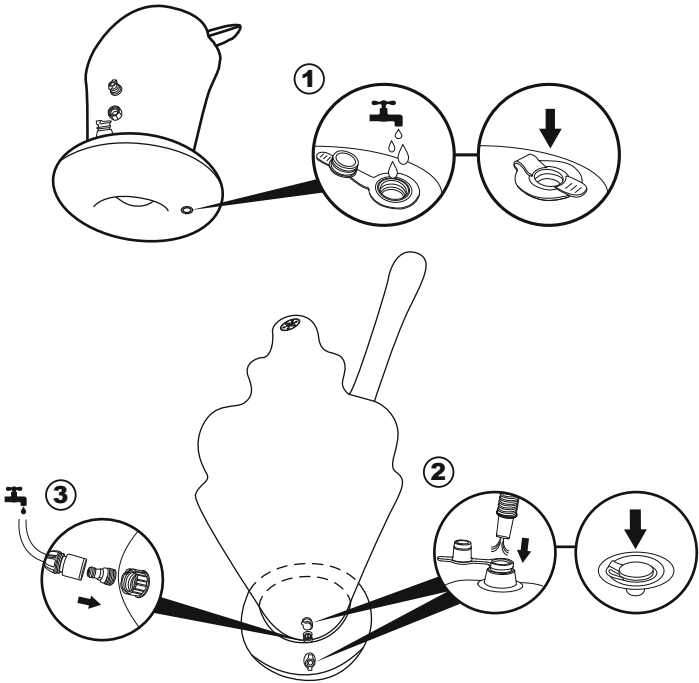
Suite 713, 7/Floor, East Wing, Tsim Sha Tsui Centre, 66 Mody Road, Kowloon, Hong Kong

[www.bestwaycorp.com](http://www.bestwaycorp.com)

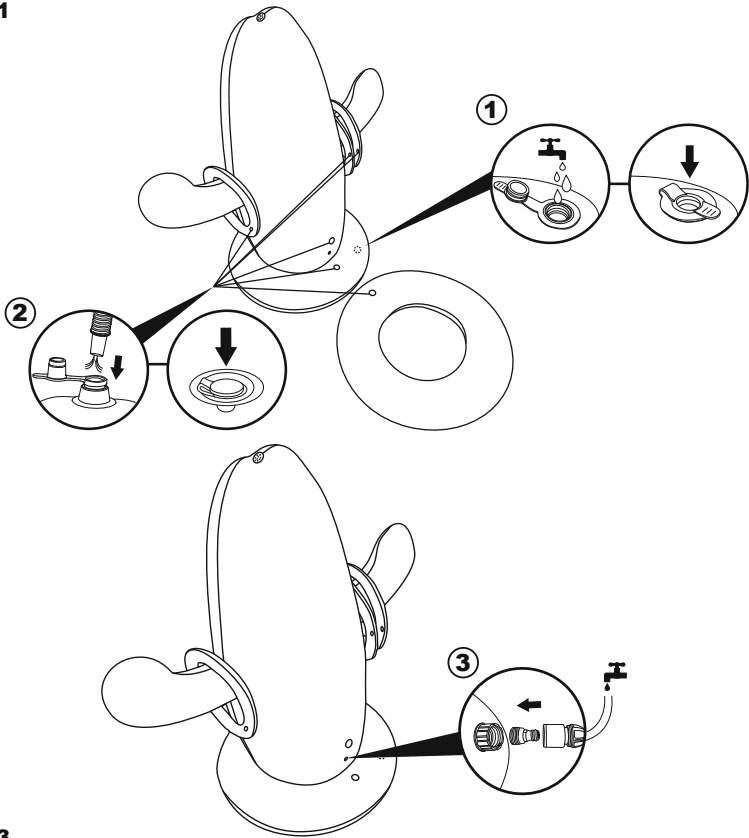
52294



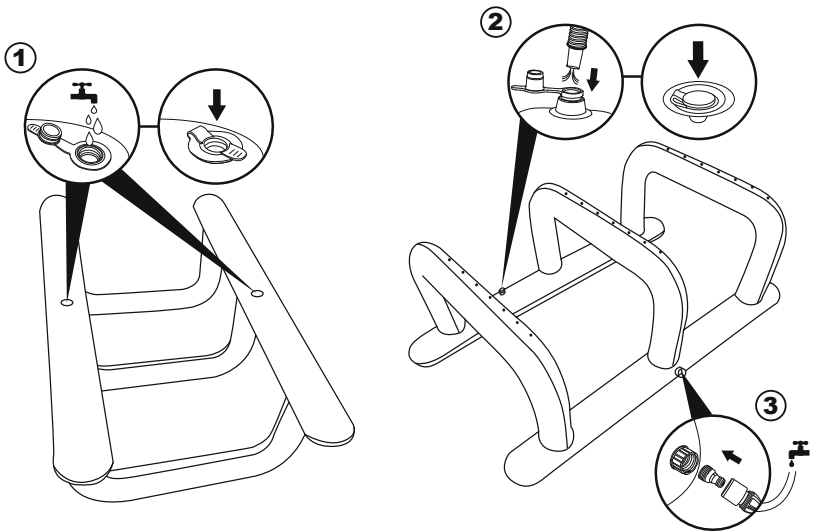
52379



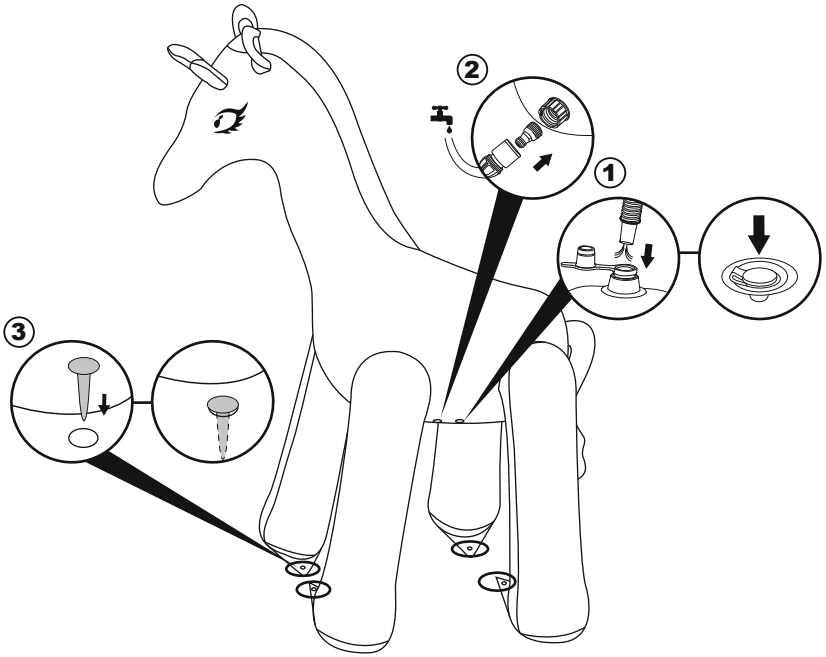
52381



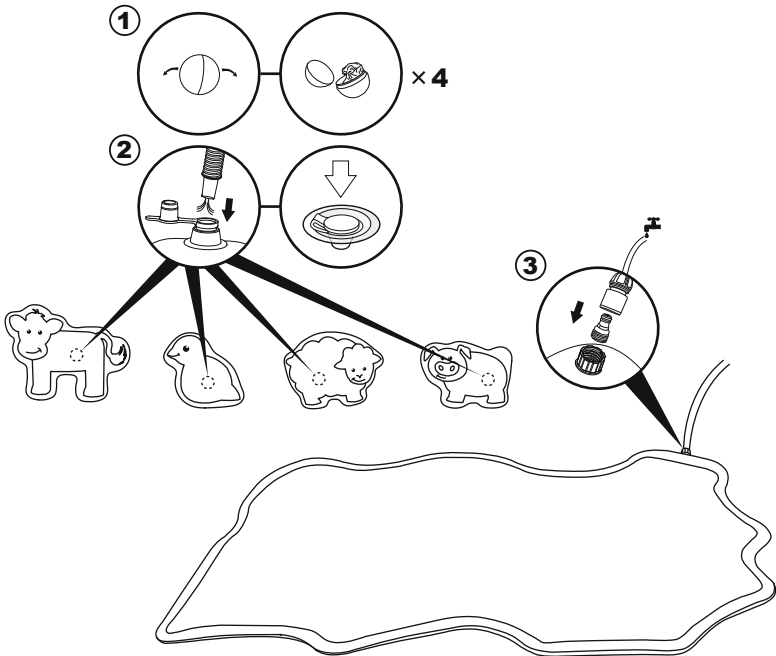
52383



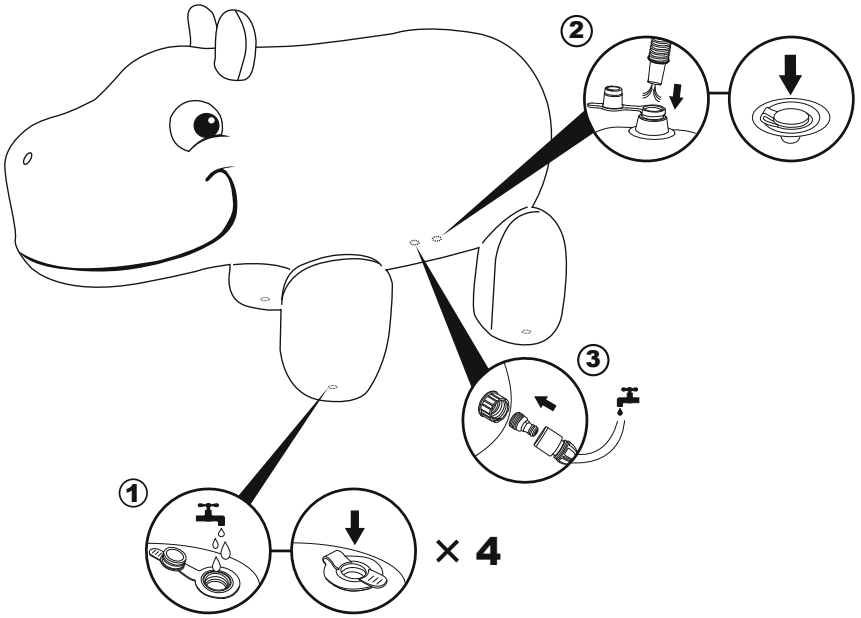
52384



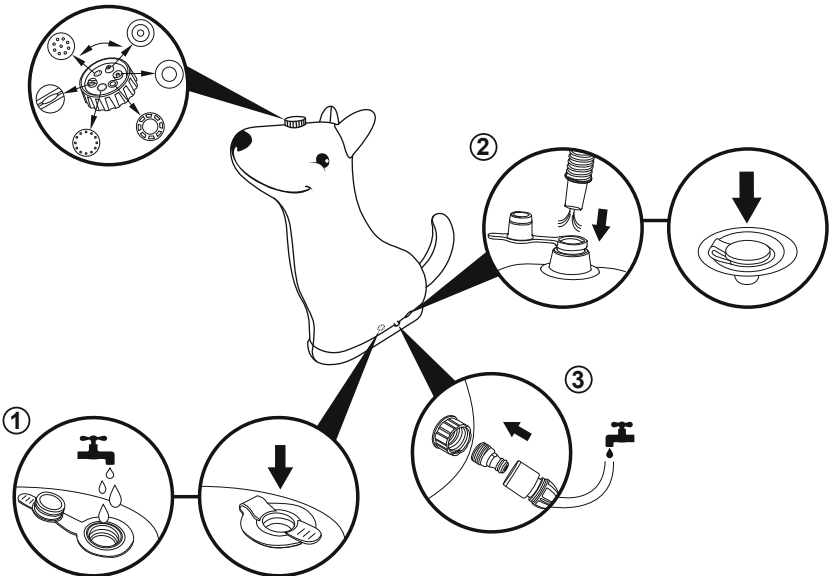
52564



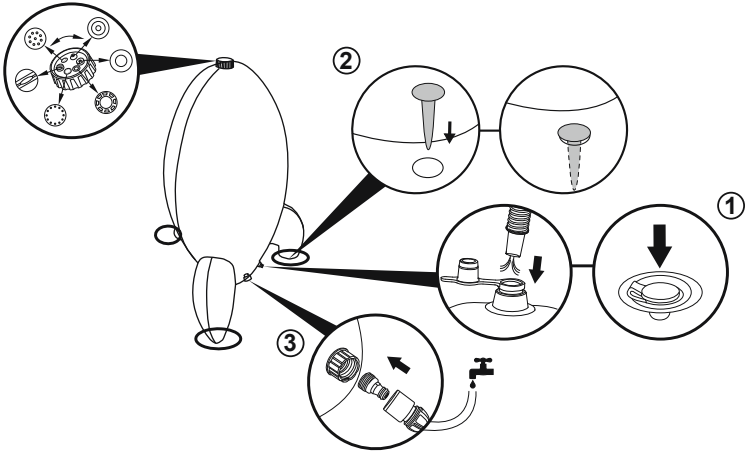
52569



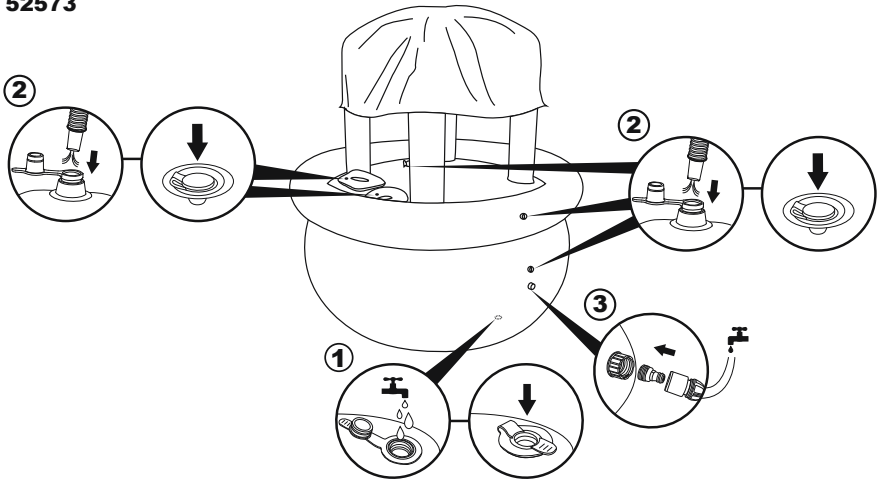
52570



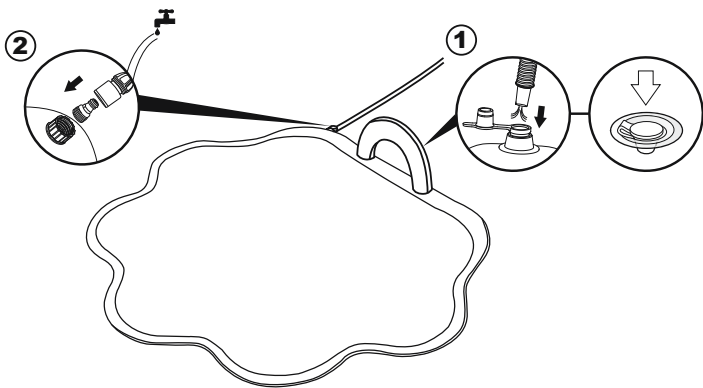
52572



52573

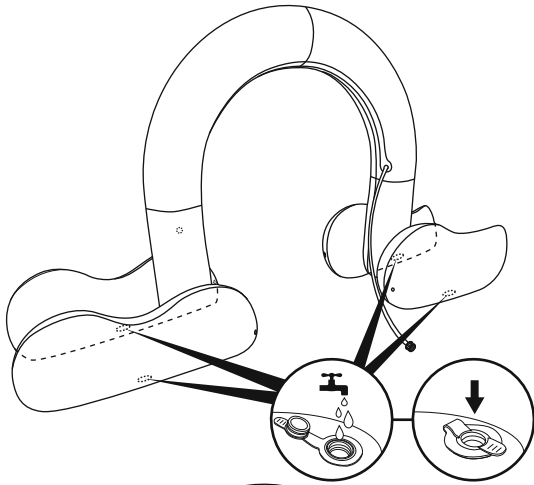


9101E

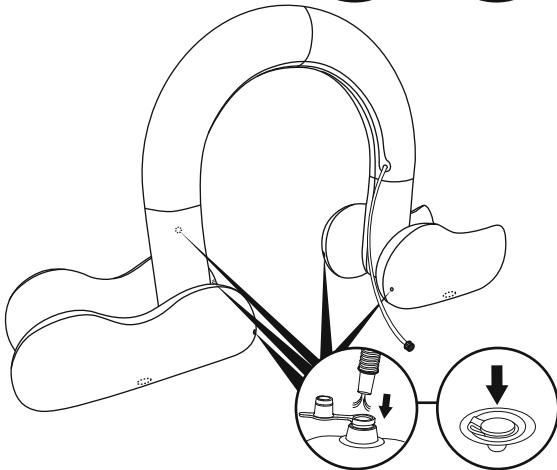


52382

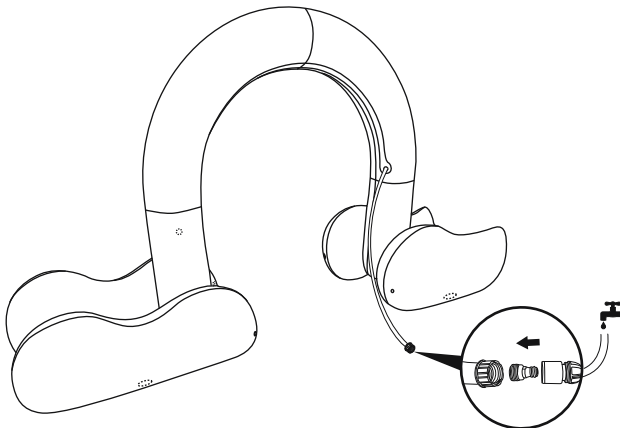
①



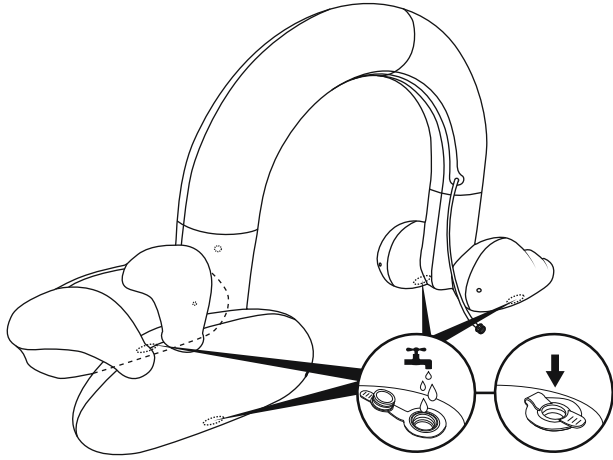
②



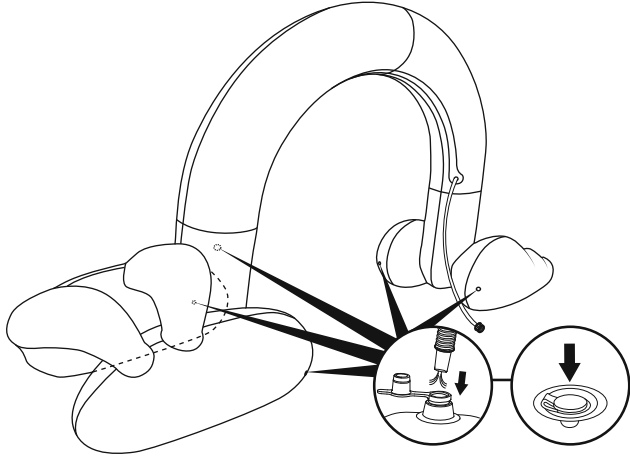
③



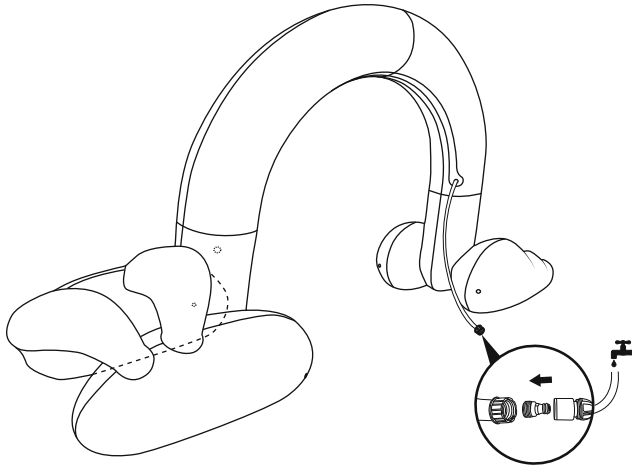
①



②

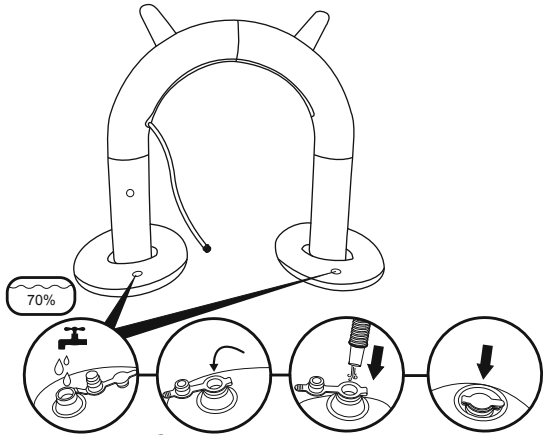


③

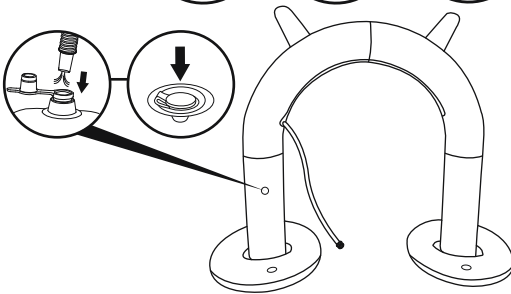


52640

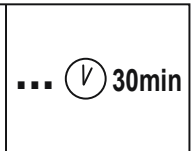
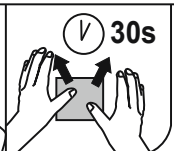
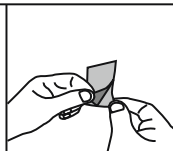
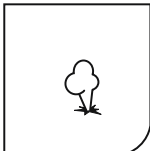
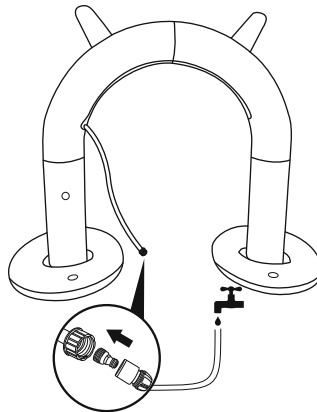
①



②



③



# OWNER'S MANUAL

PLEASE READ INSTRUCTIONS CAREFULLY BEFORE USING THIS PRODUCT.

## WARNING

**KEEP ASSEMBLY AND INSTALLATION INSTRUCTION FOR FUTURE REFERENCE. THE TOY CONTAINS SMALL PARTS, IT SHOULD BE ASSEMBLED BY AN ADULT.**

- Only for domestic use.
- Only for outdoor use.
- The product shall not be installed over concrete, asphalt or any other hard surface.
- Place the product on a level surface at least 2m from any structure or obstruction such as a fence, garage, house, overhanging branches, laundry lines or electrical wires.
- Recommend back towards the sun when playing.
- Before using the product, carefully check if there are any leaks or broken parts.
- Do not place on stones, sticks or any sharp objects that may puncture the product.
- Do not kick, throw or sit on the product.
- Keep away from flames and fires.
- Use only under competent supervision.
- **NOTE:** Air pump not included.

## CLEANING AND MAINTENANCE

1. After use, use a damp cloth to gently clean all surfaces.

**NOTE:** Never use solvents or other chemicals that may damage the product.

2. Store in a dry place, with a temperature higher than 15°C/59°F, out of reach of children.