



©2023 Bestway Inflatables & Material Corp.

All rights reserved/Tous droits réservés/Todos los derechos reservados/Alle Rechte vorbehalten/Tutti i diritti riservati

Trademarks used in some countries under license from/

Marques utilisées dans certains pays sous la licence de/

Marcas comerciales utilizadas en algunos países bajo la licencia de/

Die Warenzeichen werden in einigen Ländern verwendet unter Lizenz der/

Marchi utilizzati in alcuni paesi concessi in licenza a

**Bestway Inflatables & Material Corp., Shanghai, China**

Manufactured, distributed and represented in the European Union by/

Fabriqués, distribués et représentés dans l'Union Européenne par/Fabricado, distribuido y representado en la Unión Europea por/

Hergestellt, vertrieben und in der Europäischen Union vertreten von/Prodotto, distribuito e rappresentato nell'Unione Europea da

**Bestway Europe S.p.a., Via Resistenza, 5, 20098 San Giuliano Milanese (Milano), Italy**

Distributed in Latin America by/Distribué en Amérique latine par/Distribuido en Latinoamérica por/Distribuido na América Latina por

**Bestway Central & South America Ltda, Salar Ascotan 1282, Parque Enea, Pudahuel, Santiago, Chile**

Distributed in Australia & New Zealand by **Bestway Australia Pty Ltd, Unit 2/98-104 Carnarvon St Silverwater, NSW 2128, Australia**

Tel: Australia: +61 2 9037 1388; New Zealand: +0800 142 101

Distributed in United Kingdom by **Bestway Corp UK Ltd, 8 Wentworth Road, Heathfield Industrial Estate, Newton Abbot, Devon, TQ12 6TL**

Exported by/Exporté par/Exportado por/Exportiert von/Esportato da

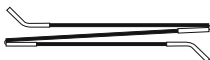
**Bestway (Hong Kong) International Ltd/Bestway Enterprise Company Limited**

Suite 713, 7/Floor, East Wing, Tsim Sha Tsui Centre, 66 Mody Road, Kowloon, Hong Kong

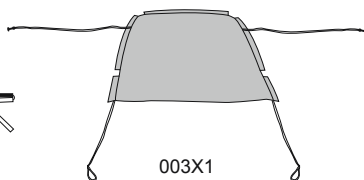
**[www.bestwaycorp.com](http://www.bestwaycorp.com)**



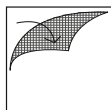
001X2



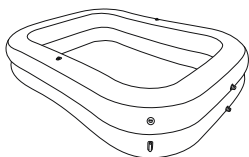
002X1



003X1

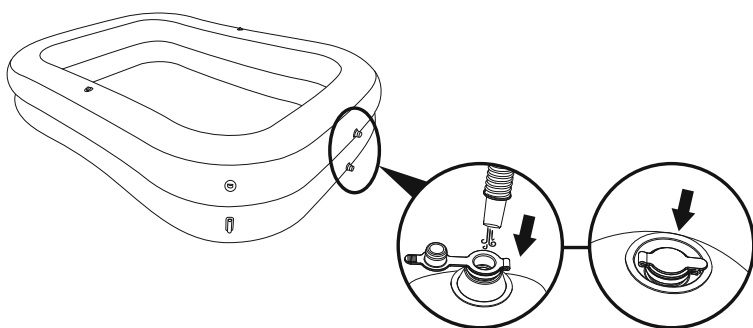


004X1

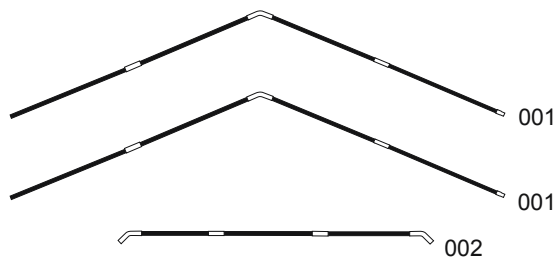


005X1

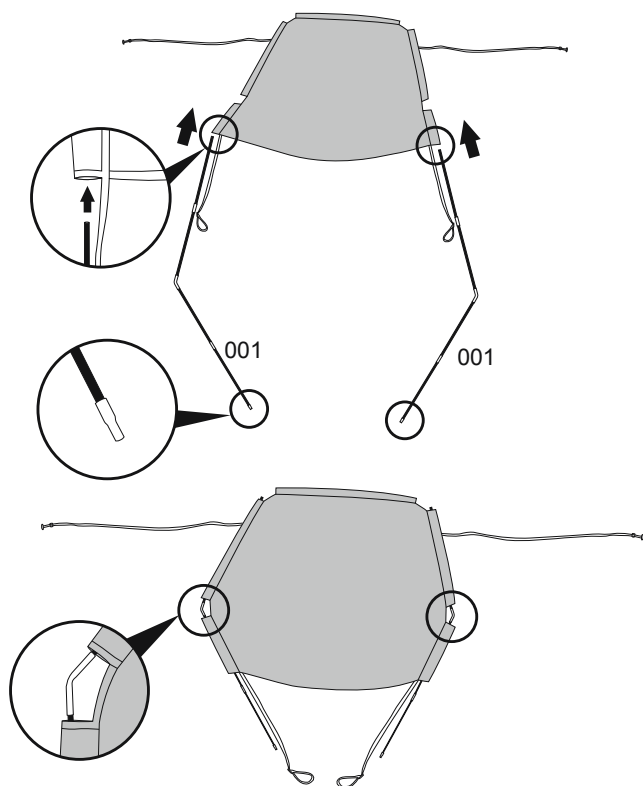
1.



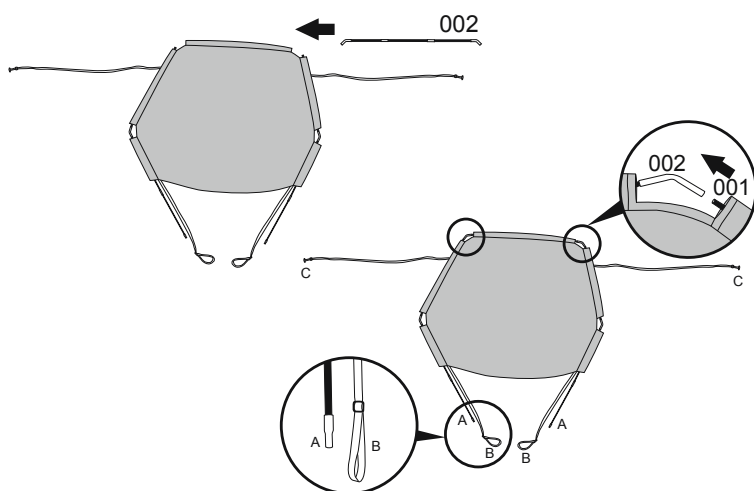
2.



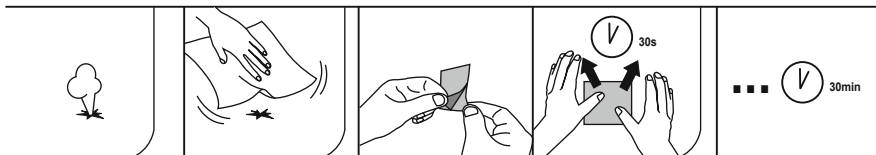
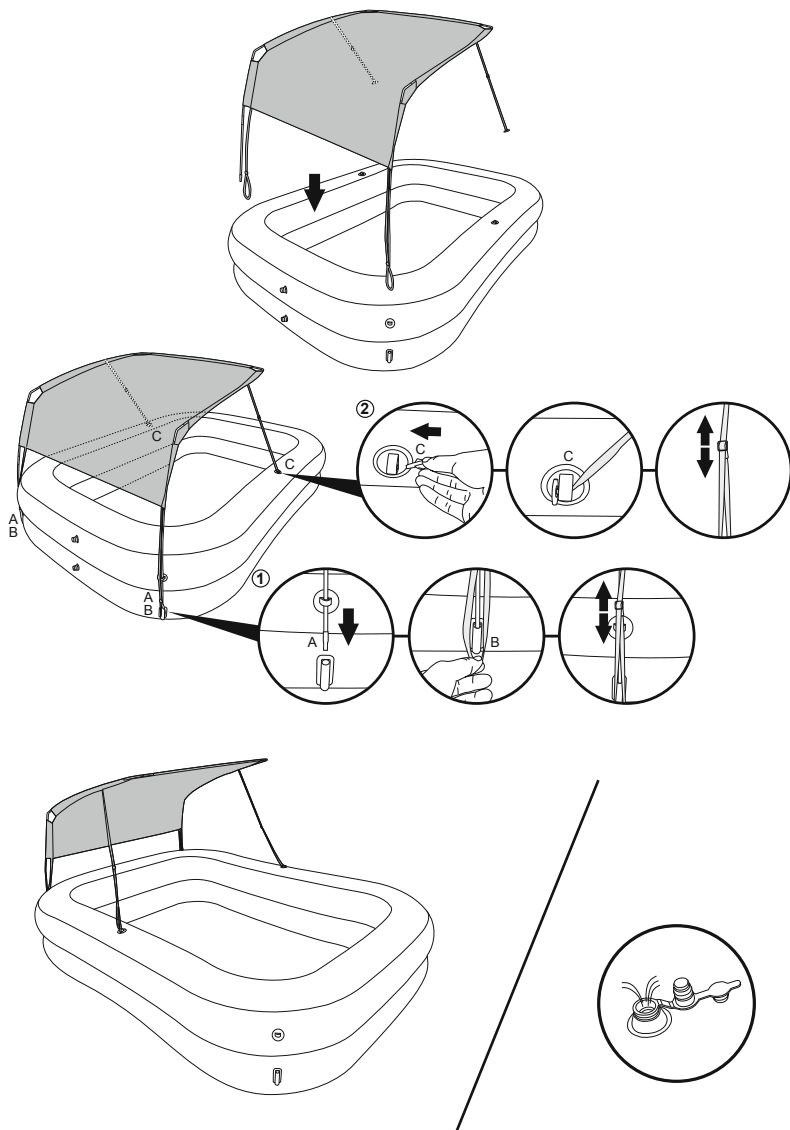
3.



4.



5.



# OWNER'S MANUAL

## WARNING

### Safety information

Carefully read, understand, and follow all information in the user manual before installing and using the mini-pool. These warnings, instructions, and safety guidelines address some common risks of water recreation, but they cannot cover all risks and dangers in all cases. Always use caution, common sense, and good judgment when enjoying any water activity. Retain this information for future use.

### Non Swimmers safety

- Continuous, active, and vigilant supervision of weak swimmers and non-swimmers by a competent adult is required at all times (remembering that children under five are at the highest risk of drowning).
- Designate a competent adult to supervise the pool each time it is being used.
- Weak swimmers or non-swimmers should wear personal protection equipment when using the mini-pool.
- When the mini-pool is not in use, remove all toys and appealing objects from the water and the coping to avoid attracting children to the mini-pool.
- When the mini-pool is not in use, remove all toys or other objects from its surrounding that could be used by a child as a device to facilitate the access into the mini-pool (e.g. chairs, big toys, etc.).

### Safety devices

- It is recommended to install a barrier (and secure all doors and windows, where applicable) to prevent unauthorized access to the mini-pool.
- Personal protective equipment, barriers, pool covers, pool alarms, or similar safety devices are helpful aids, but they are not substitutes for continuous and competent adult supervision.

### Safety equipment

- Keep a working phone and a list of emergency phone numbers near the mini-pool.

### Safe use of the mini-pool

- Encourage all users especially children to learn how to swim.
- Learn Basic Life Support (Cardiopulmonary Resuscitation - CPR) and refresh this knowledge regularly. This can make a life-saving difference in the event of an emergency.
- Instruct all mini-pool users, including children, what to do in case of an emergency.
- Never dive into any shallow body of water. This can lead to serious injury or death.
- Do not use the mini-pool when using alcohol or medication that may impair your ability to safely use the mini-pool.
- When pool covers are used, remove them completely from the water surface before entering the pool.
- Replace water regularly according to manufacturer recommendations and depending on hygienic conditions, its cleanliness, its clarity, and its odour, or if any debris or stains are present in the mini-pool. Use of chemicals in mini-pools without water circulation may result in direct contact with the chemicals or in areas of high chemical concentration resulting in injury to the users.
- If chemicals are occasionally used to reduce the frequency of water replacement, follow chemicals manufacturer instructions closely (especially never use more than recommended), ensure the appropriate mixing of chemicals to avoid possible personal injuries and store chemicals out of reach of children.
- The use and installation of any electrical appliances around mini-pools shall be in accordance with the national regulations.
- Where applicable, remove any means of access from the mini-pool and store it out of reach of children whenever the mini-pool is not in use.
- Use of accessories not approved by the mini-pool manufacturer (e.g. ladders, covers, pumps, etc.) may result in risks of injuries or property damages.
- Use the signage as outlined below.



### Keep children under supervision in the aquatic environment.

#### No diving.

- Please read carefully and follow the safety warnings and safety signs on the pool wall.
- Selection of appropriate location to prevent the hazard of drowning of young children, install the mini-pool in a place where it is possible for the supervision to be constant.

### PLEASE READ CAREFULLY AND SAVE THESE INSTRUCTIONS FOR FUTURE REFERENCE.

## PREPARATION

### Recommendations regarding placement of the pool:

- Do not install the pool on a slope or inclined surfaces, on soft or loose soil conditions (such as sand or mud), or on an elevated surface such as a deck, platform or balcony, which may collapse under the weight of the filled pool.
- It is essential that the product is set up on solid, level ground. If the pool is set up on uneven ground, it can cause serious personal injury and/or damage to personal property.
- The ground must be cleared of all objects and debris including stones and twigs.
- Check with your local city council for by-laws relating to fencing, barriers, lighting and safety requirements and ensure you comply with all laws.

## ASSEMBLY

1. Take the pool and accessories out of the carton with care and spread out the pool on to the selected site.
2. To inflate the pool, start from the bottom chamber and work your way to the top chamber and close the safety valves after inflation. Do not over-inflate your pool.
3. Slowly fill the pool to a proper water level, if there is a fill line, reach but do not exceed the fill line on the pool's interior. **DO NOT OVERFILL** as this could cause the pool to collapse.  
**ATTENTION:** Do not leave pool unattended while filling with water.
4. Refer to the item name or number stated on the packaging. Packaging must be read carefully and kept for future reference.

**NOTE:** All drawings for illustration purpose only. May not reflect actual product. Not to scale.

## EMPTY THE POOL

- Deflate all the air chambers, at the same time push down the wall of the pool to release the water.

**NOTE:** Drain by adult only!

## POOL MAINTENANCE

- **WARNING:** If you do not adhere to the maintenance guidelines covered herein, your health might be at risk, especially that of your children.
- Change the water of pools frequently (particularly in hot weather) or when noticeably contaminated, unclean water is harmful to the user's health.

## CLEANING AND STORAGE

1. After use, use a damp cloth to gently clean all surfaces.  
**NOTE:** Never use solvents or other chemicals that may damage the product.
2. Air dry the pool, once pool is completely dry, fold pool carefully and put back to its original packing. If pool is not completely dry, mould may result and will damage the pool.
3. Store in a dry place, with a temperature higher than 15°C / 59 °F, out of reach of children.