



[www.bestwaycorp.com](http://www.bestwaycorp.com)

**©2023 Bestway Inflatables & Material Corp.**

All rights reserved/Tous droits réservés/Todos los derechos reservados/Alle Rechte vorbehalten/Tutti i diritti riservati

Trademarks used in some countries under license from/

Marques utilisées dans certains pays sous la licence de/

Marcas comerciales utilizadas en algunos países bajo la licencia de/

Die Warenzeichen werden in einigen Ländern verwendet unter Lizenz der/

Marchi utilizzati in alcuni paesi concessi in licenza a

**Bestway Inflatables & Material Corp., Shanghai, China**

Manufactured, distributed and represented in the European Union by/

Fabriqués, distribués et représentés dans l'Union Européenne par/Fabricado, distribuido y representado en la Unión Europea por/

Hergestellt, vertrieben und in der Europäischen Union vertreten von/Prodotto, distribuito e rappresentato nell'Unione Europea da

**Bestway Europe S.p.a., Via Resistenza, 5, 20098 San Giuliano Milanese (Milano), Italy**

Distributed in Latin America by/Distribué en Amérique latine par/Distribuido en Latinoamérica por/Distribuido na América Latina por

**Bestway Central & South America Ltda, Salar Ascotan 1282, Parque Enea, Pudahuel, Santiago, Chile**

Distributed in Australia & New Zealand by **Bestway Australia Pty Ltd, Unit 2/98-104 Camarvon St Silverwater, NSW 2128, Australia**

Tel: Australia: +61 2 9037 1388; New Zealand: +0800 142 101

Distributed in United Kingdom by **Bestway Corp UK Ltd, 8 Wentworth Road, Heathfield Industrial Estate, Newton Abbot, Devon, TQ12 6TL**

Exported by/Exporté par/Exportado por/Exportiert von/Esportato da

**Bestway (Hong Kong) International Ltd./Bestway Enterprise Company Limited**

**Suite 713, 7/Floor, East Wing, Tsim Sha Tsui Centre, 66 Mody Road, Kowloon, Hong Kong**

**[www.bestwaycorp.com](http://www.bestwaycorp.com)**

## OWNER'S MANUAL

### WARNING



Never leave your child unattended – drowning hazard.

**KEEP ASSEMBLY AND INSTALLATION INSTRUCTION FOR FUTURE REFERENCE. THE TOY CONTAINS SMALL PARTS, IT SHOULD BE ASSEMBLED BY AN ADULT.**

- Only for domestic use.
- Only for outdoor use.
- Children can drown in very small amounts of water. Empty the pool when not in use.
- Do not install the paddling pool over concrete, asphalt or any other hard surface.
- Place the product on a level surface at least 2 m from any structure or obstruction such as a fence, garage, house, overhanging branches, laundry lines or electrical wires.
- Recommend back towards the sun when playing.
- Modification by the consumer of the original paddling pool (for example the addition of accessories) shall be carried out according to the instructions of the manufacturer.
- Make sure the pool and slide are always connected while in use; do not exceed the maximum weight: 45 kg / 99 lbs. One person on the slide at a time. For 53087, do not exceed the maximum weight: 144kg / 317lbs, and the maximum users on the slide is two persons at a time.
- Children must remove shoes and glasses, as well as any sharp or hard objects from their pockets, as they may puncture the slide surface.
- Always keep the slide entrance free from obstruction.
- Do not allow food, drink or gum inside unit.
- Do not allow users to do somersaults or rough play.
- Do not allow users to climb or hang on containing walls.

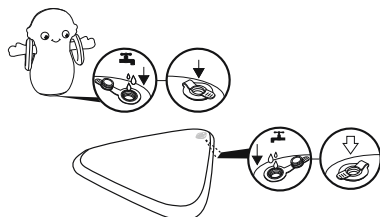
### PREPARATION

#### Recommendations regarding placement of the pool:

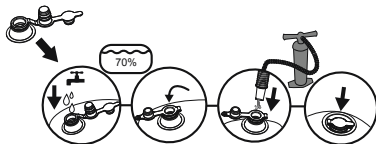
- It is essential the pool is set up on solid, level ground. If the pool is set up on uneven ground it can cause collapse of the pool and flooding, causing serious personal injury and/or damage to personal property.
- Do not set up on driveways, decks, platforms, gravel or asphalt. Ground should be firm enough to withstand the pressure of the water; mud, sand, soft / loose soil or tar are not suitable.
- The ground must be cleared of all objects and debris including stones and twigs.
- Check with your local city council for by-laws relating to fencing, barriers, lighting and safety requirements and ensure you comply with all laws.

### ASSEMBLY

1. Open the water valve to fill water in the water chamber.  
(Only for product with water chamber)

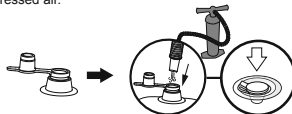


2. Open the 3-interconnecting valve to fill water in the water chamber and close the first cap, then inflate the same chamber with air pump (not included). Close the valve after inflation and press it into the air chamber.  
(Only for product with 3-interconnecting valve)

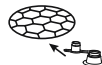


3. Open the safety valves and inflate the parts one by one. Be sure to close the valves after inflation. Air pump is not included.

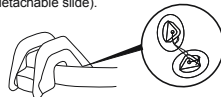
**NOTE:** Do not over inflate. Do not use either an air compressor or compressed air.



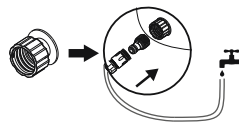
**NOTE:** For inflatable floor, the air valve is on the bottom side of the product.



4. Connect the slide to the pool by tighten the rope.  
(Only for product with detachable slide).



5. Connect your garden hose to the hose adapter.



6. Slowly fill the pool to a proper water level, if there is a fill line, reach but do not exceed the fill line on the pool's interior. **DO NOT OVERFILL** as this could cause the pool to collapse.

**ATTENTION:** Do not leave pool unattended while filling with water.

Proper Water Level



**NOTE:** All drawings for illustration purpose only. May not reflect actual product. Not to scale.

### EMPTY THE POOL

1. Check local regulations for specific directions regarding disposal of swimming pool water.
2. Deflate all the air chambers, at the same time push down the wall of the pool to release the water.

**NOTE:** Drain by adult only!

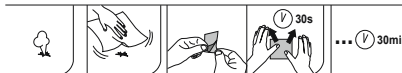
### POOL MAINTENANCE

**WARNING:** If you do not adhere to the maintenance guidelines covered herein, your health might be at risk, especially that of your children.

- Change the water of pools frequently (particularly in hot weather) or when noticeably contaminated, unclear water is harmful to the user's health.
- Please contact your local retailer to obtain chemicals to treat the water in your pool. Be sure to follow the chemical manufacturer's instructions.

### CLEANING AND STORAGE

1. After use, use a damp cloth to gently clean all surfaces.  
**NOTE:** Never use solvents or other chemicals that may damage the product.
2. Air dry the pool, once pool is completely dry, fold pool carefully and put back to its original packing. If pool is not completely dry, mould may result and will damage the pool.
3. Store in a dry place, warmer than 15°C, out of reach of children.



Item	Aged
53052; 53067; 53068; 53069; 53093; 53092; 53097; 53117; 53126; 91097; 98793; 53160; 98800	2+

Refer to the item name or number stated on the packaging.  
Packaging must be read carefully and kept for future reference.