

Alienware Pro Wireless Gaming Mouse

User's Guide

Regulatory Model: PRO-MS/PRO-M-D

A L I E N W A R E™ 



NOTE: A NOTE indicates important information that helps you make better use of your computer peripheral.



CAUTION: A CAUTION indicates potential damage to hardware or loss of data if instructions are not followed.



WARNING: A WARNING indicates a potential for property damage, personal injury, or death.

Copyright © 2024 Dell Inc. or its subsidiaries. All rights reserved. Dell Technologies, Dell, and other trademarks are trademarks of Dell Inc. or its subsidiaries. Other trademarks may be trademarks of their respective owners.

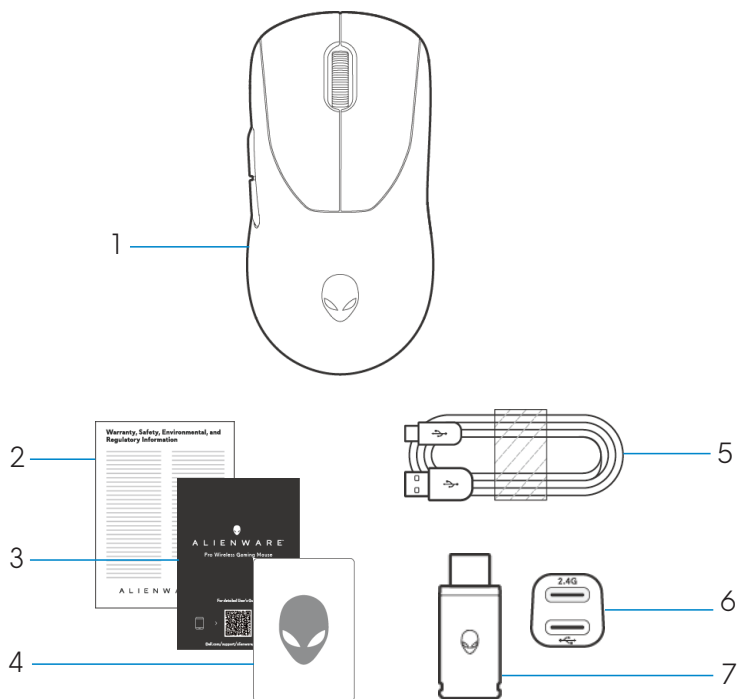
2024 – 07

Rev. A01

Contents

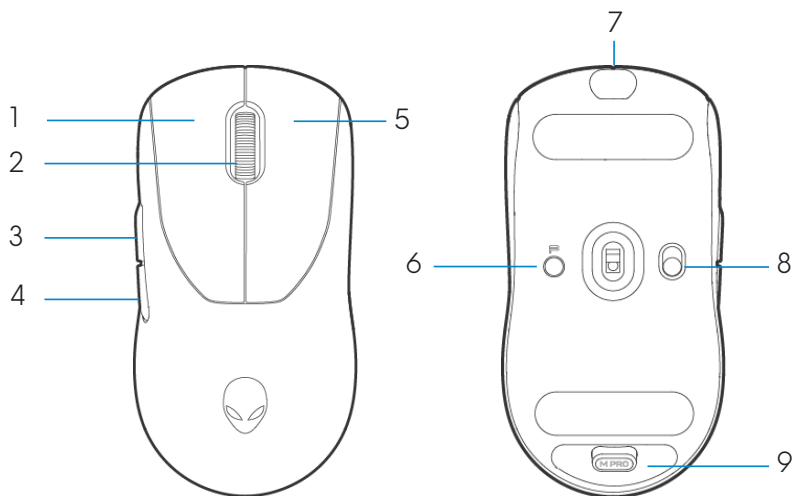
| | |
|---|-----------|
| What's in the box | 4 |
| Product overview | 5 |
| Features | 6 |
| Setting up the mouse | 7 |
| Turning on your Alienware Pro Wireless Gaming Mouse.. | 7 |
| 2.4G Wireless connection mode using the Type-C dongle | 8 |
| Wireless connection mode using the extender | 9 |
| Setting up the mouse | 10 |
| Wired connection mode | 10 |
| Charging the mouse | 11 |
| Low battery | 12 |
| Alienware Command Center (AWCC) | 13 |
| Installing AWCC through Windows Update | 13 |
| Installing AWCC from the Dell Support website | 13 |
| Using Alienware Command Center 6.1 or later | 14 |
| Assign and create Keybind | 16 |
| Button Remapping | 18 |
| Controls | 19 |
| Configuring DPI level and Polling rate | 20 |
| Calibration of Lift-Off Distance (LOD) | 22 |
| Battery | 23 |
| Sleep mode | 24 |
| Update firmware and restore factory defaults | 25 |
| Firmware update | 26 |
| USB dongle pairing | 27 |
| Specifications | 28 |
| Troubleshooting | 29 |
| Charging power requirement | 31 |
| Statutory information | 35 |

What's in the box



1. Alienware Pro Wireless Gaming Mouse
2. Regulatory document
3. Quick Start Guide
4. Alienware sticker
5. USB-A to USB-C charging cable
6. Extender
7. Type-C dongle

Product overview



- 1. Left button
- 2. Scroll wheel
- 3. Forward button
- 4. Backward button
- 5. Right button

- 6. Preset button
- 7. USB-C Port
- 8. Power Slider
- 9. Dongle Storage

Features

Alienware Pro Wireless Gaming Mouse is Alienware's first professional-approved gaming mouse, design and engineered for Esports.

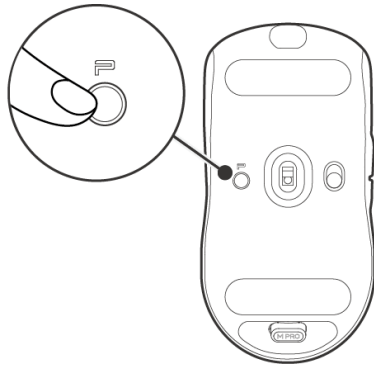
Key features include:


- Gaming grade 4KHz/8KHz wireless and wired polling rate
- Long lasting 120/32 hours of battery life at 1KHz/4KHz
- Ultra lightweight <60g design
- Optical switches with Alienware-exclusive Magnetic-Force Keyplates.
- High performance sensor with 26,000 DPI, 650 IPS and 50G acceleration
- PTFE feet with no additives

DPI

- The Preset button switches through five adjustable DPI values.
- On the first press, the current DPI level color is displayed on the LED.
- Subsequent press of the button changes the DPI level. DPI level and its associated colors are indicated in the following table.

| Level | Color (DPI) |
|-------|------------------------|
| DPI1 | White (Default 400) |
| DPI2 | Teal (Default 800) |
| DPI3 | Magenta (Default 1200) |
| DPI4 | Green (Default 1600) |
| DPI5 | Red (Default 2400) |



 **NOTE: The default DPI is 800. Setting DPI to zero will remove the DPI level. You can change the DPI setting and customize the DPI level using Alienware Command Center (AWCC).**

 **NOTE: 1. The default polling rate is 1000 Hz.**

2. The polling rate is configurable in AWCC (refer to pages 19 and 20) and the maximum polling rate of each connectivity are as follows:

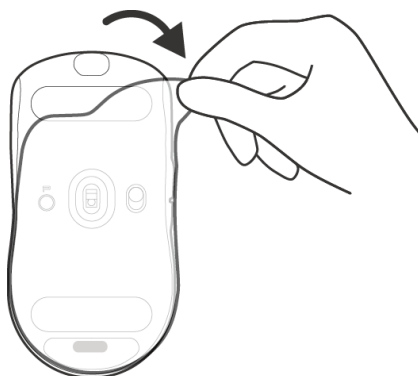
a. Wired mode: 8000 Hz

b. Wireless mode: 4000 Hz

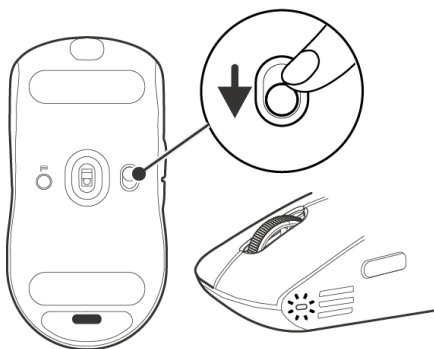
Setting up the mouse

Turning on your Alienware Pro Wireless Gaming Mouse.

1. Remove the protective sheet from the mouse.

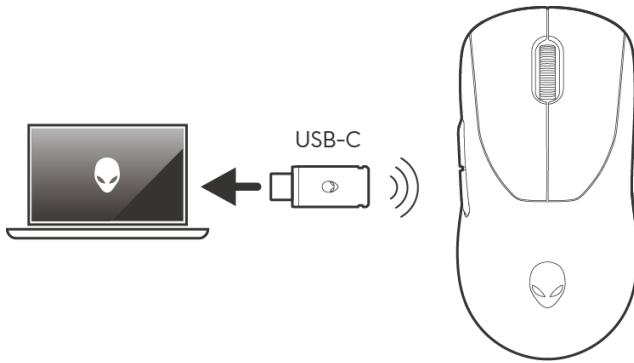


2. Slide the power slider down to turn on the mouse.



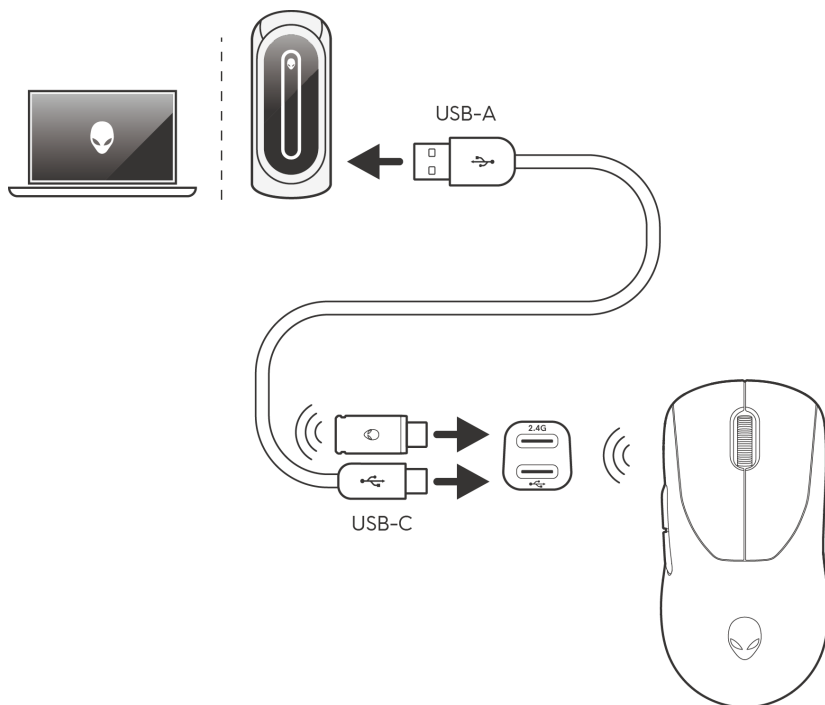
2.4G Wireless connection mode using the Type-C dongle

Connect the USB-C dongle to your computer.



Wireless connection mode using the extender

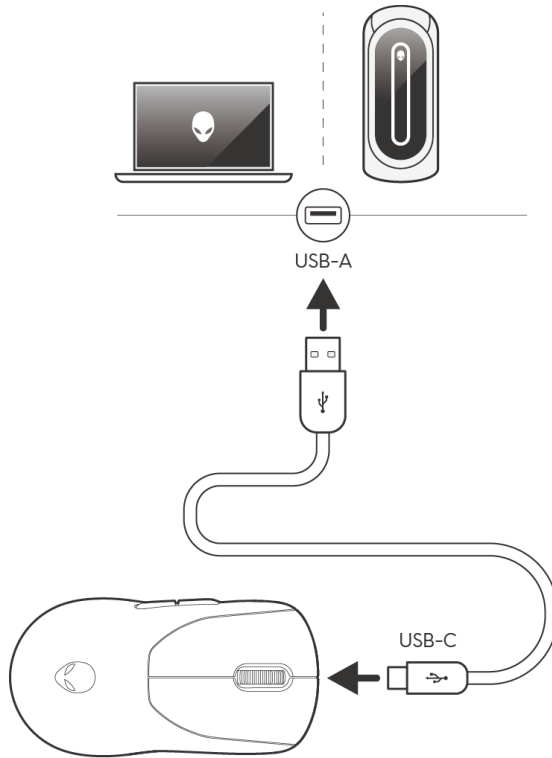
1. Connect the USB-C side of the cable to the extender.
2. Connect the Type-C dongle to the extender.
3. Connect the USB-A side of the cable to your computer.



NOTE: It is recommended to use dongle extender to enhance wireless connection stability.

Wired connection mode

Connect the USB-C side of the cable to your mouse and connect the USB-A side of the cable to the USB port on your computer.



 **NOTE:** The battery starts charging automatically in wired mode.

Charging the mouse

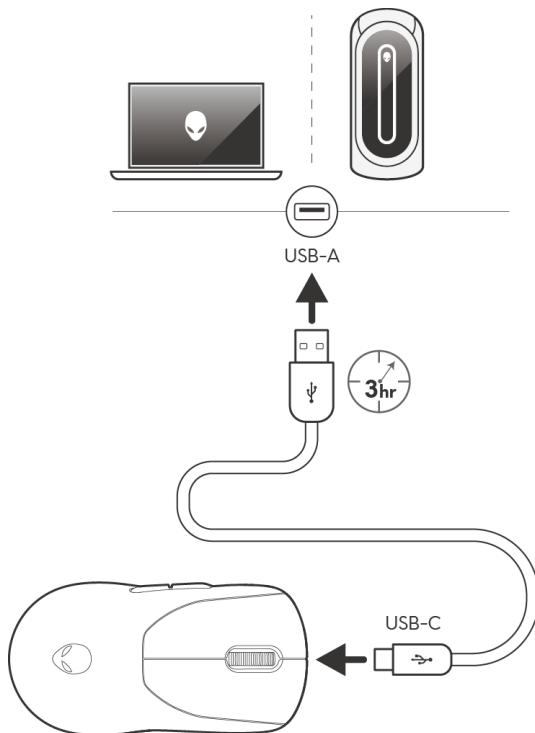
European Union (EU) has a common charger requirement for wireless products that have embedded rechargeable battery. For more information about the EU charging power requirements, see Charging power requirement.

1. Connect the USB-C end of the charging cable to the USB-C port on the mouse.
2. Connect the other end of the USB charging cable to an available USB port on your desktop or laptop.
3. Charge the mouse for three hours during the first charge.



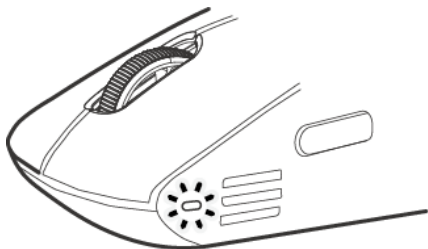
NOTE:

1. To preserve battery life, please turn off the mouse when not in use.
2. During charging, the LED displays amber if the mouse is ON. If the mouse is OFF, the amber lighting turns off after 10 seconds.
3. When fully charged, the LED indicator lighting turns off.



Low battery

When the battery is lower than 10%, the LED on the side of the mouse blinks in amber color.



NOTE: Battery Saver is off by default when out of the box.

Alienware Command Center (AWCC)

Installing AWCC through Windows Update

Connect your Alienware peripheral to your computer using the USB port. A prompt appears informing you that AWCC installation is initiated.

The AWCC application is downloaded and installed automatically. AWCC installation takes up to ten minutes to complete.

Installing AWCC from the Dell Support website

1. Download AWCC 6.1 or later versions of the application by following the steps below:

- a. Go to **www.dell.com/driver**.
- b. Type "Alienware Pro Wireless Gaming Mouse" in **Identify your product or search support** text box then click **Search**.
- c. Select Windows 11 under the Operating system.
- d. Download the appropriate software type for your computer.

NOTE:

- **If you have a non-Alienware or a non-Dell computer, click the Download button of the Alienware Command Center Application for third-party computer.**
- **If your computer already has AWCC preinstalled, and you want to reinstall the software, click on the Download button of the Alienware Command Center Application.**

2. Browse the folder where you saved the setup files.

3. Double-click the setup file and follow the on-screen instructions to install the application.

You will see the **Alienware Command Center** under **All apps** in **Start** menu after the application is installed successfully. Launch **Alienware Command Center** to start the application from the **Start** menu.

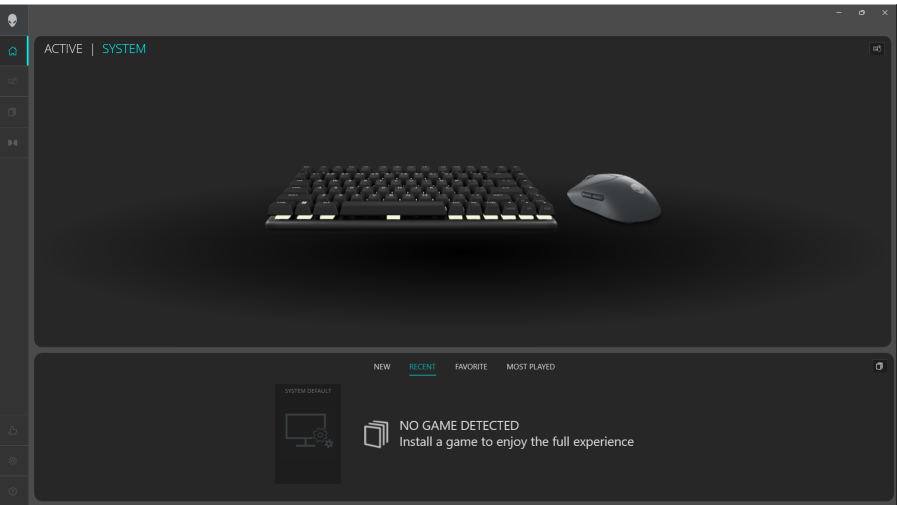
Using Alienware Command Center 6.1 or later

Alienware Command Center is an application to configure supported Dell gaming devices.

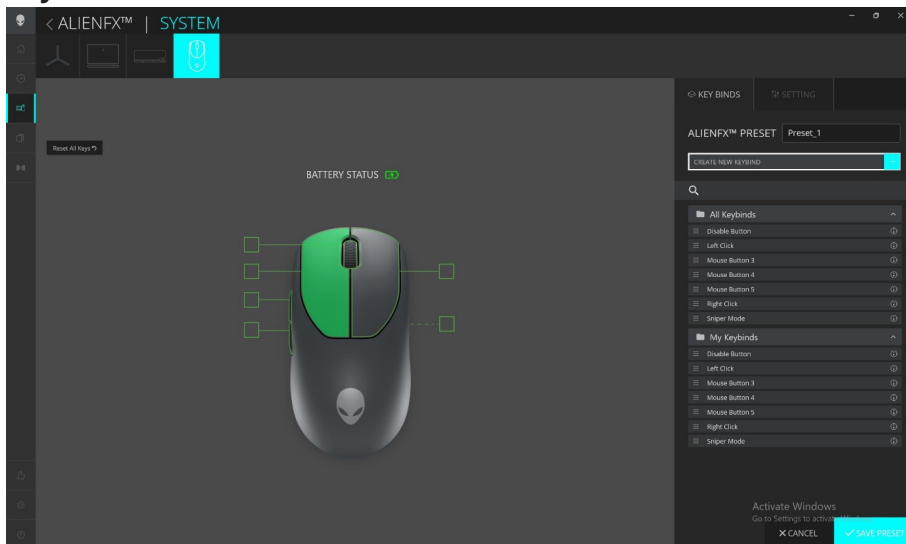
Dashboard screen



Dashboard screen on non-Alienware and non-Dell computers



Key features

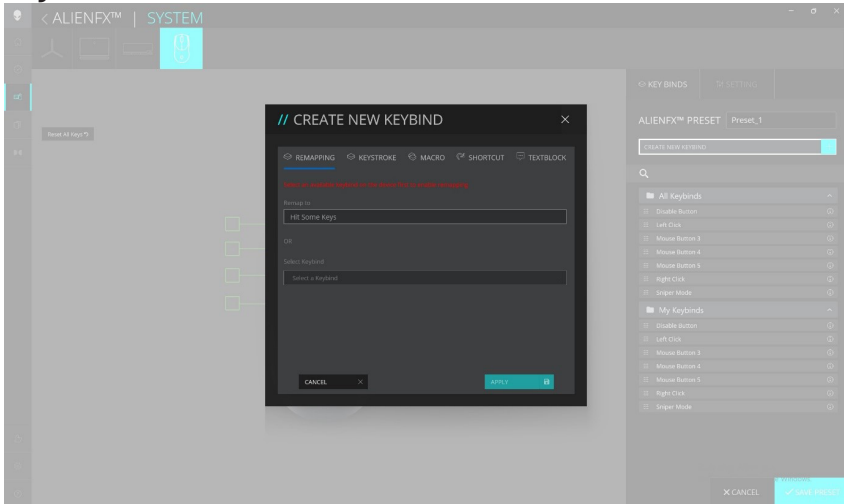


1. Click the Alienware Pro Wireless Gaming Mouse image on the **DASHBOARD** to go to **ALIENFX**.
 2. In the **SYSTEM** tab, select **ALIENFX PRESET**. You can perform the following functions:
 - a. **KEY BINDS**: Reassign the function of the buttons and scroll wheel.
 - b. **SETTING**: Configure the device settings.
- Battery level indicator** – the battery level and the battery level indicator icon are shown in the mouse image. The indicator is shown in blue or green color when the battery level is Normal. The indicator turns yellow color when the battery level is low and red color when the battery level is critically low.
- Charging indicator** – The battery level indicator is overlaid with a lightning symbol during battery charging.
- Button Remapping** – 1-to-1 key key replacement to facilitate the user's quick and easy assignment of keybinding. Also includes ability to click directly on the Mouse Button to create macro
3. Click **SAVE PRESET** to save your changes.


Assign and create Keybind

Keybind is a feature for the user to reassign the original function of the buttons, the scroll wheel and the DPI button to another function.

Keybind creation

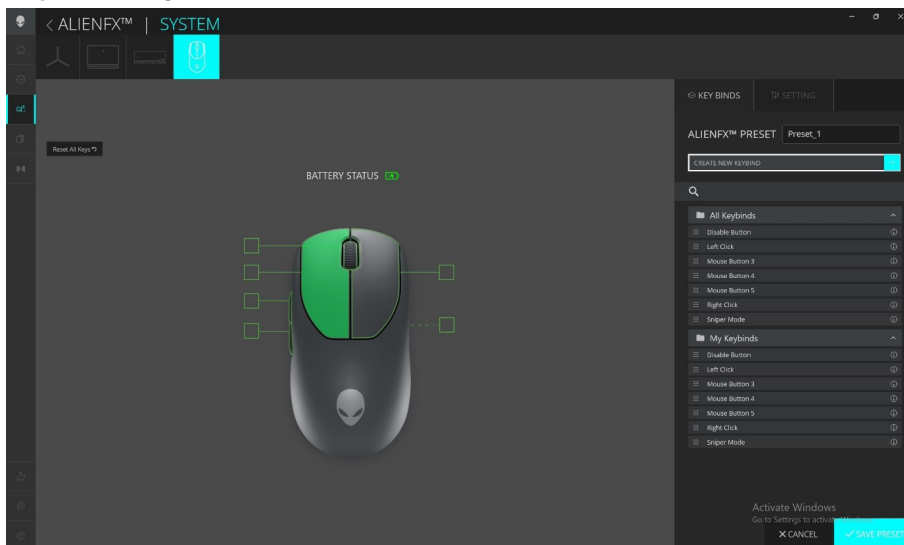


1. Click the **ALIENFX** icon.
2. In the **SYSTEM** tab, select **ALIENFX PRESET**. Select **KEY BINDS** from the right panel.
3. Click **CREATE NEW MACRO** or **Select any Button** to create a new keybind of the following types and map the keybind to a button or the scroll wheel.
 - a. **REMAPPING**- Button Remapping can be done by selecting any key on the mouse in AWCC. Remapping cannot be done by using Create new Macro Option
 - b. **KEYSTROKE** – Select a keystroke by pressing a key on the keyboard.
 - c. **MACRO** – Record a series of keystrokes.

 **NOTE: KEYSTROKE and MACRO keybinds can repeat the keystroke once, repeat by switching the keystroke. Repeat the keystroke while button or scroll wheel is pressed or to repeat the keystroke for several times.**

 - d. **SHORTCUT** – Open a program file, a folder, a computer, or an Internet address.
 - e. **TEXTBLOCK** – Record a block of text.
4. Click **RESET ALL KEYS** to clear all the keybind assignment.
5. Click **SAVE PRESET** to save your changes.

Keybind assignment



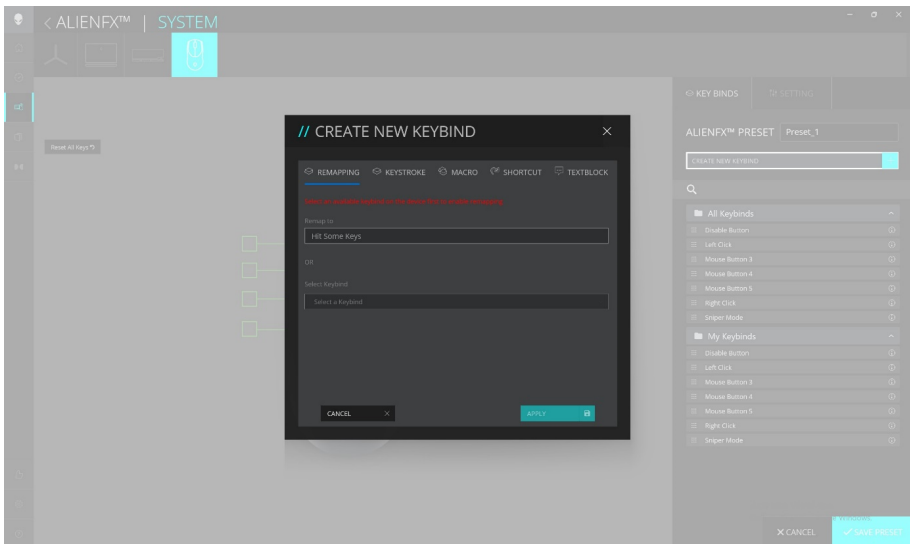
1. Click the **ALIENFX** icon.
2. In the **SYSTEM** tab, select **ALIENFX PRESET**. Select **KEY BINDS** from the top-right panel.
3. Drag an existing Keybind from the **All Keybinds** or **My Keybinds** folder and drop it on any of the six buttons or the scroll wheel. There are a number of predefined keybinds that can be customized:
 - a. **Disable Button** – Disable the function of the button or scroll wheel.
 - b. **Left Click** – Left button click function.
 - c. **Right Click** – Right button click function.
 - d. **Sniper Mode** – Reduce the DPI to the lowest level to improve tracking accuracy.
 - e. **Mouse Button 3** – Custom macro to be assigned to mouse button 3 (front button on left side of mouse)
 - f. **Mouse Button 4** – Custom macro to be assigned to mouse button 4 (rear button on left side of mouse)
4. Click **SAVE PRESET** to save your changes.

Button Remapping

1. Click on the Pro Wireless Gaming keyboard image in the **DASHBOARD** to go to **ALIENFX**.
2. Select any key except **Profile Key (P-Key)** which needs to be remapped with other key/existing keybind
3. Click **APPLY** in popup.
4. Click **SAVE PRESET** to save your changes.

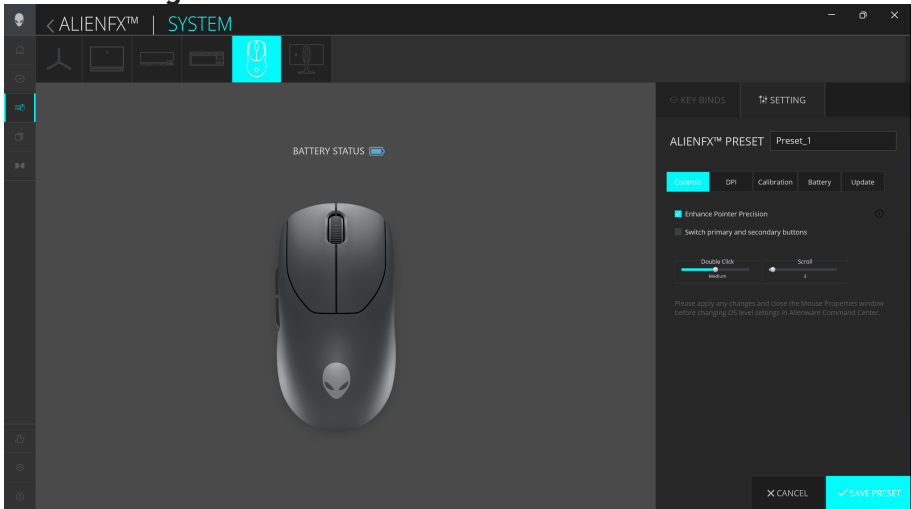


NOTE: You cannot remap for the left and right button.



Controls

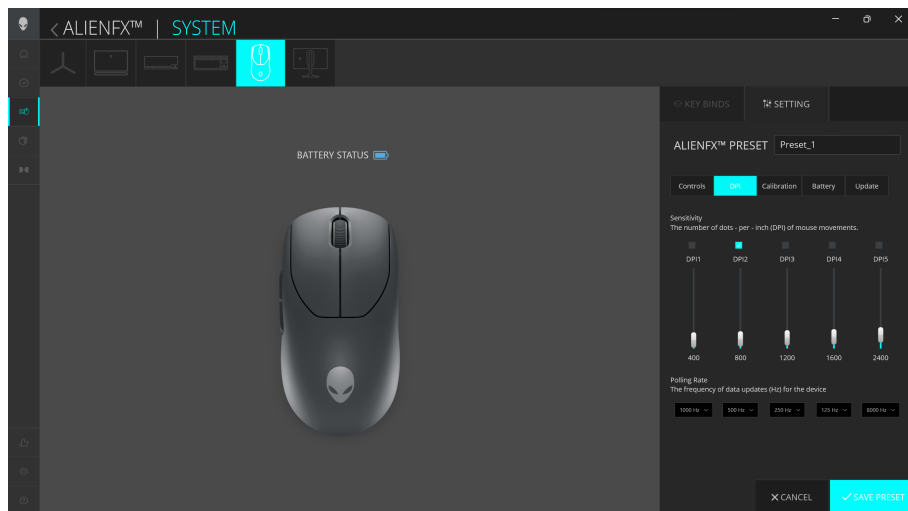
Device settings



1. Click **ALIENFX** icon.
2. In the **SYSTEM** tab, select **ALIENFX PRESET**. Select **SETTING** from the right panel, and then click **Controls**.
3. In the **SETTING** tab, you can configure the following settings:
 - a. **Enhance Pointer Precision** – Select the check box to enhance the mouse pointer precision.
 - b. **Switch primary and secondary buttons** – Select the check box to swap the left button function to the right button function and the opposite way.
 - c. **Double Click** – Move the slider to adjust the double click duration from slow to fast.
 - d. **Scroll** – Move the slider to adjust the number of lines to scroll on every notch of the scroll wheel from 1 to 100.
4. Click **SAVE PRESET** to save your changes.

Configuring DPI level and Polling rate

Alienware Pro Wireless Gaming Mouse can be configured and preset with five different accuracy levels in the Dots Per Inch (DPI) unit and five different polling rates.



1. Click the **ALIENFX** icon.
2. In the **SYSTEM** tab, select **ALIENFX PRESET**. Select **SETTING** from the right panel, and then click **DPI**.

You see five different DPI stages and their respective DPI levels.

3. Select the current DPI stage by clicking on the check box above the DPI number (DPI1 to DPI5) in AWCC, or pressing the **Preset** button on the mouse.
4. Change the DPI level of any DPI stage from 0 to 26,000 (except for DPI1 where the range is from 100 to 26,000) by pulling the slider up or down. Setting the level by sliding the DPI level to 0 disables the DPI stage (DPI1 cannot be disabled).

You may also toggle through the DPI stages by pressing the **Preset** button on the mouse. The default DPI levels are as follows:

- Stage 1: 400
- Stage 2: 800 (default)
- Stage 3: 1200
- Stage 4: 1600
- Stage 5: 2400

5. Switch the DPI and polling rate by pressing the **Preset** button.

6. Configure the polling rate.

To configure up to 8KHz in wired mode.

- a. Connect the cable to the mouse.
- b. Change the polling rate of every DPI stage from the **Polling Rate** drop-down list at the bottom of each DPI level slider.
- c. Switch the DPI and polling rate by pressing the **Preset** button.

To configure up to 4KHZ in wireless mode.

- a. Connect the dongle to the mouse.
- b. Change the polling rate of every DPI stage from the **Polling Rate** drop-down list at the bottom of each DPI level slider.
- c. Switch the DPI and polling rate by pressing the **Preset** button..



NOTE: 1. The default polling rate is 1000 Hz. The maximum polling rates of each connectivity are as follows:

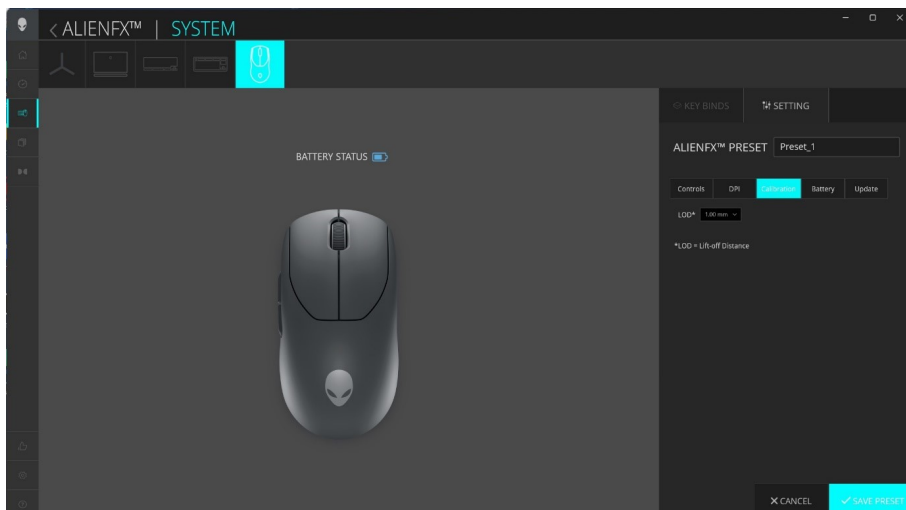
a. Wired mode: 8000 Hz

b. Wireless mode: 4000 Hz

Calibration of Lift-Off Distance (LOD)

Alienware Pro Wireless Gaming Mouse enables you to calibrate the Lift-Off Distance (LOD). The LOD of the Alienware Pro Wireless Gaming Mouse can be tracked when the mouse is lifted from the tracking surface at or below the LOD setting.

LOD calibration

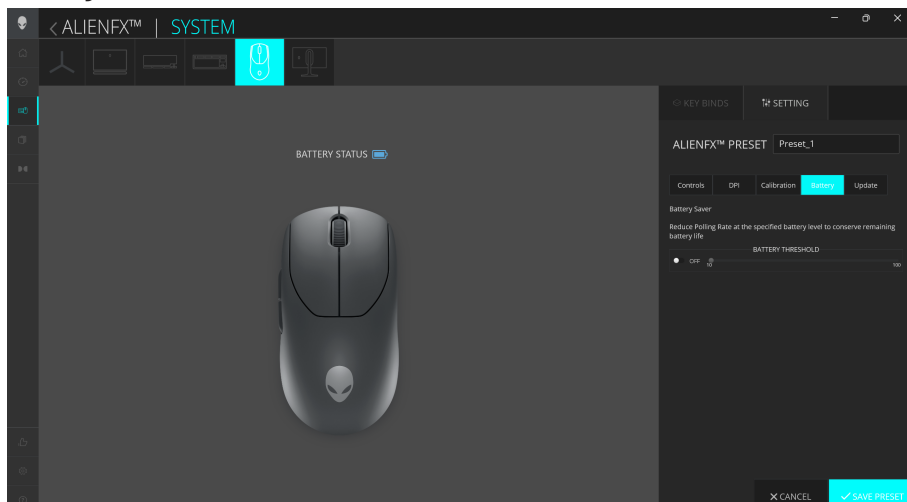


1. Click the **ALIENFX** icon.
2. In the **SYSTEM** tab, select **ALIENFX PRESET**. Click **SETTING** from the right panel, and then click **Calibration**.
3. Click the **LOD** drop-down list to select either 1.00 mm or 2.00 mm of the LOD. The default value is 1.00 mm.
4. Click **SAVE PRESET** to save your changes.

Battery

Alienware Pro Wireless Gaming Mouse enables you to adjust the Battery Saver mode to reduce its battery consumption.

Battery saver



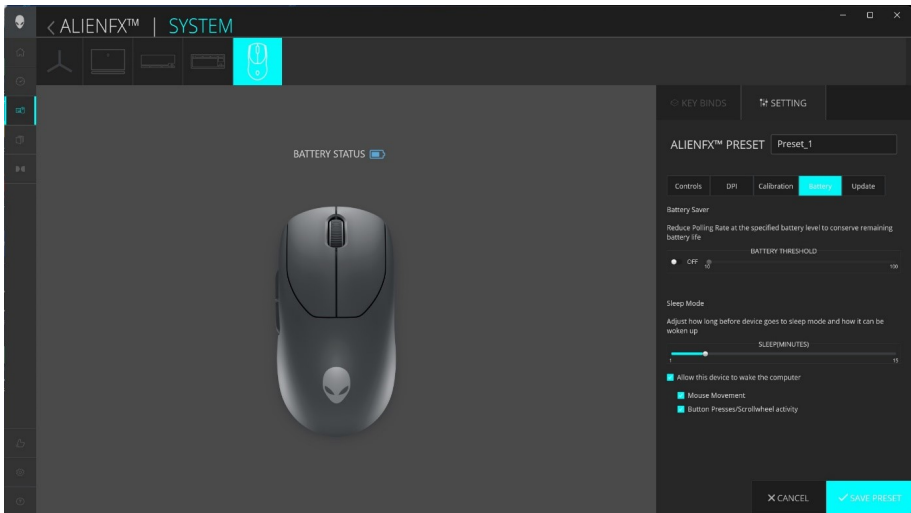
1. Click **ALIENFX** icon.
2. In the **SYSTEM** tab, select **ALIENFX PRESET**. Click **SETTING** from the right panel, and then click **Battery**.
3. Click the **ON** button to enable Battery Saver mode at the battery level set on the slider.
4. Move the slider to select the battery level to enable the Battery Saver mode.
5. Click **SAVE PRESET** to save your changes.




NOTE: The polling rate of the mouse is set to 1KHz when Battery Saver mode is switched ON.

Sleep mode

Alienware Pro Wireless Gaming Mouse enables you to adjust the Battery Saver mode to reduce its battery consumption.

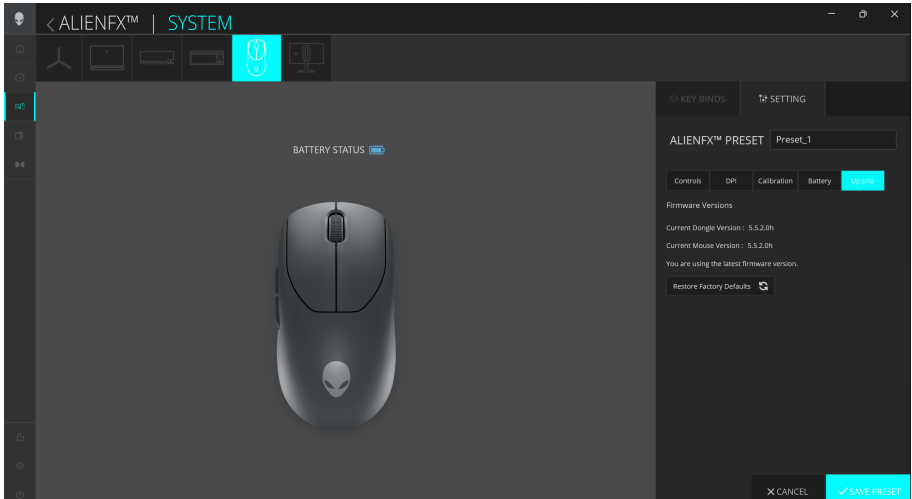


1. Click **ALIENFX** icon.
2. In the **SYSTEM** tab, select **ALIENFX PRESET**. Click **SETTING** from the right panel, and then click **Battery**.
3. Move the Sleep slider under Sleep Mode to adjust the time when the Mouse has to go to sleep mode.
4. To wake up mouse below options can be used.
 - Mouse Movement
 - Button Presses / Scrollwheel activity.
5. Click **SAVE PRESET** to save your changes.

 **NOTE:** The default sleep time is set at 3mins in which the Mouse will go to sleep mode automatically. The user may increase or decrease the time by adjusting the slider upto 15mins .

Update firmware and restore factory defaults

You can update the firmware of the dongle and the mouse when a new version is available. In addition, you can also reset the mouse setting to its factory settings with a single click.



1. Click **ALIENFX** icon.
2. In the **SYSTEM** tab, select **ALIENFX PRESET**. Click **SETTING** from the right panel, and then click **Update**.
3. View the firmware version and check if any new firmware is available. You must connect the Type-C dongle to the USB port and the mouse with the USB cable to upgrade your device firmware. Follow the on-screen instructions.
4. Click **Restore Factory Defaults** to reset the device to the manufacturing state.
5. Click **SAVE PRESET** to save your changes.

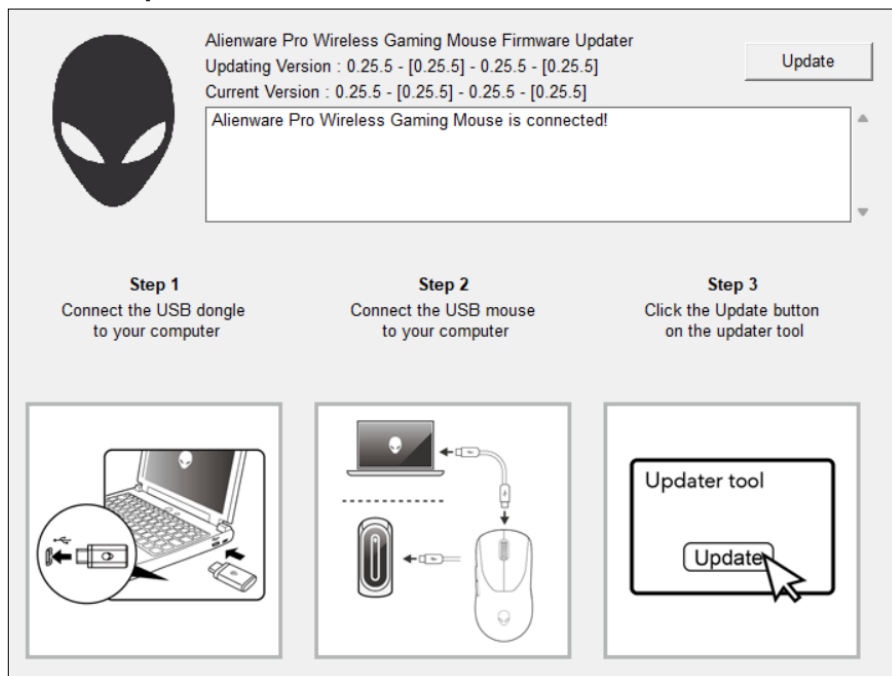


NOTE: Reset Factory Defaults feature resets all the mouse settings and configurations to the factory settings. AWCC applies the existing Lighting and Macro settings to the mouse when it is connected to the computer.


Firmware update

You can update the firmware of your Alienware Pro Wireless Gaming Mouse without using AWCC.

Firmware update tool

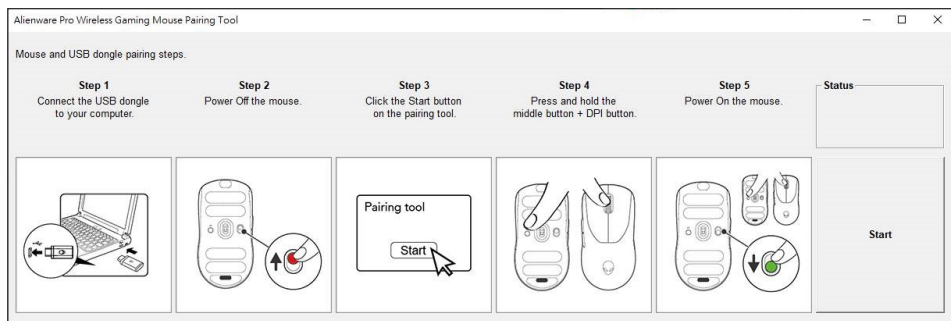


1. Go to **www.dell.com/driver**.
2. Type "Alienware Pro Wireless Gaming Mouse" in **Identify your product or search support** text box then click **Search**.
3. Click the **Download** button of the application **Pro Wireless Gaming Mouse Firmware Update Tool**.
4. Browse to the folder where you saved the setup files.
5. Double-click the **Firmware Update** file and follow the on-screen instructions to update the firmware of your Alienware Pro Wireless Gaming Mouse.


 **NOTE:** You cannot update until you have connected both the dongle to a USB port and the Alienware Pro Wireless Gaming Mouse by the cable to another USB port.

USB dongle pairing

You can pair the Type-C dongle or re-pair the dongle with your Alienware Pro Wireless Gaming Mouse.



1. Go to **www.dell.com/drivers**.
2. Type **Alienware Pro Wireless Gaming Mouse** in **Identify your product or search support** text box, and then click **Search**.
3. Click on the **Download** button of the application **USB Dongle Pairing**.
4. Browse to the folder where you saved the setup files.
5. Double-click the **PairingWizard** file and follow the on-screen instructions to pair your dongle with your Alienware Pro Wireless Gaming Mouse.

 **NOTE:** You cannot start pairing until you have connected both the dongle to the USB port and the Alienware Pro Wireless Gaming Mouse by the cable to another USB port.

Specifications

General

| | |
|---------------------------------------|-------------------------------------|
| Model number | Alienware Pro Wireless Gaming Mouse |
| Connection type | Wired and Wireless 2.4 GHz |
| Supported operating systems (2.4 GHz) | Microsoft Windows 10 – RS3 or later |

Electrical

| | |
|-------------------|----------------------|
| Operating voltage | 5 V |
| Charging current | Maximum up to 0.37 A |

Physical characteristics

| | |
|--------------------------------------|--|
| Mouse weight | <60 g (0.13 lb) |
| Mouse dimensions | 125 mm (4.9 in.) (L) x 64 mm(2.5 in.) (W) x 41 mm (1.6 in.) (H)(± 0.50 mm) |
| USB-A to USB-C charging cable weight | 33 g (0.07 lb) (± 5 g) |
| Type-C dongle weight | 2 g (0.005 lb)(± 1 g) |
| Extender weight | 2 g (0.005 lb) (± 1 g) |

Environmental

| | |
|-----------------------|---|
| Operating temperature | 0°C to 40°C (32°F to 104°F) |
| Storage temperature | -40°C to 65°C (-40°F to 149°F) |
| Operating humidity | 90% maximum relative humidity, non-condensing |
| Storage humidity | 95% maximum relative humidity, non-condensing |

Troubleshooting

Problems

Mouse is not functioning as intended

Possible solution

- Turn ON the power switch at the bottom of the mouse and try again.
- 1. In wireless mode, ensure that the battery has sufficient battery power.
- 2. Slide the power button to turn off the mouse and then turn on again.
- 3. In wired mode, connect the USB charging cable to another USB port. Wait until a notification appears indicating that the driver installation is complete before you use the mouse.
- 4. In 2.4GHz wireless mode, connect the Type-C dongle to another USB port, or connect the Type-C dongle and USB charging cable to the extender. Refer to **Setting up the mouse** for detailed setup instructions. Wait until a notification appears indicating that the driver installation is complete before you use the mouse.
- 5. Restart the computer.

Mouse is not running based on the configuration selected in the **Alienware Command Center (AWCC)** application.

1. 1. Open the **Alienware Command Center (AWCC)** application and ensure that the selected configuration is set up and saved.

Problems

Resolving cursor issue

Possible solution

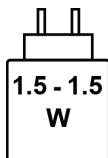
- Turn ON the power switch on the bottom of the mouse and try again.
- 1. In wired mode, connect the USB charging cable to another USB port. Wait until a notification appears indicating that the driver installation is complete before you use the mouse.
- 2. In 2.4GHz wireless mode, connect the Type-C dongle to another USB port or connect the Type-C dongle and USB charging cable to the extender. Wait until a notification appears indicating that the driver installation is complete before you use the mouse.
- 3. Ensure that the sensor is not obstructed or dirty.
- 4. Glass or very smooth glossy surfaces are not suitable for the mouse sensor to capture movement. Using a dark colored fabric mouse pad can improve the tracking.
- 5. Save any data, close any open programs, and then restart the laptop or desktop. When you do not have another mouse or touchscreen, hold the power button down for at least 15 seconds to turn the desktop off. All unsaved data will be lost.

Charging power requirement

 **NOTE:** The information in this section is applicable only to the European Union (EU) countries.

Charging power requirement

The power delivered by the charger must be between minimum 1.5 W required by the radio equipment, and maximum 1.5 W in order to achieve the maximum charging speed.



Изискване за мощност на зареждане:

Мощността, осигурявана от зарядното устройство, трябва да е между минимум 1.5 W, изисквана от радиооборудването, и максимум 1.5 W, за да се постигне максимална скорост на зареждане.

Požadavek na nabíjecí výkon:

Aby bylo dosaženo maximální rychlosti nabíjení, musí být výkon dodávaný nabíječkou mezi minimem 1.5 W požadovaným rádiovým zařízením a maximem 1.5 W.

Strømkrav til opladning:

Den effekt, der leveres af opladeren, skal være mellem de minimale 1.5 W, der kræves af radioudstyret, og maksimaleffekten på 1.5 W for at opnå den maksimale opladningshastighed.

Charging power requirement:

The power delivered by the charger must be between minimum 1.5 W required by the radio equipment, and maximum 1.5 W in order to achieve the maximum charging speed.

Laadimisvõimsuse nõue:

maksimaalse laadimiskiiruse saavutamiseks peab laadija tarnitav võimsus jääma raadioseadmete nõutava minimaalse võimsuse 1.5 W ja maksimaalse võimsuse 1.5 W vahele.

Lataustehovaatimus:

Laturin tuottaman tehon on oltava radiolaitteen vaatiman minimin 1.5 W ja maksimin 1.5 W välillä maksimilatausnopeuden saavuttamiseksi.

Puissance requise pour le chargement :

L'alimentation fournie par le chargeur doit être comprise entre la puissance minimale requise par l'équipement radio (1.5 W) et la puissance maximale autorisée (1.5 W) afin d'atteindre la vitesse maximale de chargement.

Ladeanforderungen:

Die vom Ladegerät bereitgestellte Leistung muss zwischen mindestens 1.5 W für die Funkgeräte und maximal 1.5 W liegen, um die maximale Ladegeschwindigkeit zu erreichen.

Απαίτηση ισχύος φόρτισης:

Η ισχύς που παρέχει ο φορτιστής πρέπει να κυμαίνεται μεταξύ των ελάχιστων 1.5 W που απαιτούνται από τον ραδιοεξοπλισμού και των μέγιστων 1.5 W, προκειμένου να επιτευχθεί η μέγιστη ταχύτητα φόρτισης.

Töltési teljesítményigény:

A maximális töltési sebesség eléréséhez a töltő által leadott teljesítménynek a rádióberendezés által megkövetelt minimális 1.5 W és a maximális 1.5 W között kell lennie.

Requisiti di alimentazione per la ricarica:

L'alimentazione fornita dal caricabatterie deve essere compresa tra i 1.5 W minimi richiesti dall'apparecchiatura radio e i 1.5 W massimi, al fine di raggiungere la velocità di ricarica massima.

Uzlādes jaudas prasība.

Lādētāja nodrošinātajai jaudai jābūt no min. 1.5 W, kas nepieciešama radio aprīkojumam, un maks. 1.5 W, lai sasniegtu maksimālo uzlādes ātrumu.

Ķkrovimo galios reikalavimai.

Kad bŭtŭ pasiektas didŭiausias ŭkrovimo greitis, ŭkroviklio galia pagal radijo ŭrangos reikalavimus turi bŭti ne maŭesnŭ kaip 1.5 W ir ne didesnŭ kaip 1.5 W.

Rekwizit dwar il-potenza tal-iċċarġjar:

Il-potenza pprovduta miċ-ċarġer trid tkun bejn il-minimu ta' 1.5 W meħtieġ mit-tagħmir tar-radju tiegħek, u l-massimu ta' 1.5 W biex tinkiseb il-veloċità massima tal-iċċarġjar.

Vereiste oplaadstroom:

De stroom die door de oplader wordt geleverd, moet tussen minimaal 1.5 W, vereist door de radioapparatuur, en maximaal 1.5 W zijn om de maximale oplaadsnelheid te bereiken.

Wymaganie dotyczące zasilania:

Zasilanie dostarczane przez ładowarkę musi znajdować się w zakresie od wartości minimalnej 1.5 W wymaganej przez urządzenie radiowe po wartość maksymalną 1.5 W zapewniającą ładowanie z maksymalną szybkością.

Requisito de potência de carregamento:

A potência fornecida pelo carregador deve situar-se entre o mínimo de 1.5 W exigido pelo equipamento de rádio e o máximo de 1.5 W, a fim de atingir a velocidade máxima de carregamento.

Cerinŭă de alimentare pentru ŭncărcare:

Alimentarea furnizată de ŭncărcător trebuie să fie ŭntre minimum 1.5 W, valoare impusă de echipamentul radio, ŭi maximum 1.5 W pentru a obŭține viteza maximă de ŭncărcare.

Požiadavky na napájanie:

Na dosiahnutie maximálnej rýchlosti nabíjania musí byť výkon dodávaný nabíjačkou medzi minimom 1.5 W požadovaným rádiovým zariadením a maximom 1.5 W.

Zahteve glede moči napajanja:

Za najhitrejšie polnjenje mora napajalnik dovajati moč med najmanj 1.5 W (kar zahteva radijska oprema) in največ 1.5 W.

Requisito de carga:

La potencia suministrada a través del cargador debe de ser de entre 1.5 W y 1.5 W para obtener la velocidad de carga máxima en equipos de radio.

Strömförsörjningskrav för laddning:

Den ström som levereras av laddaren måste vara mellan minst 1.5 W och högst 1.5 W enligt radioutrustningens krav för att uppnå maximal laddningshastighet.

Требования к мощности для зарядки:

Зарядное устройство должно подавать мощность в диапазоне от 1.5 Вт, согласно минимальному требованию для радиооборудования, до 1.5 Вт для достижения максимальной скорости зарядки.

Statutory information

Warranty

Limited warranty and return policies

Alienware-branded products carry a two-year limited hardware warranty. If purchased together with a Dell computer, it will follow the computer warranty.

For U.S. customers:

This purchase and your use of this product are subject to Dell's end user agreement, which you can find at [**www.dell.com/terms**](http://www.dell.com/terms). This document contains a binding arbitration clause.

For European, Middle Eastern, and African customers:

Alienware-branded products that are sold and used are subject to applicable national consumer legal rights, the terms of any retailer sale agreement that you have entered into (which will apply between you and the retailer) and Dell's end user contract terms. Dell may also provide an additional hardware warranty—full details of the Dell end user contract and warranty terms can be found by going to [**www.dell.com**](http://www.dell.com), selecting your country from the list at the bottom of the "home" page and then clicking the "terms and conditions" link for the end user terms or the "support" link for the warranty terms.

For non-U.S. customers:

Alienware-branded products that are sold and used are subject to applicable national consumer legal rights, the terms of any retailer sale agreement that you have entered into (which will apply between you and the retailer) and Dell's warranty terms. Dell may also provide an additional hardware warranty—full details of Dell's warranty terms can be found by going to [**www.dell.com/terms**](http://www.dell.com/terms), selecting your country from the list at the bottom of the "home" page and then clicking the "terms and conditions" link or the "support" link for the warranty terms.