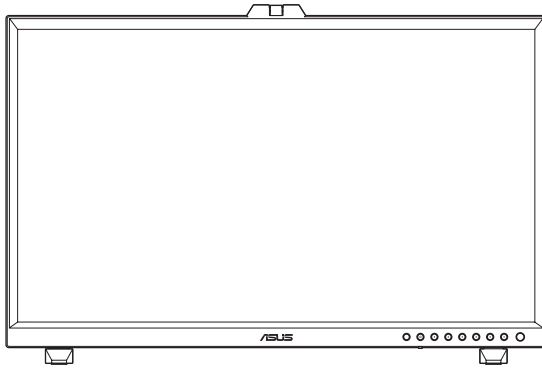


ASUS[®]

HA3281A

OLED Monitor

User Guide



HDMI[™]
HIGH-DEFINITION MULTIMEDIA INTERFACE

First Edition
December 2023

Copyright © 2023 ASUSTeK COMPUTER INC. All Rights Reserved.

No part of this manual, including the products and software described in it, may be reproduced, transmitted, transcribed, stored in a retrieval system, or translated into any language in any form or by any means, except documentation kept by the purchaser for backup purposes, without the express written permission of ASUSTeK COMPUTER INC. ("ASUS").

Product warranty or service will not be extended if: (1) the product is repaired, modified or altered, unless such repair, modification or alteration is authorized in writing by ASUS; or (2) the serial number of the product is defaced or missing.

ASUS PROVIDES THIS MANUAL "AS IS" WITHOUT WARRANTY OF ANY KIND, EITHER EXPRESS OR IMPLIED, INCLUDING BUT NOT LIMITED TO THE IMPLIED WARRANTIES OR CONDITIONS OF MERCHANTABILITY OR FITNESS FOR A PARTICULAR PURPOSE. IN NO EVENT SHALL ASUS, ITS DIRECTORS, OFFICERS, EMPLOYEES OR AGENTS BE LIABLE FOR ANY INDIRECT, SPECIAL, INCIDENTAL, OR CONSEQUENTIAL DAMAGES (INCLUDING DAMAGES FOR LOSS OF PROFITS, LOSS OF BUSINESS, LOSS OF USE OR DATA, INTERRUPTION OF BUSINESS AND THE LIKE), EVEN IF ASUS HAS BEEN ADVISED OF THE POSSIBILITY OF SUCH DAMAGES ARISING FROM ANY DEFECT OR ERROR IN THIS MANUAL OR PRODUCT.

SPECIFICATIONS AND INFORMATION CONTAINED IN THIS MANUAL ARE FURNISHED FOR INFORMATIONAL USE ONLY, AND ARE SUBJECT TO CHANGE AT ANY TIME WITHOUT NOTICE, AND SHOULD NOT BE CONSTRUED AS A COMMITMENT BY ASUS. ASUS ASSUMES NO RESPONSIBILITY OR LIABILITY FOR ANY ERRORS OR INACCURACIES THAT MAY APPEAR IN THIS MANUAL, INCLUDING THE PRODUCTS AND SOFTWARE DESCRIBED IN IT.

Products and corporate names appearing in this manual may or may not be registered trademarks or copyrights of their respective companies, and are used only for identification or explanation and to the owners' benefit, without intent to infringe.

Contents

Notices.....	iv
Safety information	v
Care and Cleaning	vi
Disposing of your old product	vii
ASUS contact information	vii
Takeback services.....	viii
Product information for EU energy label.....	viii
Chapter 1: Product introduction	
1.1 Welcome!	1-1
1.2 Package contents.....	1-1
1.3 Monitor introduction	1-2
1.3.1 Front view	1-2
1.3.2 Back view.....	1-4
1.3.3 Color Calibration	1-5
Chapter 2: Setup	
2.1 Adjusting the mini stands	2-1
2.2 Attaching the stand (arm/base)	2-2
2.3 Detaching the stand (for VESA wall mount).....	2-4
2.4 Installing the cable clips.....	2-6
2.5 Adjusting the monitor.....	2-7
2.6 Connecting the cables.....	2-9
2.7 Turning on/off the monitor	2-10
Chapter 3: General instructions	
3.1 OSD (On-Screen Display) menu	3-1
3.1.1 How to reconfigure.....	3-1
3.1.2 OSD function introduction.....	3-2
3.2 Troubleshooting (FAQ).....	3-17
3.3 Supported operating modes	3-18
Chapter 4: Specifications summary	
4.1 Display	4-1
4.2 Power	4-3
Chapter 5: Dimension	

Notices

Federal Communications Commission Statement

This device complies with Part 15 of the FCC Rules. Operation is subject to the following two conditions:

- This device may not cause harmful interference, and
- This device must accept any interference received including interference that may cause undesired operation.

This equipment has been tested and found to comply with the limits for a Class B digital device, pursuant to Part 15 of the FCC Rules. These limits are designed to provide reasonable protection against harmful interference in a residential installation. This equipment generates, uses and can radiate radio frequency energy and, if not installed and used in accordance with manufacturer's instructions, may cause harmful interference to radio communications. However, there is no guarantee that interference will not occur in a particular installation. If this equipment does cause harmful interference to radio or television reception, which can be determined by turning the equipment off and on, the user is encouraged to try to correct the interference by one or more of the following measures:

- Reorient or relocate the receiving antenna.
- Increase the separation between the equipment and receiver.
- Connect the equipment to an outlet on a circuit different from that to which the receiver is connected.
- Consult the dealer or an experienced radio/TV technician for help.



The use of shielded cables for connection of the monitor to the graphics card is required to assure compliance with FCC regulations. Changes or modifications to this unit not expressly approved by the party responsible for compliance could void the user's authority to operate this equipment.

Canadian Department of Communications Statement

This digital apparatus does not exceed the Class B limits for radio noise emissions from digital apparatus set out in the Radio Interference Regulations of the Canadian Department of Communications.

This class B digital apparatus complies with Canadian ICES-003.

This Class B digital apparatus meets all requirements of the Canadian Interference - Causing Equipment Regulations.

Cet appareil numérique de la classe B respecte toutes les exigences du Règlement sur le matériel brouiller du Canada.

Safety information

- Before setting up the monitor, carefully read all the documentation that came with the package.
- To prevent fire or shock hazard, never expose the monitor to rain or moisture.
- Never try to open the monitor cabinet. The dangerous high voltages inside the monitor may result in serious physical injury.
- If the power supply is broken, do not try to fix it by yourself. Contact a qualified service technician or your retailer.
- Before using the product, make sure all cables are correctly connected and the power cables are not damaged. If you detect any damage, contact your dealer immediately.
- Slots and openings on the back or top of the cabinet are provided for ventilation. Do not block these slots. Never place this product near or over a radiator or heat source unless proper ventilation is provided.
- The monitor should be operated only from the type of power source indicated on the label. If you are not sure of the type of power supply to your home, consult your dealer or local power company.
- Use the appropriate power plug which complies with your local power standard.
- Do not overload power strips and extension cords. Overloading can result in fire or electric shock.
- Avoid dust, humidity, and temperature extremes. Do not place the monitor in any area where it may become wet. Place the monitor on a stable surface.
- Unplug the unit during a lightning storm or if it will not be used for a long period of time. This will protect the monitor from damage due to power surges.
- Never push objects or spill liquid of any kind into the slots on the monitor cabinet.
- To ensure satisfactory operation, use the monitor only with UL listed computers which have appropriate configured receptacles marked between 100-240V AC.
- If you encounter technical problems with the monitor, contact a qualified service technician or your retailer.
- Adjustment of the volume control as well as the equalizer to other settings than the center position may increase the ear-/headphones output voltage and therefore the sound pressure level.



This symbol of the crossed out wheeled bin indicates that the product (electrical, electronic equipment, and mercury-containing button cell battery) should not be placed in municipal waste. Please check local regulations for disposal of electronic products.

AEEE yönetmeliğine uygundur

Care and Cleaning

- The OLED Display does not require any scheduled maintenance activities. In any case of doubts, contact the ASUSTeK Computer Inc.
- Before you lift or reposition your monitor, it is better to disconnect the cables and power cord. Follow the correct lifting techniques when positioning the monitor. When lifting or carrying the monitor, grasp the edges of the monitor.
- Do not lift the display by the stand or the cord.
- Cleaning: Turn your monitor off and unplug the power cord. Clean the monitor surface with a dry soft cloth or soft tissue, to clean the unit.
- Avoid using a cleaner containing alcohol or acetone. Never spray cleaner directly on the screen, as it may drip inside the monitor and cause an electric shock.

The following symptoms are normal with the monitor:

- You may find slightly uneven brightness on the screen depending on the desktop pattern you use.
- When the same image is displayed for hours, an afterimage of the previous screen may remain after switching the image. The screen will recover slowly or you can turn off the Power Switch for hours.
- When the screen becomes black or flashes, or cannot work anymore, contact your dealer or service center to fix it. Do not repair the screen by yourself!

Disposing of your old product

- Within the European Union



EU-wide legislation, as implemented in each Member State, requires that waste electrical and electronic products carrying the mark (left) must be disposed of separately from normal household waste. This includes monitors and electrical accessories, such as signal cables or power cords. When you need to dispose of your display products, please follow the guidance of your local authority, or ask the shop where you purchased the product, or if applicable, follow any agreements made between yourself.

The mark on electrical and electronic products only applies to the current European Union Member States.

- Outside the European Union
If you wish to dispose of used electrical and electronic products outside the European Union, please contact your local authority so as to comply with the correct disposal method.
- Please follow the national guidelines for electronic product disposal.

ASUS contact information

■ ASUS CONTACT INFORMATION		
■ ASUSTeK Computer Inc.	■ ASUS Computer International (America)	■ ASUS Computer GmbH (Germany and Austria)
Address 1F., NO.15, LIDE RD., BEITOU DIST., TAIPEI CITY, TAIWAN	Address 48720 Kato Rd, Fremont, CA 94538, USA	Address Harkortstr. 21-23 D-40880 Ratingen, Germany
Telephone +886-2-2894-3447	Telephone +1-510-739-3777	Telephone +49-1805-01 0920
Fax +886-2-2894-7798	Fax +1-510-608-4555	Website http://www.asus.de/
E-mail info@asus.com.tw	Website http://usa.asus.com/	Online Contact http://www.asus.de/sales
Website http://www.asus.com.tw/		
■ Technical Support	■ Technical Support	■ Technical Support
Telephone +886-2-7736-0456	Telephone +1-812-282-2787 (English Only)	Telephone +49-2102-5789557
	+1-905-370-2787 (French Only)	Support Fax +49-2102-959911
	Online Support http://support.asus.com/	Online Support http://support.asus.com/

Where to find more information

Refer to the following sources for additional information and for product and software updates.

1. ASUS websites

The ASUS websites worldwide provide updated information on ASUS hardware and software products. Refer to <http://www.asus.com>

2. Optional documentation

Your product package may include optional documentation that may have been added by your dealer. These documents are not part of the standard package.

Takeback services

ASUS recycling and takeback programs come from our commitment to the highest standards for protecting our environment. We believe in providing solutions for our customers to be able to responsibly recycle our products, batteries and other components as well as the packaging materials.

Please go to <http://csr.asus.com/english/Takeback.htm> for detail recycling information in different region.

Product information for EU energy label



Chapter 1: Product introduction

1.1 Welcome!

Thank you for purchasing the ASUS® OLED monitor!

The latest widescreen OLED monitor from ASUS provides a crisper, broader, and brighter display, plus a host of features that enhance your viewing experience.

With these features, you can enjoy the convenience and delightful visual experience that the monitor brings to you!

1.2 Package contents

Check your package for the following items:

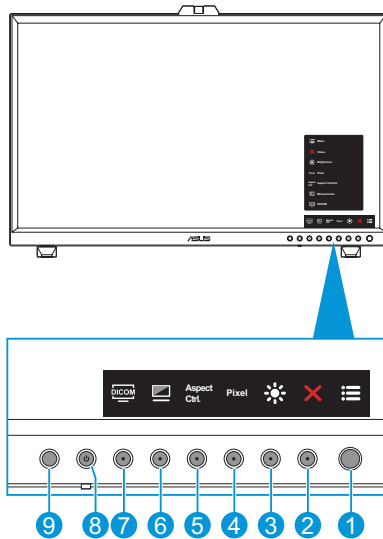
- ✓ OLED monitor
- ✓ Stand
- ✓ Cable clips
- ✓ Power adapter
- ✓ Quick start guide
- ✓ Power cord
- ✓ HDMI cable
- ✓ DisplayPort cable
- ✓ USB Type-C cable
- ✓ USB Type-C to Type-A cable
- ✓ Warranty card











If any of the above items is damaged or missing, contact your retailer immediately.

1.3 Monitor introduction

1.3.1 Front view



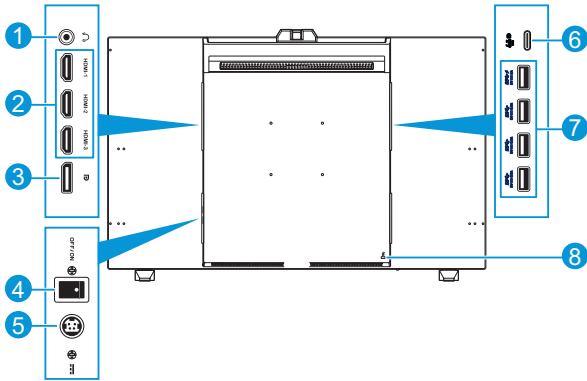
1.  Menu (5-way) button:
 - Enter the OSD menu.
 - Enact the selected OSD menu items.
 - Increase/Decrease values or move your selection up/down/left/right.
2.  Close button:
 - Exit the OSD menu.
 - Toggle the Key Lock function between on and off with a long press for 5 seconds.
3.  Shortcut 2
 - Default: Brightness
 - To change the hotkey function, go to the Shortcut > Shortcut 2 menu.
4.  Shortcut 1
 - Default: Pixel
 - To change the hotkey function, go to the Shortcut > Shortcut 1 menu.

5.  Aspect Control Button:
 - Configure the aspect ratio setting.
6.  Monochrome Button:
 - Configure the monochrome setting.
7.  DICOM Button:
 - Configure the DICOM setting.
8.  Stand-by Button/Stand-by Indicator:
 - Turn the monitor on/off.
 - The color definition of the Stand-by indicator is as the below table.

Status	Description
White	ON
Amber	Standby mode
OFF	OFF

9. Human sensor
 - Detects user's presence in front of the monitor screen. The monitor automatically enters standby mode when no moving object in front of the monitor is detected for longer than 60 seconds. When the user comes back, the power resumes automatically when it detects the user's presence. The default setting of Human sensor is "Off". User can activate this function through OSD settings.
 - To configure the setting, go to the Setting > Human Sensor menu.

1.3.2 Back view



1. **Earphone jack:** This port connects to an earphone.
2. **HDMI ports:** These ports are for connection with an HDMI compatible device.
3. **DisplayPort in:** This port is for connection with a DisplayPort compatible device.



The default setting of DisplayPort Stream in the OSD menu is DisplayPort 1.2. To configure the setting, go to Setting > DisplayPort Stream menu.

4. **DC switch:** Press the switch to turn on/off power.
5. **DC-IN port:** This port connects the AC/DC adapter.
6. **USB 3.2 Type-C:** This port is for connection with a DisplayPort/USB Type-C compatible device. This port is also for connection with a USB upstream cable, which supports USB power and data delivery.



This monitor is Super-Speed USB 3.2 Gen 2 compatible (10 Gbps). The port offers 5V/3A power delivery.

7. **USB 3.2 Gen 2 Type-A (SuperSpeed USB 10Gbps):** These ports are for connection with USB devices, such as USB keyboard/mouse, USB flash drive, etc.



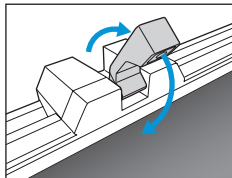
- The top USB port supports BC 1.2.
- The bottom USB port supports FW upgrade.
- Type A*4, the power output rating from UP TO DOWN:
 - The First of Type A*1: 5Vdc, 2A
 - The Second of Type A*1: 5Vdc, 0.9A
 - The Third of Type A*1: 5Vdc, 0.9A
 - The Last of Type A*1: 5Vdc, 0.9A.

8. **Kensington lock slot:** This port connects a lock-and-cable apparatus for security purposes.

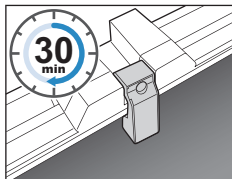
1.3.3 Color Calibration

Users can use the ASUS tool with the color sensor that is embedded on the top of the monitor for color calibration. Ensure that the protective film on the color sensor has been removed before using the color sensor for calibration.

1. Open the ASUS tool to activate the color sensor to perform the color calibration.
The color sensor starts moving from its original position towards the screen.



2. When the color sensor reaches the edge of the screen, it will stop and start the calibration process. The calibration time depends on the amount of preset modes you select, the longest time might be 30 minutes.



3. After the calibration process is completed, the color sensor will automatically return to its original position.



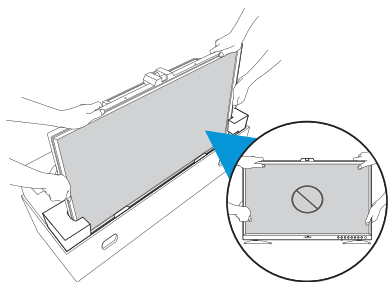
- When the device is turned on, the color sensor will return to its original position and produce a sound while the motor is running during the initialization process. This is a normal.
- Avoid pulling the color sensor to prevent damage.
- To ensure ASUS tool to perform the calibration smoothly, do not touch the color sensor with your hands and there are no interfering objects during the process.

Chapter 2: Setup

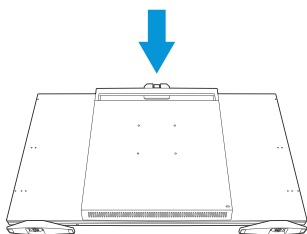
2.1 Adjusting the mini stands

To adjust the mini stands:

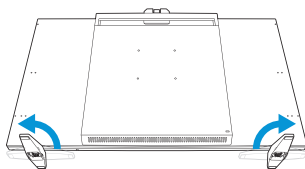
1. Carefully take the monitor out of the box. Hold the monitor firmly and do not press on the panel screen when lifting to avoid any accidental damage (Figure 1).
2. Have the front of the monitor face down on a table (Figure 2).
3. Rotate the mini stands by 90 degrees away from the bottom of the monitor (Figure 3).



(Figure 1)




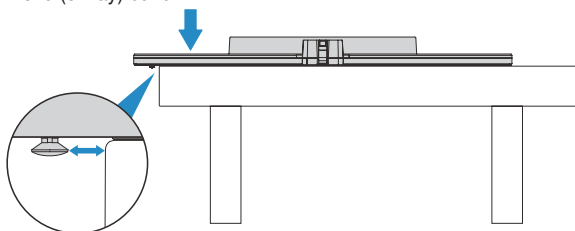
(Figure 2)



(Figure 3)



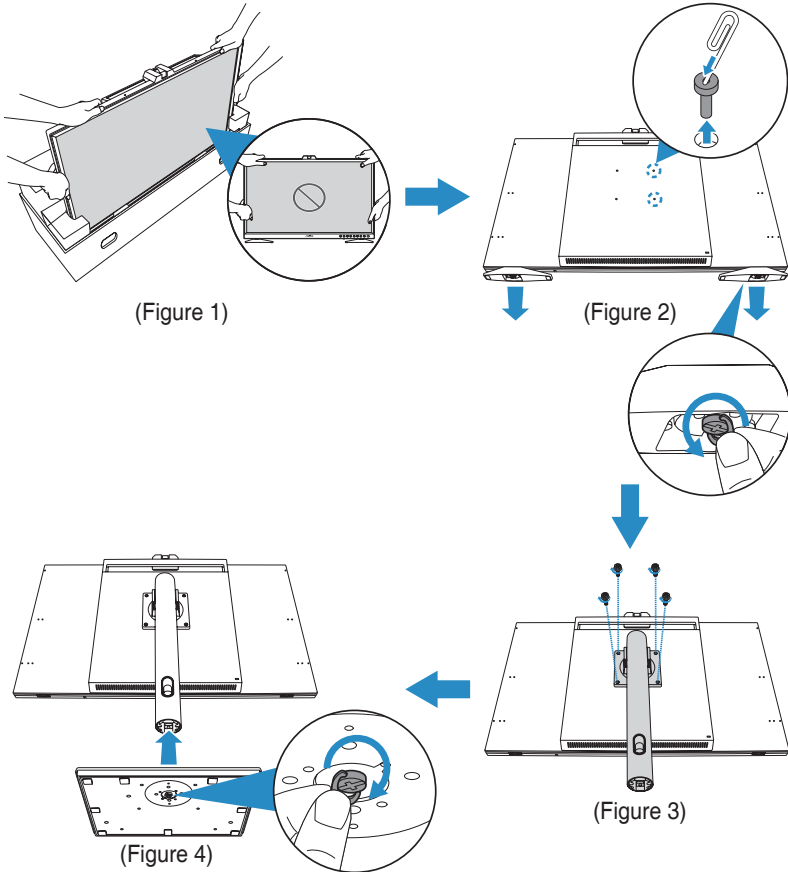
- We recommend that you cover the table surface with soft cloth to prevent damage to the monitor.
- When the panel screen is facing down, be careful not to damage the  Menu (5-way) button.




2.2 Attaching the stand (arm/base)

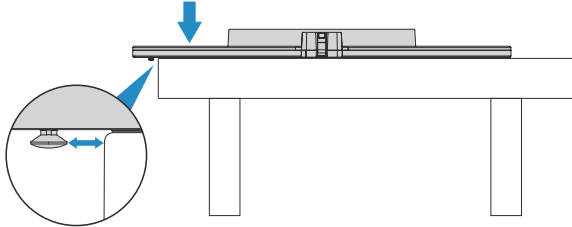
To assemble the stand:

1. Carefully take the monitor out of the box. Hold the monitor firmly and do not press on the panel screen when lifting to avoid any accidental damage (Figure 1).
2. Place the monitor face down on the table, and then use a paper clip (or a similar object) to remove the rubber cushions in the screw holes and remove the mini stands (Figure 2).
3. Install the arm and secure it using the screws (Figure 3).
4. Install the base to the arm. Then lift the screw ring and turn it clockwise to secure the base in place (Figure 4).





- It is recommended that the user removes the mini stands, in order to avoid affecting the lifting action of the big stands due to the additional installation of other accessories (such as the mini stands).
- We recommend that you cover the table surface with soft cloth to prevent damage to the monitor.
- When the panel screen is facing down, be careful not to damage the  Menu (5-way) button.



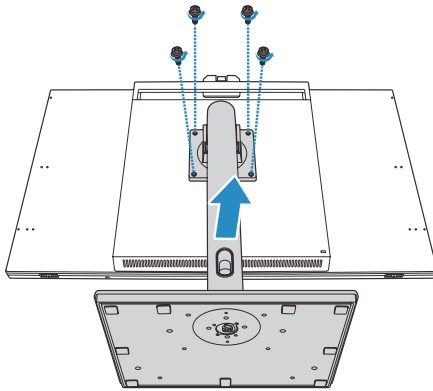
Shall use VESA standardized mounting pad in mounting application.

2.3 Detaching the stand (for VESA wall mount)

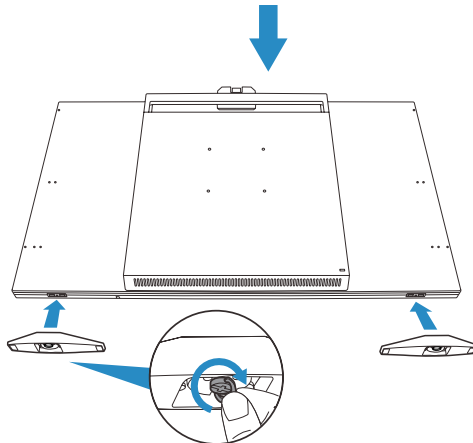
The detachable stand of this monitor is specially designed for VESA wall mount.

To detach the stand:

1. Place the monitor face down on the table, remove the screws that fix the arm to the monitor, and then remove the arm (Figure 1).
2. Install the mini stands (Figure 2).




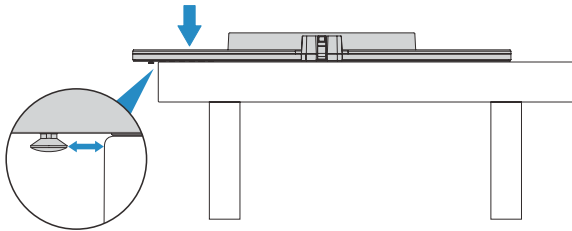
(Figure 1)



(Figure 2)



- We recommend that you cover the table surface with soft cloth to prevent damage to the monitor.
- When the panel screen is facing down, be careful not to damage the  Menu (5-way) button.



- The VESA wall mount kit (100 x 100 mm) is purchased separately.
- Use only the UL Listed Wall Mount Bracket (Screw size: M4 x 12 mm; Screw quantity: 4pcs).

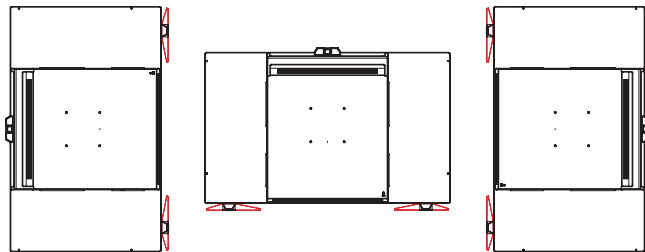
Use for the product is landscape mode only, no flat direction mode.



Use suitable mounting equipment to avoid risk of injury.



- Unit is only allowed to be used in the below three directions (top openings upwards, top openings facing sideways and no flat direction). Otherwise, it would be a failure of fire enclosure and could result in fire hazard.
- No adjustable VESA arm type wall mount device to be permitted for product installation. (The color calibration sensor always oriented on top or sides of the screen)



2.4 Installing the cable clips

Use the cable clips to manage the connected cables.

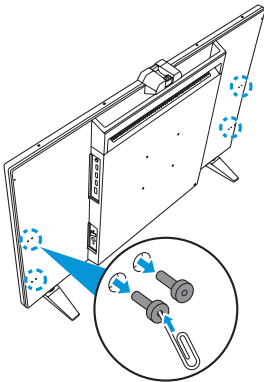
To install the cable clips:

1. Using a paperclip (or similar item), remove the rubbers covering the screw holes (Figure 1).
2. By aligning the screw hole (marked by blue line) and the guide pin (marked by the pink line) of the cable clip with the screw holes, install the clip to its designated location on the rear of the monitor. Then secure the cable clip with the screw (Figure 2).

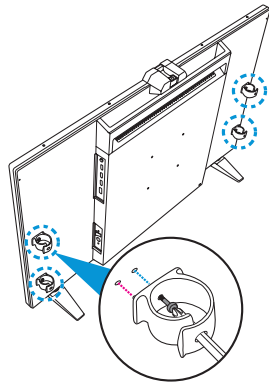


- Make sure the guide pin is installed into the screw hole closer to the edge of the monitor.
- The cable clip is divided into two sides (left and right).

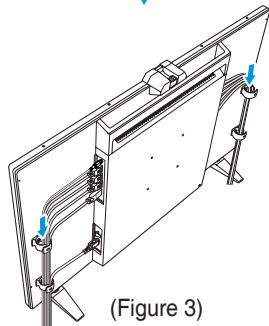
3. Route the connected cables through the installed cable clips (Figure 3).



(Figure 1)



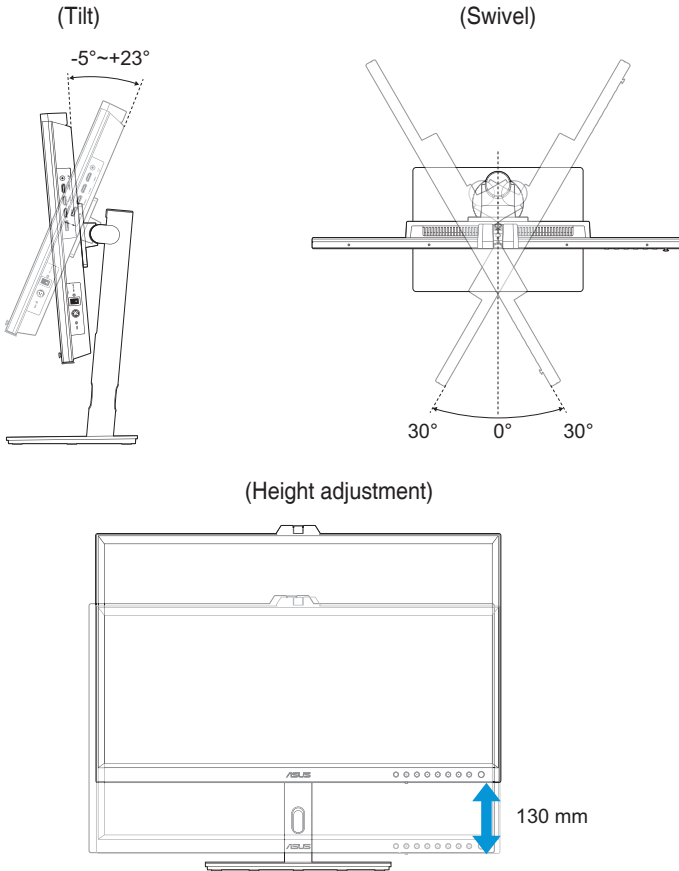
(Figure 2)



(Figure 3)

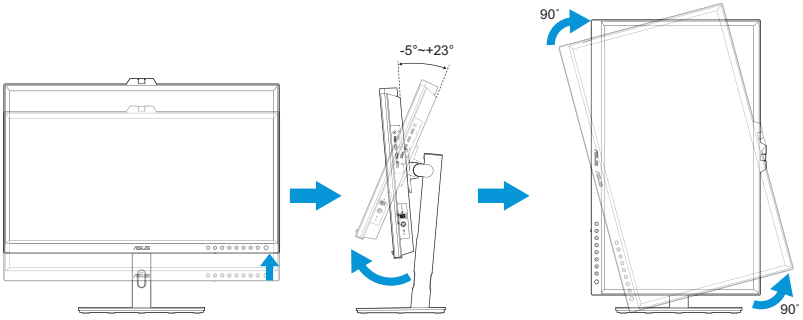
2.5 Adjusting the monitor

- For optimal viewing, we recommend that you look at the full face of the monitor, then adjust the monitor to the angle that is most comfortable for you.
- Hold the stand to prevent the monitor from falling when you change its angle.
- You can adjust the monitor's angle from -5° ~ $+23^{\circ}$, and it allows 30° swivel adjustment from either left or right. You can also adjust the monitor's height within 130 mm.



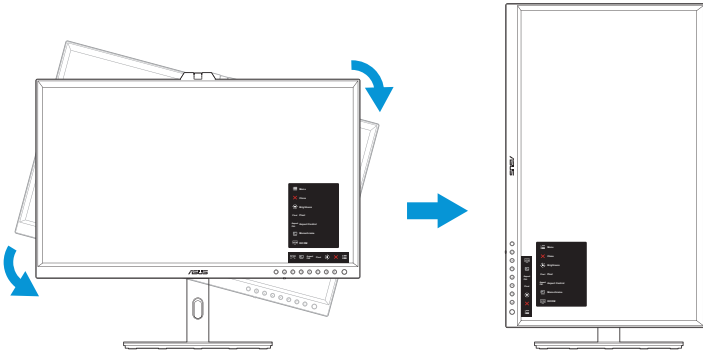
Pivoting the monitor

1. Lift the monitor to the highest position.
2. Tilt the monitor to its maximum angle.
3. Pivot the monitor to the angle you need.



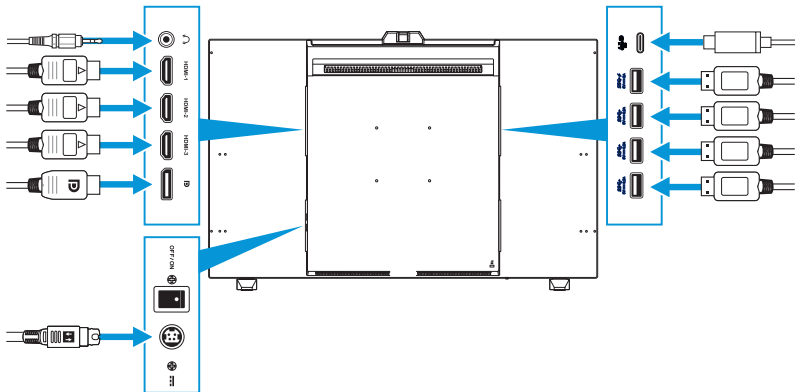
It is normal that the monitor slightly shakes while you adjust the viewing angle.

4. The OSD menu item will automatically rotate when the monitor rotates.



2.6 Connecting the cables

Connect the cables according to the following instructions:



- **To connect the power cord:** Connect one end of the power cord securely to the monitor's DC input port, the other end to a power adapter. Then connect the power adapter to a power outlet.
- **To connect the HDMI/DisplayPort/USB Type-C/USB Type-A cable:**
 - a. Plug one end of the HDMI/DisplayPort/USB Type-C/USB Type-A cable to the monitor's HDMI/DisplayPort/USB Type-C/USB Type-A jack.
 - b. Connect the other end of the HDMI/DisplayPort/USB Type-C* cable to your device's HDMI/DisplayPort/USB Type-C jack.




It is suggested to use USB certified Type-C 4K/ support 3A (or up to 3A) cable. If the signal source supports DP Alt mode, all video, audio and data signal can be transmitted.

- **To use the earphone:** Connect the end with plug type to the monitor's earphone jack when an HDMI/DisplayPort/USB Type-C signal is fed.
- **To use the USB upstream/downstream function:**
 - » Upstream: Use an USB Type-C cable and plug on end of the Type-C connector to the monitor's USB 3.2 Type-C port as upstream and the other end to your computer's USB Type-C port. Or use an USB Type-C to Type-A cable, plug the Type-C connector to the the monitor's USB 3.2 Type-C port as upstream and the Type-A connector to your computer's USB Type-A port. Make sure your computer is installed with the latest Windows 10/11 operating system. That will enable the USB ports on the monitor to work.
 - » Downstream: Use an USB cable to connect your device with the monitor's USB Type-A port.




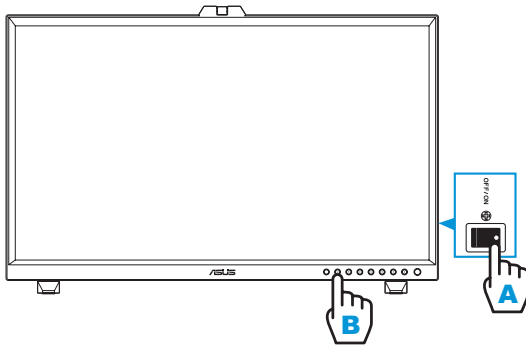
When these cables are connected, you can choose the desired signal from the Input Select item in the OSD menu.

2.7 Turning on/off the monitor

Set the DC switch to ON position (A), and then press the  button (B). The Stand-by indicator lights up in white to show that the monitor is ON.

Safely shutdown the monitor:

Press the  button (B) turn off the screen, and then set the DC switch to OFF position (A) to fully turn off the monitor.



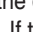
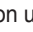







Chapter 3: General instructions

3.1 OSD (On-Screen Display) menu

3.1.1 How to reconfigure



1. Press the  Menu (5-way) button to activate the OSD menu.
2. Move the  Menu (5-way) button right to navigate through the functions. Highlight the desired function and press the  Menu (5-way) button to activate it. If the function selected has a sub-menu, move the  Menu (5-way) button up/down to navigate through the sub-menu functions. Highlight the desired sub-menu function and press the  Menu (5-way) button or move the  Menu (5-way) button to activate it.
3. Move the  Menu (5-way) button up/down to change the settings of the selected function.
4. To exit and save the OSD menu, press the  Close button or move the  Menu (5-way) button left repeatedly until the OSD menu disappears. To adjust other functions, repeat steps 1-3.

3.1.2 OSD function introduction

1. Mode

This function contains 8 sub-functions you can select for your preference. Each mode has the Reset selection, allowing you to maintain your setting or return to the preset mode.



- **Native Mode:** Best choice for document editing.
- **sRGB Mode:** Compatible with sRGB color space, sRGB is the best choice for web browsing.
- **DICOM_0lux/DICOM_50lux/DICOM_100lux/DICOM_Auto:** Compliant with DICOM standard, best choice for medical image checking. Select the most suitable mode according to the brightness of the ambient light.
- **User Mode 1/User Mode 2:** You can save one or two ASUS Calibration profiles as User Mode 1/User Mode 2 after executing ASUS Calibration and then have quick access here.



Please apply the following settings while performing ASUS color calibration:

- Set output dynamic to full range.
 - Set output color format to RGB.
 - Set output color depth to 10 bit.
-

Below tables show the default configurations for each ASUS Preset mode:

Function	Native	sRGB	DICOM_0lux	DICOM_50lux
Color Temp.	6500K	Fixed (6500K)	7500K	7500K
Brightness	50	fixed 80nits	100	100
Contrast	80	80	Disable (Gray out)	Disable (Gray out)
Sharpness	Enable (0)	Enable (0)	Enable (0)	Enable (0)
RGB Tuning	Enable (default)	Fixed	Enable (default)	Enable (default)
Monochrome	Enable (default)	Enable (default)	Enable (default)	Enable (default)
Darkness	Enable (default)	Enable (default)	Enable (default)	Enable (default)
Gamma	Enable (2.2)	Fixed (2.2)	Disable (Gray out)	Disable (Gray out)
Light Effect	Enable (default off)	Enable (default off)	Disable (Gray out)	Disable (Gray out)

Function	DICOM_100lux	DICOM_Auto	User Mode 1	User Mode 2
Color Temp.	7500K	7500K	6500K	6500K
Brightness	100	100	50	50
Contrast	Disable (Gray out)	Disable (Gray out)	80	80
Sharpness	Enable (0)	Enable (0)	Enable (0)	Enable (0)
RGB Tuning	Enable (default)	Enable (default)	Enable (default)	Enable (default)
Monochrome	Enable (default)	Enable (default)	Enable (default)	Enable (default)
Darkness	Enable (default)	Enable (default)	Enable (default)	Enable (default)
Gamma	Disable (Gray out)	Disable (Gray out)	Fixed (2.2)	Fixed (2.2)
Light Effect	Disable (Gray out)	Always On	Enable (default off)	Enable (default off)

This product complied with ENERGY STAR.

The default as shipped displays configuration and settings are compliance with ENERGY STAR, and are recommended by the ENERGY STAR program for optimal energy savings.

Note: enabling certain optical features and functionalities (e.g., instant-on), may increase energy consumption beyond the limits required for ENERGY STAR certification, as applicable.

2. Image

Set the image related setting from this menu.



- **Brightness:** The adjusting range is from 0 to 100.
- **Contrast:** The adjusting range is from 0 to 100.
- **Color Temp.:** Contains 6 modes including 5000K, 5500K, 6500K, 7500K, 9300K, and 12000K.
- **Gamma:** Allows you to set the color mode to 2.0, 2.2, or 2.4.
- **Sharpness:** The adjusting range is from 0 to 100.
- **RGB Tuning:** Configures the color settings.
 - » Gain: Adjusts the gain levels for the red, green, or blue color.
 - » Offset: Adjusts the black level offset values for the red, green, or blue color.
- **Monochrome:** Simulates the function of developing positive and negative X-ray films to assist users to have positive and negative films in digital files for inspection.
- **Darkness:** Adjusts the initialized 1st signal level of darkest gray level.

3. Screen

Set the screen related setting from this menu.



- **Aspect Control:** Adjusts the aspect ratio to Full, Dot to dot, or 1:1Ratio.



To activate this function, you need to do the following: turn off the PBP mode.

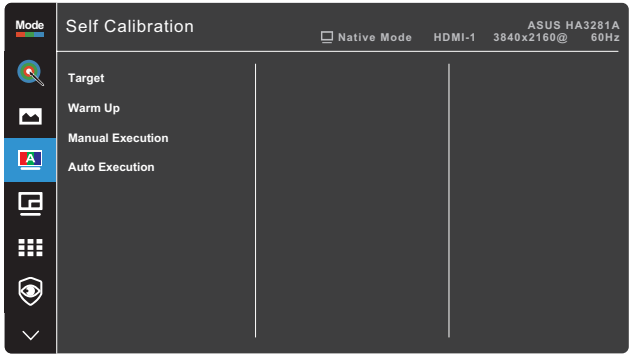
- **Input Range:** Adjusts the input range to Auto, Full, Limit, or SDI Full.
- **Pixel:** Selects the desired display resolution.
 - ⇒ 3MP: Only support 2048 x 1536.
 - ⇒ 5MP: Only support 2560 x 2048.
 - ⇒ 6MP: Only support 3280 x 2048.
 - ⇒ 8MP: 3840 x 2160 (default). Also support 4096x2160 / 1920x2160 / 3M / 6M.

4. Self Calibration

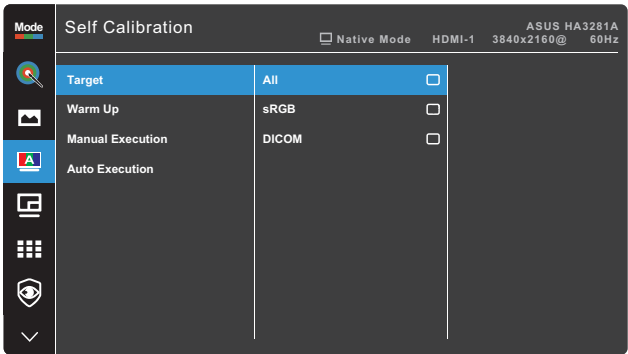
Perform standalone calibration to ensure color accuracy every working period.



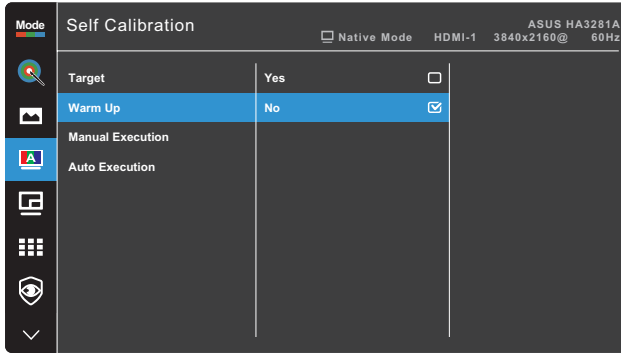
To maintain the accuracy of the schedule, ensure that the DC switch is always set to ON position.



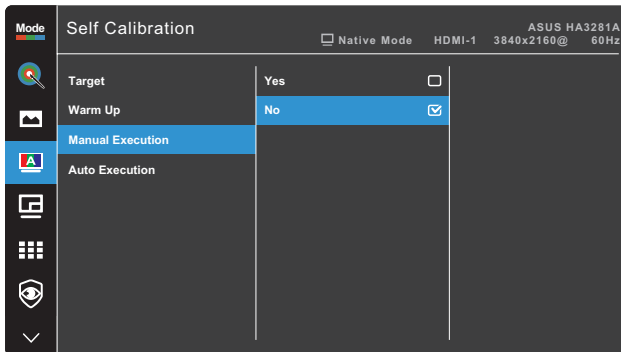
- **Target:** Select the preset modes to be performed standalone calibration. Single or multiple modes are both workable.



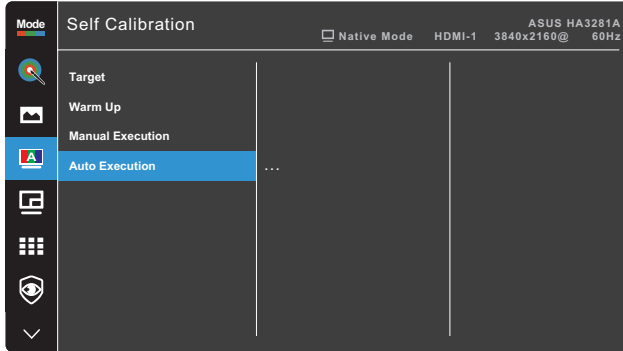
- **Warm Up:** Set whether to warm up for 30 minutes before standalone calibration. (Recommended)



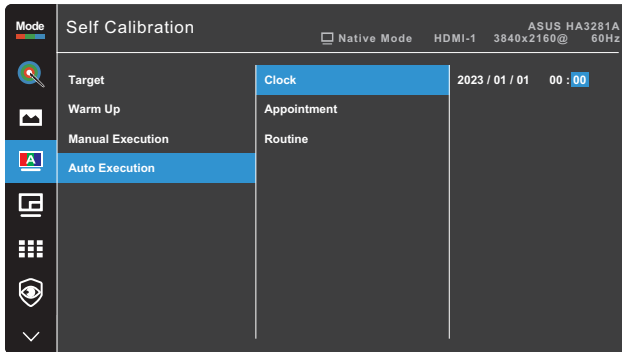
- **Manual Execution:** Manually perform the standalone calibration. Select "Yes" to start.



- **Auto Execution:** Allow the system to automatically perform standalone calibration for your personalized time setup.



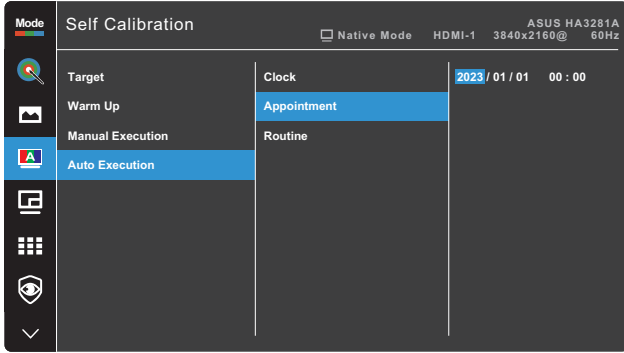
» Clock: Set the current time.



- » Appointment: Set the start time of standalone calibration.



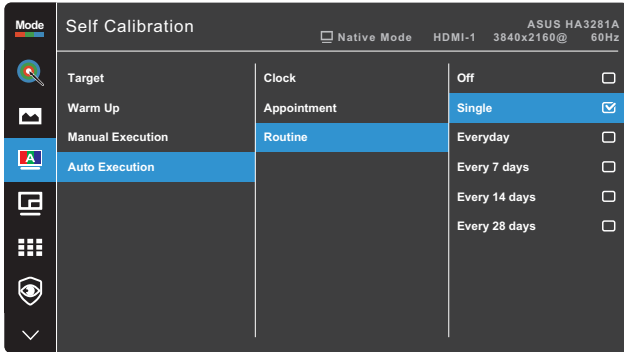
Appointment's setting needs to be later than Clock's.



- » Routine: Set the repeat cycle of standalone calibration.



Auto Execution will be disabled when "Off" is selected.



5. PIP/PBP Setting

The PIP/PBP Setting allows you to open up another sub-window connected from another video source besides the main-window from your original video source. By activating this function, the monitor displays up to 2 pictures from different video sources.



- **PIP/PBP Mode:** Selects PIP or PBP function, or turn it off.
- **PIP/PBP Source:** Selects the video input source between HDMI-1, HDMI-2, HDMI-3, DisplayPort, and USB Type-C. The table below shows the input source combinations.

Sub-window	Main-window				
	HDMI-1	HDMI-2	HDMI-3	DisplayPort	USB Type-C
HDMI-1	Yes	Yes	Yes	Yes	Yes
HDMI-2	Yes	Yes	Yes	Yes	Yes
HDMI-3	Yes	Yes	Yes	Yes	Yes
DisplayPort	Yes	Yes	Yes	Yes	Yes
USB Type-C	Yes	Yes	Yes	Yes	Yes

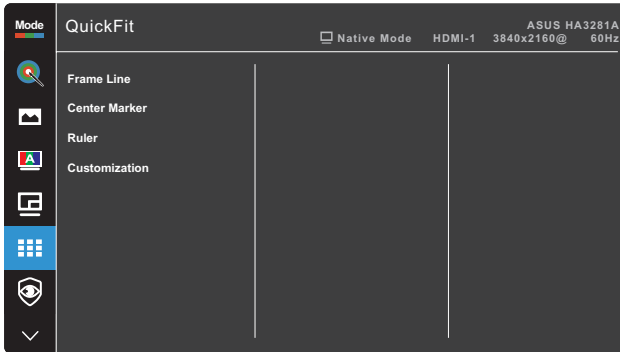
- **Color Setting:** Selects an individual ASUS Preset Mode for the selected PIP/PBP source. (Up to 2 ASUS Preset modes can be chosen)
- **PIP Size:** Adjusts the PIP size to Small, Middle, or Large. (Only available for the PIP mode)



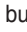
6. QuickFit

Allows users to have a preview of the document or photo layout directly on the screen without printing the test copies.



To activate this function, you need to disable the PIP/PBP mode.



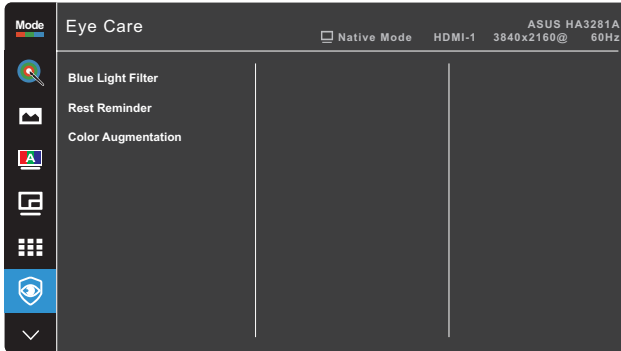
- **Frame Line:** Facilitates designers and users to organize content and layout on one page and achieve a consistent look and feel. The selections are: 1:1 or 3 x 3.
- **Center Marker:** Selects the center marker type. The selections are: Type 1, Type 2, or Type 3.
- **Ruler:** This pattern presents physical ruler on the top and left sides. You can press the  Menu (5-way) button for longer than 3 seconds to switch the measurements between metric and imperial.
- **Customization:** You can decide the frame size by moving the  Menu (5-way) button up/down/left/right. You can press the  Menu (5-way) button for longer than 3 seconds to switch the measurements between millimeter and inch.

7. Eye Care

Protect your eyes with ASUS EYE CARE Monitors.

The latest ASUS monitors feature exclusive Blue Light Filter and Flicker free technologies to keep your eye healthy.

Refer to https://www.asus.com/Microsite/display/eye_care_technology/



- **Blue Light Filter:** Adjusts the blue light filter level.
 - » Level 0: No change.
 - » Level 1~4: The higher the level, the less blue light is scattered. When Blue Light Filter is activated, the default settings of Standard Mode will be automatically imported. Between Level 1 to Level 3, the Brightness function is user-configurable. Level 4 is optimized setting. It is compliance with TUV Low Blue Light Certification. The Brightness function is not user-configurable.



Please refer to the following to alleviate eye strains:

- Users should take some time away from the display if working for long hours. It is advised to take short breaks (at least 5 mins) after around 1 hour of continuous working at the computer. Taking short and frequent breaks is more effective than a single longer break.
 - To minimize eye strain and dryness in your eyes, users should rest the eye periodically by focusing on objects that are far away.
 - Eye exercises can help to reduce eye strain. Repeat these exercises often. If eye strain continues please consult a physician. Eye exercises: (1) Repeating look up and down (2) Slowly roll your eyes (3) Move your eyes diagonal.
 - High energy blue light may lead to eye strain and AMD (Age-Related Macular Degeneration). Blue light Filter to reduce 70% (max.) harmful blue light to avoiding CVS (Computer Vision Syndrome).
- **Rest Reminder:** This function provides you a rest reminder according to how long you set for your working time.

- **Color Augmentation:** Adjusts the color augmentation for the red, green, blue, or yellow color.

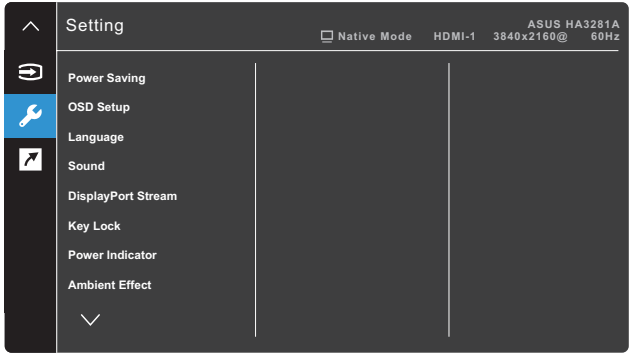
8. Input Select

In this function, you can select your desired input source.




9. Setting

Allows you to adjust the system.



- **Power Saving:** Specifies the power saving setting.
 - » Normal Level: Allows the USB downstream ports/USB Type-C ports to charge external devices when the monitor enters power saving mode.
 - » Deep Level: Does not allow all ports to charge external devices and keeps USB Type-C and USB signals from being automatically detected when the monitor enters power saving mode.
- **OSD Setup:** Configures the OSD menu settings.
 - » OSD Timeout: Adjusts the OSD timeout from 10 to 120 seconds.
 - » DDC/CI: Enables or disables the DDC/CI function.
 - » Transparency: Adjusts the OSD background from opaque to transparent.
 - » Auto Rotation: Enables or disables the automatic OSD rotation function.
- **Language:** Selects the OSD menu language.
- **Sound:** Configures the sound settings.
 - » Volume: Adjusts the output volume level.
 - » Mute: Enables or disables the mute function.
- **DisplayPort Stream:** Compatibility with graphic card.
 - » Select "DisplayPort 1.2" or "DisplayPort 1.4" by graphic card DP version.
 - » Select "DisplayPort1.4+USB3.2" when using USB Type C to A cable. The data transfer rate according to the 3.2 specification in USB Type-C port can only output the maximum resolution of 4K2K 30Hz.

- **Key Lock:** Selects “On” to disable all function keys. To cancel the Key Lock function, press the  Close button for more than five seconds.
- **Power Indicator:** Turns the power LED indicator on/off.
- **Ambient Effect:** Configures the ambient effect settings.
 - » Light Effect: Adjusts the brightness level adaptively.
 - » Adaptive Color: Adjusts the color temperature adaptively.
- **Human Sensor:** Turns on/off the Human Sensor function and adjusts its sensitivity. The effective range is from 30 to 120 cm. The default setting is Off.
 - » Low: Sensor distance is around 30 to 60 cm.
 - » Medium: Sensor distance is around 30 to 90 cm.
 - » High: Sensor distance is around 30 to 120 cm.

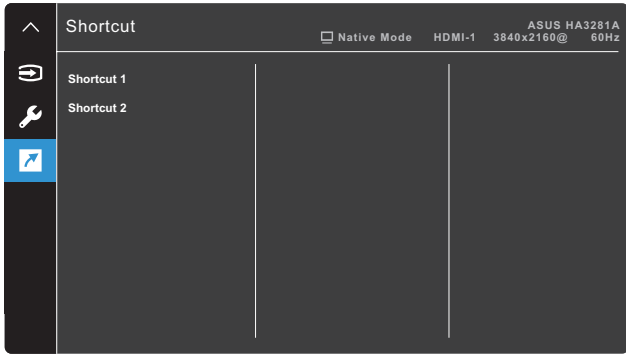


-
- The detective range may be slightly different if user wears dark or bright colored clothing. Set the sensitivity to High when wearing black or other dark clothes.
 - Please do not put any object too close to the Human Sensor to avoid any interference.
-

- **Information:** Shows the monitor information.
- **All Reset:** Selects “Yes” to revert all settings to the factory default mode.

10. Shortcut

Defines the functions for Shortcut 1 and 2 buttons.




- **Shortcut 1/Shortcut 2:** Selects a function for Shortcut 1 and 2 buttons.



When a certain function is selected or activated, your shortcut key may not support. Available function choices for shortcut: Brightness, Pixel, Input Select, PIP/PBP Setting, Color Temp., Blue Light Filter, User Mode 1, User Mode 2.

3.2 Troubleshooting (FAQ)

Problem	Possible Solution
Power LED is not ON	<ul style="list-style-type: none">• Press the  to check if the monitor is in the ON mode.• Check if the power cable is properly connected to the monitor and the power outlet.• Check if the DC switch is set to ON.
The power LED lights amber and there is no screen image	<ul style="list-style-type: none">• Check if the monitor and the computer are in the ON mode.• Make sure the signal cable is properly connected the monitor and the computer.• Inspect the signal cable and make sure none of the pins are bent.• Connect the computer with another available monitor to check if the computer is properly working..
Screen image is too light or dark	<ul style="list-style-type: none">• Adjust the Contrast and Brightness settings via OSD.
Screen image bounces or a wave pattern is present in the image	<ul style="list-style-type: none">• Make sure the signal cable is properly connected to the monitor and the computer.
Screen image has color defects (white does not look white)	<ul style="list-style-type: none">• Inspect the signal cable and make sure that none of the pins are bent.• Perform All Reset via OSD.• Adjust the Color settings or select the Color Temperature (Color Temp.) via OSD.
No sound or sound is low	<ul style="list-style-type: none">• Ensure that the HDMI/DisplayPort/Type C cable is properly connected to the monitor and the computer.• Adjust the volume settings of both your monitor and HDMI/DisplayPort/Type C device.• Ensure that the volume setting of the device is correct.

3.3 Supported operating modes

No.	Resolution	Vertical Frequency (Hz)	Horizontal Frequency (KHz)	Pixel (MHz)
1	640x480	59.94(N)	31.47(N)	25.18
2	640x480	72.82(N)	37.87(N)	31.5
3	640x480	75(N)	37.5(N)	31.5
4	720x400	70(P)	31.47(N)	28.32
5	720x480	59.94	31.469	27
6	720x576	50	31.25	27
7	800x600	56.25(P)	35.16(P)	36
8	800x600	60(P)	37.88(P)	40
9	800x600	72(P)	48.1(P)	50
10	800x600	75(P)	46.9(P)	49.5
11	1024x768	60(N)	48.36(N)	65
12	1024x768	70(N)	56.48(N)	75
13	1024x768	75(N)	60(N)	78.75
14	1280x960	60(N)	60(P)	108
15	1280x1024	60(P)	63.98(P)	108
16	1280x1024	75(P)	79.98(P)	135
17	1440x900	60(P)	55.94(N)	106.5
18	1600x1200	60(P)	75(P)	162
19	1680x1050	60(P)	65.29(N)	146.25
20	1920x1080	60(P)	67.5(P)	148.5
21	1920x1200	59.885(P)	74.556(N)	193.25
22	1920x2160	60(N)	135(P)	297
23	2048x1536	60(N)	94.769(P)	209.25
24	2560x2048	60(N)	126.4(P)	343.75
25	3280x2048	60(N)	126.4(P)	434.75
26	3840x2160	23.98	54	297
27	3840x2160	25	56.25	297
28	3840x2160	29.97	67.5	297
29	3840x2160	50	112.5	594
30	3840x2160	59.94	135	594
31	4096x2160	59.94	135	594

“P” / “N” stands for “Positive” / “Negative” polarity of incoming H-sync/V-sync (input timing). When the monitor is operating in the video mode (ie, not displaying data) using the HDMI connector, the following high definition modes shall be supported in addition to standard definition video.

Resolution	Vertical Frequency (Hz)	Horizontal Frequency (KHz)
1920x1080p	24	27
	25	28.125
	30	33.75
	50	56.25
	60	67.5
1280x720p	50	37.5
	60	45
640x480p	60	31.469

* Modes not listed in the table may not be supported. For optimal resolution, we recommend that you choose a mode listed in the table above.

Chapter 4: Specifications summary

4.1 Display

Panel Type	OLED PANEL
Panel Size	31.5" Wide Screen
Max. Resolution	8M Pixel ,3840 x 2160
Pixel Pitch	0.182 mm
Brightness	250 cd/m ² (Typ.)
Contrast Ratio	1,000,000:1 (max.)
Viewing Angle (H/V) CR>10	178° (H) / 178° (V)
Display Colors	1.07 Billion (10 bit)
Color Gamut	sRGB 100%
Response Time	0.1ms (GTG)
ASUS Preset Selection	8 color preset modes (2 user modes included)
Color Temperature Selection	6 color temperatures
Digital Input	HDMI 2.0, DisplayPort 1.4, USB Type-C
Earphone Jack	Yes (3.5mm)
USB 3.2 port	Upstream x 1, Downstream x 4 (USB 3.2 Gen 2) Type C x 1, the power output rating is 5V/3A Type A x 4, the power output rating from UP TO DOWN: <ul style="list-style-type: none">• The First of Type A*1: 5Vdc, 2A• The Second of Type A*1: 5Vdc, 0.9A• The Third of Type A*1: 5Vdc, 0.9A• The Last of Type A*1: 5Vdc, 0.9A
Color	Black/White
Power LED	White (On) / Amber (Standby)
Tilt	+23° ~ -5°
Swivel	+30° ~ -30°
Pivot	+90° ~ -90°
Height Adjustment	130mm
Kensington lock	Yes
Power consumption	Power On: 23.2 W** (Typ.) Standby: < 0.5 W Power Off: 0.3 W (Switch off)

Monitor input Rating	24 Vdc, 6.6A
Temperature (Operating)	0°C ~ 40°C
Temperature (Storage & Transportation)	-20°C ~ +60°C
Humidity (Operating)	5%~90%
Humidity (Storage & Transportation)	5%~90%
Pressure (Operating)	70K-106KPa
Pressure (Storage & Transportation)	18Kpa-101Kpa
Dimension (W x H x D)	735.4mm x 466.9mm x 54.4mm (monitor only) 735.4mm x 489.1mm x 162.6mm (with mini stand) 735.4mm x 626.9mm x 245mm (with stand, highest) 735.4mm x 496.9mm x 245mm (with stand, lowest) 878mm x 616mm x 298mm (package)
Weight (Esti.)	7.4 kg (Monitor Only)
Multi-languages	27 Languages (English, Simplified Chinese, Traditional Chinese, Japanese, Russian, Spanish, Italian, German, French, Dutch, Portuguese, Czech, Croatia, Romania, Turkish, Arabic, Danish, Finnish, Greek, Hungarian, Slovak, Slovenian, Swedish, Polish, Korean, Persian, Ukraine)
Accessories	Quick start guide, Power cord, HDMI cable, USB Type-C cable, DisplayPort cable, USB Type-C to Type-A cable, Stand, Cable clips, Power adapter, Warranty card
Standards	Energy Star 8.0, CEC, ErP, cTUVus, CB(IEC 62368-1 : 2018), CE, BSMI, CCC, FCC (Class B), ICES-001 Class B, ICES-003 Class B, RCM, VCCI, RoHS, WEEE, J-MOSS, Windows 10&11 WHQL

*Specifications are subject to change without notice.

**Measuring a screen brightness of 200 nits without audio/USB/Card reader connection.

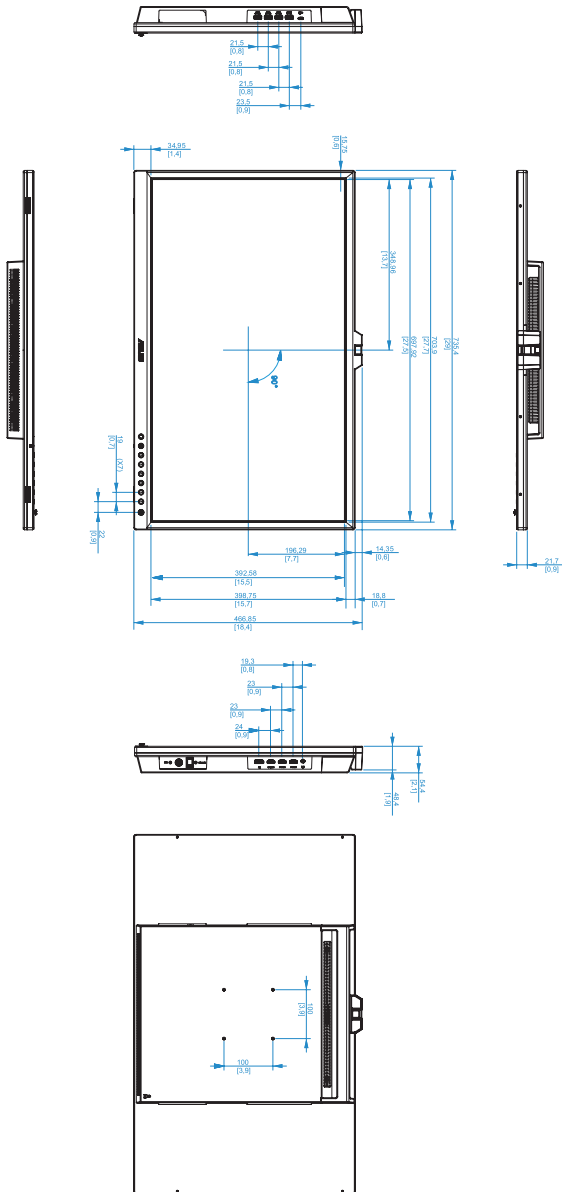
***Requires Mac OS 11.6.x.

4.2 Power

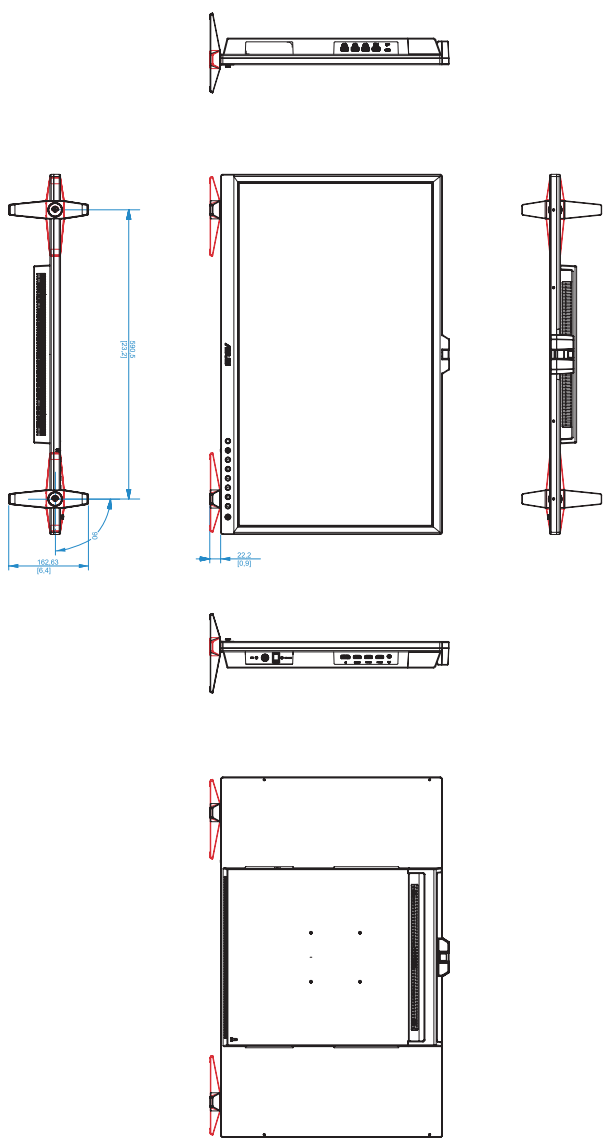
Power Adapter Vendor	Adapter Technology Co., Ltd.
Power Adapter Model Number	ATM160T-P240
Power Adapter Input	I/P: 100-240V~, 50-60Hz, 1.8-0.9A; O/P: 24Vdc, 6.6A

Chapter 5: Dimension

[Monitor]



[Monitor with mini stands]



[Monitor with stand]

